

# Innovators of the Nylacron™ Wheels

- Available in any size & load capacity
- Made in the USA by Acorn™

Nylacron™

**ACORN**®





# **Nylacron™ Wheels For Every Application**

**MADE IN THE USA**

## **APPLICATIONS**

- Aerospace
- Fisheries
- AGV
- Food
- Amusement Rides
- Meat Processing
- Automotive
- Monorail Conveyors
- Bakeries
- Pharmaceutical
- Chemical Plants
- Retrieval Systems
- Conveyor
- Storage Racks
- Crane
- Towlines
- Dairy
- Turning Platforms

**1/3 the weight of steel &  
the same load capacity**

---

**Available in flanged,  
v-groove & custom designs**

## NYLACRON™ WHEELS NY/MD AND NY/HSB

### Capacity

Up to 26,400 lbs.



## APPLICATIONS

- Aerospace
- Fisheries
- AGV
- Food
- Amusement Rides
- Meat Processing
- Automotive
- Monorail Conveyors
- Bakeries
- Pharmaceutical
- Chemical Plants
- Retrieval Systems
- Conveyor
- Storage Racks
- Crane
- Towlines
- Dairy
- Turning Platforms



**Heavy Duty Nylacron™ Wheels** are made of tough, hard, highly compressed cast polyamide, MD (MoS2) filled or heat stabilized (high temp blue) to replace Steel, Phenolic, Solid Elastomer and Urethane Wheels, where very high load capacities, floor protection, low rolling resistance, impact proof, corrosive resistance and floor conditions allow. The casting process increases the load capacity compared to injection-molded nylon and has better properties in regard to tension and pressure, modulus of elasticity, thermoform stability, coefficient of friction, flow properties and absorption of humidity.

Any size and type precision tapered or ball bearing available.

## FEATURES

- ♦ **Ergonomic:** Extraordinarily easy to push - no more backaches - less power to tow.
- ♦ **Wheels:** Wheel dampens shock and vibration thus reducing noise.
- ♦ **High Impact Strength:** Resists fracture from repeated shock loads.
- ♦ **Higher Loads:** Mechanical strength supports greater weight and allows better utilization in caster rigs.
- ♦ **Higher Resilience:** Wheel returns to original shape without deforming when deflected by loads or rapidly applied stresses.
- ♦ **High Caster Ratings:** Higher wheel ratings allow better utilization of caster rig ratings.
- ♦ **Floor Protective:** Material does not damage floors and is lighter in weight than steel.
- ♦ **Longer Life:** Shows minimal wear in extended use—resists abrasion, water and many hazardous chemicals. Ideal for stainless steel rig applications.
- ♦ **Lower Maintenance:** Sealed precision bearings and wheels greatly reduce in-plant maintenance requirements. Only one type of wheel needed.
- ♦ **Hardness:** 112-120 Rockwell R.
- ♦ **Temperature Range:** - 30 to + 220 ° F Continuous - 30 to + 400 ° F Continuous NY/HT (3" to 8").
- ♦ **Chemical Resistance:** See chart for wide range of chemical resistance.



All information is based on Acorn's over 20 years of experience working with producers of cast polyamides to successfully provide Nylacron™ wheels for industries where the properties of this material offer many benefits.

Nylacron™ wheels are also available in flanged / v-groove and custom sizes to 51" diameter to meet job requirements.

Nylacron™ Wheels designed and manufactured by Acorn™ available in any size to fit any caster rig or wheel application and replace any type wheel.



## STANDARD U.S. CASTER WHEEL SIZES

Dia. (in)	Width (in)	Capacity (lbs)	Hub Length (in)	Axle Bore (in)	Wheel Part Number*
3	1-1/4	440	1-1/2	3/8	NY/MDP031206
4	1-1/4	550	1-1/2	3/8	NY/MDP041206
5	1-1/4	660	1-1/2	3/8	NY/MDP051206
6	1-1/4	770	1-1/2	3/8	NY/MDP061206
3	2	1000	2-3/16	1/2	NY/MDP032008
4	2	2000	2-3/16	1/2	NY/MDP042008
5	2	2000	2-3/16	1/2	NY/MDP052008
6	2	2000	2-3/16	1/2	NY/MDP062008
8	2	2400	2-3/16	1/2	NY/MDP082008
6	2-1/2	5000	2-3/4	1/2	NY/MDP062508
6	2-1/2	7200	3-1/4	3/4	NY/MDP062512
6	3	10,000	3-1/2	3/4	NY/MDP063012
8	2-1/2	7000	3	1/2	NY/MDP082508
8	2-1/2	7200	3-1/4	3/4	NY/MDP082512
8	3	10,000	3-1/2	3/4	NY/MDP083012
8	3	10,000	3-1/2	1	NY/MDP083016
8	4	10,000	4-1/2	1-1/4	NY/MDP084020
10	2-1/2	7200	2-3/4	1/2	NY/MDP102508
10	2-1/2	7200	3	3/4	NY/MDP102508
10	3	10,000	3-1/2	3/4	NY/MDP103012
10	4	12,000	4-1/2	1	NY/MDP104016
10	4	12,000	4-1/2	1-1/4	NY/MDP104020
12	2-1/2	8000	3	3/4	NY/MDP122512
12	3	11,000	3-1/2	3/4	NY/MDP123012
12	4	14,000	4-1/2	1	NY/MDP124016
12	4	14,000	4-1/2	1-1/4	NY/MDP124020
12	5	18,000	5-1/2	1-1/4	NY/MDP125020

\*Change NY/MD in the Wheel Part Number to NY/HSB for High Temp.

Capacities can be increased by increasing the size of the precision bearings or by providing double row precision bearings. End caps provided with each wheel to fit in rig width and size of the axle.

**Can be made to metric sizes.**

## **NYLACRON™ MC (NY/MC)**

**Capacity**

**Up to 26,400 lbs.**



## **APPLICATIONS**

- Aerospace
- Fisheries
- AGV
- Food
- Amusement Rides
- Meat Processing
- Automotive
- Monorail Conveyors
- Bakeries
- Pharmaceutical
- Chemical Plants
- Retrieval Systems
- Conveyor
- Storage Racks
- Crane
- Towlines
- Dairy
- Turning Platforms

**Nylacron™ Monocast (NY/MC) Natural Wheels** are an unfilled cast type 6 nylon developed and proven in the field for FDA application requirements. Wheels are straight sided and precision machined on CNC equipment to exact tolerances and comply with section 177.1500 of food additive regulations. Stainless steel precision ball bearings are available for every wheel. Other than the type material, loadings and other characteristics are similar to Nylacron™ MD.

**Any size and type precision tapered or ball bearing available.**

## **FEATURES**

- ♦ **Ergonomic:** Extraordinarily easy to push - no more backaches - less power to tow.
- ♦ **Quiet:** Wheel dampens shock and vibration thus reducing noise.
- ♦ **High Impact Strength:** Resists fracture from repeated shock loads.
- ♦ **Higher Loads:** Mechanical strength supports greater weight and allows better utilization in caster rigs.
- ♦ **Higher Resilience:** Wheel returns to original shape without deforming when deflected by loads or rapidly applied stresses.
- ♦ **High Caster Ratings:** Higher wheel ratings allow better utilization of caster rig ratings.
- ♦ **Floor Protective:** Material does not damage floors and is lighter in weight than steel.
- ♦ **Longer Life:** Shows minimal wear in extended use. Resists abrasion, water and many hazardous chemicals. Ideal for stainless steel rig applications.
- ♦ **Lower Maintenance:** Sealed precision bearings and wheels greatly reduce in-plant maintenance requirements. Only one type wheel needed.
- ♦ **Hardness:** 112-120 Rockwell R.
- ♦ **Temperature Range:** - 30 to + 220 ° F Continuous.
- ♦ **Chemical Resistance:** See chart for wide range of chemical resistance.



All information is based on Acorn's over 20 years of experience working with producers of cast polyamides to successfully provide Nylacron™ wheels for industries where the properties of this material offer many benefits.

Nylacron™ wheels are also available in flanged / v-groove and custom sizes to 51" diameter to meet job requirements.

Nylacron™ Wheels designed and manufactured by Acorn™ available in any size to fit any caster rig or wheel application and replace any type wheel.

Dia. (in)	Width (in)	Capacity (lbs)	Hub Length (in)	Axle Bore (in)	Wt. (lbs)	Wheel Part Number
3	1-1/4	440	1-1/2	3/8	1	NY/MCP032506
4	1-1/4	550	1-1/2	3/8	1.5	NY/MCP042506
5	1-1/4	660	1-1/2	3/8	2	NY/MCP052506
6	1-1/4	770	1-1/2	3/8	3	NY/MCP062506
3	2	1000	2-3/16	1/2	1.5	NY/MCP032008
4	2	2000	2-3/16	1/2	2	NY/MCP042008
5	2	2000	2-3/16	1/2	3	NY/MCP052008
6	2	2000	2-3/16	1/2	4	NY/MCP0620-08
8	2	2400	2-3/16	1/2	5	NY/MCP082008
6	2-1/2	5000	2-3/4	1/2	5	NY/MCP062508
6	2-1/2	7200	3-1/4	3/4	5	NY/MCP062512
6	3	10,000	3-1/2	3/4	6	NY/MCP063012
8	2-1/2	7000	3	1/2	6	NY/MCP082508
8	2-1/2	7200	3-1/4	3/4	6	NY/MCP082512
8	3	10,000	3-1/2	3/4	8	NY/MCP083012
8	3	10,000	3-1/2	1	8	NY/MCP083016
8	4	10,000	4-1/2	1-1/4	9	NY/MCP084020
10	2-1/2	7200	2-3/4	1/2	7	NY/MCP102508
10	2-1/2	7200	3	3/4	7	NY/MCP102512
10	3	10,000	3-1/2	3/4	8	NY/MCP103012
10	4	12,000	4-1/2	1	9	NY/MCP104016
10	4	12,000	4-1/2	1-1/4	9	NY/MCP104020
12	2-1/2	8000	3	3/4	8	NY/MCP122512
12	3	11,000	3-1/2	3/4	9	NY/MCP123012
12	4	14,000	4-1/2	1	10	NY/MCP124016
12	4	14,000	4-1/2	1-1/4	10	NY/MCP124020
12	5	18,000	5-1/2	1-1/4	11	NY/MCP125020

Capacities can be increased by increasing the size of the precision bearings or by providing double row precision bearings.

# Nylacron™ MD/Flanged

## NYLACRON™ MD/FLANGED NY/NL & NY/ND

### Capacity

Up to 3000 lbs.



### Nylacron™ Wheel

Available as Single Flanged  
or Double Flanged

## APPLICATIONS

- Aerospace
- Fisheries
- Amusement Rides
- Food Processing
- Automotive
- Pharmaceutical
- Bakeries
- Turning Platforms
- Dairy
- Towlines
- Meat Processing

**Heavy Duty Nylacron™ Flanged Wheels** are straight sided and designed to operate quietly on steel track. All are precision machined on CNC equipment for concentricity and ensure proper tracking. Wheels are made of tough, hard, highly compressed cast polyamide, (MoS<sub>2</sub>) filled, heat stabilized and designed to replace Steel, Phenolics, Solid Elastomers and Urethane Wheels in flanged applications, where very high load capacities, low rolling resistance, impact proof, corrosive resistance and speed conditions allow.

*Custom requirements to drawings available.*

**Any size and type precision tapered or ball bearing available.**

## FEATURES

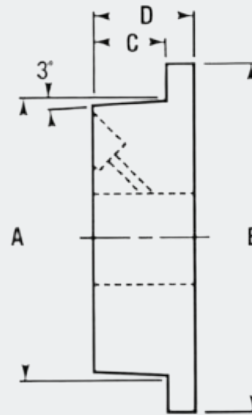
- ♦ **Ergonomic:** Extraordinarily easy to push - no more backaches - less power to tow.
- ♦ **Quiet:** Wheel dampens shock and vibration thus reducing noise.
- ♦ **High Impact Strength:** Resists fracture from repeated shock loads.
- ♦ **Higher Loads:** Mechanical strength supports greater weight and allows better utilization in caster rigs.
- ♦ **Higher Resilience:** Wheel returns to original shape without deforming when deflected by loads or rapidly applied stresses.
- ♦ **High Caster Ratings:** Higher wheel ratings allow better utilization of caster rig ratings.
- ♦ **Floor Protective:** Material does not damage floors and is lighter in weight than steel.
- ♦ **Longer Life:** Shows minimal wear in extended use. Resists abrasion, water and many hazardous chemicals. Ideal for stainless steel rig applications.
- ♦ **Lower Maintenance:** Sealed precision bearings and wheels greatly reduce in-plant maintenance requirements. Only one type wheel needed.
- ♦ **Hardness:** 112-120 Rockwell R.
- ♦ **Temperature Range:** - 30 to + 220 ° F Continuous.
- ♦ **Chemical Resistance:** See chart for wide range of chemical resistance.



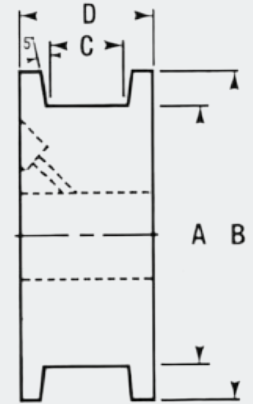
All information is based on Acorn's over 20 years of experience working with producers of cast polyamides to successfully provide Nylacron™ wheels for industries where the properties of this material offer many benefits.

**Nylacron™ Wheels** design and manufactured by Acorn™ available in any size to fit any caster rig or wheel application and replace any type wheel.

SINGLE FLANGED ( NL )



DOUBLE FLANGED ( DL )



STANDARD FLAT  
3 DEG SLOPE OPTIONAL

Face Dia. A	Flange OD B	Flange Width C	OAW Width D	Hub Length (in.)	Material Type	Load Capacity (lbs)	Axle Size (in.)	Approx Weight (lbs)	Part Number (P) Prec Ball Brg (T) Tapered Brg
5"	6"	1-3/4"	2"	2-3/16"	Nylacron™	1300	1/2	3	NY/NLP052012
5"	6"	1-3/4"	2"	2-3/16"	Nylacron™	1300	1/2	3	NY/NLT052008
5"	6"	1"	1-1/2"	2-3/16"	Nylacron™	1100	1/2	3	NY/DLP051512
5"	6"	1"	1-1/2"	2-3/16"	Nylacron™	1100	1/2	3	NY/DLT051508
6"	6-3/4"	1-3/4"	2"	2-3/16"	Nylacron™	1600	1/2	4	NY/NLP062012
6"	6-3/4"	1-3/4"	2"	2-3/16"	Nylacron™	1600	1/2	4	NY/NLT062008
8"	9-1/2"	2"	2-1/2"	2-3/4"	Nylacron™	2500	3/4	7	NY/NLP082516
8"	9-1/2"	2"	2-1/2"	2-3/4"	Nylacron™	2500	3/4	7	NY/NLT082512
10"	12"	2-5/8"	3"	3-1/4"	Nylacron™	3000	3/4	8	NY/NLP103016
10"	12"	2-5/8"	3"	3-1/4"	Nylacron™	3000	3/4	8	NY/NLT103012
10"	12"	2-1/4"	3"	3-1/4"	Nylacron™	2000	3/4	8	NY/DLP103016
10"	12"	2-1/4"	3"	3-1/4"	Nylacron™	2000	3/4	8	NY/DLT105012

Capacities can be increased by increasing the size of the precision bearings or by providing double row precision bearings.

**Nylacron™ Wheels can be made to any steel or cast iron size.**



# Nylacron™ Monocast/V-Groove

## NYLACRON™ MONOCAST/V-GROOVE NY/MC/VG

Capacity

Up to 26,000 lbs.



### Nylacron™ Wheel

Available in black MD

**Nylacron™ Monocast (NY/MC/VG) V-Groove Wheels** are straight sided and designed to operate quietly on steel track. All are precision machined on CNC equipment for concentricity and ensure proper tracking. Wheels are made of tough hard, highly compressed cast polyamide, (MoS2) filled, heat stabilized and designed to replace Steel, Phenolics, Solid Elastomers and Urethane Wheels in V-groove applications where very high load capacities, low rolling resistance, impact proof, corrosive resistance and speed conditions allow.

*Custom requirements to drawings available.*

**Any size and type precision tapered or ball bearing available.**

## FEATURES

- ♦ **Ergonomic:** Extraordinarily easy to push - no more backaches - less power to tow.
- ♦ **Quiet:** Wheel dampens shock and vibration thus reducing noise.
- ♦ **High Impact Strength:** Resists fracture from repeated shock loads.
- ♦ **Higher Loads:** Mechanical strength supports greater weight and allows better utilization in caster rigs.
- ♦ **Higher Resilience:** Wheel returns to original shape without deforming when deflected by loads or rapidly applied stresses.
- ♦ **High Caster Ratings:** Higher wheel ratings allow better utilization of caster rig ratings.
- ♦ **Floor Protective:** Material does not damage floors and is lighter in weight than steel.
- ♦ **Longer Life:** Shows minimal wear in extended use. Resists abrasion, water and many hazardous chemicals. Ideal for stainless steel rig applications.
- ♦ **Lower Maintenance:** Sealed precision bearings and wheels greatly reduce in-plant maintenance requirements. Only one type wheel needed.
- ♦ **Hardness:** 112-120 Rockwell R.
- ♦ **Temperature Range:** - 30 to + 220 ° F Continuous.
- ♦ **Chemical Resistance:** See chart for wide range of chemical resistance.

## APPLICATIONS

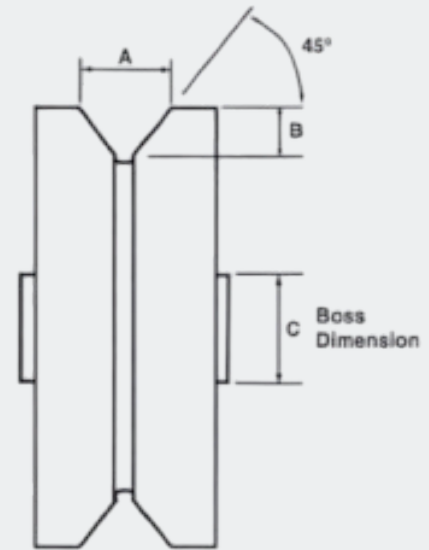
- Aerospace
- Fisheries
- Amusement Rides
- Food Processing
- Automotive
- Pharmaceutical
- Bakeries
- Turning Platforms
- Dairy
- Towlines
- Meat Processing



All information is based on Acorn's over 20 years of experience working with producers of cast polyamides to successfully provide Nylacron™ wheels for industries where the properties of this material offer many benefits.

Capacities can be increased by increasing the size of the precision bearings or by providing double row precision bearings.

**Nylacron™ Wheels** design and manufactured by Acorn™ available in any size to fit any caster rig or wheel application and replace any type wheel.



NYLACRON WHEELS CAN BE MADE TO ANY STEEL OR CAST IRON STANDARD SEE FLANGED STEEL WHEEL SECTION FOR DIMENSIONS

Wheel Dia. A	Width B	V-Groove Width WV	V-Groove Depth DV	Hub Length (in.)	Material Type	Load Capacity (lbs)	Axle Size (in.)	Approx Weight (lbs)	Part Number (P) Precision Ball Bearings
4"	2"	7/8"	7/16"	2-7/16	(NV) Nylacron™	1000	1/2	2	NY/MC/VGP042012
5"	2"	7/8"	7/16"	2-7/16	(NV) Nylacron™	1300	1/2	3	NY/MC/VGP052012
6"	2"	7/8"	7/16"	2-7/16	(NV) Nylacron™	1500	1/2	4	NY/MC/VGP062012
8"	2"	7/8"	7/16"	2-7/16	(NV) Nylacron™	2000	1/2	6	NY/MC/VGP082012
8"	2-1/2"	7/8"	7/16"	2-3/4"	(NV) Nylacron™	2100	3/4	7	NY/MC/VGP082516
8"	2-1/2"	7/8"	7/16"	2-3/4"	(NV) Nylacron™	2100	3/4	7	NY/MC/VGP082516
10"	2-1/2"	7/8"	7/16"	2-3/4"	(NV) Nylacron™	2400	3/4	9	NY/MC/VGP102516
10"	2-1/2"	7/8"	7/16"	2-3/4"	(NV) Nylacron™	2400	3/4	9	NY/MC/VGP102512
8"	3"	1-3/8"	11/16"	3-1/2"	(NV) Nylacron™	2200	3/4	9	NY/MC/VGP083016
8"	3"	1-3/8"	11/16"	3-1/2"	(NV) Nylacron™	2200	3/4	9	NY/MC/VGP083016
10"	3"	1-3/8"	11/16"	3-1/2"	(NV) Nylacron™	2600	3/4	11	NY/MC/VGP103016
10"	3"	1-3/8"	11/16"	3-1/2"	(NV) Nylacron™	2600	3/4	11	NY/MC/VGP103012

Capacities can be increased by increasing the size of the precision bearings or by providing double row precision bearings.

**Nylacron™ Wheels can be made to any steel or cast iron size.**



# White Nylacron™ Wheels

## EURO (MM) DIMENSIONS

Item Number	Dia. (mm)	Wheel Width (mm)	Hub Length (mm)	Hub Dia. (mm)	Bore Hole (mm)	Load Capacity (kg)
NYMC/040/033/1/10	40	33	35	17	10	80
NYMC/045/019/1/10	45	19	22	16	10	70
NYMC/050/017/1/10-1	50	17	20	26	10	150
NYMC/050/017/1/10-2	50	17	19	20	10	140
NYMC/050/019/1/06	50	19	27	13	06	100
NYMC/050/025/1/10	50	25	30	18	10	150
NYMC/060/020/1/10	60	20	25	20	10	150
NYMC/065/030/1/10	65	30	35	20	10	170
NYMC/070/030/1/10	70	30	40	25	10	200
NYMC/075/023/1/15	75	23	25	30	15	200
NYMC/080/035/1/15	80	35	37	30	15	300
NYMC/080/035/1/20	80	35	35	50	20	300
NYMC/100/030/1/10	100	30	40	35	10	300
NYMC/100/040/1/15	100	40	50	48	15	450
NYMC/100/050/1/15	100	50	60	55	15	600
NYMC/125/040/1/15	125	40	53	60	15	600
NYMC/125/050/1/15	125	50	60	56	15	700
NYMC/125/050/1/20	125	50	60	56	20	700
NYMC/150/040/1/15	150	40	50	35	15	450
NYMC/150/040/1/20	150	40	53	65	20	700
NYMC/150/050/1/20-1	150	50	55	65	20	600
NYMC/150/050/1/20-2	150	50	60	62	20	800
NYMC/160/050/1/20	160	50	60	63	20	850
NYMC/175/040/1/20	175	40	57	65	20	800
NYMC/175/050/1/20	175	50	55	65	20	750
NYMC/200/040/1/15	200	40	50	45	15	750
NYMC/200/040/1/20	200	40	58	65	20	1,000
NYMC/200/050/1/20-1	200	50	55	65	20	1,000
NYMC/200/050/1/20-2	200	50	60	65	20	1,200
NYMC/200/050/1/25	200	50	60	65	25	1,200
NYMC/250/050/1/20	250	50	60	65	20	1,500
NYMC/250/050/1/25	250	50	60	65	25	1,500
NYMC/250/060/1/25	250	60	65	90	25	1,500
NYMC/300/060/1/30	300	60	70	92	30	2,000

**Nylacron™ Wheels with plain bearing.** High-quality thermoplastic polyamide. Wheels in heavy-duty design with maintenance-free plain bearing.

All wheels can be adapted to fit in U.S. caster rigs.

25.4 mm = 1 inch 1 kg = 2.2 lbs

# White Nylacron™ Wheels

## EURO (MM) DIMENSIONS



Item Number	Dia. (mm)	Wheel Width (mm)	Hub Length (mm)	Fixing Length (mm)	Hub Dia. (mm)	Bore Hole (mm)	Load Capacity (kg)
NYMC/080/035/5/15	80	35	35	33	50	12	300
NYMC/100/040/5/12	100	40	50	43	48	12	450
NYMC/100/040/5/17	100	40	50	50	48	17	450
NYMC/100/050/5/20	100	50	60	09	55	20	600
NYMC/120/050/5/20	120	50	58	56	58	20	600
NYMC/125/040/5/20	125	40	53	53	60	20	600
NYMC/125/050/5/20	125	50	60	62	70	20	700
NYMC/150/040/5/20	150	40	53	51	65	20	700
NYMC/150/050/5/12	150	50	55	09	65	15	600
NYMC/150/050/5/20-1	150	50	55	53	65	20	600
NYMC/150/050/5/20-2	150	50	60	62	76	20	800
NYMC/160/040/5/20	160	40	60	58	60	20	600
NYMC/175/050/5/20	175	50	55	53	65	20	800
NYMC/200/050/5/12	200	50	55	60	65	15	1,000
NYMC/200/050/5/20	200	50	60	09	85	20	1,200
NYMC/200/065/5/25	200	65	74	72	80	25	1,300
NYMC/250/050/5/25	250	50	60	60	92	25	1,500
NYMC/250/060/5/25	250	60	65	63	90	25	1,500
NYMC/300/060/5/25	300	60	70	68	93	25	2,000

Custom Sizes Available

25.4 mm = 1 inch 1 kg = 2.2 lbs

**Nylacron™ Wheels with ball bearing.** High-quality thermoplastic polyamide. Wheels in heavy-duty design with ball bearing.

*All wheels can be adapted to fit in U.S. caster rigs.*



**NY/MC/5 SERIES**



# Acorn™/Nylacron™ Ergonomic Test Results

FORCE/STRAIN MEASUREMENTS FOR 9C BASE ROLL CARTS				
Pushing Force Required (Kg)	Wheel Type			
Forces measured using Chatillon DPPH-50 Force Gage	Current (Black Albion)	Black Nylacron™	Swivel EAZ Dual Wheel - grey	Swivel EAZ Dual Wheel - black
Static Force	11-13	9-12	14-15	15-16
Force required to keep cart moving, once in motion	4-5	2-4	5-6	8-10

Pushing Force Required (Kg)	Wheel Type			
Forces measured using Chatillon DPPH-50 Force Gage	Current (Black Albion)	Black Nylacron™	Swivel EAZ Dual Wheel - grey	Swivel EAZ Dual Wheel - black
Static Force	14-16	9-12	15	25
Force required to keep cart moving, once in motion	3-4	2-4	5-6	10
Turning Force	20	20	19-20	25

**NYLACRON™ ERGONOMIC TEST RESULTS FROM AN INDEPENDENT FORTUNE 500 CUSTOMER TEST.**



The following chemicals are considered compatible with Nylacron™ wheels. This is a general guide only, since there are many other chemicals compatible with these wheels. Field testing is recommended to confirm these recommendations.



- |                              |                             |                             |                           |
|------------------------------|-----------------------------|-----------------------------|---------------------------|
| • Acetic acid                | • Copper sulphate solutions | • Linseed oil               | • Toluol                  |
| • Acetone                    | • Diesel oil                | • Lubricating oils          | • Trichloroethylene       |
| • Amyl acetate               | • Edible oils               | • Lye                       | • Turpentine              |
| • Ammonia                    | • Esters                    | • Mercury                   | • Urea                    |
| • Ammonia chloride           | • Ethanol                   | • Methyl chloride           | • Vaseline                |
| • Ammonia sulfate            | • Ethyl alcohol             | • Methyl ethyl ketone       | • Vegetable oils          |
| • Beer                       | • Ether                     | • Milk                      | • Vinyl chloride          |
| • Benzene                    | • Fish glue                 | • Mineral oil               | • Water                   |
| • Boric acid                 | • Freon                     | • Motor oil                 | • Wax molten              |
| • Butyric acid               | • Gasoline                  | • Olive oil                 | • White spirit            |
| • Butane                     | • Glycerine                 | • Petrol                    | • Wines & spirits         |
| • Calcium chloride solutions | • Glycol                    | • Petroleum                 | • Xylene                  |
| • Carbon dioxide             | • Hexane                    | • Sea water                 | • Zinc chloride solutions |
| • Carbon disulphide          | • Hydrogen sulfide          | • Silicone oil/grease       |                           |
| • Carbon monoxide            | • Hydrochloric acid         | • Sodium chloride solutions |                           |
| • Carbon tetrachloride       | • Isopropyl alcohol         | • Soy Bean oil              |                           |
| • Citric acid solutions      | • Jet fuels                 | • Tolulene                  |                           |

**Call Acorn™ (Toll Free)** for any specific Chemical Resistance Data



**Acorn Industrial Products Co**

800.523.5474 | [acorn@acornindprod.com](mailto:acorn@acornindprod.com)

---

[acornindustrialproducts.com](http://acornindustrialproducts.com)