

# SECTION III

## LEVEL - RITE® MOUNTS

Level-Rite® Leveling Mounts .....	26-27
Level-Rite® Installation Procedures .....	28-29
Level-Rite® Machinery Mounts for Bridgeport™ Machines .....	30
Hollow Base Mounting Kits .....	31
Tri-Wedge 8000 Mounts .....	32-33
Machinery Mount Application Guide .....	34-37
Machinery Installation Systems .....	37-A
Machinery Installation Procedures - U Mounts .....	37-B

MODEL	MAX LOAD	A	B	C	D	E
LR200	200	2 1/8"	3 1/2"	3 1/2"	3 1/2"	3 1/2"
LR300	300	2 1/8"	3 1/2"	3 1/2"	3 1/2"	3 1/2"
LR400	400	2 1/8"	3 1/2"	3 1/2"	3 1/2"	3 1/2"
LR500	500	2 1/8"	3 1/2"	3 1/2"	3 1/2"	3 1/2"
LR600	600	2 1/8"	3 1/2"	3 1/2"	3 1/2"	3 1/2"
LR700	700	2 1/8"	3 1/2"	3 1/2"	3 1/2"	3 1/2"
LR800	800	2 1/8"	3 1/2"	3 1/2"	3 1/2"	3 1/2"
LR900	900	2 1/8"	3 1/2"	3 1/2"	3 1/2"	3 1/2"
LR1000	1000	2 1/8"	3 1/2"	3 1/2"	3 1/2"	3 1/2"
LR1200	1200	2 1/8"	3 1/2"	3 1/2"	3 1/2"	3 1/2"



### LR-200 AND LR-500 SERIES

The LR-200 and LR-500 SERIES are designed for lighter equipment applications. The LR-200 is for loadings up to 250 pounds per mount and the LR-500 is designed for loadings up to 500 pounds. Both LR models have solid steel bases and built-in leveling screws.

### LR-750 THRU LR-1200 SERIES

The LR thru LR-1200 are of extra heavy-duty construction in a compact design intended for general purpose use. They also work well with machines that generate high impact loads and unusually high horizontal loads. Machine loads are borne by the tough cast iron mount housings. For more extreme lateral load cases, the standard 1" thick isolation pad bonded with a high coefficient of friction surface is used to prevent "walking". All LR Series mounts can compensate for pitched floors.

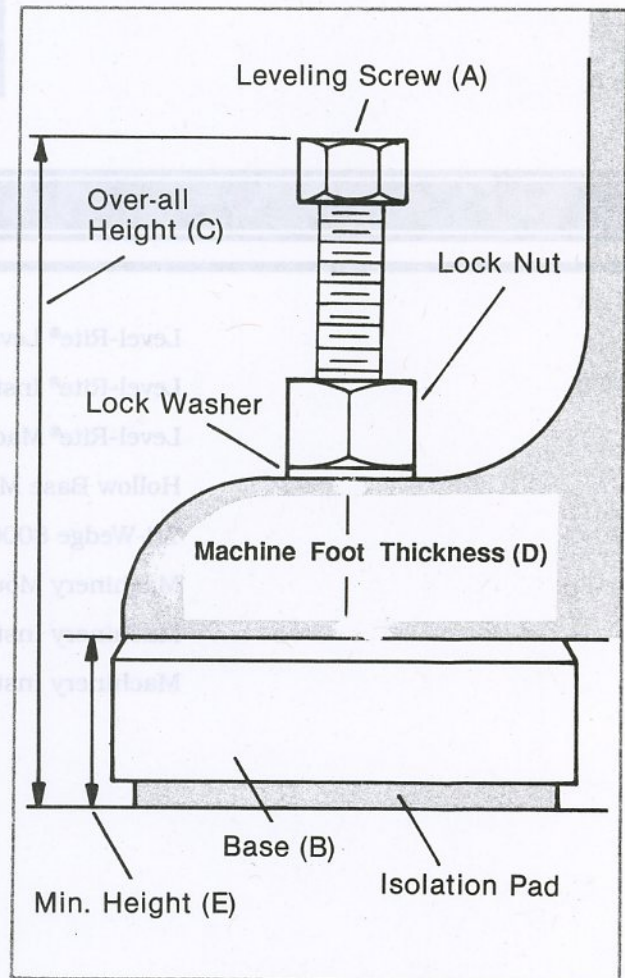
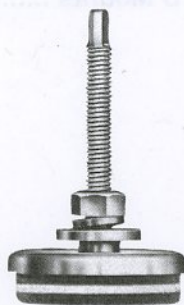
# LEVEL-RITE® LEVELING MOUNTS

## EXTRA RUGGED DESIGN SIMPLIFIES LEVELING DAMPENS VIBRATION AND NOISE

LEVEL-RITE® MOUNTS are self-contained leveling mounts with RED-LINE™ ANCHOR PADS. They combine vibration and noise control with reliable leveling which eliminates the need for lagging or adhesives. LEVEL-RITE® MOUNTS conform to OSHA requirements.

### HOW TO SPECIFY LEVEL-RITE® MOUNTS

Mount loadings are expressed in pounds shown in the chart below. To determine the approximate load applied by a particular machine, divide the total weight by the number of mounting points. Note that in certain cases, where weight distribution may load one or more mounts significantly more than others, special consideration is required. When machinery generating high impact is being mounted, reduce the mount rating by 25% to assure maximum performance.



### LR-200 AND LR-500 SERIES

The LR-200 and LR-500 SERIES are designed for lighter equipment applications. The LR-200 is for loadings up to 250 pounds per mount and the LR-500 is designed for loadings up to 500 pounds. Both LR models have solid steel bases and built-in leveling screws.

### LR-750 THRU LR-12000 SERIES

The LR thru LR-12000 are of extra heavy-duty construction in a compact design intended for general purpose use. They also work well with machines that generate high impact loads and unusually high horizontal loads. Machine loads are borne by the tough cast iron mount housings. For more extreme lateral load cases, the standard 1" thick isolation pad bonded with a high coefficient-of-friction surface is used to prevent "walking". All LR Series mounts can compensate for pitched floors.

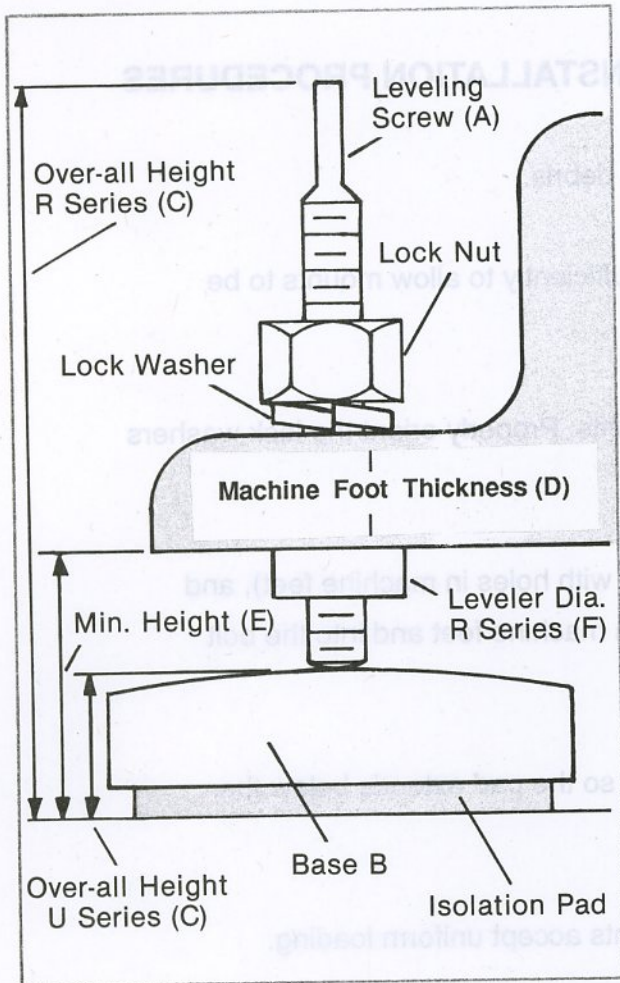
#### SPECIFICATIONS

MODEL	MAX LOAD	A	B	C	D*	E
LR200	250	5/16-18	2 7/8 Dia.	3 1/2	2 1/2	9/16
LR500	500	3/8-16	3 1/2 Dia.	4 1/2	2 3/4	5/8
LR750	750	1/2-13	3 1/2x5 1/2	7	2 7/8	1 3/4
LR1200	1,200	5/8-11	3 1/2x5 1/2	7	2 7/8	1 3/4
LR2000	2,000	5/8-11	3 1/2x5 1/2	7	2 7/8	1 3/4
LR3000	3,000	3/4-10	5x8	8 1/2	2 7/8	2
LR5000	5,000	3/4-10	5x8	8 1/2	2 7/8	2
LR7500	7,500	1-8	5x8	8 1/2	2 7/8	2
LR12000	12,000	1-8	5x8	8 1/2	2 7/8	2

\*LR Series has 1/2" adjustment for leveling machine.

Special length leveling screws available for non-standard applications.

# LEVEL-RITE® LEVELING MOUNTS



## SPECIFICATIONS

MODEL	MAX LOAD	A	B	C	D	E	F
R5	500	1/2-13	3x3	7	2 3/4	1 3/4	1 3/4
R9	900	1/2-13	3x3	7	2 3/4	1 3/4	1 3/4
R16	1,600	5/8-11	4x4	7	2 3/4	1 3/4	1 3/4
R27	2,700	1/2-13	3x3	7	2 3/4	1 3/4	1 3/4
R36	3,600	1-8	6x6	7 1/2	2 3/4	2 5/8	2 1/4
R48	4,800	5/8-11	4x4	7	2 3/4	1 3/4	1 3/4
R100	10,800	1-8	6x6	7 1/2	2 3/4	2 5/8	2 1/4
U5	500	—	3x3	1	—	—	—
U9	900	—	3x3	1	—	—	—
U16	1,600	—	4x4	1	—	—	—
U27	2,700	—	3x3	1	—	—	—
U36	3,600	—	6x6	1 1/2	—	—	—
U48	4,800	—	4x4	1	—	—	—
U100	10,800	—	6x6	1 1/2	—	—	—



## RED-LINE™ ANCHOR PADS USED ON LEVEL-RITE® MOUNTS

Engineered felt is used to reduce vibration transmission and noise. The nylon/acrylic bonding on the pad provides an extremely high coefficient-of-friction between the pad and the floor surface to provide maximum protection against machine movement without physical anchoring. Pads are unaffected by oils and solutions used in manufacturing plants.

## R SERIES

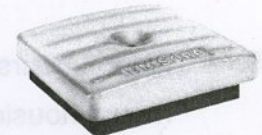
## FOR ALL TYPES OF MACHINERY



The UNISORB® R SERIES is a self-contained leveling mount with a 1/2" thick pad for all types of machinery. Rugged cast iron and anodized steel construction with a free-floating leveling screw offer vertical adjustments of up to 2". They will also compensate for pitched or uneven floors.

## U SERIES

## FOR PRECISION EQUIPMENT



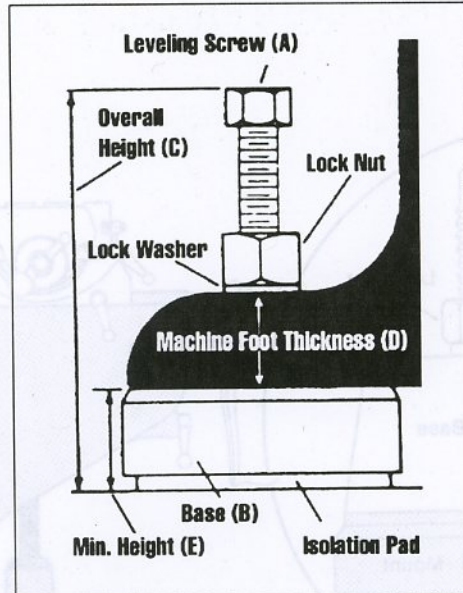
The U SERIES self-contained mounts with RED-LINE™ ANCHOR PADS are designed to accept machinery leveling screws and are supplied without leveling accessories. Their rugged heavy-duty construction is designed for precision and finishing equipment.

# LEVEL-RITE® INSTALLATION PROCEDURES

## LEVEL-RITE MACHINERY MOUNTS INSTALLATION PROCEDURES

1. Clean floor removing all oil, grease and debris.
2. Bring machine into location and raise sufficiently to allow mounts to be positioned under the mounting feet.
3. Remove the leveling bolts from the mounts. Properly orient the lock washers and hex nuts on the bolts.
4. Position mounts (with bolt holes aligned with holes in machine feet), and insert leveling bolts through bolt holes in machine feet and into the bolt holes in the mounts.
5. Adjust each mount with the leveling bolt so the pad extends below the mount housing approximately 1/4".
6. Lower machine onto mounts so all mounts accept uniform loading.
7. After 20 minutes locate the mount housing closest to the floor and elevate it 1/8" to 1/4" off the floor. Level the machine by adjusting the other mounts using the first mount as the point of reference. Maximum amount of pad showing below housing should not exceed 5/8".
8. Tighten nuts and lock washers, thus securing machine feet to mounts.
9. After 2 hours and 24 hours of operation recheck the lowest mount to insure mount housing is not in contact with the floor.

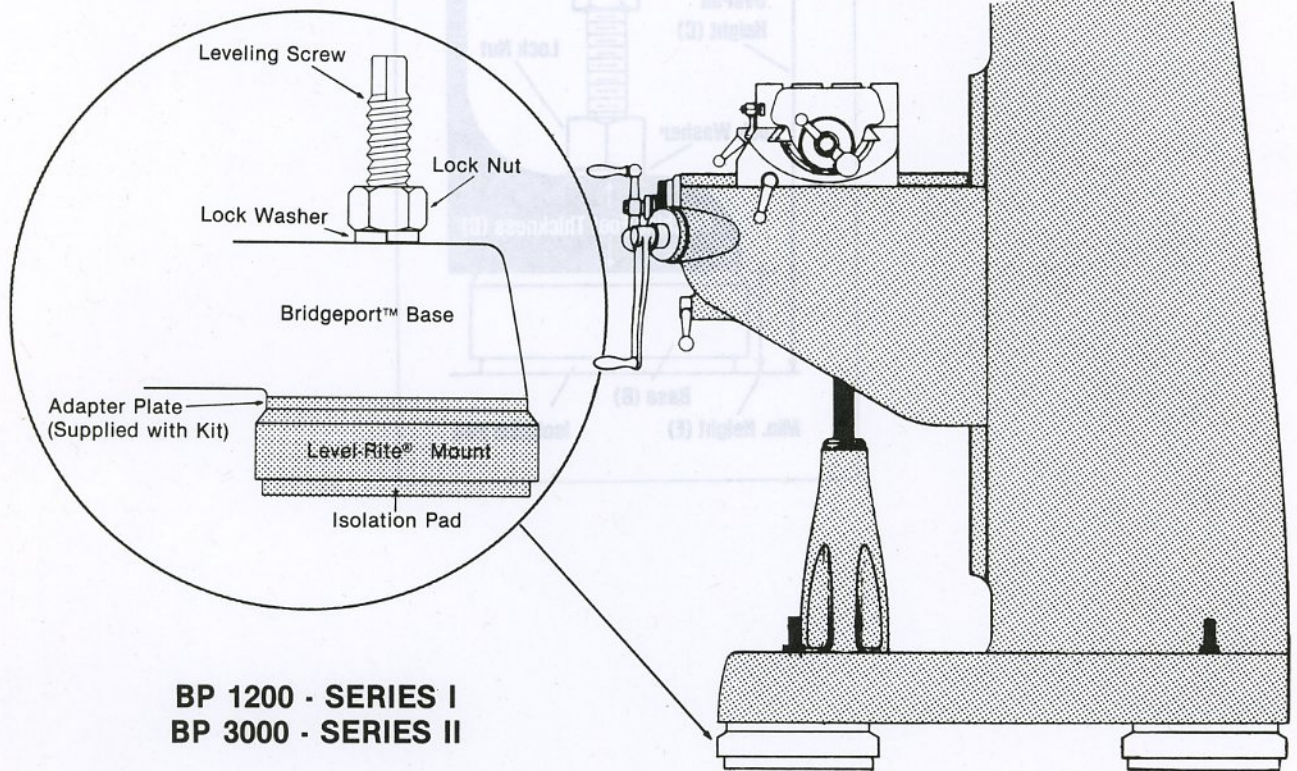
# LEVEL-RITE® INSTALLATION PROCEDURES



MODEL	MAX LOAD	A	B	C	D*	E
LR200	250	5/16 - 18	2 1/8 Dia.	3 1/2	2 1/2	9/16
LR500	500	3/8 - 16	3 1/2 Dia.	4 1/2	2 3/4	5/8
LR750	750	1/2 - 13	3 1/2 x 5 1/2	7	2 7/8	1 3/4
LR1200	1200	5/8 - 11	3 1/2 x 5 1/2	7	2 7/8	1 3/4
LR2000	2000	5/8 - 11	3 1/2 x 5 1/2	7	2 7/8	1 3/4
LR3000	3000	3/4 - 10	5 x 8	8 1/2	2 7/8	2
LR5000	5000	3/4 - 10	5 x 8	8 1/2	2 7/8	2
LR7500	7500	1 - 8	5 x 8	8 1/2	2 7/8	2
LR12000	12,000	1 - 8	5 x 8	8 1/2	2 7/8	2

\*LR Series has 1/2" adjustment for leveling machine.

# LEVEL-RITE® MACHINERY MOUNTS - FOR BRIDGEPORT™ MACHINES



## EXTRA-RUGGED DESIGN. SIMPLIFIES LEVELING. DAMPENS VIBRATION, NOISE.

UNISORB BP-1200-Series I and BP-3000-Series II Level-Rite® Mounts are a ruggedly built design combining broad, sturdy construction with improved vibration control. Designed for use with Bridgeport machines, the BP-1200 and BP-3000 are quick and easy to install and require no special modifications or attachments to the Bridgeport base. These self-contained leveling mounts simplify machine installation and eliminate floor damage. No drilling, lagging, adhesives or shims are required.

Accurate leveling is obtained by simply turning the leveling screw. Free-floating action of the leveling screw automatically compensates for uneven or pitched floors. Once adjusted, the lock washer and nut hold the adjustment secure. Furnished complete with UNISORB Red-Line™ Anchor Pads, BP-1200 and BP-3000 Level-Rite® Mounts absorb vibration, reduce noise, and prevent machines from creeping or walking. Properly installed, Level-Rite® Mounts meet OSHA standards for anchoring machinery.

### UNEQUALLED VIBRATION DAMPING QUALITIES OF ENGINEERED FELT

For thousands of years man has used felted fiber to absorb shock and vibration. Even with advances in technology in polymer and elastomer chemistry, no other substance to this day equals felt in its ability to isolate against transmitted shock and vibration. UNISORB RED-LINE™ PADS are also highly resistant or impervious to most industrial chemicals, oils and moisture. Life expectancy, in most cases, will exceed that of the machinery with which they are installed.

### RED-LINE™ ANCHOR PADS USED ON LEVEL-RITE® MOUNTS

Engineered felt is used to reduce vibration transmission and noise. The nylon/acrylic bonding on the pad provides an extremely high coefficient-of-friction between the pad and the floor surface to provide maximum protection against machine movement without physical anchoring. Pads are unaffected by oils and solutions used in manufacturing plants.

# HOLLOW BASE MOUNTING KITS

## HOLLOW BASE MOUNTING KITS

Designed for hollow bases as found on the Bridgeport Machines and certain models of lathes , grinders ,etc.

The kit provides vibration control , leveling and support. Each kit includes (4) mounts with special length level adjusting screw and (2) mounting plates.

Specify distance between bolt holes when ordering. Standard kits accomodate these distances :

BP - 1200 KIT	20" - 21.5" ( SLOTTED )
BP - 3000 KIT	23" - 24.5" ( SLOTTED )
BP - 3000S KIT	26" - 27.5" ( SLOTTED )

OTHER SPACINGS AVAILABLE.

### BP-1200 KIT FOR SERIES I BRIDGEPORT MACHINE

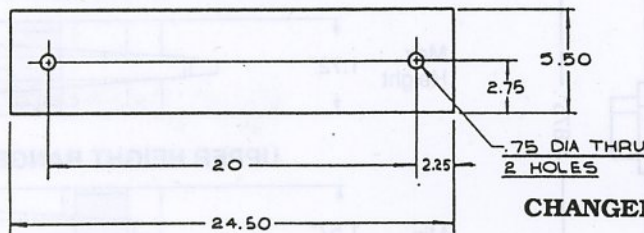
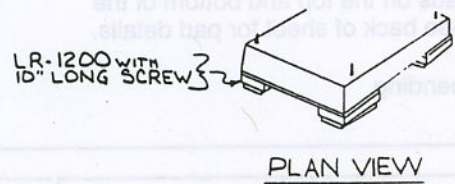
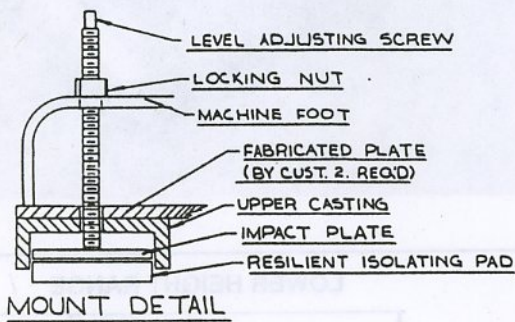


PLATE DETAIL

# TRI-WEDGE 8000 MOUNTS

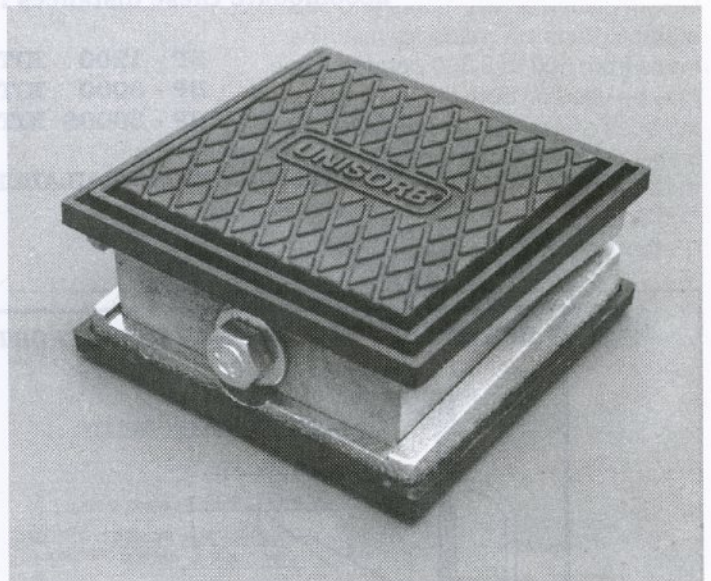
## Tri-Wedge 8000 Mounts\* Load Indicating Machinery Mount Pads\*

- Heavy Duty Machinery Mount System
- Two Height Ranges in One Mount
- Load Indicator Mount Pads

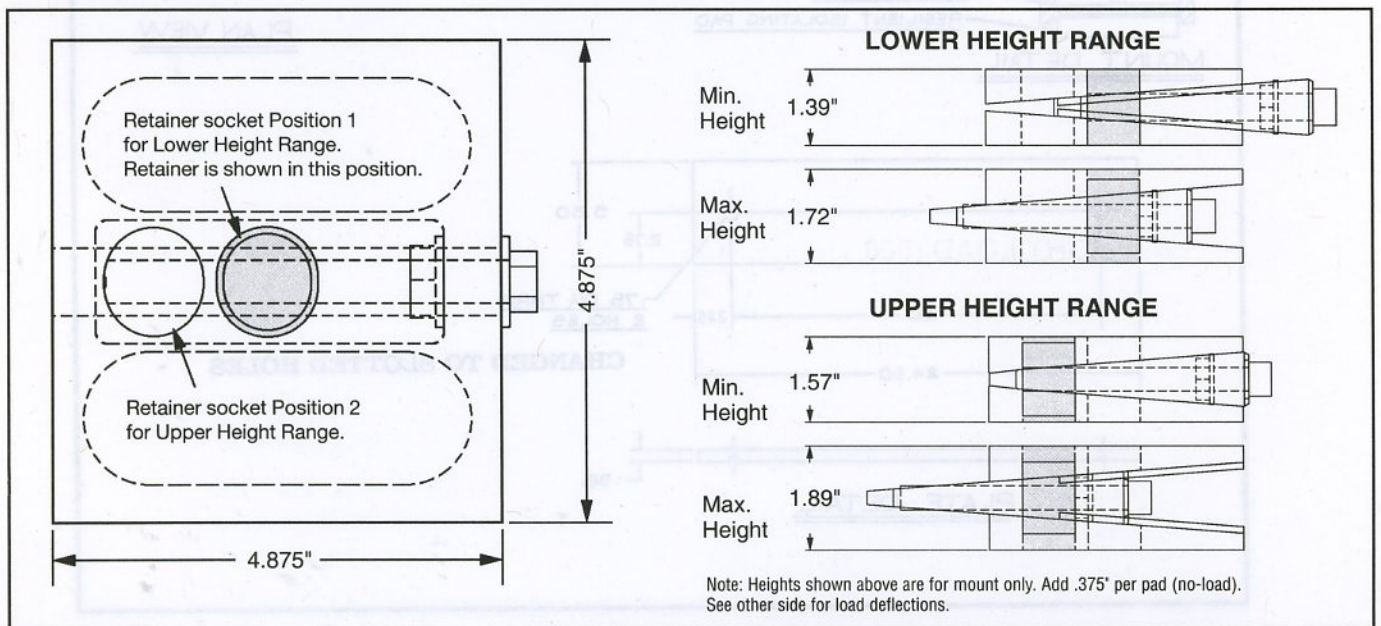
- Use For All In-Place Alignment and Leveling
- Pads Provide Vibration Isolation
- Patent Pending Design on Mounts and Pads

This heavy duty mount utilizes two stationary wedges and one sliding wedge to provide mechanical lift for the mount. An adjusting bolt moves the center wedge fore and aft between stationary wedges to provide lift to the top wedge. Two height ranges are provided, based on the position of a retainer within the mount. The retainer (shaded in the drawing below) can be placed in one of two retaining sockets. Placing the retainer in the socket nearest the adjusting bolt head adjusts the mount through the lower height range. Positioning the retainer in the rear socket moves the mount through the upper height range. Weight of the mount without pads is 5 lbs.

Photo at right shows Load Indicating Machinery Mount Pads on the top and bottom of the mount. See back of sheet for pad details.



\*Patent pending

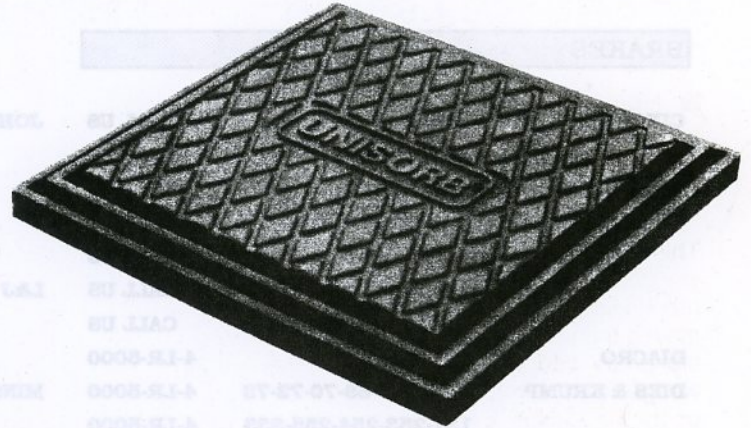




# TRI-WEDGE 8000 MOUNTS

## Load Indicating Machinery Mount Pads\*

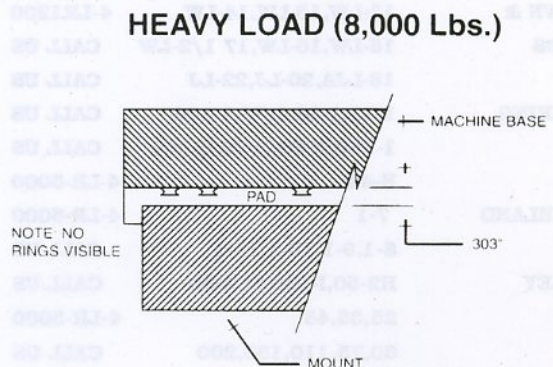
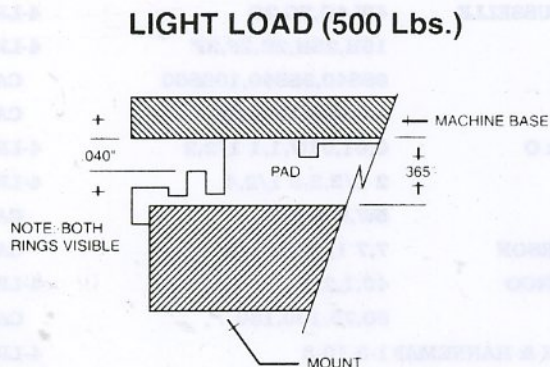
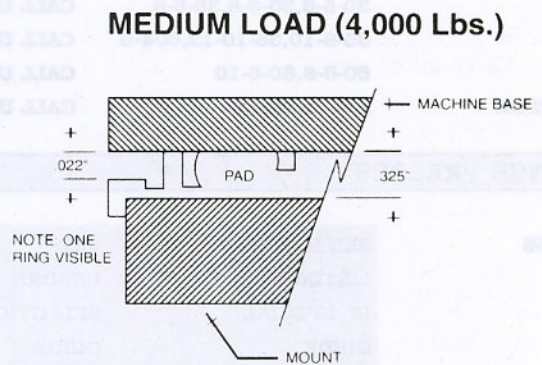
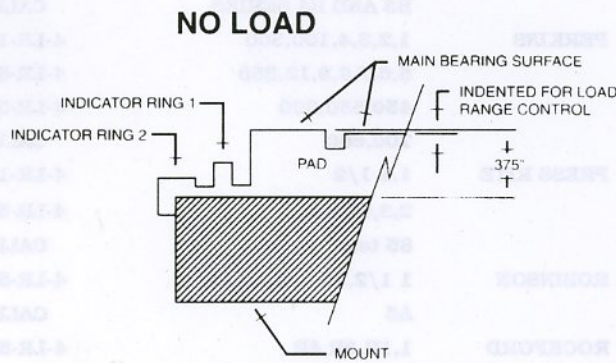
Load bearing rings molded into the top surface of the neoprene pads show the amount of load placed on the mount. Two load indicator rings of different heights are moulded in the pad around the perimeter surface. Viewing the deflection of the compressed rings against a machine base shows the approximate weight placed on the mount and pad surface. Pads are made for machine loads from 500 to 8,000 pounds. They may be used on both the top and bottom surfaces of a mount and provide vibration isolation between the mount and machine base and/or floor.



PADS MAY BE USED ON TOP AND BOTTOM OF MOUNTS

\*Patent pending

### PROFILES SHOWING PAD DEFLECTION



# MACHINERY MOUNT APPLICATION GUIDE

## BENDING MACHINES

BUFFALO	1/2-O-OA1 1/2 1 WR-2	4-LR-5000 CALL US
PINES	3/4 automatic	4-LR-5000

## BRAKES

CINCINNATI	2-30-5', 3-50-6' 3-50-10', 9X10' 90-61, 8, 10'	CALL US CALL US CALL US
CRYL BATH	100-6, 100-8, 100-10 120-8, 120-10, 120-12 150-2, 150-4, 150-6 150-8, *150-10, 150-12	CALL US CALL US CALL US CALL US
DIACRO	36	4-LR-5000
DIES & KRUMP	64-65-67-68-70-72-73 131-253-254-255-333 334-335-338 74-4L6-6L8-8L10-440 406D-408D-410D-454D 456D-458D-504D-506D	4-LR-5000 4-LR-5000 4-LR-5000 CALL US CALL US CALL US
NIAGARA	1B 15-3-4, 15-8-10 25-5-6, 25-6-8 1B-25-8-10, 25-10-12 30-5-6, 30-6-8, 36-6-8 36-8-10, 36-10-12, 604-6 60-6-8, 60-8-10	4-LR-5000 4-LR-5000 CALL US CALL US CALL US CALL US
VERSON	ALL MODELS	CALL US

## PUNCH PRESSES

BLISS	SEE MACHINE LISTINGS IN SPECIAL GUIDE SECTION	SEE UNSORB SELECTION GUIDE SECTION
BROWN & BOGGS	11-LW, 13-LW, 14-LW 15-LW, 16-LW, 17 1/2-LW 18-LJA, 20-LJ, 22-LJ	4-LR1200 CALL US CALL US
CLEARING	1-45, 1-60, 1-75, 1-100 1-150, H-60, H-75, H-100 H-45	CALL US CALL US 4-LR-5000
CLEVELAND	7-1 8-1, 9-1, 10-1, 11-1	4-LR-5000 CALL US
DANLEY	H2-50, I-100, SCZ-50 25, 35, 45	CALL US 4-LR-5000
DENNISON	60, 75, 110, 150, 200 DG604, DF4002 D84, HD-10	CALL US 4-LR-1200 4-LR-5000

FAMCO	52, 53, 54, 55, 56, 59	4-LR-5000
FEDERAL	0, 1, 2 3, 3 1/2, 4, 5 55, 6, 7, 7 1/2, 8	4-LR-1200 4-LR-5000 CALL US
FERRACUTE	C-1, C-G1 C-2, C-3, C-4, C-5 C-6, C-15, C-16, C-17 C-34, C-35, C-36	4-LR-1200 4-LR-5000 CALL US CALL US
JOHNSON	7, 8, G75, 10, 11 W60, W50 19, 3, 4 1/2, 5, 33 44, 55	CALL US CALL US 4-LR-5000 4-LR-5000
L&J	0, 1, 2 3, 4, 4 1/2, 5, 45 36, 27, 22, 18	4-LR-1200 4-LR-5000 4-LR-5000
MINSTER	SEE MACHINE LISTINGS IN SPECIAL GUIDE SECTION	SEE UNSORB SELECTION GUIDE SECTION
NIAGARA	A1, A1 1/2, A1 3/4, A2 A2 1/4, A2 1/2 A3, A3 1/2 A4, A4 1/2 B3 AND B4 SERIES	4-LR-1200 4-LR-5000 4-LR-5000 CALL US CALL US
PERKINS	1, 2, 3, 4, 100, 300 5, 6, 7, 8, 9, 12, 350 450, 550, 600 700, 800	4-LR-1200 4-LR-5000 4-LR-5000 CALL US
PRESS RITE	1, 1 1/2 2, 3, 60 ton 85 ton	4-LR-1200 4-LR-5000 CALL US
ROBINSON	1 1/2, A2 1/2, A3, A4 A5	4-LR-5000 CALL US
ROCKFORD	1, 1R, 3R, 4R 6R, 6 1/2R, TR	4-LR-5000 CALL US
ROUSSELLE	4W, 4G, 3G, 2G 15H, 25H, 2E, 2F, 3F 8SS40, 8SS60, 10SS60 10SS80, 10SS100	4-LR-5000 4-LR-5000 CALL US CALL US
V & O	0, 01, 01W, 1, 1 1/2, 2 2 1/2, 3, 3 1/2, 4 5W, 5 1/2, 6	4-LR-5000 4-LR-5000 CALL US
VERSON	7, 7 1/2, 8, 8 1/2	CALL US
WARCO	40, 1, 2, 3 60, 75, 100, 150	4-LR-5000 CALL US
ZEH & HANNEMAN	1-3, 10-3 1-6, 8-7, 8-8, 8-9 8-12, 9-7, 9-9	4-LR-1200 4-LR-5000 4-LR-5000

CONTACT ACORN TOLL-FREE FOR APPLICATION QUESTIONS ON ANY MACHINE.

# MACHINERY MOUNT APPLICATION GUIDE

## SAWS

DELTA	SPECIFY #	4-LR-5000
DOALL	SPECIFY #	4-LR-5000
KELLER	SPECIFY #	4-LR-5000

## SHEARS

CINCINNATI	ALL MODELS	CALL US
STEELWELD	4B-6,4B-8,4B-10	CALL US
	4B-12,6BC-6,6C-8	CALL US
	6C-10,8CD-6,8D-8	CALL US
WYSON & MILES	1096,10HD,672	CALL US

## WELDERS

FEDERAL	ALL MODELS	4-LR-5000
TAYLOR WINFIELD	ALL MODELS	4-LR-5000

## MACHINERY

## BORING MILLS

BICKFORD	FHS4	CALL US
BRYANT	999	4-LR-5000
EXCELLO	SINGLE END 2112B	4-LR-5000
	OBL END 1212B	4-LR-5000
	112,215A,1212A,218	3-LR-5000
FITCHBURG DUPLEX		FIXATOR
GIDDINGS & LEWIS	65H5T	FIXATOR
HEALD	352-122	CALL US
	121-47A	3-LR-5000
KEARNEY & TRECKER	B HORIZONTAL	CALL US
KING	52"-36"	FIXATOR
LUCAS	42-B-60	FIXATOR

## BROACHES

AMERICAN	H-10-48,T-10-36	6-LR-5000
	TR-4-24,4-6-24	4-LR-5000
FOOTE BURTE	25-66	CALL US
	5-42	CALL US
LAPOINT	32 HORIZONTAL	CALL US
	V8 VERTICAL	CALL US
	50-100 DRV	CALL US

## COMPRESSOR

GARDENER DENVER	ALL MODELS	CALL US
INGERSOLL RAND	ALL MODELS	CALL US
WESTINGHOUSE	ALL MODELS	CALL US

## CLICKERS

USMC	ALL MODELS	CALL US
------	------------	---------

## DIECASTING

CASTMASTER	10A,15A	CALL US
CLEVELAND	50	CALL US
LESTER ENGINEERING	HP-250-SF	CALL US
	HP-450Z-SF,HP-600Z-SF	CALL US
	HP-250X-SF	CALL US
	HP-450X-SF	CALL US
	HP-700X-SF,HP-900-SF	CALL US
	HP-1200X-SF	CALL US
REED PRENTICE	2G	CALL US
WATSON STELMAN	16ES-400	CALL US

## DRILLS

ATLAS	1815	3-LR-1200
ALLEN	3 SPLINLE	4-LR-5000
	DOUBLE SPINDLE	4-LR-5000
AVEY	#1,2,2BMA-6,MA-8	4-LR-5000
	3BMA-6	CALL US
BARNES DRILL	201 1/4,242,262	4-LR-5000
BURGMASER	2BH,2BHT,2BR	4-LR-5000
	25AH	4-LR-5000
	3BH,3BHT,3BHTL	CALL US
CARLTON RADIAL	1A,112X3	CALL US
	3A 11X4,4A-4140	CALL US
CINCINNATI-	21,24",5A-18,3X9	4-LR-5000
BICKFORD	3X11	4-LR-5000
EDLUND	1B-7	4-LR-1200
	1B-12,H2F	4-LR-5000
	2F-12,3B12,4F	4-LR-5000
LELAND GIFFORD	1-2-3MVB	4-LR-5000

## FOUR SLIDES

NILSON	1-2-S-1F,S-F-3	6-LR-5000
--------	----------------	-----------

## GEAR HOBBERERS

BARBER COLEMAN	3-,6-10,10-12	4-LR-5000
	4-6,8-10,14-15	4-LR-5000
	16-11,16-16,16-36,22-16	CALL US
FELLOWS	36,P-400	CALL US
	4GS	
	3GS	3-LR-5000
	6A	6-LR-5000
	7A	5-LR-5000
HAMILTON	0	4-LR-1200

CONTACT ACORN TOLL-FREE FOR APPLICATION QUESTIONS ON ANY MACHINE.

# MACHINERY MOUNT APPLICATION GUIDE

## GEAR HOBBER ( CONT'D )

MICHIGAN	900	CALL US
MIKRON	120,122,79	4-LR-1200
NEWARK	7	CALL US

## GRINDERS

ABRASIVE	M3,M34,1 1/2,38 1218518 3S,18	3-LR-1200-S 3-LR-1200-S 4-LR-5000-S
ARTER	A-3-16,A-8,A-12 B-20,B-24,B-30,B-40 E 12 X 16	4-LR-5000-S CALL US CALL US
BARBER COLEMAN	6-5	CALL US
BLANCHARD	18,11,G15 16-A 36-60	CALL US CALL US CALL US
BOYER-SCHULZ	6-12,6 X18	4-LR-1200
BROWN & SHARPE	#1,2B,2U,4 #5,12 10N	CALL US 4-LR-5000 3-LR-1200
BRYANT	51209 16-28,15-38,24-35 16-16,1330,P4638 2209,2209D	3-LR-5000 CALL US CALL US 4-LR-5000
CINCINNATI	2 CUTTER,2,10,OL 1,6X30,10 PLAIN ER 10X18U,ER 10X36 ER 10X48,ER 10X72 12X36,12X48,12X72 HYDRAULIC	3-LR-5000 CALL US CALL US CALL US CALL US CALL US
COVEL	6X18,10,15,20,22,35,60	4-LR-5000-S
DOALL	D3,D6-1,D6-3,D8-1,D8-3, D10-1,D10-3,G-1,G-10	4-LR-5000 4-LR-5000
EXCELLO	G-3,35,39A 33,33L	CALL US CALL US
GALLMEYER & LIVINGSTON	2D1,2DT,TD1,AD1 BO1,BO2,CO2,O 4,5, 10,12,20,25,28 35,45,55,416,65 8.03504E+13	4-LR-1200 4-LR-1200 4-LR-5000 3-LR-5000 CALL US CALL US
GARDNER	4,14,226,134 11	4-LR-5000-S CALL US
HAMMOND	OK-10,OK-12,WD-10	4-LR-1200
HEALD	50,70,72,221 73281422	CALL US CALL US

## GRINDERS

HEALD ( CONT'D )	180261361 271 272	CALL US CALL US CALL US
HILL-ACME	24X24X72	FIXATOR
INGERSOLL	30"	4-LR-5000
JONES & LAMSON	12X45,6X36 6X15	CALL US 3-LR-5000
K.O. LEE	3-52,KH	4-LR-1200
LANDIS	H4X18,6-8,4X12 12 1/2,CH537,14X36 14X48 CH-1,CH10X24 1224,14X36	4-LR-5000 CALL US CALL US CALL US CALL US
LE BLOND	2	4-LR-5000
MATTISON	20X28X60 36,#24 ROTARY	FIXATOR CALL US
NORTON	ALL MODELS	CALL US
OLIVER	STD TOOL CUTTER,ARC FAC. 20" TOOL BIT,FACE MILL	4-LR-1200 4-LR-5000
PRESCO	6X18	5-LR-5000
PRATT & WHITNEY	14X36,M-1640,14X60 MD-918	CALL US CALL US
REID	2-3,2G,612H,2A 2B,2C,618	4-LR-5000 4-LR-5000
REISHAUER	ZA	CALL US
SELLERS	6T	4-LR-5000
THOMPSON	TYPE B12X18X25,10X24 BB 12X36 TYPE C 12X17C,14X18C,21X28C 22C,35X42C,29,36,43C 22,30,37,44 TYPEC 24,31,38,45 TYPEC 25,32,39,46 TYPEC 26,33,40,47 TYPEC	CALL US CALL US CALL US CALL US FIXATOR FIXATOR FIXATOR FIXATOR FIXATOR FIXATOR
VAN NORMAN	667,452,462,639,620 67,365,766,615,660 413,615,620,626,630	4-LR-5000-S 4-LR-5000-S 4-LR-5000-S
WARDEVELL	618V	4-LR-5000-S

## HAMMERS

CALL ACORN WITH MAKE AND MODEL NUMBER

## INJECTION MOLDING MACHINES

CALL ACORN WITH MAKE AND MODEL NUMBER

CONTACT ACORN TOLL-FREE FOR APPLICATION QUESTIONS ON ANY MACHINE.

# MACHINERY MOUNT APPLICATION GUIDE

## JIG BORERS

SIP	1H	3-LR-5000
	2H,3K	4-LR-5000
FOSDICK	42P,30	CALL US
HAUSER	2A,3BA	3-LR-5000
MOORE	1,2,	4-LR-5000
	1 1/2,3	3-LR-5000
PRATT & WHITNEY	1E,1 1/2	CALL US
	2A	CALL US

## LATHES

ACME	2	CALL US
AMERICAN	20X72,16X54,STYLEB	8-LR-5000
	STYLEC	8-LR-5000
	ALL PACEMAKER MODEL	8-LR-5000
ATLAS	63006308	4-LR-1200
	6304	6-LR-1200
AXELSON	B16X78,20X72	FIXATOR
BARDONS OLIVER	7,7 1/2,2 1/2	8-LR-5000
BARER MAUSER	18X120 TYPE L	6-LR-5000
BOYE & ENMES	16 1/2X30,18 1/2X30	8-LR-5000
	22 1/2 X 48	8-LR-5000
	27 1/2X 48	CALL US
	30X108	CALL US
BULLARD	36" VTL 30" CUTMASTER	CALL US
	34",42"	CALL US
CARDIFF	12	4-LR-5000
CINCINNATI	18	8-LR-5000
	12 1/2X42,22 1/2X48	6-LR-5000
	10 1/2X24,18 1/4X24	6-LR-5000
	20 1/2 X48	6-LR-5000
CLAUSING	6524,6505,17",15"	CALL US
GISHOLT	5,3,4,1L	6-LR-5000
	2L,3L,4L,5L	CALL US
	1F,2F	8-LR-5000
HARDINGE	HCT,DSM-59	4-LR-1200
	HLV,DV,HVL-9	4-LR-1200
HENDY	2 16X30,14X54,12X30	8-LR-5000
	14X30	8-LR-5000
JONES & LAMSON	7B-3,7B-3 1/2,7B-4 1/2	8-LR-5000
	9A,10A	8-LR-5000
	9B,10B	CALL US
LE BLOND	12' ENGINE,14",16",17"	8-LR-5000
	20"	8-LR-5000
	25",32"	FIXATOR
	13" REGAL,15",17",19"	4-LR-5000
	21",24"	4-LR-5000
	30",16/38,25/50,32/60	CALL US

LODGE & SHIPLEY	P1,2013X54,2013X178	8-LR-5000
	60TmX25X72,20X144	CALL US
	16X30,14X54,A-12,A-16	8-LR-5000
MONARCH	16X54,6X78	8-LR-5000
	18X144	FIXATOR
	CK-12,W-16",BB-18,C-28	8-LR-5000
POTTER JOHNSON	M-20,SERIES 61	8-LR-5000
	0,000,2,12	CALL US
WARNER & SWASEY	P400	CALL US
	#3,2,4,5	6-LR-5000

## MILLING MACHINES

BRIDGEPORT	ALL MODELS	SEE BP KITS
	MOUNTING BKT REG"D	
BROWN & SHARPE	0,000,2,12	4-LR-5000-SP
CINCINNATI	1B,1M	4-LR-5000
	4,5,6,	CALL US
	14-48L	CALL US
CLAUSING	8520	4-LR-1200
DIAMOND	22M	4-LR-1200
GORTON	0-16A,8D,8 1/2D	4-LR-500-SP
	P1-3,P2-3,P3-2	4-LR-500-SP
	2-28,3-34,3-48	CALL US
GREAVES	2H	4-LR-500-SP
KEARNEY & TRECKER	18CH,D,2D,1CE,1CH	4-LR-5000
	3CE,3KM,3CSM	CALL US
	330TF,415-TF	CALL US
KENT-OWENS	1M	4-LR-1200-SP
	2RV	4-LR-5000-SP
MILWAUKEE	2,4,MODEL K&H	CALL US
PRATT & WHITNEY	B 13X30,30",40"	5-LR-5000-SP
	BL3620 KELLERDL	CALL US
SUNDSTRAND	1,0,	4-LR-5000
	22-1224,22-1236,22-1248	CALL US
	33-1872,33-1896	CALL US
	55-1848	CALL US
	33D-1472,55-1872	CALL US
	55-1986,55-18120,55-2496	FIXATOR
	55-24120	FIXATOR
55-24144,55-24168	FIXATOR	
	55D-2496,55D-24120	FIXATOR
	55D-24144,55D-24168	FIXATOR
VAN NORMAN	ALL MODELS	4-LR-5000

## SCREW MACHINES

BROWN & SHARPE	00,00G,4	4-LR-500
DAVENPORT	ALL MODELS	4-LR-5000
WARNER & SWASEY	2AC,3AC,M2530	CALL US

## SHAPERS

FELLOWS & ONSRUD	ALL MODELS	CALL US
------------------	------------	---------

CONTACT ACORN TOLL-FREE FOR APPLICATION QUESTIONS ON ANY MACHINE.

# MACHINERY INSTALLATION SYSTEMS

## UNISORB MACHINERY INSTALLATION SYSTEMS Parts List For Model R Level-Rite Mounts

MOUNT	HOUSING SIZE	PAD		LEVELING SCREW O.A.L.	LOCK NUT	LOCK WASHER	LEVELING DISK	
		TYPE	SIZE				DIAMETER	THICKNESS
R-5	3-1/2x3-1/2	SB-1/2	3x3	1/2-13	1/2	1/2	1-3/4	7/8
R-9	3-1/2x3-1/2	SB-1/2	3x3	1/2-13	1/2	1/2	1-3/4	7/8
R-16	4-1/2x4-1/2	SB-1/2	4x4	5/8-11	5/8	5/8	1-3/4	7/8
R-27	3-1/2x3-1/2	FB-1/2	3x3	1/2-13	1/2	1/2	1-3/4	7/8
R-36	6-1/2x6-1/2	SB-1/2	6x6	1-8	1	1	2-1/4	1
R-48	4-1/2x4-1/2	FB-1/2	4x4	5/8-11	5/8	5/8	1-3/4	7/8
R-100	6-1/2x6-1/2	FB-1/2	6x6	1-8	1	1	2-1/4	1

## UNISORB MACHINERY INSTALLATION SYSTEMS ISOLATION EFFICIENCY CHART

### Unisorb Level-Rite Mount Model U-9

Load On Mount (lbs)	% Isolation At		
	15 Hz	20 Hz	30 Hz 50 Hz
50	--	--	30 85
100	--	--	68 89
150	--	20	75 93
200	--	30	82 94
300	--	55	85 95
400	--	65	86 96
500	20	68	87 96
600	30	70	89 96
700	37	72	90 96
800	40	74	91 96
900	45	75	92 97

# MACHINERY INSTALLATION PROCEDURES - U MOUNTS

## LEVEL-RITE "U" MOUNTS

### INSTALLATION PROCEDURES

1. Clean floor, removing all oil, grease and debris.
2. Bring machine into location and raise sufficiently to allow mounts to be positioned directly under the leveling bolts in the machine feet.
3. Lower machine until all leveling bolts are seated in the dimples in the top of the mounts.
4. Adjust each leveling bolt until machine is level.
5. After 2 hours and 24 hours of operation recheck the machine for level, and readjust as required.

SPECIFICATIONS			
MODEL	MAX LOAD	A HEIGHT	B BASE SIZE
U-5	500	1.00	3 X 3
U-9	900	1.00	3 X 3
U-16	1,600	1.00	4 X 4
U-27	2,700	1.00	3 X 3
U-36	3,600	1.50	6 X 6
U-48	4,800	1.00	4 X 4
U-100	10,800	1.50	6 X 6

Dimensions are in inches.  
Weights are in pounds.

