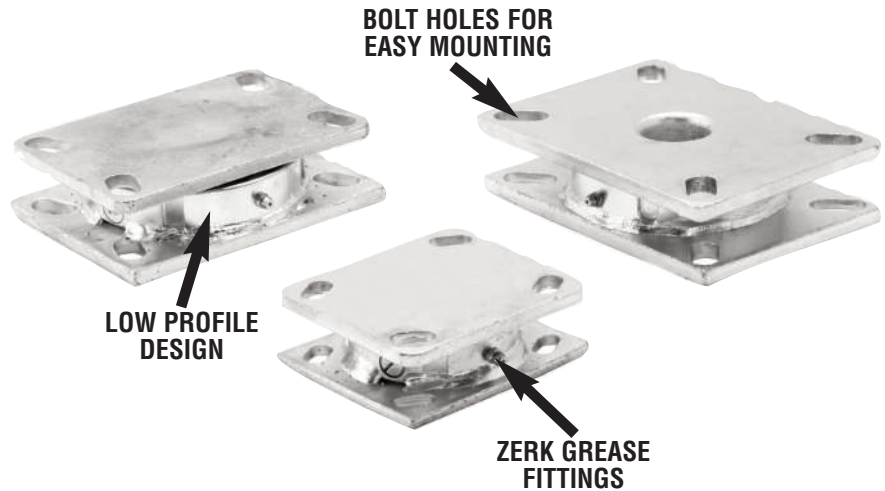


TURNTABLES

- Capacity up to 10 tons.
- A proven workhorse in the most abusive applications.
- Maximize workspace...enables workers to remain in one position and rotate items they're working with from all sides.
- Zinc plated finish.
- Kingpinless design for added strength and durability.



“Forged Steel” Construction • Plates are AISI 1045 steel one-piece forging precision machined and through-hardened. Bearing mounted on precision machined raceway.

Part Number	Description	Top Plate Size (inch)	Overall Height (inch)	Capacity (lbs.)
TT100000	1/4" thick mounting plates, 3/8" ball bearings	4" x 4-1/2"	1.73"	1700
TT300000	5/16" mounting plates, 1/2" ball bearings	4-1/2" x 6-1/4"	1.73"	5500
TT400000	3/8" thick mounting plates, 1/2" ball bearings	5-1/4" x 7-1/4"	1.73"	5500
TT600000	1/2" thick mounting plates, 3/4" ball bearings 4-1/2" raceway	6-1/4" x 7-1/4"	2.75"	10000
TT700000	1/2" thick mounting plates, 3/4" ball bearings 7" raceway	8-1/2" x 8-1/2"	3.125"	20000

“Stamped Steel” Construction • Plates are AISI 1045 heat treated steel welded inside and out. Bearing mounted on heat treated machined raceway.

Part Number	Description	Top Plate Size (inch)	Overall Height (inch)	Capacity (lbs.)
TT110000	1/4" thick mounting plates, 3/8" ball bearings	4" x 4-1/2"	1.53"	1400
TT310000	5/16" mounting plates, 1/2" ball bearings	4-1/2" x 6-1/4"	1.75"	4100
TT410000	3/8" thick mounting plates, 1/2" ball bearings	5-1/4" x 7-1/4"	1.75"	5400
TT610000	1/2" thick mounting plates, 3/4" ball bearings 4-1/2" raceway	6-1/4" x 7-1/4"	2.78"	9500