

# 7KE ECONOMICAL KINGPINLESS CASTERS



## SWIVEL CROSS SECTION



- **Top Plate:** 5/16" AISI 1045 heat treated steel welded inside and out for longer life.
- **Swivel Section:** One row of 1/2" ball bearings mounted in a heat treated precision machined raceway. Zerk in swivel section.
- **Yoke Base:** Notched AISI 1045 steel.
- **Legs:** 3/8" thick welded inside and out.
- **Axle:** 3/4" diameter.
- **Finish:** RoHS Zinc plating, for greater corrosion resistance than paint.

## 3,500 LBS. LOAD CAPACITY KINGPINLESS CASTERS

### Economical 3" Wide Kingpinless Caster

*Ideal for customers on the border of exceeding 2" wide capacities or safety factors, or where a premium 3" wide caster may be overkill for the application or budget. The 7KE Series is your new, tested, heavy-duty solution.*

*The new 7KE Series provides economical 3" wide solutions that can be easily stocked in components for quick turnaround and inventory flexibility, or purchased as complete casters for large, competitive customer needs.*

- Kingpinless construction eliminates kingpin failure, and better handles shock/impact.
- ANSI ICWM: 2012 tested for capacities up to 3,500 lbs.
- 3" wide tread widths.
- 6, 8, 10 and 12 inch sizes.
- Legs welded inside and outside for strength (both swivel & rigids).
- Heat treated raceway.
- 1 Year warranty.
- Field installable Swivel Lock available.

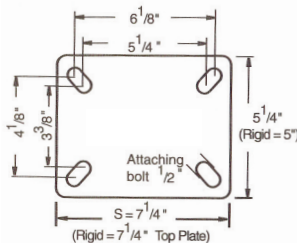
## MOUNTING PLATE OPTIONS

### TOP PLATE: (STANDARD)

**Plate Size:** 5-1/4" x 7-1/4"

**Bolt Holes:** 3-3/8" x 5-1/4" slotted to 4-1/8" x 6-1/8"

**Attaching Bolt Size:** 1/2"



## BRAKE KIT OPTIONS



**Face Contact**  
specify **7KEFBB**

Available in  
6, 8, 10 & 12 inch

## SWIVEL LOCK

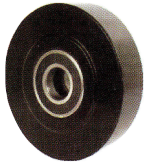


**Field Installable Swivel Lock**  
specify **7KEDL**

## BEARING OPTIONS

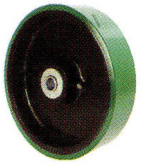
- Roller Bearings **(01)**
- Taper Bearings **(09)**
- Precision Ball **(29)**

# 7KE ECONOMICAL KINGPINLESS CASTERS



**NY/MD**  
NYLACRON™ WHEELS

Part Number Swivel Caster	Part Number Rigid Caster	Wheel Diameter (inch)	Tread Width (inch)	Load Capacity (lbs)	Overall Height (inch)	Swivel Radius (inch)
7KES63NYMDBB	7KER63NYMDBB	6	3	3500	7-1/2	5-1/2
7KES83NYMDBB	7KER83NYMDBB	8	3	3500	10-1/8	6-1/2
7KES103NYMDBB	7KER103NYMDBB	10	3	3500	11-1/2	7-3/4
7KES123NYMDBB	7KER123NYMDBB	12	3	3500	13-1/2	9-1/4



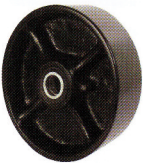
**PU**  
POLYURETHANE ON CAST IRON CORE

Part Number Swivel Caster	Part Number Rigid Caster	Wheel Diameter (inch)	Tread Width (inch)	Load Capacity (lbs)	Overall Height (inch)	Swivel Radius (inch)
7KES63PUBB	7KER63PUBB	6	3	2000	7-1/2	5-1/2
7KES83PUBB	7KER83PUBB	8	3	2500	10-1/8	6-1/2
7KES103PUBB	7KER103PUBB	10	3	3000	11-1/2	7-3/4
7KES123PUBB	7KER123PUBB	12	3	3000	13-1/2	9-1/4



**PF**  
POLYURETHANE ON HD CAST IRON CORE

Part Number Swivel Caster	Part Number Rigid Caster	Wheel Diameter (inch)	Tread Width (inch)	Load Capacity (lbs)	Overall Height (inch)	Swivel Radius (inch)
7KES63PFBB	7KER63PFBB	6	3	3000	7-1/2	5-1/2
7KES83PFBB	7KER83PFBB	8	3	3000	10-1/8	6-1/2
7KES103PFBB	7KER103PFBB	10	3	3000	11-1/2	7-3/4
7KES123PFBB	7KER123PFBB	12	3	3000	13-1/2	9-1/4



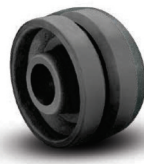
**DS**  
DUCTILE CAST STEEL WHEELS

Part Number Swivel Caster	Part Number Rigid Caster	Wheel Diameter (inch)	Tread Width (inch)	Load Capacity (lbs)	Overall Height (inch)	Swivel Radius (inch)
7KES63DSBB	7KER63DSBB	6	3	2000	7-1/2	5-1/2
7KES83DSBB	7KER83DSBB	8	3	2500	10-1/8	6-1/2
7KES103DSBB	7KER103DSBB	10	3	3000	11-1/2	7-3/4
7KES123DSBB	7KER123DSBB	12	3	3000	13-1/2	9-1/4



**TM**  
PHENOLIC WHEELS

Part Number Swivel Caster	Part Number Rigid Caster	Wheel Diameter (inch)	Tread Width (inch)	Load Capacity (lbs)	Overall Height (inch)	Swivel Radius (inch)
7KES63TMBB	7KER63TMBB	6	3	2000	7-1/2	5-1/2
7KES83TMBB	7KER83TMBB	8	3	2500	10-1/8	6-1/2
7KES103TMBB	7KER103TMBB	10	3	3000	11-1/2	7-3/4
7KES123TMBB	7KER123TMBB	12	3	3000	13-1/2	9-1/4



**VM**  
DUCTILE VGROOVE

Part Number Swivel Caster	Part Number Rigid Caster	Wheel Diameter (inch)	Tread Width (inch)	Load Capacity (lbs)	Overall Height (inch)	Swivel Radius (inch)
7KES63VMBB	7KER63VMBB	6	3	3500	7-1/2	5-1/2
7KES83VMBB	7KER83VMBB	8	3	3500	10-1/8	6-1/2
7KES103VMBB	7KER103VMBB	10	3	3500	11-1/2	7-3/4

OTHER WHEELS AVAILABLE