

# 6KE ECONOMICAL KINGPINLESS CASTERS



SWIVEL CROSS SECTION



- **Top Plate:** 5/16" AISI 1045 heat treated steel welded inside and out for longer life.
- **Swivel Section:** One row of 1/2" ball bearings mounted in a heat treated precision machined raceway. Zerk in swivel section.
- **Yoke Base:** Notched AISI 1045 steel.
- **Legs:** 3/8" thick welded inside and out.
- **Axle:** 3/4" diameter.
- **Finish:** RoHS Zinc plating, for greater corrosion resistance than paint.

## 3,000 LBS. LOAD CAPACITY KINGPINLESS CASTERS

### Economical 3" Wide Kingpinless Caster

*Ideal for customers on the border of exceeding 2" wide capacities or safety factors, or where a premium 3" wide caster may be overkill for the application or budget. The 6KE Series is your new, tested, heavy-duty solution.*

*The new 6KE Series provides economical 3" wide solutions that can be easily stocked in components for quick turnaround and inventory flexibility, or purchased as complete casters for large, competitive customer needs.*

- Kingpinless construction eliminates kingpin failure, and better handles shock/impact.
- ANSI ICWM: 2012 tested for capacities up to 3,000 lbs.
- 3" wide tread widths.
- 6, 8, 10 and 12 inch sizes.
- Legs welded inside and outside for strength (both swivel & rigids).
- Heat treated raceway.
- 1 Year warranty.
- Field installable Swivel Lock available.

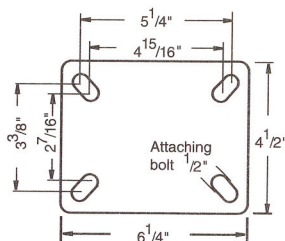
### MOUNTING PLATE OPTIONS

#### TOP PLATE: (STANDARD)

**Plate Size:** 4-1/2" x 6-1/4"

**Bolt Holes:** 2-7/16" x 4-15/16" slotted to 3-3/8" x 5-1/4"

**Attaching Bolt Size:** 1/2"



### BRAKE KIT OPTIONS



**Face Contact**  
specify **6KEFBB**

Available in  
6, 8, 10 & 12 inch

### SWIVEL LOCK

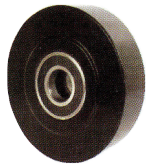


**Field Installable Swivel Lock**  
specify **6KEDL**

### BEARING OPTIONS

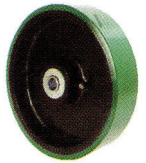
- Roller Bearings (01)
- Taper Bearings (09)
- Precision Ball (29)

# 6KE ECONOMICAL KINGPINLESS CASTERS



**NY/MD**  
NYLACRON™ WHEELS

Part Number Swivel Caster	Part Number Rigid Caster	Wheel Diameter (inch)	Tread Width (inch)	Load Capacity (lbs)	Overall Height (inch)	Swivel Radius (inch)
6KES63NYMDBB	6KER63NYMDBB	6	3	3000	7-1/2	5-1/2
6KES83NYMDBB	6KER83NYMDBB	8	3	3000	10-1/8	6-1/2
6KES103NYMDBB	6KER103NYMDBB	10	3	3000	11-1/2	7-3/4
6KES123NYMDBB	6KER123NYMDBB	12	3	3000	13-1/2	9-1/4



**PU**  
POLYURETHANE ON CAST IRON CORE

Part Number Swivel Caster	Part Number Rigid Caster	Wheel Diameter (inch)	Tread Width (inch)	Load Capacity (lbs)	Overall Height (inch)	Swivel Radius (inch)
6KES63PUBB	6KER63PUBB	6	3	2000	7-1/2	5-1/2
6KES83PUBB	6KER83PUBB	8	3	2500	10-1/8	6-1/2
6KES103PUBB	6KER103PUBB	10	3	3000	11-1/2	7-3/4
6KES123PUBB	6KER123PUBB	12	3	3000	13-1/2	9-1/4



**PF**  
POLYURETHANE ON HD CAST IRON CORE

Part Number Swivel Caster	Part Number Rigid Caster	Wheel Diameter (inch)	Tread Width (inch)	Load Capacity (lbs)	Overall Height (inch)	Swivel Radius (inch)
6KES63PFBB	6KER63PFBB	6	3	3000	7-1/2	5-1/2
6KES83PFBB	6KER83PFBB	8	3	3000	10-1/8	6-1/2
6KES103PFBB	6KER103PFBB	10	3	3000	11-1/2	7-3/4
6KES123PFBB	6KER123PFBB	12	3	3000	13-1/2	9-1/4



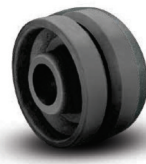
**DS**  
DUCTILE CAST STEEL WHEELS

Part Number Swivel Caster	Part Number Rigid Caster	Wheel Diameter (inch)	Tread Width (inch)	Load Capacity (lbs)	Overall Height (inch)	Swivel Radius (inch)
6KES63DSBB	6KER63DSBB	6	3	2000	7-1/2	5-1/2
6KES83DSBB	6KER83DSBB	8	3	2500	10-1/8	6-1/2
6KES103DSBB	6KER103DSBB	10	3	3000	11-1/2	7-3/4
6KES123DSBB	6KER123DSBB	12	3	3000	13-1/2	9-1/4



**TM**  
PHENOLIC WHEELS

Part Number Swivel Caster	Part Number Rigid Caster	Wheel Diameter (inch)	Tread Width (inch)	Load Capacity (lbs)	Overall Height (inch)	Swivel Radius (inch)
6KES63TMBB	6KER63TMBB	6	3	2000	7-1/2	5-1/2
6KES83TMBB	6KER83TMBB	8	3	2500	10-1/8	6-1/2
6KES103TMBB	6KER103TMBB	10	3	3000	11-1/2	7-3/4
6KES123TMBB	6KER123TMBB	12	3	3000	13-1/2	9-1/4



**VM**  
DUCTILE V GROOVE

Part Number Swivel Caster	Part Number Rigid Caster	Wheel Diameter (inch)	Tread Width (inch)	Load Capacity (lbs)	Overall Height (inch)	Swivel Radius (inch)
6KES63VMBB	6KER63VMBB	6	3	3000	7-1/2	5-1/2
6KES83VMBB	6KER83VMBB	8	3	3000	10-1/8	6-1/2
6KES103VMBB	6KER103VMBB	10	3	3000	11-1/2	7-3/4

OTHER WHEELS AVAILABLE