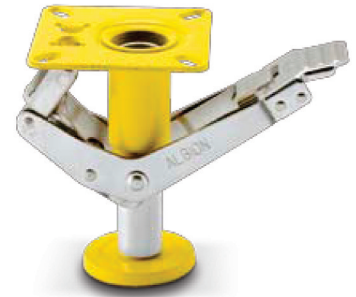


# FLOOR LOCKS

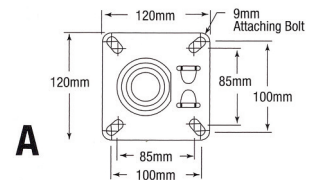
## 16 LE Series

- Top plate fitting medium duty truck lock.
- Extra heavy duty construction.
- Safely secures the truck in position while loading or unloading.
- Instantly released by slight downward pressure.
- Large diameter, non-skid rubber pad ensures firm grip to uneven ground surfaces.
- Operating force does not vary with load.
- Finish: Zinc plated or ROHS compliant.



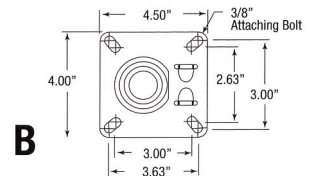
### STANDARD 16 SERIES TOP PLATE (DRAWING A)

Wheel Diameter (inch)	Caster Height (inch)	Retracted Clearance (inch)	Approx. Weight (lbs.)	Part Number
5	6-1/2	1-1/2	3-3/4	16LE0580
6	7-1/4	1-1/2	3-3/4	16LE0680
8	9-1/2	1-1/2	3-3/4	16LE0780
6	7-1/2	1-1/2	3-3/4	110LE0680
8	10-1/8	1-1/2	3-3/4	110LE0880



### INTERNATIONAL ISO TOP PLATE (DRAWING B)

Wheel Diameter (inch)	Caster Height (inch)	Retracted Clearance (inch)	Approx. Weight (lbs.)	Part Number
6	210mm	1-1/2	3-3/4	16LE0690
8	259mm	1-1/2	3-3/4	16LE0890

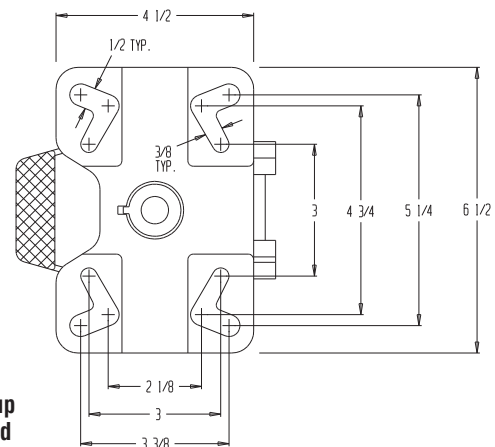


## FL-ADJ Series

This one of a kind floor lock includes an adjustable height foot pad that will work on carts with different caster heights. The adjustable height feature provides uniform locking and safety unlocking force for better ergonomic operation. This feature also keeps the floor lock working properly as spring and pads wear over time. Height is adjustable by turning the bottom pad. This unit has a bright zinc plated finish with heavy-duty cast steel construction. The bottom pad includes suction cups for extra grip.



Suction cup bottom pad



Part Number	Extended Height (inch)	Retracted Height (inch)	Used with Caster Size (inch)	Approx. Wt. (lbs.)
<b>Zinc plated finish with heavy-duty steel construction</b>				
FLADJ46	5-3/4" to 8"	4-3/4" to 7"	4" - 6"	9
FLADJ810	7-5/8" to 10-7/8"	6-1/4" to 9-1/2"	8" - 10"	11

### Stainless Steel Construction

FLADJ46SS	5-3/4" to 8"	4-3/4" to 7"	4" - 6"	9
FLADJ810SS	7-5/8" to 10-7/8"	6-1/4" to 9-1/2"	8" - 10"	11

# FLOOR LOCKS

## Standard Steel Floor Locks

Model Number	Height Unlocked	Height Locked	Bolt Hole Centers	Bolt Hole Spacing	Top Plate Size	Bolt Hole Size	Weight (Approx)
FL4	4-1/2"	5-5/8"	3" x 3"	2-5/8" x 3-5/8"	4" x 4-1/2"	3/8"	3.5
FL5	5-3/8"	6-1/2"	3" x 3"	2-5/8" x 3-5/8"	4" x 4-1/2"	3/8"	4
FL6	6-1/2"	7-1/2"	3" x 3"	2-5/8" x 3-5/8"	4" x 4-1/2"	3/8"	4
FL8	8-1/2"	9-1/2"	3" x 3"	2-5/8" x 3-5/8"	4" x 4-1/2"	3/8"	4

Standard Steel Floor Locks (FL)



Stainless Steel Floor Locks (SSFL)



## Stainless Steel Floor Locks

Model Number	Height Unlocked	Height Locked	Bolt Hole Centers	Bolt Hole Spacing	Top Plate Size	Bolt Hole Size	Weight (Approx)
SSFL4	4-1/2"	5-5/8"	3" x 3"	2-5/8" x 3-5/8"	4" x 4-1/2"	3/8"	3.5
SSFL5	5-3/8"	6-1/2"	3" x 3"	2-5/8" x 3-5/8"	4" x 4-1/2"	3/8"	4
SSFL6	6-1/2"	7-1/2"	3" x 3"	2-5/8" x 3-5/8"	4" x 4-1/2"	3/8"	4
SSFL8	8-1/2"	9-1/2"	3" x 3"	2-5/8" x 3-5/8"	4" x 4-1/2"	3/8"	4

Typical Floor or Truck Lock Installation Configuration

