

4 110 SERIES KINGPINLESS CASTERS

1,500 LBS. LOAD CAPACITY STAINLESS STEEL KINGPINLESS TYPE CASTERS



- **Top Plate:** 5/16" AISI 1045 steel welded and heat treated for longer life
- **Yoke Base:** Notched AISI 1045 steel
- **Swivel Section:** One row of 3/8" ball bearings mounted in a precision machined raceway. Zerk in swivel section
- **Fork Legs:** 1/4" steel, formed to increase strength and welded on inside and outside yoke base. Fork lift spacing 2-1/2"
- **Axle:** 1/2" diameter hollow axle with zerk fitting on roller and tapered bearing models (Solid axle on Delrin, precision ball, and Oilex models)
- **Finish:** Zinc plating
- Alternate or custom caster configurations available

BRAKES OPTIONS



Cam
specify **CB110**

Face Brake
specify **FBC**

Face Brake
specify **FBB**

Foot Activated Swivel Lock
specify **SL 160002**

Stamped Steel fully heat treated construction.

TYPICAL APPLICATIONS

- Dollies
- Dough troughs
- Platform trucks
- Tow line
- Utility carts
- Tooling fixtures
- Scrap metal carriers

ALL WHEELS AVAILABLE WITH ROLLER BEARINGS OR DELRIN BUSHING

MOUNTING PLATE OPTIONS

TOP PLATE: 16 (STANDARD)

Plate Size: 4" x 4-1/2"
Bolt Holes: 2-5/8" x 3-5/8" slotted to 3" x 3"
Bolt Size: 3/8"

TOP PLATE: K

Plate Size: 4-1/2" x 6-1/4"
Bolt Holes: 5-1/4" x 3-3/8" slotted to 4-15/16" x 2-7/16"
Bolt Size: 1/2"

TOP PLATE: D

Plate Size: 5" x 5-1/2"
Bolt Holes: 4-1/8" x 4-1/2"
Bolt Size: 3/8"

TOP PLATE: J

Plate Size: 4" x 5"
Bolt Holes: 4" x 3" slotted to 3-3/8" x 2-5/8"
Bolt Size: 5/8"

*Add options to end of part number

BEARING OPTIONS

Roller Bearing (01)
Industrial Ball (27)
Precision Ball (28)

4 110 SERIES KINGPINLESS CASTERS

X-TRA ROUND TREAD 29 PEDESTAL PRECISION XR

- Precision Ball Bearings

Part Number Swivel Caster	Part Number Rigid Caster	Wheel Diameter (inch)	Tread Width (inch)	Load Capacity (lbs)	Overall Height (inch)	Swivel Lead (inch)	Approx. Weight (lbs)
110XR06229S	110XR06229R	6	2	600	7-1/2	1-3/4	6-1/2
110XR08229S	110XR08229R	8	2	675	9-1/2	1-3/4	7-1/2



EXTREME PLUS SOLID ELASTOMER XP

- Hardness: 60 Shore D
- Premium Polyurethane
- Excellent for towing applications
- Precision Ball Bearings
- Wheel Face: Moderate crown
- Temperature Range: up to +250°F

Part Number Swivel Caster	Part Number Rigid Caster	Wheel Diameter (inch)	Tread Width (inch)	Load Capacity (lbs)	Overall Height (inch)	Swivel Lead (inch)	Approx. Weight (lbs)
110XP04228S	110XP04228R	4	2	1200	6-1/2	1-5/8	5-1/2
110XP05228S	110XP05228R	5	2	1200	6-1/2	1-5/8	5-1/2
110XP06228S	110XP06228R	6	2	1200	7-1/2	1-3/4	6-1/2
110XP08228S	110XP08228R	8	2	1200	9-1/2	1-3/4	8-1/2



X-TREME™ PLUS SOLID POLYURETHANE 29 PEDESTAL PRECISION XP

- Precision Ball Bearings

Part Number Swivel Caster	Part Number Rigid Caster	Wheel Diameter (inch)	Tread Width (inch)	Load Capacity (lbs)	Overall Height (inch)	Swivel Lead (inch)	Approx. Weight (lbs)
110XP04229S	110XP04229R	4	2	1250	5-5/8	1-7/16	6
110XP05229S	110XP05229R	5	2	1250	6-1/2	1-5/8	6-1/2
110XP06229S	110XP06229R	6	2	1250	7-1/2	1-7/8	7-1/4
110XP08229S	110XP08229R	8	2	1250	9-1/2	2-3/8	9



ELASTIC BLUE RUBBER BALL BEARING ERB

- Elastic solid rubber, smooth rolling quality
- Color Blue, 65° + 3° shore A
- Vulcanized, for non-detachable bond, low rolling resistance
- Precision Ball Bearings
- Made of aluminum die-cast, corrosion-resistant, with dual sealed precision ball bearings

Part Number Swivel Caster	Part Number Rigid Caster	Wheel Diameter (inch)	Tread Width (inch)	Load Capacity (lbs)	Overall Height (inch)	Swivel Lead (inch)	Approx. Weight (lbs)
110ERB06229S	110ERB06229R	6	2	660	7-1/2	1-3/4	6-1/2
110ERB08229S	110ERB08229R	8	2	800	9-1/2	1-3/4	7-1/2



4 110 SERIES KINGPINLESS CASTERS

POLYURETHANE ON ALUMINUM ROUND TREAD 28 PRECISION BALL BEARING PM95A

- Composed of a polyurethane elastomer open cast or injection molded, on clean, close tolerance cores
- Wheels feature a chemical and mechanical lock of tread to the core
- High capacity polyurethane protects floors
- Non-marking
- Delivers quieter operation than standard metal wheels

Part Number Swivel Caster	Part Number Rigid Caster	Wheel Diameter (inch)	Tread Width (inch)	Load Capacity (lbs)	Overall Height (inch)	Swivel Lead (inch)	Approx. Weight (lbs)
110PM05228S	110PM05228R	5	2	1000	6-1/2	1-3/8	6
110PM06228S	110PM06228R	6	2	1250	7-1/2	1-9/16	7
110PM08228S	110PM08228R	8	2	1500	10-1/8	2-1/4	9



POLYURETHANE ON POLYPROPYLENE 29 PEDESTAL PRECISION PM80A

- Precision Pedestal Bearing

Part Number Swivel Caster	Part Number Rigid Caster	Wheel Diameter (inch)	Tread Width (inch)	Load Capacity (lbs)	Overall Height (inch)	Swivel Lead (inch)	Approx. Weight (lbs)
110PM0522880AS	110PM0522880AR	5	2	1000	6-1/2	1-3/8	5-1/2
110PM0622880AS	110PM0622880AR	6	2	1250	7-1/2	1-9/16	6-1/2
110PM0822880AS	110PM0822880AR	8	2	1500	10-1/8	2-1/4	8-1/2



MAXIM® 29 PEDESTAL PRECISION NG

- Precision Pedestal Bearing

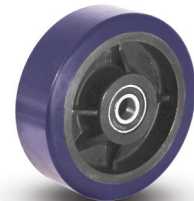
Part Number Swivel Caster	Part Number Rigid Caster	Wheel Diameter (inch)	Tread Width (inch)	Load Capacity (lbs)	Overall Height (inch)	Swivel Lead (inch)	Approx. Weight (lbs)
110NG04229S	110NG04229R	4	2	800	5-5/8	1-7/16	6
110NG05229S	110NG05229R	5	2	1000	6-1/2	1-5/8	6-1/2
110NG06229S	110NG06229R	6	2	1200	7-1/2	1-7/8	7-1/4
110NG08229S	110NG08229R	8	2	1400	9-1/2	2-3/8	9



URETHANE ON BLACK NYLON 28 PRECISION BALL BEARING XG

- Offers greater load capacity than rubber
- Resists chemicals, acids, caustic, and oils
- Precision Ball Bearings
- Excellent for use in applications where ergonomic floor protective wheels are needed

Part Number Swivel Caster	Part Number Rigid Caster	Wheel Diameter (inch)	Tread Width (inch)	Load Capacity (lbs)	Overall Height (inch)	Swivel Lead (inch)	Approx. Weight (lbs)
110XG06228S	110XG06228R	6	2	900	7-1/2	1-9/16	7-1/4
110XG08228S	110XG08228R	8	2	900	10-1/8	2-1/4	9

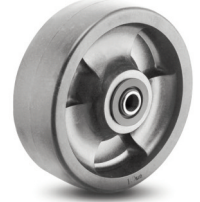


4 110 SERIES KINGPINLESS CASTERS

HEAVY DUTY REINFORCED THERMOPLASTIC 28 PRECISION BALL BEARING DT

- Creates a stronger and higher impact resistant wheel
- Glass reinforced nylon material
- Precision Ball Bearings
- Ideal for applications subject to strong impact and abuse

Part Number Swivel Caster	Part Number Rigid Caster	Wheel Diameter (inch)	Tread Width (inch)	Load Capacity (lbs)	Overall Height (inch)	Swivel Lead (inch)	Approx. Weight (lbs)
110DT04228S	110DT04228R	4	2	1000	5-5/8	1-3/16	6
110DT05228S	110DT05228R	5	2	1200	6-1/2	1-3/8	6-1/2
110DT06228S	110DT06228R	6	2	1400	7-1/2	1-9/16	7-1/4
110DT08228S	110DT08228R	8	2	1600	10-1/8	2-1/4	9



POLYURETHANE ON CAST IRON 28 PRECISION BALL BEARING PY95A

- Chemically bonded to a cast iron core
- High capacity polyurethane protects floors
- Non-marking
- Precision Ball Bearings
- Delivers quieter operation than standard metal wheels

Part Number Swivel Caster	Part Number Rigid Caster	Wheel Diameter (inch)	Tread Width (inch)	Load Capacity (lbs)	Overall Height (inch)	Swivel Lead (inch)	Approx. Weight (lbs)
110PY06228S	110PY06228R	6	2	1230	6-1/2	1-3/8	6
110PY08228S	110PY08228R	8	2	1500	7-1/2	1-9/16	7
110PY10228S	110PY10228R	10	2	1700	10-1/8	2-1/4	9



ETHANE POLYURETHANE ON CAST IRON 28 PRECISION BALL BEARING PY80A

- Chemically bonded to a cast iron core
- High capacity polyurethane protects floors
- Non-marking
- Precision Ball Bearings
- Delivers quieter operation than standard metal wheels
- Rejects metal chips, debris and other items that can be harmful to the wheel

Part Number Swivel Caster	Part Number Rigid Caster	Wheel Diameter (inch)	Tread Width (inch)	Load Capacity (lbs)	Overall Height (inch)	Swivel Lead (inch)	Approx. Weight (lbs)
110PY0622880AS	110PY0622880AR	6	2	1025	6-1/2	1-3/8	6
110PY0822880AS	110PY0822880AR	8	2	1250	7-1/2	1-9/16	7
110PY1022880AS	110PY1022880AR	10	2	1400	10-1/8	2-1/4	9



NEOPRENE ON ALUMINUM 28 PRECISION BALL BEARING NP SHORE 60-70A

- Very high resilience and is impervious to metal chips and screws
- Performs well in contact with oils and chemicals and can be used over a wide temperature range
- Precision Ball Bearings
- Designed to handle heavy loads
- High chemical resistance

Part Number Swivel Caster	Part Number Rigid Caster	Wheel Diameter (inch)	Tread Width (inch)	Load Capacity (lbs)	Overall Height (inch)	Swivel Lead (inch)	Approx. Weight (lbs)
110NP05228S	110NP05228R	5	2	600	6-1/2	1-3/8	6
110NP06228S	110NP06228R	6	2	700	7-1/2	1-9/16	7
110NP08228S	110NP08228R	8	2	700	10-1/8	2-1/4	9



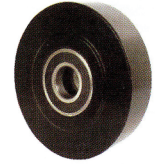
4 110 SERIES KINGPINLESS CASTERS

NY/MD WHEELS

NYLACRON™ WHEELS

- Precision Machined from Cast Polyamide. Hardness 112-120 Rockwell R
- Ultimate choice for Extremely High Load applications to replace metallic wheels
- Offer very high abrasion resistance and very low rolling resistance under extreme loads

- Resistant to salt, grease, alcohol and mild acids - can be used in corrosive applications with appropriate bearings
- Stainless Steel Precision Ball Bearings
- Temperature Range: -40°F to +270°F



Part Number Swivel Caster	Part Number Swivel with Total Lock	Part Number Rigid Caster	Wheel Diameter (inch)	Tread Width (inch)	Load Capacity (lbs)	Overall Height (inch)	Swivel Radius (inch)	Swivel Radius w/Total Lock (inch)	Swivel Radius w/Wheel Brake (inch)
11042SNYMD	11042SNYMDTL	11042RNYMD	4	2	2000	5-5/8	3-3/16	4	8-1/2
11052SNYMD	11052SNYMDTL	11052RNYMD	5	2	2000	6-1/2	3-7/8	4	9-1/2
11062SNYMD	11062SNYMDTL	11062RNYMD	6	2	2000	7-1/2	4-9/16	6	10
11082SNYMD	11082SNYMDTL	11082RNYMD	8	2	2000	9-1/2	6	6	11-1/2

NY/MC WHEELS

NYLACRON™ WHITE WHEELS

- Precision Machined from Cast Polyamide. Hardness 112-120 Rockwell R
- Ultimate choice for Extremely High Load applications to replace metallic wheels
- Offer very high abrasion resistance and very low rolling resistance under extreme loads

- Resistant to salt, grease, alcohol and mild acids - can be used in corrosive applications with appropriate bearings
- Stainless Steel Precision Ball Bearings
- Temperature Range: -40°F to +270°F



Part Number Swivel Caster	Part Number Swivel with Total Lock	Part Number Rigid Caster	Wheel Diameter (inch)	Tread Width (inch)	Load Capacity (lbs)	Overall Height (inch)	Swivel Radius (inch)	Swivel Radius w/Total Lock (inch)	Swivel Radius w/Wheel Brake (inch)
11042SNYMC	11042SNYMCTL	11042RNYMC	4	2	2000	5-5/8	3-3/16	4	8-1/2
11052SNYMC	11052SNYMCTL	11052RNYMC	5	2	2000	6-1/2	3-7/8	4	9-1/2
11062SNYMC	11062SNYMCTL	11062RNYMC	6	2	2000	7-1/2	4-9/16	6	10
11082SNYMC	11082SNYMCTL	11082RNYMC	8	2	2000	9-1/2	6	6	11-1/2

KR WHEELS

SOLID POLYURETHANE KRYPTONIC™ WHEELS

- Polyether Polyurethane has excellent carrying capacity.
- Crown shape affords an easy-rolling quiet operation
- Greater service life and resistance to chunking, cutting and abrasive wear

- 100% washable, steam cleanable, and resistant to most chemicals
- Non-marking tread
- Durometer: 58 Shore D (+/-5)
- Stainless Steel Precision Ball Bearings
- Available in 5" HI-temp gray + 250°F for 5 to 6 hrs. add: "G" after "KR". Example: Y582P1CR/KRG5



Part Number Swivel Caster	Part Number Swivel with Total Lock	Part Number Rigid Caster	Wheel Diameter (inch)	Tread Width (inch)	Load Capacity (lbs)	Overall Height (inch)	Swivel Radius (inch)	Swivel Radius w/Total Lock (inch)	Swivel Radius w/Wheel Brake (inch)
11042SKR	11042SKRTL	11042RKR	4	2	500	5-5/8	3-3/16	4	8-1/2
11052SKR	11052SKRTL	11052RKR	5	2	600	6-1/2	3-7/8	4	9-1/2
11062SKR	11062SKRTL	11062RKR	6	2	700	7-1/2	4-9/16	6	10
11082SKR	11082SKRTL	11082RKR	8	2	800	9-1/2	6	6	11-1/2

SWE 80A FLAT TREAD WHEELS RED

INTEGRATED TWIN WHEELS

- Reduces rolling resistance
- Minimizes initial start forces
- Prolongs the life of the swivel caster
- Eliminates the need for costly dual-wheel caster

- Carries 2x the load of standard size wheels with similar tread hardness
- Maintenance-free for longer life
- Non-marking, high-performance elastomer treads
- Patented SWE® Precision Ball Bearing Design
- Temp Range: -40°F to +180°F



Part Number Swivel Caster	Part Number Rigid Caster	Wheel Diameter (inch)	Tread Width (inch)	Load Capacity (lbs)	Overall Height (inch)	Swivel Radius (inch)	Swivel Radius w/Wheel Brake (inch)
11032SSWE80AFT	11032RSWE80AFT	3	2	560	5-1/16	3-3/16	8-1/2
11042SSWE80AFT	11042RSWE80AFT	4	2	700	5-5/8	3-3/16	8-1/2
11052SSWE80AFT	11052RSWE80AFT	5	2	1050	6-1/2	3-7/8	9-1/2
11062SSWE80AFT	11062RSWE80AFT	6	2	1400	7-1/2	4-9/16	10
11082SSWE80AFT	11082RSWE80AFT	8	2	1400	9-1/2	6	11-1/2

SWE 80A CROWN TREAD WHEELS RED

INTEGRATED TWIN WHEELS

- Reduces rolling resistance
- Minimizes initial start forces
- Prolongs the life of the swivel caster
- Eliminates the need for costly dual-wheel caster

- Carries 2x the load of standard size wheels with similar tread hardness
- Maintenance-free for longer life
- Non-marking, high-performance elastomer treads
- Patented SWE® Precision Ball Bearing Design
- Temp Range: -40°F to +180°F



Part Number Swivel Caster	Part Number Rigid Caster	Wheel Diameter (inch)	Tread Width (inch)	Load Capacity (lbs)	Overall Height (inch)	Swivel Radius (inch)	Swivel Radius w/Wheel Brake (inch)
11032SSWE80ACRN	11032RSWE80ACRN	3	2	320	5-1/16	3-3/16	8-1/2
11042SSWE80ACRN	11042RSWE80ACRN	4	2	400	5-5/8	3-3/16	8-1/2
11052SSWE80ACRN	11052RSWE80ACRN	5	2	650	6-1/2	3-7/8	9-1/2
11062SSWE80ACRN	11062RSWE80ACRN	6	2	900	7-1/2	4-9/16	10
11082SSWE80ACRN	11082RSWE80ACRN	8	2	1400	9-1/2	6	11-1/2

SWE 95A FLAT TREAD WHEELS BLUE

INTEGRATED TWIN WHEELS

- Reduces rolling resistance
- Minimizes initial start forces
- Prolongs the life of the swivel caster
- Eliminates the need for costly dual-wheel caster

- Carries 2x the load of standard size wheels with similar tread hardness
- Maintenance-free for longer life
- Non-marking, high-performance elastomer treads
- Patented SWE® Precision Ball Bearing Design
- Temp Range: -40°F to +180°F



Part Number Swivel Caster	Part Number Rigid Caster	Wheel Diameter (inch)	Tread Width (inch)	Load Capacity (lbs)	Overall Height (inch)	Swivel Radius (inch)	Swivel Radius w/Wheel Brake (inch)
11032SSWE95AFT	11032RSWE95AFT	3	2	720	5-1/16	3-3/16	8-1/2
11042SSWE95AFT	11042RSWE95AFT	4	2	900	5-5/8	3-3/16	8-1/2
11052SSWE95AFT	11052RSWE95AFT	5	2	1400	6-1/2	3-7/8	9-1/2
11062SSWE95AFT	11062RSWE95AFT	6	2	1400	7-1/2	4-9/16	10
11082SSWE95AFT	11082RSWE95AFT	8	2	1400	9-1/2	6	11-1/2

Also available in crown and flat tread 70A, 60D and 75D

4 110 SERIES KINGPINLESS CASTERS

SWE 95A CROWN TREAD WHEELS BLUE

INTEGRATED TWIN WHEELS

- Reduces rolling resistance
- Minimizes initial start forces
- Prolongs the life of the swivel caster
- Eliminates the need for costly dual-wheel caster

- Carries 2x the load of standard size wheels with similar tread hardness
- Maintenance-free for longer life
- Non-marking, high-performance elastomer treads
- Patented SWE® Precision Ball Bearing Design
- Temp Range: -40°F to +180°F



Part Number Swivel Caster	Part Number Rigid Caster	Wheel Diameter (inch)	Tread Width (inch)	Load Capacity (lbs)	Overall Height (inch)	Swivel Radius (inch)	Swivel Radius w/Wheel Brake (inch)
11032SSWE95ACRN	11032RSWE95ACRN	3	2	400	5-1/16	3-3/16	8-1/2
11042SSWE95ACRN	11042RSWE95ACRN	4	2	500	5-5/8	3-3/16	8-1/2
11052SSWE95ACRN	11052RSWE95ACRN	5	2	800	6-1/2	3-7/8	9-1/2
11062SSWE95ACRN	11062RSWE95ACRN	6	2	1100	7-1/2	4-9/16	10
11082SSWE95ACRN	11082RSWE95ACRN	8	2	1400	9-1/2	6	11-1/2

SWE 70A FLAT TREAD WHEELS BLACK

INTEGRATED TWIN WHEELS

- Reduces rolling resistance
- Minimizes initial start forces
- Prolongs the life of the swivel caster
- Eliminates the need for costly dual-wheel caster

- Carries 2x the load of standard size wheels with similar tread hardness
- Maintenance-free for longer life
- Non-marking, high-performance elastomer treads
- Patented SWE® Precision Ball Bearing Design
- Temp Range: -40°F to +180°F



Part Number Swivel Caster	Part Number Rigid Caster	Wheel Diameter (inch)	Tread Width (inch)	Load Capacity (lbs)	Overall Height (inch)	Swivel Radius (inch)	Swivel Radius w/Wheel Brake (inch)
11032SSWE70ACRN	11032RSWE70ACRN	3	2	800	5-1/16	3-3/16	8-1/2
11042SSWE70ACRN	11042RSWE70ACRN	4	2	1000	5-5/8	3-3/16	8-1/2
11052SSWE70ACRN	11052RSWE70ACRN	5	2	1400	6-1/2	3-7/8	9-1/2
11062SSWE70ACRN	11062RSWE70ACRN	6	2	1400	7-1/2	4-9/16	10
11082SSWE70ACRN	11082RSWE70ACRN	8	2	1400	9-1/2	6	11-1/2

SWE 70A CROWN TREAD WHEELS BLACK

INTEGRATED TWIN WHEELS

- Reduces rolling resistance
- Minimizes initial start forces
- Prolongs the life of the swivel caster
- Eliminates the need for costly dual-wheel caster

- Carries 2x the load of standard size wheels with similar tread hardness
- Maintenance-free for longer life
- Non-marking, high-performance elastomer treads
- Patented SWE® Precision Ball Bearing Design
- Temp Range: -40°F to +180°F



Part Number Swivel Caster	Part Number Rigid Caster	Wheel Diameter (inch)	Tread Width (inch)	Load Capacity (lbs)	Overall Height (inch)	Swivel Radius (inch)	Swivel Radius w/Wheel Brake (inch)
11032SSWE70ACRN	11032RSWE70ACRN	3	2	520	5-1/16	3-3/16	8-1/2
11042SSWE70ACRN	11042RSWE70ACRN	4	2	800	5-5/8	3-3/16	8-1/2
11052SSWE70ACRN	11052RSWE70ACRN	5	2	1060	6-1/2	3-7/8	9-1/2
11062SSWE70ACRN	11062RSWE70ACRN	6	2	1300	7-1/2	4-9/16	10
11082SSWE70ACRN	11082RSWE70ACRN	8	2	1400	9-1/2	6	11-1/2

*When ordering, note durometer after the part number (ex: SWE-320-FT-60D)
Also available in crown and flat tread 70A, 60D and 75D