

Caster Type

Page

700 Kingpinless Casters.....2-5

850 Dual Wheel Kingpinless Casters.....6-7

ALL WHEELS ARE AVAILABLE WITH
PRECISION BALL BEARING, CENTERPIECE & END CAPS
FOR MANUAL OR TOWING TO FIT IN 3-1/2" HUB LENGTH RIGS.
See Wheel Section for complete selection.

9 700 KINGPINLESS CASTERS



20,000 LBS. LOAD CAPACITY KINGPINLESS TYPE CASTERS

- **Top Plate:** 1/2" thick AISI 1045 steel one-piece forging precision machined for longer life.
- **Swivel Section:** 3/4" ball bearings mounted in a 7" diameter precision machined raceway. Zerk in swivel section.
- **Legs:** 1/2" thick steel welded to yoke base using 100,000 psi weld filler.
- **Axle:** 1-1/4" diameter.
- Alternate or custom caster configurations available.

BRAKE OPTIONS



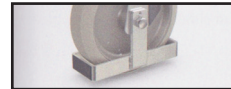
Poly Cam
specify P



Face Contact
specify F



Hand Operated Swivel Lock
specify SL7000000



TOE GUARDS AVAILABLE TO

These super duty casters are built specifically for that severe application where reliability is essential.

TOP PLATE: (STANDARD)

Plate Size: 8-1/2" x 8-1/2"

Bolt Size: 5/8"

TYPICAL APPLICATIONS

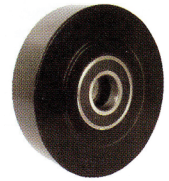
- Aircraft engine stands
- Ground support equipment
- Aerospace A-frame skin dollies
- Portable jigs
- Tooling fixtures
- Die carts
- Large platform work

9 700 KINGPINLESS CASTERS

NYLACRON™ WHEELS PRECISION BALL BEARINGS NY/MD

- Precision Machined from Cast Polyamide. Hardness 112-120 Rockwell R.
- Ultimate choice for Extremely High Load applications to replace metallic wheels.
- Offer very high abrasion resistance and very low rolling resistance under extreme loads.

- Resistant to salt, grease, alcohol and mild acids - can be used in corrosive applications with appropriate bearings.
- Large Precision Ball Bearings.
- Temperature Range: -40°F to +270°F.

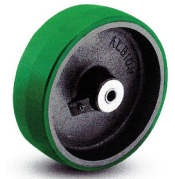


Part Number Swivel Caster	Part Number Rigid Caster	Wheel Diameter (inch)	Tread Width (inch)	Load Capacity (lbs)	Overall Height (inch)	Swivel Lead (inch)
700NYMD08728	700NYMD08728R	8	4	10,000	10-1/2	2-15/16
700NYMD10728	700NYMD10728R	10	4	12,000	12-1/2	3-3/8
700NYMD10828	700NYMD10828R	10	5	12,000	13	2-1/2
700NYMD12728	700NYMD12728R	12	4	14,000	15-1/2	3-1/4
700NYMD12828	700NYMD12828R	12	5	18,000	15-1/2	3-1/4

POLYURETHANE ON CAST IRON ROLLER BEARING PY

- Tapered or Straight Roller Bearing available add T or R to suffix.

- See wheel section for additional durometers.



Part Number Swivel Caster	Part Number Rigid Caster	Wheel Diameter (inch)	Tread Width (inch)	Load Capacity (lbs)	Overall Height (inch)	Swivel Lead (inch)
700PY08709	700PY08709R	8	4	3500	11	2-1/4
700PY10709	700PY10709R	10	4	4200	13	2-1/2
700PY10809	700PY10809R	10	5	5000	13	2-1/2
700PY12709	700PY12709R	12	4	4800	15-1/2	3-1/4
700PY12809	700PY12809R	12	5	6000	15-1/2	3-1/4
700PY16709	700PY16709R	16	4	5970	19	4-1/2
700PY16809	700PY16809R	16	5	7700	19	4-1/2

THICK TREAD POLYURETHANE ROLLER BEARING PX

- Tapered or Straight Roller Bearing available add T or R to suffix.

- See wheel section for additional durometers.



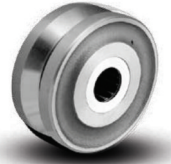
Part Number Swivel Caster	Part Number Rigid Caster	Wheel Diameter (inch)	Tread Width (inch)	Load Capacity (lbs)	Overall Height (inch)	Swivel Lead (inch)
700PX08709	700PX08709R	8	4	3850	11	2-1/4
700PX10709	700PX10709R	10	4	4620	13	2-1/2
700PX10809	700PX10809R	10	5	5500	13	2-1/2
700PX12709	700PX12709R	12	4	5820	15-1/2	3-1/4
700PX12809	700PX12809R	12	5	6600	15-1/2	3-1/4
700PX16709	700PX16709R	16	4	6570	19	4-1/2
700PX16809	700PX16809R	16	5	8470	19	4-1/2

9 700 KINGPINLESS CASTERS

V-GROOVED DROP FORGED ROLLER BEARING TAPERED ROLLER BEARING

VF

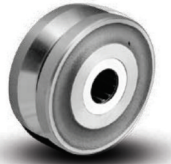
Part Number Swivel Caster	Part Number Rigid Caster	Wheel Diameter (inch)	Tread Width (inch)	Load Capacity (lbs)	Overall Height (inch)	Swivel Lead (inch)
700VF08709	700VF08709R	8	4	10,000	11	2-1/4
700VF10709	700VF10709R	10	4	8350	13	2-1/2



V-GROOVED HEAVY DUTY DROP FORGED STEEL ROLLER BEARING

VH

Part Number Swivel Caster	Part Number Rigid Caster	Wheel Diameter (inch)	Tread Width (inch)	Load Capacity (lbs)	Overall Height (inch)	Swivel Lead (inch)
700VH08709	700VH08709R	8	4	15,000	11	2-1/4
700VH10709	700VH10709R	10	4	15,000	13	2-1/2



DROP FORGED STEEL ROLLER BEARING

FS

• Tapered (09)

Part Number Swivel Caster	Part Number Rigid Caster	Wheel Diameter (inch)	Tread Width (inch)	Load Capacity (lbs)	Overall Height (inch)	Swivel Lead (inch)
700FS08709	700FS08709R	8	4	10,000	11	2-1/4
700FS10709	700FS10709R	10	4	10,000	13	2-1/2



HEAVY DUTY LARGE BORE DROP FORGED STEEL ROLLER BEARING

FH

• Tapered (09)

Part Number Swivel Caster	Part Number Rigid Caster	Wheel Diameter (inch)	Tread Width (inch)	Load Capacity (lbs)	Overall Height (inch)	Swivel Lead (inch)
700FH08709	700FH08709R	8	4	20,000	11	2-1/4
700FH10709	700FH10709R	10	4	20,000	13	2-1/2



SEE WHEEL SECTION FOR OTHER WHEELS AVAILABLE



9 850 DUAL WHEEL KINGPINLESS CASTERS



20,000 LBS. LOAD CAPACITY KINGPINLESS TYPE CASTERS

- **Raceway Design:** Patented Kingpinless single ball bearing precision machined raceway hardened to 53 Rockwell C minimum. Swivel section features a 3" diameter raceway with 1/2" ball bearings. The notched yoke is standard.
- **Finish:** Laguna Blue paint.
- **Yoke Base:** Harden C1040 steel.
- **Legs:** 3/8" formed steel. Center leg support is added for increased strength.
- **Wheels:** All wheels are 3 and 4" wide with precision bearings for minimal maintenance.
- **Axle:** 3/4" and 1" bolt, locking nut and lubrication fittings.
- Alternate or custom caster configurations available.

BRAKE OPTIONS

CWB Cam Wheel Brake

SWIVEL RIG OPTIONS

HT High Temperature Lubrication

LT Low Temperature Lubrication

DSL Demountable Swivel Lock

SL Swivel Lock

SR Sealed Swivel Raceway

TG Thread Guard

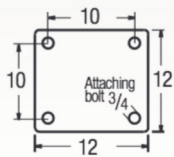
TYPICAL APPLICATIONS

- Custom applications
- Towable transportation equipment
- Aircraft wing jack and dollies
- Aircraft assembly fixtures
- Aircraft work platform stands

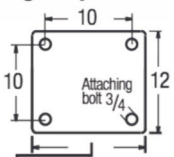
To order a rigid caster, change the "S" to "R" in the model number. Dimensions shown are nominal. If precise dimensions are required, consult Acorn™. For approximate weight of our rigid casters, deduct 3.9 pounds.

MOUNTING OPTION

Swivel Top Plate



Rigid Top Plate



- 10" for 3" Wide Wheels
- 15-3/8" for 4 to 5" Wide Wheels
- 17-1/4" for 6" Wide Wheels
- 23-1/4" for 9" Wide Wheels

SWIVEL CROSS SECTION



TOP PLATE: (STANDARD)

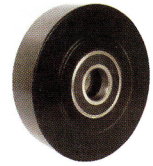
Plate Size: 6-1/4" x 7-1/2"

Bolt Holes: 4-1/2" x 6"
slotted to
4-1/8" x 6-1/8"

Bolt Size: 1/2"

**NYLACRON™ WHEELS
PRECISION BALL BEARINGS
NY/MD**

- Precision Machined from Cast Polyamide. Hardness 112-120 Rockwell R.
- Ultimate choice for Extremely High Load applications to replace metallic wheels.
- Offer very high abrasion resistance and very low rolling resistance under extreme loads.
- Resistant to salt, grease, alcohol and mild acids - can be used in corrosive applications with appropriate bearings.
- Large Precision Ball Bearings.
- Temperature Range: -40°F to +270°F.



Part Number Swivel Caster	Part Number Rigid Caster	Wheel Diameter (inch)	Tread Width (inch)	Load Capacity (lbs)	Overall Height (inch)	Swivel Part Number Add B, P, PL, R or T*	
						Swivel Lead (inch)	Wt. (lbs)
850S63NYMD	850R63NYMD	6	3	20,000	8-3/4	1-9/16	32
850S83NYMD	850R83NYMD	8	3	20,000	10-3/4	2-1/16	35
850S1030NYMD	850R1030NYMD	10	3	20,000	12-3/4	2-9/16	40
850S1230NYMD	850R1230NYMD	12	3	20,000	15-1/2	3-7/16	42
850S84NYMD	850R84NYMD	8	4	20,000	10-3/4	2-1/16	42
850S1040NYMD	850R1040NYMD	10	4	20,000	12-3/4	2-9/16	44
850S1020NYMD	850R1020NYMD	12	4	20,000	15-1/2	3-7/16	52



Nylacron™ Wheels

With Precision Ball Bearings for Any Application
(also available in black, blue, white & red)

Nylacron™ wheels with proper sized precision bearings are made to fit in any rig hub length and axle size. Nylacron™ wheels have greater load capacity ratings with better rollability while requiring less maintenance and have longer life.

**SEE NYLACRON™ WHEEL SECTION
FOR CUSTOM SIZES & SHAPES.**