

HIGH TEMP LAVA™ WHEELS

600-3500 LBS.



LAVA™



LAVA™(LVW)



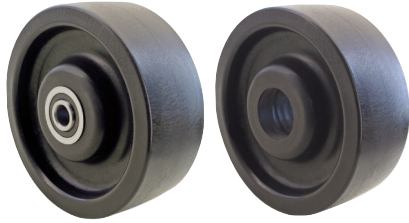
LAVA™(LVW)



LAVA™(LVW)



LAVA™(LVW)



Features

Bearings: Plain, ball, roller bearing & caged roller bearing
Temperature: -45°F to 475°F continuously, 525°F intermittently
Colors: Black
Durometer: 85 (+/-5) scale

Description: This non-marking wheel features an exclusively developed proprietary nylon material which is excellent for high load capacities. The Lava™ wheel is extremely ergonomically efficient, as it requires minimum effort to roll and swivel with heavy loads. Lava™ wheel resists hard impacts and is resistant to most chemicals, solvents, gases, acids, steam cleaning and does not absorb water! This wheel is ideal for industrial and institutional applications.

Excellent for:

- Floor protection
- Factory use
- Waste bins
- Platform and stock trucks
- High temperature applications
- Heavy material handling
- Easy rolling
- Heavy loads
- Bakery applications

Options:

BB	Ball Bearing
BR	Bronze Bushing
RB	Roller Bearing
RBC	Caged Roller Bearing
RBSS	Stainless Steel Roller
SWH	Heat-treated Side Washer
T	Through Bore (2" wheel tread)

Special:

- Resistant to most chemicals
- Non-marking
- Moisture friendly
- Maintenance free
- One piece solid Lava™
- Same capacity as steel wheels

Wheel Dia. (inch)	Tread Width (inch)	Load Capacity (lbs.)	Hub Length (inch)	Standard Bore (inch)	Alternative Bore (inch)	Bearing Type	Part Number	Wheel Weight (lbs.)
3	1-1/2	600	1-5/8	3/8	5/16	Steel	W-6203-LV	0.50
3	1-1/2	600	1-5/8	1-13/16	1/2 • 5/8	Plain	W-6203-LV	0.42
3	1-1/2	600	1-13/16	1/2	3/8 • 5/8 • 3/4	Roller	W-6203-LV-RB	0.82
4	1-1/2	700	1-5/8	3/8	5/16	Steel	W-6204-LV	0.73
4	1-1/2	700	1-5/8	1-13/16	1/2 • 5/8	Plain	W-6204-LV	0.71
4	1-1/2	700	1-13/16	1/2	3/8 • 5/8 • 3/4	Roller	W-6204-LV-RB	1.11
4	2	800	2-3/16	1-13/16	-	Plain	W-7204-LV*	0.63
4	2	800	2-3/8	1/2	5/8 • 3/4	Roller	W-7204-LV-RB	1.12
5	1-1/2	800	1-5/8	3/8	5/16	Steel	W-6205-LV	1.05
5	1-1/2	800	1-5/8	1-13/16	1/2 • 5/8	Plain	W-6205-LV	0.97
5	1-1/2	800	1-13/16	1/2	3/8 • 5/8 • 3/4	Roller	W-6205-LV-RB	1.37
5	2	800	2-3/16	1-13/16	-	Plain	W-7005-LV*	0.84
5	2	800	2-3/8	1/2	5/8 • 3/4	Roller	W-7005-LV-RB	1.33
5	2	1100	2-3/16	1-13/16	-	Plain	W-7005-LVHD*	1.16
5	2	1100	2-3/8	1/2	5/8 • 3/4	Roller	W-7005-LVHD-RB	1.65
6	2	1100	2-3/16	1-13/16	-	Plain	W-7006-LV*	1.06
6	2	1100	2-3/8	1/2	5/8 • 3/4	Roller	W-7006-LV-RB	1.55
6	2	1200	2-3/16	1-13/16	-	Plain	W-7006-LVW*	1.64
6	2	1200	2-3/8	1/2	5/8 • 3/4	Roller	W-7006-LVHD-RB	2.13
6	2	1300	2-3/16	1-13/16	-	Plain	W-7006-LVHD*	1.57
6	2	1300	2-3/8	1/2	5/8 • 3/4	Roller	W-7006-LVHD-RB	2.06
8	2	1200	2-3/16	1-13/16	-	Plain	W-7008-LV*	1.84
8	2	1200	2-3/8	1/2	5/8 • 3/4	Roller	W-7008-LV-RB	2.33
8	2	1300	2-3/16	1-13/16	-	Plain	W-7008-LVW*	2.25
8	2	1300	2-3/8	1/2	5/8 • 3/4	Roller	W-7008-LVW-RB	2.69
8	3	2100	3-1/4	1-15/16	-	Plain	W-7508-LVW	4.25
8	3	2100	3-7/16	3/4	1 • 1-1/4	Roller	W-7508-LVW-RB	6.14
8	3	2100	3-1/4	3/4	1 • 1-1/4	Tapered	W-7508-LVW-TB	4.81
10	2-1/2	2100	2-3/4	1-15/16	-	Plain	W-7110-LVW	4.58
10	2-1/2	2100	2-27/32	3/4	1 • 1-1/4	Roller	W-7110-LVW-RB	6.23
10	3	2800	3-1/4	1-15/16	-	Plain	W-7510-LVW	6.45
10	3	2800	3-7/16	3/4	1 • 1-1/4	Roller	W-7510-LVW-RB	8.34
10	3	2800	3-1/4	3/4	1 • 1-1/4	Tapered	W-7510-LVW-TB	7.01
12	3	3500	3-1/4	1-15/16	-	Plain	W-7512-LVW	9.87
12	3	3500	3-7/16	3/4	1 • 1-1/4	Roller	W-7512-LVW-RB	11.76
12	3	3500	3-1/4	3/4	1 • 1-1/4	Tapered	W-7512-LVW-TB	10.43

*wheel has one closed side to eliminate washer and for easier assembly