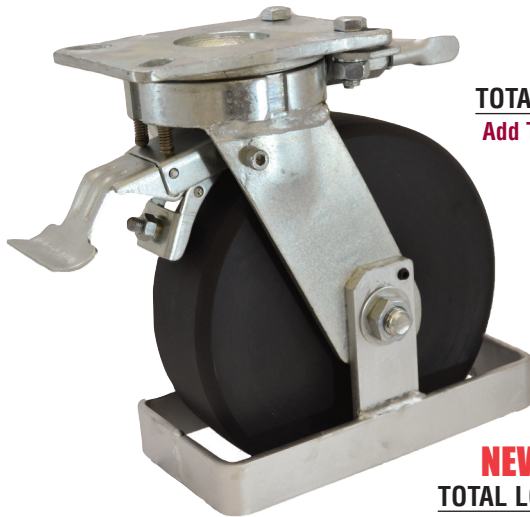


GAD TOTAL LOCK KINGPINLESS SERIES CASTERS



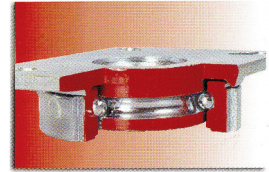
LEADING SIDE TOTAL LOCK SWIVEL CASTER

Add TL to swivel caster number

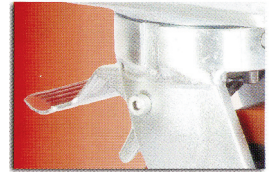
Available Toe Guard
TO

NEW TRAILING SIDE TOTAL LOCK SWIVEL CASTER

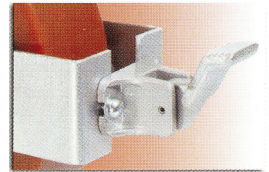
No need to move cots back and forth
for finding the brake pedal.
Add TLN to swivel caster number



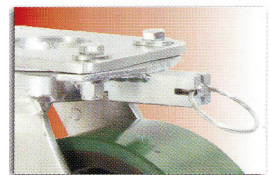
Swivel Head Section



Total Lock System



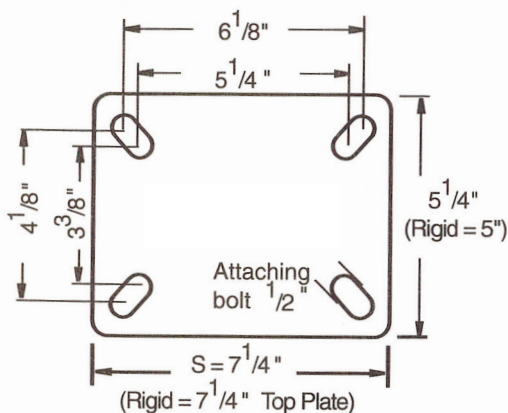
Wheel Face Brake



Directional Lock

5,000 LBS. LOAD CAPACITY FORGED KINGPINLESS TYPE CASTERS

- Single piece Drop Forged AISI 1045 Steel Top Plate and Fork Base.
- Precision CNC Machined Raceways with 3-1/2" diameter with 1/2" ball bearings.
- Induction Hardening of Raceways ensures uniform depth of hardness.
- Totally Sealed Swivel Head with Grease Nipple.
- 3/8" Thick x 3" wide Fork Legs Robotically welded Inside & Outside to 3 1/2" fork spacing.
- 3/4" Wheel axle.
- 4 Position Directional Lock Slots.
- Finish: Bright Zinc Plated.



TOP PLATE
5-1/4 X 7-1/4

BOLT HOLE CENTER
3-3/8 X 5-1/4
SLOTTED TO
4-1/8 X 6-1/8

ATTACHING BOLT SIZE
1/2

RIG OPTIONS
DL: 4-WAY DIRECTIONAL LOCK

WFB: WHEEL FACE BRAKE
ADD TO SUFFIX
OF THE CASTER PART NUMBER

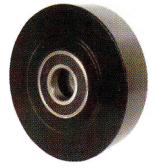
TOE GUARDS
SPECIFY "TO"
WITH CASTER NUMBER

NY/MD WHEELS

NYLACRON™ WHEELS

- Precision Machined from Cast Polyamide Hardness 112-120 Rockwell R.
- Ultimate choice for Extremely High Load applications to replace metallic wheels.
- Offer very high abrasion resistance and very low rolling resistance under extreme loads.

- Resistant to salt, grease, alcohol and mild acids - can be used in corrosive applications with appropriate bearings.
- Precision Ball Bearings.
- Temperature Range: -40°F to +270°F.



| Part Number Swivel Caster | Part Number Swivel with Total Lock | Part Number Rigid Caster | Wheel Diameter (inch) | Tread Width (inch) | Load Capacity (lbs) | Overall Height (inch) | Swivel Radius (inch) | Swivel Radius w/Total Lock (inch) | Swivel Radius w/Wheel Brake (inch) |
|---------------------------|------------------------------------|--------------------------|-----------------------|--------------------|---------------------|-----------------------|----------------------|-----------------------------------|------------------------------------|
| GADS63NYMD | GADTL63NYMD | GADR63NYMD | 6 | 3 | 5000 | 8 | 5-1/8 | 6 | 10-1/8 |
| GADS83NYMD | GADTL83NYMD | GADR83NYMD | 8 | 3 | 5000 | 10-1/2 | 6-1/2 | 6-1/4 | 11-1/4 |
| GADS103NYMD | GADTL103NYMD | GADR103NYMD | 10 | 3 | 5000 | 12-1/2 | 7-3/4 | 7-3/4 | 12-3/4 |
| GADS123NYMD | GADTL123NYMD | GADR123NYMD | 12 | 3 | 5000 | 15-1/2 | 8-3/8 | 8-3/8 | 13-3/8 |

NY/MC WHEELS

NYLACRON™ WHITE WHEELS

- Precision Machined from Cast Polyamide Hardness 112-120 Rockwell R.
- Ultimate choice for Extremely High Load applications to replace metallic wheels.
- Offer very high abrasion resistance and very low rolling resistance under extreme loads.

- Resistant to salt, grease, alcohol and mild acids - can be used in corrosive applications with appropriate bearings.
- Precision Ball Bearings.
- Temperature Range: -40°F to +270°F.



| Part Number Swivel Caster | Part Number Swivel with Total Lock | Part Number Rigid Caster | Wheel Diameter (inch) | Tread Width (inch) | Load Capacity (lbs) | Overall Height (inch) | Swivel Radius (inch) | Swivel Radius w/Total Lock (inch) | Swivel Radius w/Wheel Brake (inch) |
|---------------------------|------------------------------------|--------------------------|-----------------------|--------------------|---------------------|-----------------------|----------------------|-----------------------------------|------------------------------------|
| GADS63NYMC | GADTL63NYMC | GADR63NYMC | 6 | 3 | 5000 | 8 | 5-1/8 | 6 | 10-1/8 |
| GADS83NYMC | GADTL83NYMC | GADR83NYMC | 8 | 3 | 5000 | 10-1/2 | 6-1/2 | 6-1/4 | 11-1/4 |
| GADS103NYMC | GADTL103NYMC | GADR103NYMC | 10 | 3 | 5000 | 12-1/2 | 7-3/4 | 7-3/4 | 12-3/4 |
| GADS123NYMC | GADTL123NYMC | GADR123NYMC | 12 | 3 | 5000 | 15-1/2 | 8-3/8 | 8-3/8 | 13-3/8 |

VX WHEELS

VULKOLLAN™ THICK TREAD WHEELS

Highest Quality Polyurethane in the World

Extremely Durable

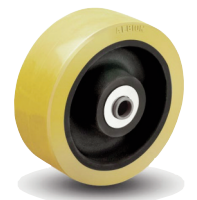
High Load Capacity

Ergonomic - Easy to Roll

High Abrasion Resistance

FEATURES

- Thickness: 1" thick polyurethane
- Wheel Face: Flat
- Finish: Orange/Brown tread on cast iron core
- Hardness: 95 Shore A
- Temperature Range: -40°F to +180°F



WHEEL OPTIONS

- Select bearing featured are recommended for standard applications. For special applications or alternate bearings consult Acorn.

| Part Number Precision Ball | Wheel Diameter (inch) | Tread Width (inch) | Load Capacity (lbs) | Overall Height (inch) | Swivel Radius (inch) | Swivel Radius w/Total Lock (inch) | Swivel Radius w/Wheel Brake (inch) |
|----------------------------|-----------------------|--------------------|---------------------|-----------------------|----------------------|-----------------------------------|------------------------------------|
| GADVX0522808 | 6 | 3 | 3000 | 8 | 5-1/8 | 6 | 10-1/8 |
| GADVX0622808 | 8 | 3 | 4000 | 10-1/2 | 6-1/4 | 6-1/4 | 11-1/4 |
| GADVX0822808 | 10 | 3 | 5000 | 12-1/2 | 7-3/4 | 7-3/4 | 12-3/4 |

MEGALOAD™ AND VULKOLLAN™ WHEELS WITH PRECISION BALL BEARINGS AVAILABLE TO FIT THIS CASTER SERIES. SIZES 6 X 3, 8 X 3, 10 X 3 & 12 X 3.

SAS WHEELS

HIGH CAPACITY POLYURETHANE TREAD WHEELS CAST IRON CORE

- Polyurethane firmly bonded to Precision Machined Cast Iron Core
- 93+ 3 Shore A
- Low rolling resistance, smooth and noiseless running

- Non-marking and floor protective
- High abrasion, cut and tear resistant
- Precision Ball Bearings
- Temperature Range: -40°F to +180°F
- Available in Anti-Static add "AS" after wheel



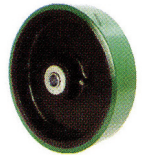
| Part Number Swivel Caster | Part Number Swivel with Total Lock | Part Number Rigid Caster | Wheel Diameter (inch) | Tread Width (inch) | Load Capacity (lbs) | Overall Height (inch) | Swivel Radius (inch) | Swivel Radius w/Total Lock (inch) | Swivel Radius w/Wheel Brake (inch) |
|---------------------------|------------------------------------|--------------------------|-----------------------|--------------------|---------------------|-----------------------|----------------------|-----------------------------------|------------------------------------|
| GAD63SSAS | GAD63SSASTL | GAD63RSAS | 6 | 3 | 2300 | 8 | 5-1/8 | 6 | 10-1/8 |
| GAD83SSAS | GAD83SSASTL | GAD83RSAS | 8 | 3 | 3100 | 10-1/2 | 6-1/4 | 6-1/4 | 11-1/4 |
| GAD103SSAS | GAD103SSASTL | GAD103RSAS | 10 | 3 | 4000 | 12-1/2 | 7-3/4 | 7-3/4 | 12-3/4 |
| GAD123SSAS | GAD123SSASTL | GAD123RSAS | 12 | 3 | 4850 | 15-1/2 | 8-3-8 | 8-3-8 | 13-3/8 |

SJS WHEELS

POLYURETHANE WHEELS

- Polyurethane tread wheels firmly bonded to Precision Machined Cast Iron Core.
- 93 + 3 Shore A.
- Low rolling resistance; Smooth and noiseless running.
- Non-marking and floor protective.

- Good Abrasion and cut resistance.
- Ideal for medium duty applications.
- Precision Ball Bearings.
- Temperature Range: -40°F to +180°F.
- Available in Anti-Static add "AS" after wheel.



| Part Number Swivel Caster | Part Number Swivel with Total Lock | Part Number Rigid Caster | Wheel Diameter (inch) | Tread Width (inch) | Load Capacity (lbs) | Overall Height (inch) | Swivel Radius (inch) | Swivel Radius w/Total Lock (inch) | Swivel Radius w/Wheel Brake (inch) |
|---------------------------|------------------------------------|--------------------------|-----------------------|--------------------|---------------------|-----------------------|----------------------|-----------------------------------|------------------------------------|
| GAD63SSJS | GAD63SSJSTL | GAD63RSJS | 6 | 3 | 2100 | 8 | 5-1/8 | 6 | 10-1/8 |
| GAD83SSJS | GAD83SSJSTL | GAD83RSJS | 8 | 3 | 2500 | 10-1/2 | 6-1/4 | 6-1/4 | 11-1/4 |
| GAD103SSJS | GAD103SSJSTL | GAD103RSJS | 10 | 3 | 3000 | 12-1/2 | 7-3/4 | 7-3/4 | 12-3/4 |
| GAD123SSJS | GAD123SSJSTL | GAD123RSJS | 12 | 3 | 3500 | 15-1/2 | 8-3-8 | 8-3-8 | 13-3/8 |

ME WHEELS

ERGONOMIC POLYURETHANE DONUT TREAD WHEELS CAST IRON CORE

- For Low Push-Pull Efforts.
- Polyurethane firmly bonded to Precision Machined Cast Iron Core.
- Red Tread 93+ 3 Shore A.
- Non-marking and floor protective.

- Tread Options:
Softer 80A - Yellow Tread (specify ME-Z)
Harder 73D - Blue Tread (specify ME-F).
- Precision Ball Bearings.
- Temperature Range: -40°F to +180°F.
- Available in Anti-Static add "AS" after wheel.



| Part Number Swivel Caster | Part Number Swivel with Total Lock | Part Number Rigid Caster | Wheel Diameter (inch) | Tread Width (inch) | Load Capacity (lbs) | Overall Height (inch) | Swivel Radius (inch) | Swivel Radius w/Total Lock (inch) | Swivel Radius w/Wheel Brake (inch) |
|---------------------------|------------------------------------|--------------------------|-----------------------|--------------------|---------------------|-----------------------|----------------------|-----------------------------------|------------------------------------|
| GAD63SME | GAD63SMETL | GAD63RME | 6 | 3 | 1850 | 8 | 5-1/8 | 6 | 10-1/8 |
| GAD83SME | GAD83SMETL | GAD83RMES | 8 | 3 | 2400 | 10-1/2 | 6-1/4 | 6-1/4 | 11-1/4 |
| GAD103SME | GAD103SMETL | GAD103RME | 10 | 3 | 2850 | 12-1/2 | 7-3/4 | 7-3/4 | 12-3/4 |
| GAD123SME | GAD123SMETL | GAD123RME | 12 | 3 | 3500 | 15-1/2 | 8-3-8 | 8-3-8 | 13-3/8 |