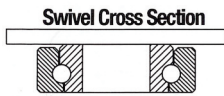


7 410 KINGPINLESS CASTERS



4,100 LBS. LOAD CAPACITY KINGPINLESS TYPE CASTERS

- **Top Plate:** 3/8" AISI 1045 heat treated steel welded inside and out for longer life.
- **Swivel Section:** One row of 1/2" ball bearings mounted in a heat treated precision machined raceway. Zerk in swivel section.
- **Yoke Base:** Notched AISI 1045 steel.
- **Legs:** 3/8" thick welded inside and out.
- **Axle:** 3/4" diameter.
- **Finish:** RoHS Zinc plating, for greater corrosion resistance than paint.



**TOE GUARDS
AVAILABLE WITH
ALL CASTERS.**

MOUNTING PLATE OPTIONS

TOP PLATE: (STANDARD)

- **Plate Size:** 4-1/2" x 6-1/4"
- **Bolt Holes:** 2-7/16" x 4-15/16"
slotted to
3-3/8" x 5-1/4"
- **Bolt Size:** 1/2"

Nylacron™ Wheels

With Precision Ball Bearings for Any Application

Nylacron™ wheels with proper sized precision bearings are made to fit in any rig hub length and axle size. Nylacron™ wheels have greater load capacity ratings with better rollability while requiring less maintenance and have a longer life.

**SEE NYLACRON™ WHEEL SECTION
FOR CUSTOM SIZES & SHAPES.**

BRAKES OPTIONS



Poly Cam
specify P



PLB Integrated
specify PLB



Single Sided specify SSB310
Double Sided specify DSB310



Face Contact
specify FBB



**Hand Operated
Swivel Lock**
specify SL3000000

TYPICAL APPLICATIONS

- Conveyor-drawn tow-trucks
- Heavy duty bakery racks
- Production dollies
- Heavy duty dough troughs

WHEEL BEARING OPTIONS

- Straight Roller (01)
- Tapered Roller (09)
- Precision Ball (28)

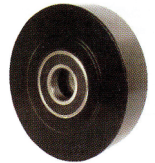
7 410 KINGPINLESS CASTERS

NY/MD WHEELS

NYLACRON™ WHEELS

- Precision Machined from Cast Polyamide Hardness 112-120 Rockwell R.
- Ultimate choice for Extremely High Load applications to replace metallic wheels.
- Offer very high abrasion resistance and very low rolling resistance under extreme loads.

- Resistant to salt, grease, alcohol and mild acids - can be used in corrosive applications with appropriate bearings.
- Precision Ball Bearings.
- Temperature Range: -40°F to +270°F.



Part Number Swivel Caster	Part Number Rigid Caster	Wheel Diameter (inch)	Tread Width (inch)	Load Capacity (lbs)	Overall Height (inch)	Swivel Radius (inch)	Swivel Radius w/Total Lock (inch)	Swivel Radius w/Wheel Brake (inch)
410S63NYMD	410R63NYMD	6	3	4100	7-1/2	5-1/2	6	10-1/2
410S83NYMD	410R83NYMD	8	3	4100	10-1/8	6-1/2	6-1/2	11-1/2
410S103NYMD	410R103NYMD	10	3	4100	11-1/2	7-3/4	7-3/4	12-3/4
410S123NYMD	410R123NYMD	12	3	4100	13-1/2	9-1/4"	9-1/4	14-1/4

NY/MC WHEELS

NYLACRON™ WHITE WHEELS

- Precision Machined from Cast Polyamide Hardness 112-120 Rockwell R.
- Ultimate choice for Extremely High Load applications to replace metallic wheels.
- Offer very high abrasion resistance and very low rolling resistance under extreme loads.

- Resistant to salt, grease, alcohol and mild acids - can be used in corrosive applications with appropriate bearings.
- Precision Ball Bearings.
- Temperature Range: -40°F to +270°F.



Part Number Swivel Caster	Part Number Rigid Caster	Wheel Diameter (inch)	Tread Width (inch)	Load Capacity (lbs)	Overall Height (inch)	Swivel Radius (inch)	Swivel Radius w/Total Lock (inch)	Swivel Radius w/Wheel Brake (inch)
410S63NYMC	410R63NYMC	6	3	4100	7-1/2	5-1/2	6	10-1/2
410S83NYMC	410R83NYMC	8	3	4100	10-1/8	6-1/2	6-1/2	11-1/2
410S103NYMC	410R103NYMC	10	3	4100	11-1/2	7-3/4	7-3/4	12-3/4
410S123NYMC	410R123NYMC	12	3	4100	13-1/2	9-1/4	9-1/4	14-1/4

DF WHEELS

DROP FORGED STEEL WHEELS

- AISI 1045 steel with machined tread faces.
- Virtually indestructible and easy to maneuver.
- High abrasion and oil resistant.

- Can be use in the roughest of applications on the poorest of floors.
- Precision Ball Bearings.
- Temperature Range: -150°F to +800°F.



Part Number Swivel Caster	Part Number Rigid Caster	Wheel Diameter (inch)	Tread Width (inch)	Load Capacity (lbs)	Overall Height (inch)	Swivel Radius (inch)	Swivel Radius w/Total Lock (inch)	Swivel Radius w/Wheel Brake (inch)
410S63DF	410R63DF	6	3	4000	7-1/2	5-1/2	6	10-1/2
410S83DF	410R83DF	8	3	4000	10-1/8	6-1/2	6-1/2	11-1/2
410S103DF	410R103DF	10	3	4000	11-1/2	7-3/4	7-3/4	12-3/4
410S123DF	410R123DF	12	3	4000	13-1/2	9-1/4"	9-1/4	14-1/4

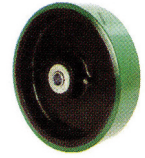
7 410 KINGPINLESS CASTERS

SJS WHEELS

POLYURETHANE WHEELS

- Polyurethane tread wheels firmly bonded to Precision Machined Cast Iron Core.
- 93 + 3 Shore A.
- Low rolling resistance; Smooth and noiseless running.
- Non-marking and floor protective.

- Good Abrasion and cut resistance.
- Ideal for medium duty applications.
- Precision Ball Bearings.
- Temperature Range: -40°F to +180°F.
- Available in Anti-Static add "AS" after wheel.

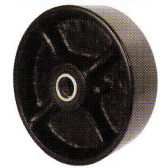


Part Number Swivel Caster	Part Number Rigid Caster	Wheel Diameter (inch)	Tread Width (inch)	Load Capacity (lbs)	Overall Height (inch)	Swivel Radius (inch)	Swivel Radius w/Total Lock (inch)	Swivel Radius w/Wheel Brake (inch)
410S63SJS	410R63SJS	6	3	2100	7-1/2	5-1/2	6	10-1/2
410S83SJS	410R83SJS	8	3	2500	10-1/8	6-1/2	6-1/2	11-1/2
410S103SJS	410R103SJS	10	3	3000	11-1/2	7-3/4	7-3/4	12-3/4
410S123SJS	410R123SJS	12	3	3500	13-1/2	9-1/4	9-1/4	14-1/4

MDW WHEELS

DUCTILE CAST STEEL WHEELS

- Machined tread face.
- Crown tread Face makes maneuverability easy.
- Higher Load Capacities compared to Cast Iron Wheels.
- Suitable for extra heavy loads towed in punishing conditions.
- High abrasion and oil resistance.
- Precision Ball Bearings.
- Temperature Range: 800°F.



Part Number Swivel Caster	Part Number Rigid Caster	Wheel Diameter (inch)	Tread Width (inch)	Load Capacity (lbs)	Overall Height (inch)	Swivel Radius (inch)	Swivel Radius w/Total Lock (inch)	Swivel Radius w/Wheel Brake (inch)
410S63MDW	410R63MDW	6	3	3300	7-1/2	5-1/2	6	10-1/2
410S83MDW	410R83MDW	8	3	4000	10-1/8	6-1/2	6-1/2	11-1/2
410S103MDW	410R103MDW	10	3	4000	11-1/2	7-3/4	7-3/4	12-3/4
410S123MDW	410R123MDW	12	3	4000	13-1/2	9-1/4"	9-1/4	14-1/4

VX WHEELS

VULKOLLAN™ THICK TREAD WHEELS

Highest Quality Polyurethane in the World

Extremely Durable

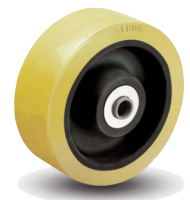
High Load Capacity

Ergonomic - Easy to Roll

High Abrasion Resistance

FEATURES

- Thickness: 1" thick polyurethane
- Wheel Face: Flat
- Finish: Orange/Brown tread on cast iron core
- Hardness: 95 Shore A
- Temperature Range: -40°F to +180°F



WHEEL OPTIONS

- Select bearing featured are recommended for standard applications. For special applications or alternate bearings consult Acorn.

Part Number Swivel Caster	Part Number Rigid Caster	Wheel Diameter (inch)	Tread Width (inch)	Load Capacity (lbs)	Overall Height (inch)	Swivel Radius (inch)	Swivel Radius w/Total Lock (inch)	Swivel Radius w/Wheel Brake (inch)
410SVX0632808	410RVX0632808	6	3	3000	7-1/2	5-1/2	6	10-1/2
410SVX0832808	410RVX0832808	8	3	4000	10-1/8	6-1/2	6-1/2	11-1/2
410SVX1032808	410RVX1032808	10	3	5000	11-1/2	7-3/4	7-3/4	12-3/4