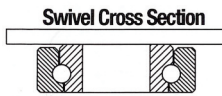


6 310 KINGPINLESS CASTERS

4,100 LBS. LOAD CAPACITY KINGPINLESS TYPE CASTERS



- **Top Plate:** 5/16" AISI 1045 heat treated steel welded inside and out for longer life.
- **Swivel Section:** One row of 1/2" ball bearings mounted in a heat treated precision machined raceway. Zerk in swivel section.
- **Yoke Base:** Notched AISI 1045 steel.
- **Legs:** 3/8" thick welded inside and out.
- **Axle:** 3/4" diameter.
- **Finish:** RoHS Zinc plating, for greater corrosion resistance than paint.



**TOE GUARDS
AVAILABLE WITH
ALL CASTERS.**

MOUNTING PLATE OPTIONS

TOP PLATE: (STANDARD)

- Plate Size:** 4-1/2" x 6-1/4"
- Bolt Holes:** 2-7/16" x 4-15/16"
slotted to
3-3/8" x 5-1/4"
- Bolt Size:** 1/2"

Nylacron™ Wheels

With Precision Ball Bearings for Any Application

Nylacron™ wheels with proper sized precision bearings are made to fit in any rig hub length and axle size. Nylacron™ wheels have greater load capacity ratings with better rollability while requiring less maintenance and have a longer life.

**SEE NYLACRON™ WHEEL SECTION
FOR CUSTOM SIZES & SHAPES.**

BRAKES OPTIONS



Poly Cam
specify **P**



PLB Integrated
specify **PLB**



Single Sided specify **SSB310**
Double Sided specify **DSB310**



Face Contact
specify **FBB**



**Hand Operated
Swivel Lock**
specify **SL3000000**

TYPICAL APPLICATIONS

- Conveyor-drawn tow-trucks
- Heavy duty bakery racks
- Production dollies
- Heavy duty dough troughs

WHEEL BEARING OPTIONS

Straight Roller **(01)**

Tapered Roller **(09)**

Precision Ball **(28)**

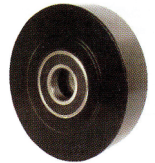
6 310 KINGPINLESS CASTERS

NY/MD WHEELS

NYLACRON™ WHEELS

- Precision Machined from Cast Polyamide Hardness 112-120 Rockwell R.
- Ultimate choice for Extremely High Load applications to replace metallic wheels.
- Offer very high abrasion resistance and very low rolling resistance under extreme loads.

- Resistant to salt, grease, alcohol and mild acids - can be used in corrosive applications with appropriate bearings.
- Precision Ball Bearings.
- Temperature Range: -40°F to +270°F.



Part Number Swivel Caster	Part Number Rigid Caster	Wheel Diameter (inch)	Tread Width (inch)	Load Capacity (lbs)	Overall Height (inch)	Swivel Radius (inch)	Swivel Radius w/Total Lock (inch)	Swivel Radius w/Wheel Brake (inch)
310S63NYMD	310R63NYMD	6	3	4100	7-1/2	5-1/2	6	10-1/2
310S83NYMD	310R83NYMD	8	3	4100	10-1/8	6-1/2	6-1/2	11-1/2
310S103NYMD	310R103NYMD	10	3	4100	11-1/2	7-3/4	7-3/4	12-3/4
310S123NYMD	310R123NYMD	12	3	4100	13-1/2	9-1/4"	9-1/4	14-1/4

NY/MC WHEELS

NYLACRON™ WHITE WHEELS

- Precision Machined from Cast Polyamide Hardness 112-120 Rockwell R.
- Ultimate choice for Extremely High Load applications to replace metallic wheels.
- Offer very high abrasion resistance and very low rolling resistance under extreme loads.

- Resistant to salt, grease, alcohol and mild acids - can be used in corrosive applications with appropriate bearings.
- Precision Ball Bearings.
- Temperature Range: -40°F to +270°F.



Part Number Swivel Caster	Part Number Rigid Caster	Wheel Diameter (inch)	Tread Width (inch)	Load Capacity (lbs)	Overall Height (inch)	Swivel Radius (inch)	Swivel Radius w/Total Lock (inch)	Swivel Radius w/Wheel Brake (inch)
310S63NYMC	310R63NYMC	6	3	4100	7-1/2	5-1/2	6	10-1/2
310S83NYMC	310R83NYMC	8	3	4100	10-1/8	6-1/2	6-1/2	11-1/2
310S103NYMC	310R103NYMC	10	3	4100	11-1/2	7-3/4	7-3/4	12-3/4
310S123NYMC	310R123NYMC	12	3	4100	13-1/2	9-1/4	9-1/4	14-1/4

DF WHEELS

DROP FORGED STEEL WHEELS

- AISI 1045 steel with machined tread faces.
- Virtually indestructible and easy to maneuver.
- High abrasion and oil resistant.

- Can be use in the roughest of applications on the poorest of floors.
- Precision Ball Bearings.
- Temperature Range: -150°F to +800°F.



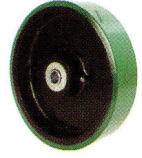
Part Number Swivel Caster	Part Number Rigid Caster	Wheel Diameter (inch)	Tread Width (inch)	Load Capacity (lbs)	Overall Height (inch)	Swivel Radius (inch)	Swivel Radius w/Total Lock (inch)	Swivel Radius w/Wheel Brake (inch)
310S63DF	310R63DF	6	3	4000	7-1/2	5-1/2	6	10-1/2
310S83DF	310R83DF	8	3	4000	10-1/8	6-1/2	6-1/2	11-1/2
310S103DF	310R103DF	10	3	4000	11-1/2	7-3/4	7-3/4	12-3/4
310S123DF	310R123DF	12	3	4000	13-1/2	9-1/4"	9-1/4	14-1/4

SJS WHEELS

POLYURETHANE WHEELS

- Polyurethane tread wheels firmly bonded to Precision Machined Cast Iron Core.
- 93 + 3 Shore A.
- Low rolling resistance; Smooth and noiseless running.
- Non-marking and floor protective.

- Good Abrasion and cut resistance.
- Ideal for medium duty applications.
- Precision Ball Bearings.
- Temperature Range: -40°F to +180°F.
- Available in Anti-Static add "AS" after wheel.



Part Number Swivel Caster	Part Number Rigid Caster	Wheel Diameter (inch)	Tread Width (inch)	Load Capacity (lbs)	Overall Height (inch)	Swivel Radius (inch)	Swivel Radius w/Total Lock (inch)	Swivel Radius w/Wheel Brake (inch)
310S63SJS	310R63SJS	6	3	2100	7-1/2	5-1/2	6	10-1/2
310S83SJS	310R83SJS	8	3	2500	10-1/8	6-1/2	6-1/2	11-1/2
310S103SJS	310R103SJS	10	3	3000	11-1/2	7-3/4	7-3/4	12-3/4
310S123SJS	310R123SJS	12	3	3500	13-1/2	9-1/4	9-1/4	14-1/4

MDW WHEELS

DUCTILE CAST STEEL WHEELS

- Machined tread face.
- Crown tread Face makes maneuverability easy.
- Higher Load Capacities compared to Cast Iron Wheels.
- Suitable for extra heavy loads towed in punishing conditions.
- High abrasion and oil resistance.
- Precision Ball Bearings.
- Temperature Range: 800°F.



Part Number Swivel Caster	Part Number Rigid Caster	Wheel Diameter (inch)	Tread Width (inch)	Load Capacity (lbs)	Overall Height (inch)	Swivel Radius (inch)	Swivel Radius w/Total Lock (inch)	Swivel Radius w/Wheel Brake (inch)
310S63MDW	310R63MDW	6	3	3300	7-1/2	5-1/2	6	10-1/2
310S83MDW	310R83MDW	8	3	4000	10-1/8	6-1/2	6-1/2	11-1/2
310S103MDW	310R103MDW	10	3	4000	11-1/2	7-3/4	7-3/4	12-3/4
310S123MDW	310R123MDW	12	3	4000	13-1/2	9-1/4"	9-1/4	14-1/4

ME WHEELS

ERGONOMIC POLYURETHANE DONUT TREAD WHEELS CAST IRON CORE

- For Low Push-Pull Efforts.
- Polyurethane firmly bonded to Precision Machined Cast Iron Core.
- Red Tread 93+ 3 Shore A.
- Non-marking and floor protective.

- Tread Options:
Softer 80A - Yellow Tread (specify ME-Z)
Harder 73D - Blue Tread (specify ME-F).
- Precision Ball Bearings.
- Temperature Range: -40°F to +180°F.
- Available in Anti-Static add "AS" after wheel.



Part Number Swivel Caster	Part Number Rigid Caster	Wheel Diameter (inch)	Tread Width (inch)	Load Capacity (lbs)	Overall Height (inch)	Swivel Radius (inch)	Swivel Radius w/Total Lock (inch)	Swivel Radius w/Wheel Brake (inch)
310S63ME	310R63ME	6	3	2300	7-1/2	5-1/2	6	10-1/2
310S83ME	310R83ME	8	3	3100	10-1/8	6-1/2	6-1/2	11-1/2
310S103ME	310R103ME	10	3	4000	11-1/2	7-3/4	7-3/4	12-3/4
310S123ME	310R123ME	12	3	4000	13-1/2	9-1/4	9-1/4	14-1/4

6 310 KINGPINLESS CASTERS

DROP FORGED STEEL WHEELS 09 PRECISION TAPERED BEARING FS

Part Number Swivel Caster	Part Number Rigid Caster	Wheel Diameter (inch)	Tread Width (inch)	Load Capacity (lbs)	Overall Height (inch)	Swivel Lead (inch)
310S63FS	310R63FS	6	3	4000	7-1/2	1-3/8
310S83FS	310R83FS	8	3	4100	10-1/8	2-1/16
310S103FS	310R103FS	10	3	4100	11-1/2	2-1/4



SWIVEL-EAZ™ ROUND TREAD 95A 28 PRECISION BALL BEARING SWE95 ADD SUFFIX FT FOR FLAT TREAD

Part Number Swivel Caster	Part Number Rigid Caster	Wheel Diameter (inch)	Tread Width (inch)	Load Capacity (lbs)	Overall Height (inch)	Swivel Lead (inch)
310S63SWE95	310R63SWE95	6	3	1100	7-1/2	1-3/8
310S83SWE95	310R83SWE95	8	3	2400	10-1/8	2-1/16
310S103SWE95	310R103SWE95	10	3	3800	11-1/2	2-1/4



POLYURETHANE ON CAST IRON 28 PRECISION BALL BEARING PF

Part Number Swivel Caster	Part Number Rigid Caster	Wheel Diameter (inch)	Tread Width (inch)	Load Capacity (lbs)	Overall Height (inch)	Swivel Lead (inch)
310S63PF	310R63PF	6	3	3000	7-1/2	1-3/8
310S83PF	310R83PF	8	3	4000	10-1/8	2-1/16
310S103PF	310R103PF	10	3	4100	11-1/2	2-1/4
310S123PF	310R123PF	12	3	4100	13-1/2	2-11/16



POLYURETHANE ON CAST IRON 28 PRECISION BALL BEARING PY95A

Part Number Swivel Caster	Part Number Rigid Caster	Wheel Diameter (inch)	Tread Width (inch)	Load Capacity (lbs)	Overall Height (inch)	Swivel Lead (inch)
310S63PY	310R63PY	6	3	2040	7-1/2	1-3/8
310S83PY	310R83PY	8	3	2520	10-1/8	2-1/16
310S103PY	310R103PY	10	3	3000	11-1/2	2-1/4
310S123PY	310R123PY	12	3	3420	13-1/2	2-11/16



VX WHEELS

VULKOLLAN™ THICK TREAD WHEELS

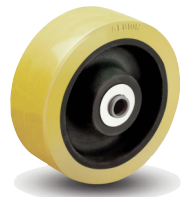
Highest Quality Polyurethane in the World
Extremely Durable
High Load Capacity
Ergonomic - Easy to Roll
High Abrasion Resistance

FEATURES

- Thickness: 1" thick polyurethane
- Wheel Face: Flat
- Finish: Orange/Brown tread on cast iron core
- Hardness: 95 Shore A
- Temperature Range: -40°F to +180°F

WHEEL OPTIONS

- Select bearing featured are recommended for standard applications. For special applications or alternate bearings consult Acorn.



Part Number Precision Ball	Wheel Diameter (inch)	Tread Width (inch)	Load Capacity (lbs)	Overall Height (inch)	Swivel Radius (inch)	Swivel Radius w/Total Lock (inch)	Swivel Radius w/Wheel Brake (inch)
310VX0522808	6	3	3000	8	5-1/8	6	10-1/8
310VX0622808	8	3	4000	10-1/2	6-1/4	6-1/4	11-1/4
310VX0822808	10	3	5000	12-1/2	7-3/4	7-3/4	12-3/4

MEGALOAD™ AND VULKOLLAN™ WHEELS WITH PRECISION BALL BEARINGS AVAILABLE TO FIT THIS CASTER SERIES. SIZES 6 X 3, 8 X 3, 10 X 3 & 12 X 3.