

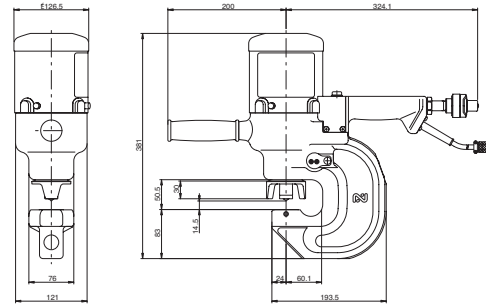
HA06-1322



MODEL

# HA06-1322

HA06-1322



### Specifications

Model		HA06-1322	
Max. Throat Depth	inch (mm)	2-3/8" (60)	
Punching Capacity (for Mild Steel)	Max. Punching Diameter	inch (mm)	7/8" (22)
	Max. Punching Thickness	inch (mm)	1/2" (13)
Hole Making Time	sec	Punching Time 10.5	
Allowable Max. pressure	psi (kg/cm <sup>2</sup> )	10,000 psi (700)	
Max. Output	lbf (tf)	68,355 (34)	
Ram Stroke	inch (mm)	53/64" (21)	
Mass (Weight)	lbs (kg)	47 (21.5)	

### Standard Accessories for HA06-1322

- Hose cord assembly
- 22 mm "D" series punch & die
- Sub handle assembly
- Spanner wrench
- 4 mm Allen wrench
- Tool box

HA07-1624



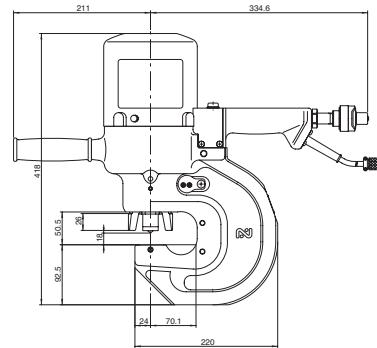
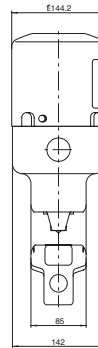
MODEL

# HA07-1624

### Specifications

<b>Model</b>		<b>HA07-1624</b>
<b>Max. Throat Depth</b>	inch (mm)	2-3/4" (70)
<b>Punching Capacity (for Mild Steel)</b>	<b>Max. Punching Diameter</b>	15/16" (24)
	<b>Max. Punching Thickness</b>	5/8" (16)
<b>Hole Making Time</b>	sec	Punching Time 16.5
<b>Allowable Max. pressure</b>	psi (kg/cm <sup>2</sup> )	10,000 psi (700)
<b>Max. Output</b>	lbf (tf)	97,020 (49)
<b>Ram Stroke</b>	inch (mm)	1" (25)
<b>Mass (Weight)</b>	lbs (kg)	63 (28.5)

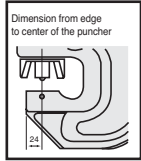
HA07-1624



### Standard Accessories for HA07-1624

- Hose cord assembly
- 22 mm "D" series punch & die
- Sub handle assembly
- Spanner wrench
- 4 mm Allen wrench
- Tool box

HA11-1624



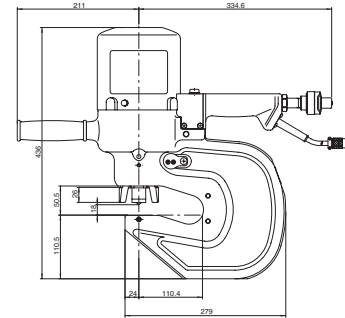
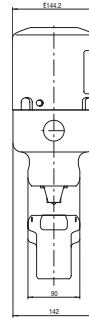
MODEL

# HA11-1624

### Specifications

<b>Model</b>	<b>HA11-1624</b>	
<b>Max. Throat Depth</b>	inch (mm)	4-5/16" (110)
<b>Punching Capacity (for Mild Steel)</b>	<b>Max. Punching Diameter</b>	inch (mm) 15/16" (24)
	<b>Max. Punching Thickness</b>	inch (mm) 5/8" (16)
<b>Hole Making Time</b>	sec	Punching Time 16.5
<b>Allowable Max. pressure</b>	psi (kgf/cm <sup>2</sup> )	10,000 psi (700)
<b>Max. Output</b>	lbf (tf)	97,020 (49)
<b>Ram Stroke</b>	inch (mm)	1" (25)
<b>Mass (Weight)</b>	lbs (kg)	78 (35.5)

HA11-1624



### Standard Accessories for HA11-1624

- Hose cord assembly
- 22 mm "D" series punch & die
- Sub handle assembly
- Spanner wrench
- 4 mm Allen wrench
- Tool box

# SC-05 Portable Hydraulic Pump

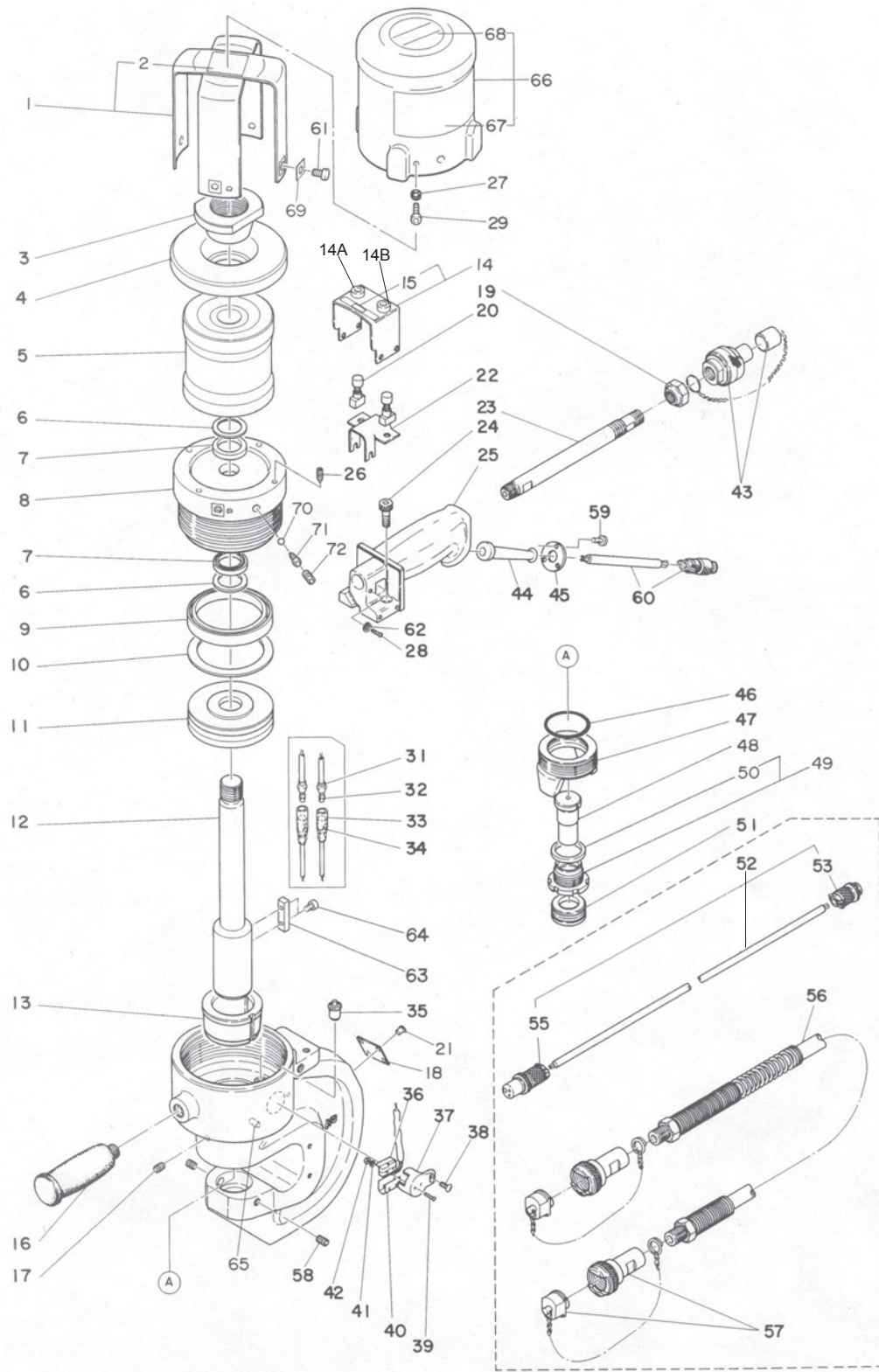
Single-Acting Hydraulic Pump for HA Series Punches



## Specifications

<b>Model</b>		<b>SC-05</b>	
<b>Power Source (Single Phase)</b>		115V AC 50/60Hz	230V AC 50/60Hz
<b>Max. Output Pressure</b> psi (kgf/cm <sup>2</sup> )		10,000 (700)	
<b>Output</b>	<b>At No Load</b>	<b>60Hz</b> qt/min	1.28
	<b>At 10,000psi</b>	<b>60Hz</b> qt/min	0.59
<b>Motor</b>		0.4kW 4P	
<b>Reservoir Capacity</b> qt		4.26	
<b>Discharge Port</b>		Rc (PT) 3/8	
<b>Mass (Weight) with oil</b> lbs (kg)		60 (27.5)	

# SELFER ACE HA07-1624/HA11-1624 ASSEMBLY



# SELFER ACE HA07-1624/HA11-1624 PARTS LIST

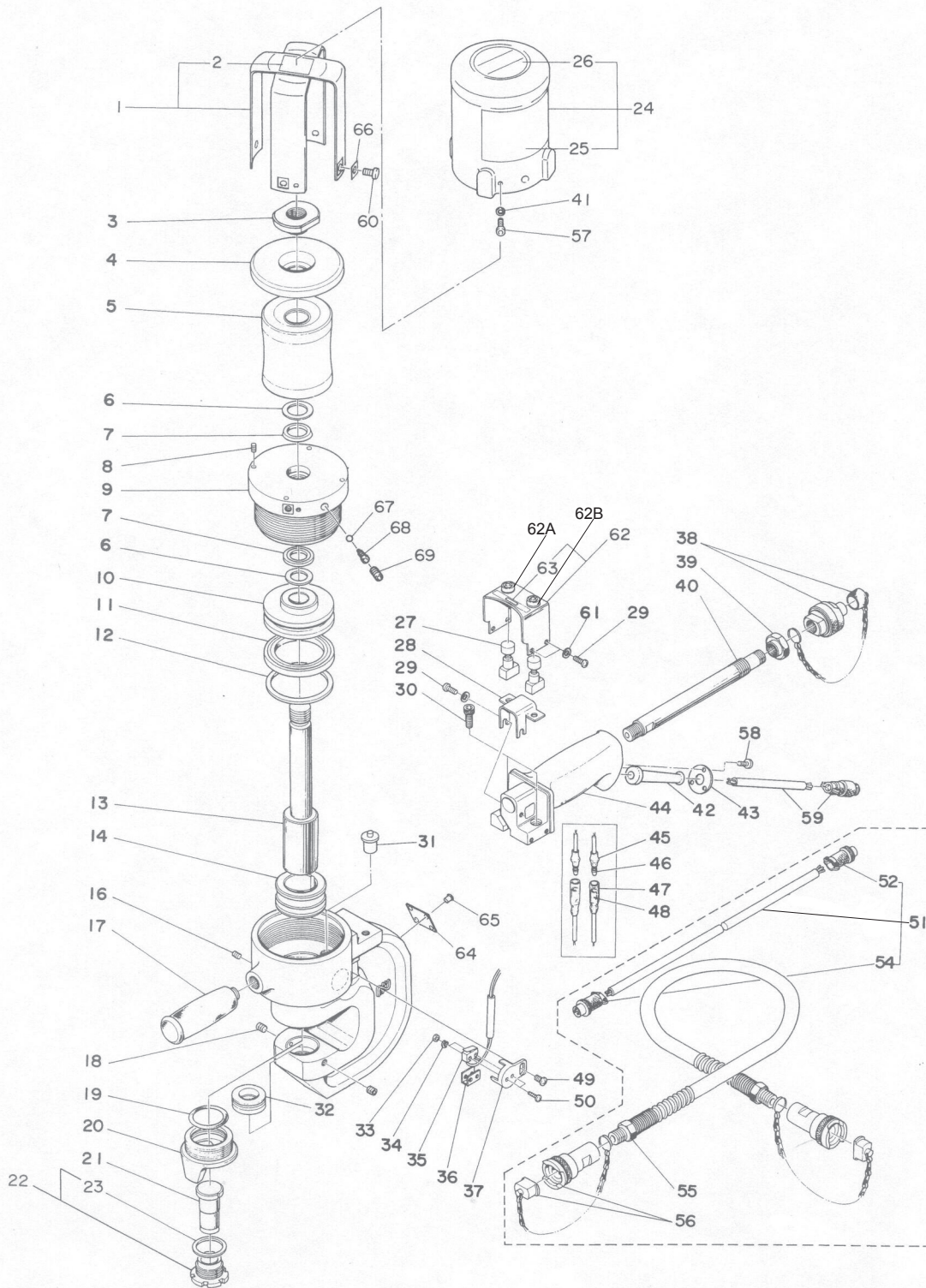
The parts numbers with ( ) are included in the Ass'y parts written above them.

No.	Part No.	Part Name	Q'ty	Price
1	TB04929	Inner Cover Ass'y	1 set	
2	(TQ06572)	Caution – Inner Cover Label	1	
3	TP13074	Nut M27	1	
4	TP13073	Upper Plate	1	
5	TB00273	Return Cushion Ass'y 106.5	1	
6	TP07772	Back-up Ring 28 X 35.5 X 1.25	2	
7	TP07771	U Packing UHS-28	2	
8	TQ04516	Cap	1	
9	TP07768	U Packing UHS-85	1	
10	TP07769	Back-up Ring 85 X 100 X 2 T2	1	
11	TP08557	Piston	1	
12	TP13078	Ram (Keyed)	1	
13	TP14084	Bushing (Keyed)	1	
14	TB04925	Switch Cover Ass'y	1 set	
15	(TP08411)	Switch Label	1	
14A	TP10877	Black Cap (Start Button Cover)	1	
14B	TP10878	Red Cap (Stop Button Cover)	1	
17	TP06397	Hex Screw 6 X 8	1	
18	TQ06613	Plate Model Number (HA07-1624)	1	
	TQ06570	Plate Model Number (HA11-1624)	1	
19	TP07793	Set Screw	1	
20	TQ06476	Push Button Switch MB2011	2	
21	TP05136	Drive Rivet No.2 X 4.8	4	
22	TP13750	Bracket	1	
23	TP07792	Nipple PT3/8 X PT3/8 Special	1	
24	TP01460	Hex. Bolt 8 X 20	2	
25	TQ03522	Hand Grip	1	
26	TP07773	Hex. Socket Screw	4	
27	TQ03545	Conical Spring Washer M	4	
28	TP05119	+ Screw 5 X 8	6	
29	TP01644	Hex. Socket Head Bolt 6 X 12	4	
31	TP08188	Insulating Sleeve Plug	2	
32	TP08186	Connection Plug	2	
33	TP08189	Insulating Sleeve Receptacle	2	
34	TP08187	Receptacle 170021-1	2	
35	TA93768	Push Rod Ass'y	1 set	
36	TP11442	Limit Switch	1	
37	TP07783	Limit Switch Cover	1	
38	TP02419	+ Screw 6 X 10	1	
39	TP07784	+ Screw 2.3 X 15	2	
40	TP08135	Paper for Insulation	1	
41	TP07785	Spring Lock Washer M2.3	2	
42	TP08139	Hex. Nut M2.3	2	
43	CA94119	700R-3P Cupla w/Cap	1 set	
44	TP12928	Cord Sleeve	1	
45	TP12929	Stopper	1	
46	TP07786	O Ring P-46	1	
47	TP07774	Stripper	1	
49	TA99036	Lock Nut Ass'y	1 set	
50	(TP07009)	Urethane Washer 31 X 40 X 3.1	1	
58	TP09458	Hex. Screw 8 X 14	2	
59	TP06342	Hex. Bolt 4 X 10	3	
60	TA94434	Metal Adapter Ass'y	1 set	
	(TA08712)	Metal Concent Adapter NCS-163-AD	1	
61	TQ03526	LR Cap Screw 8 X 12	4	
62	TP03508	Washer M5	6	
63	TP12944	Key 10 X 8 X 42	1	
64	TP06342	Hex Bolt 4 X 10	2	
65	TP14090	Pin 7 X 12	1	
66	TB04996	Cover Ass'y (HA07-1624)	1 set	
	TB04928	Cover Ass'y (HA11-1624)	1 set	
67	(TQ06571)	Caution Label	1	
68	(TQ03565)	Model Number Label (HA07-1624)	1	
	(TQ03564)	Model Number Label (HA11-1624)	1	
69	TQ03855	Oblong Washer	4	
70	CP01181	Ball 5/32	1	
71	TP05154	Drain Screw	1	
72	TP07843	Hex. Screw 8 X 8	1	

## ACCESSORIES

16	TA92089	Sub Handle Ass'y	1 set	
52	TA93778	Switch Cord Ass'y	1 set	
53	(TP07795)	Metal Receptacle Plug	1	
55	(TP07796)	Metal Receptacle Plug	1	
56	TP05184	Ultra-High Pressure Hose	1	
57	CA94118	700R-3S Cupla w/Cap	2 sets	
	TP06012	Spanner	1	
	TP10198	Tool Box 285 X 125 X 62	1	
	TP01939	Hex Wrench Key 4	1	
48	TJ06676	Punch 22	1	
51	TJ06677	Die 22	1	
	TQ06573	Instruction Manual	1	

# SELFER ACE HA06-1322 ASSEMBLY



# SELFER ACE HA06-1322 PARTS LIST

The parts numbers with ( ) are included in the Ass'y parts written above them.

No.	Part No.	Part Name	Q'ty	Price
1	TB04990	Inner Cover Ass'y	1 set	
2	(TQ06572)	Caution Inner Cover Label	1	
3	TP08301	Nut M24	1	
4	TP13073	Upper Plate	1	
5	TP08299	Return Cushion 96.5	1	
6	TP08313	Back-up Ring 25 X 33 X 1.25	2	
7	TP08312	U Packing UHS-25	2	
8	TP06258	Hex Screw 5 X 8	4	
9	TQ04515	Cap	1	
10	TP08303	Piston	1	
11	TP08309	U Packing US-67	1	
12	TP08310	Back-up Ring 67 X 82 X 2 T2	1	
13	TP08308	Ram	1	
14	TP08307	Bushing	1	
16	TP06397	Hex Screw 6 X 8	1	
18	TP09458	Hex Screw 8 X 14	1	
19	TP08520	O Riing P-42	1	
20	TP08305	Stripper	1	
22	TA99036	Lock Nut Ass'y	1 set	
23	TP07009	Urethane Washer 31 X 40 X 3.1	1	
24	TB04989	Cover Ass'y	1 set	
25	(TQ06571)	Caution Label	1	
26	(TQ03540)	Model Number Label	1	
27	TP03751	Push Switch MB2011 L/B	2	
28	TP13750	Bracket	1	
29	TP05119	+ Screw 5 X 8	6	
30	TP01460	Hex Bolt 8 X 20	2	
31	TA94558	Push Rod Ass'y	1 set	
33	TP08139	Hex Nut M2.3	2	
34	TP07785	Spring Lock Washer M2.3	2	
35	TP11442	Limit Switch	1	
36	TP08135	Paper for Insulation	1	
37	TP07783	Limit Switch Cover	1	
38	CA94119	700R-3P Cupla w/Cap	1 set	
39	TP07793	Set Screw	1	
40	TP07792	Nipple PT3/8 X PT3/8	1	
41	TQ03545	Conical Spring Washer M6	4	
42	TP12928	Cord Sleeve	1	
43	TP12929	Stopper	1	
44	TQ03522	Grip	1	
45	TP08188	Insulating Sleeve Plug	2	
46	TP08186	Connection Plug	2	
47	TP08189	Insulating Sleeve Receptacle	2	
48	TP08187	Receptacle 170021-1	2	
49	TP02419	+ Screw 6 X 10	1	
50	TP07784	+ Screw 2.3 X 15	2	
57	TP01644	Hex. Socket Head Bolt 6 X 12	4	

No.	Part No.	Part Name	Q'ty	Price
58	TP06342	Hex Bolt 4 X 10	3	
59	TA94434	Metal Adapter Ass'y	1 set	
	(TP08712)	Metal Receptacle Adapter	1	
60	TQ03526	LR Cap Screw 8 X 12	4	
61	TP03508	Washer M5	6	
62	TB04925	Switch Cover Ass'y	1 set	
63	(TP08411)	Switch Label	1	
62A	TP10877	Black Cap (Start Button Cover)	1	
62B	TP10878	Red Cap (Stop Button Cover)	1	
64	TQ06612	Plate Model Number	1	
65	TP05136	Drive Rivet No.2 X 4.8	4	
66	TQ03855	Oblong Washer	1	
67	CP01181	Ball 5/32	1	
68	TP05154	Drain Screw	1	
69	TP07843	Hex Screw 8 X 8	1	

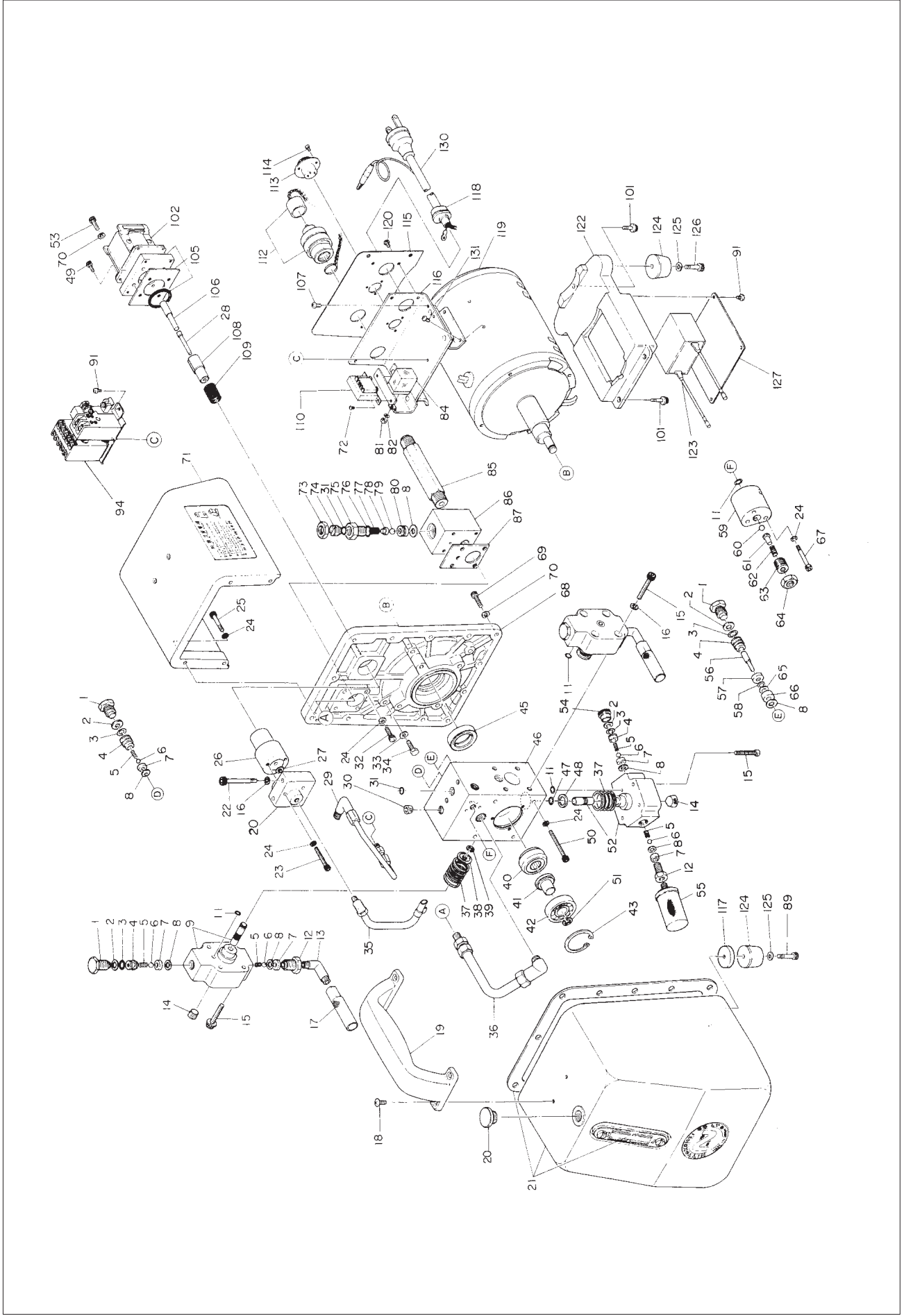
  

**ACCESSORIES**

17	TA92089	Sub Handle Ass'y	1 set	
51	TA93778	Switch Cord Ass'y	1 set	
52	(TP07795)	Metal Receptacle Plug	1	
54	(TP07796)	Metal Receptacle Plug	1	
55	TP05184	Ultra-High Pressure Hose	1	
56	CA94118	700R-3S Cupla w/Cap	2 sets	
	TP06012	Spanner	1	
	TP10198	Tool Box 285 X 125 X 62	1	
	TP01939	Hex Wrench Key 4	1	
21	TJ06676	Punch 22	1	
22	TJ06677	Die 22	1	
	TQ06573	Instruction Manual	1	



# PUMP SC-05 ASSEMBLY AND PARTS LIST



The part numbers with ( ) are included in the Assy parts written above them.

No.	Part No.	Part Name	Q'ty	Price
1	TP05874	Check Set Plug	4	
2	TP05873	Back-up Ring P-10	5	
3	TP05872	O-Ring P-10	5	
4	TP05871	Delivery Valve	5	
5	TP05870	Spring 0.3 X 5 X 7	2	
6	CP00800	Ball 1/4	7	
7	TP05869	Valve Seat	7	
8	TP05868	Packing	9	
9	TA9A586	Cylinder Piston Sub Assy	2 sets	
11	TP05878	O Ring P-8	3	
12	TP05875	Suction Valve	3	
13	TP05876	Elbow PT1/8 X PF1/4	2	
14	TP05863	Hex. Screw PT1/4	3	
15	TQ03341	Hex. Bolt 6 X 30	12	
16	TP00629	Spring Washer M6	2	
17	TP05877	Filter	2	
18	CP20661	+ Screw 6 X 16	4	
19	TQ01323	Hand Grip	1	
20	TA9A587	Valve Spool Sub Assy	1	
21	TA97817	Oil Tank Assy	1set	
22	TP05903	Hex. Bolt 6 X 60	2	
23	TP05882	Hex. Bolt 5 X 35	3	
24	TP00513	Spring Washer M5	10	
25	TQ00873	Hex. Socket Head Bolt 5 X 22	4	
26	TP05881	Plunger Guide	1	
27	TP05880	Miniature Y Packing MY-3	1	
28	TQ02883	Valve Spool	1 set	
29	TA94198	Steel Pipe Assy	1 set	
30	TP06597	Hex. Screw PT1/8	1	
31	TP05949	O Ring P-7	3	
32	TP08013	Hex. Bolt 5 X 25	4	
33	TP05853	Seat Washer W5	4	
34	TP13247	Hex. Bolt 5 X 22	4	
35	TA92455	Copper Pipe Assy	1 set	
36	TA92456	Steel Pipe Assy	1 set	
37	TP05865	Piston Spring	3	
38	TP05866	Spring Seat	2	
39	TP05867	Retaining Ring E-64	2	
40	TP09671	Track Follower	1	
41	TP09672	Distance Collar	1	
42	TP05928	Ball Bearing 6302	1	
43	CP01086	Internal Retaining Ring C	1	
45	TP05856	Oil Seal S 25 X 38 X 8	1	
46	TQ01320	Pump Body	1	

No.	Part No.	Part Name	Q'ty	Price
47	TP07962	Retaining Ring WR-11	1	
48	TP07961	Spring Seat	1	
49	TQ03328	Hex. Socket Head Cap Screw 5 X 12	4	
50	TP05857	Hex. Bolt 5 X 70	4	
51	TP09673	E Ring 10	1	
52	TA9A603	L Cylinder Piston Sub Assy	1 set	
53	TP01945	Hex. Bolt 5 X 12	5	
54	TP07963	Check Set Plug	1	
55	TP07964	Suction Filter	1	
56	TP06619	Spool	1	
57	TP06620	Valve Sleeve Plate	1	
58	CQ15608	O Ring P-6	1	
59	TP06632	Unloader Valve	1	
60	TP06633	Ball 5/16	1	
61	TP07966	Ball Retainer	1	
62	TP07967	Spring 2 X 7 X 25.2	1	
63	TQ03407	Hex Bolt 12 X 15	1	
64	TP05422	Hex. Nut M12	1	
65	TP06618	Back-up Ring P-6	1	
66	TP06616	Valve Sleeve	1	
67	TP06637	Hex. Bolt 5 X 40	3	
68	TQ01319	Bracket	1	
69	TP02863	Hex. Bolt 5 X 20	13	
70	TP05950	Copper Washer 5.5 X 8.5 X 1	17	
71	TP12671	Switch Cover	1	
72	FS00463	Pan Head Screw 3 X 6	2	
73	TP05893	Lock Nut	1	
74	TP05892	Adjust Screw	1	
75	TP05889	Relief Valve	1	
76	TP12010	O Ring P-14	1	
77	TP05891	Relief Spring	1	
78	TP05890	Ball Retainer	1	
79	TP05948	Ball 9/32	1	
80	TP05888	Relief Valve Sheet	1	
81	TP08266	Hex. Nut M2.6	1	
82	TP08267	Toothed Lock Washer M2.6	1	
84	TP08264	Relay MPM-200	1	
85	TP05919	Nipple	1	
86	TP05887	Relief Valve Body	1	
87	TP05904	Gasket	1	
89	TP03086	Hex. Bolt 6 X 20	2	
91	TQ03193	Pan Head Screw 4 X 6	6	
	TA98690	Magnet Switch Assy (115V)	1 set	
94	TA98692	Magnet Switch (230V)	1 set	

No.	Part No.	Part Name	Q'ty	Price
101	TQ03329	Hex. Bolt 5 X 15	3	
102	TP08395	Solenoid AV40 (115V)	1	
	TP07677	Solenoid AV40 (230V)	1	
105	TA94480	Plate Assy	1 set	
106	TP05886	Rod	1	
107	LP08489	+ Screw 4 X 6	1	
108	TP05884	Plunger	1	
109	TP05883	Return Spring	1	
	TP12354	Transformer (100-115V)	1	
110	TP12353	Transformer (200-230V)	1	
112	CA94118	700R-3S Cupla w/Cap	1 set	
113	TP07969	Metal Receptacle	1	
114	TP02902	+ Screw 3 X 6	3	
115	TP08397	Name Plate	1	
116	TQ00393	Switch Plate	1	
117	TP09669	Spacer 6.5 X 28 X 5	2	
118	TP01757	Cord Stopper	1	
119	TA97964	Motor Assy (115V)	1 set	
	TA97968	Motor Assy (220-240V)	1 set	
120	TP00056	+ Screw 3 X 6	4	
122	TQ01321	Condenser Box	1	
123	TB04312	Condenser Assy	1 set	
124	TP05925	Rubber Foot	4	
125	TP05926	Washer 6.5 X 10 X 1	4	
126	TP07118	Hex. Bolt 6 X 16	2	
127	TQ01322	Condenser Cover	1	
	TA9A758	Cabtyre Cable Assy	1 set	
130	TA9A758	Cabtyre Cable Assy (220-240V)	1 set	
131	LQ00190	+ Pan Head Screw 4 X 8	4	

**ACCESSORIES**

No.	Part No.	Part Name	Q'ty	Price
20	TA92729	Auxiliary Oil Can Assy	1 set	
	TP05929	Oil Cap	1	
	TP03249	Hex Wrench Key 8	1	

# HPD-05 Portable Hydraulic Pump

## Double-Acting Hydraulic Pump



### Specifications

<b>Model</b>	HPD-05	
Power Source (Single Phase)	115 V/230 V AC	
Allowable Max. Pressures	10,000psi (700 kgf/cm <sup>2</sup> )	
<b>Output</b> qt/min	<b>50 Hz</b>	<b>60 Hz</b>
At No Load	1.28	1.53
At 10,000 psi	0.59	0.70
<b>Motor</b>	0.4kW 4P	
<b>Reservoir Capacity</b> qt	4.26	
<b>Discharge Port</b>	Rc 3/8	
<b>Electro-Magnetic Valve</b>	4 way 3 position valve	
<b>Mass (Weight)</b> lbs (kg)	72 (32.5)	

# HS06-1322



Allowable Max. Pressure

**82,560 lbs (41ton)**

Max. Punching Thickness: 1/2"

(A36)

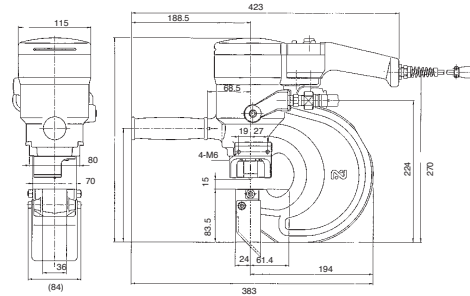
Max. Punching Diameter: 7/8"

MODEL

# HS06-1322

## Specifications

<b>Model</b>	HS06-1322	
<b>Max. Throat Depth</b>	inch (mm)	2-3/8" (60)
<b>Punching capacity</b>	inch (mm)	<b>Max. Punching Diameter</b> <b>Max. Punching Thickness</b>
Mild Steel A36		7/8" (22)   1/2" (13)
Stainless Steel 304		7/8" (22)   1/4" (6)
<b>Hole Making Time</b>	Punching Time 7.9 sec. Returning Time 3.4 sec.	
<b>Allowable Max. Pressure</b>	10.000 psi (700 kgf/cm <sup>2</sup> )	
<b>Max. Output</b>	lbs (ton)	82,650 (41)
<b>Ram Stroke</b>	inch (mm)	13/16" (21)
<b>Mass (Weight)</b>	lbs (kg)	45 (20.5)



## Standard Accessories for HS06-1322

- Hose kit assembly
- Hose cord assembly
- Sub handle assembly
- Tool box
- 4 mm Allen wrench
- #12 Spanner wrench
- 22 mm "D" series punch & die
- Chip guard assembly
- Spanner

# HS07-1624

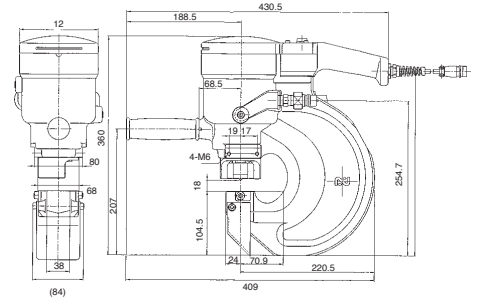
Allowable Max. Pressure

**104,380 lbs (52ton)**

Max. Punching Thickness: 5/8"  
(A36)  
Max. Punching Diameter: 15/16"

MODEL

# HS07-1624



## Specifications

<b>Model</b>	HS07-1624	
<b>Max. Throat Depth</b>	inch (mm)	2-3/4" (70)
<b>Punching capacity</b>	inch (mm)	<b>Max. Punching Diameter</b> <b>Max. Punching Thickness</b>
Mild Steel A36		15/16" (24)    5/8" (16)
Stainless Steel 304		15/16" (24)    1/4" (6)
<b>Hole Making Time</b>	Punching Time 11.8 sec. Returning Time 5.7 sec.	
<b>Allowable Max. Pressure</b>	10,000 psi (700 kgf/cm <sup>2</sup> )	
<b>Max. Output</b>	lbs (ton)	104,380 (52)
<b>Ram Stroke</b>	inch (mm)	1" (25)
<b>Mass (Weight)</b>	lbs (kg)	56 (25.5)

\*Can be modified to accept 1-1/16" punch & die. Consult factory.

## Standard Accessories for HS07-1624

- Hose kit assembly
- Hose cord assembly
- Sub handle assembly
- Tool box
- 4 mm Allen wrench
- #12 Spanner wrench
- 22 mm "D" series punch & die
- Chip guard assembly
- Spanner

# HS11-1624

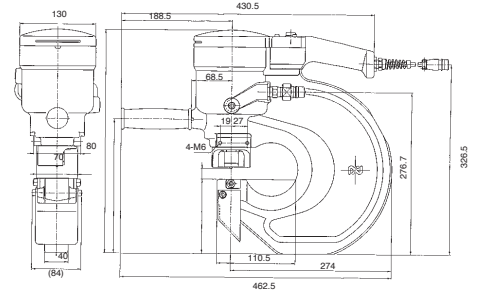
Allowable Max. Pressure

**104,380 lbs (52ton)**

Max. Punching Thickness: 5/8"  
(A36)  
Max. Punching Diameter: 15/16"

MODEL

# HS11-1624



## Specifications

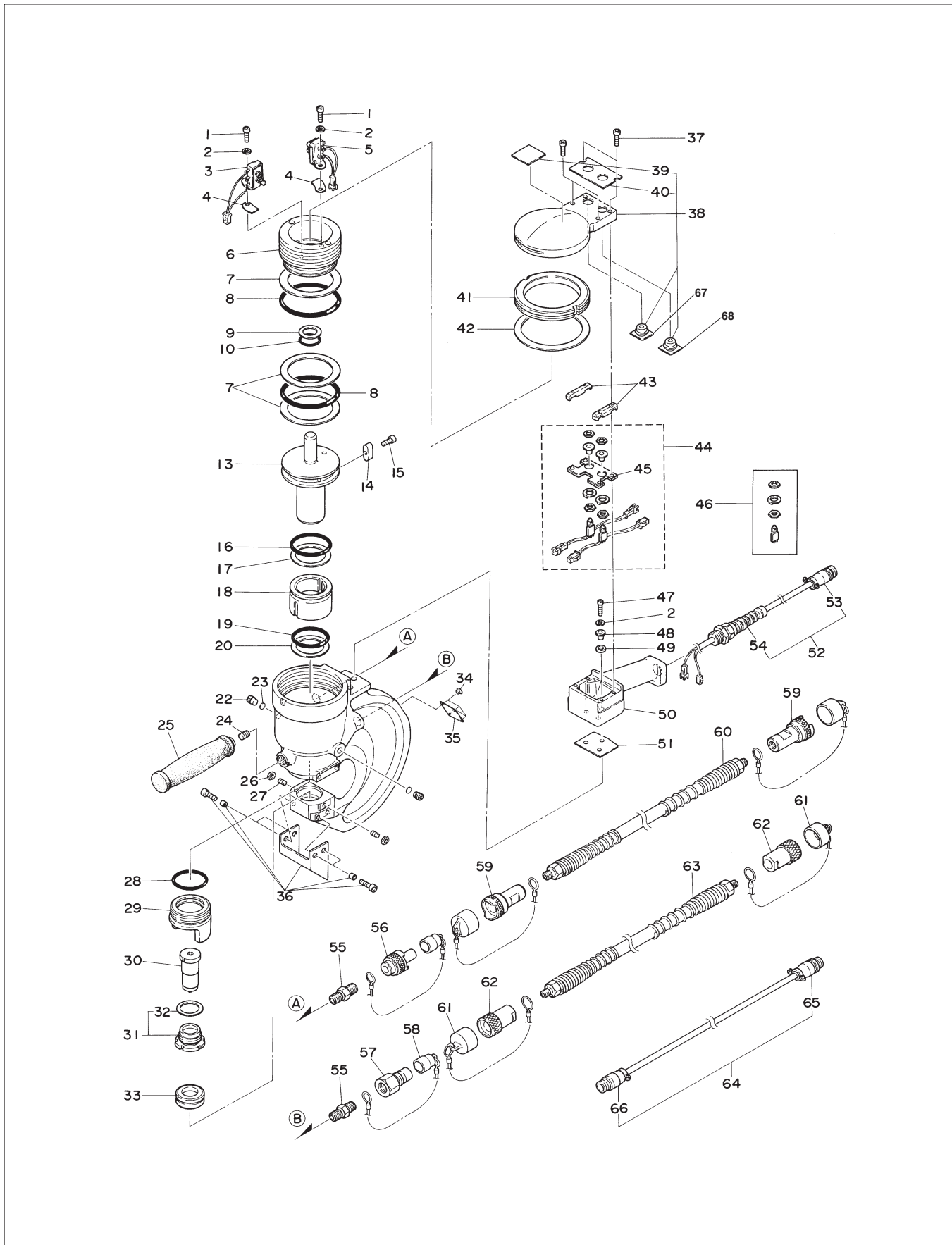
Model		HS11-1624		
Max. Throat Depth	inch (mm)	4-5/16" (110)		
Punching capacity	inch (mm)	Max. Punching Diameter	Max. Punching Thickness	
		Mild Steel A36	15/16" (24)	5/8" (16)
		Stainless Steel 304	15/16" (24)	1/4" (6)
Hole Making Time		Punching Time 11.8 sec. Returning Time 5.7 sec.		
Allowable Max. Pressure		10,000 psi (700 kgf/cm <sup>2</sup> )		
Max. Output	lbs (ton)	104,380 (52)		
Ram Stroke	inch (mm)	1" (25)		
Mass (Weight)	lbs (kg)	66 (30)		

\*Can be modified to accept 1-1/16" punch & die. Consult factory.

## Standard Accessories for HS11-1624

- Hose kit assembly
- Hose cord assembly
- Sub handle assembly
- Tool box
- #12 Spanner wrench
- 22 mm "D" series punch & die
- Chip guard assembly
- Spanner

# SELFER ACE HS07-1624/HS11-1624 ASSEMBLY



# SELFER ACE HS07-1624/HS11-1624 PARTS LIST

The parts numbers with ( ) are included in the Ass'y parts written above them.

No.	Part No.	Part Name	Q'ty	Price
1	TP01644	Hex. Socket Head Bolt 6 X 12	2	
2	TP00629	Spring Washer M6	5	
3	TB02278	Limit Switch Lower Ass'y	1 set	
4	(TQ02047)	Shim 1.0 (for Adjustment)		
4	(TQ02048)	Shim 0.5		
5	TB02277	Limit Switch Upper End Ass'y	1 set	
6	TQ02014	Cap	1	
7	TQ02015	Back-up Ring P-85 T3	3	
8	TQ02011	O-Ring P-85 PUR	2	
9	CP23977	Back-up Ring P-20 T2	1	
10	TQ02016	O-Ring P-20	1	
13	TQ02005	Ram	1	
14	TQ02006	Parallel Key 10 X 8 X 22	1	
15	TP06342	Hex. Bolt 4 X 10	1	
16	TQ02002	O-Ring P-60 PUR	1	
17	TQ02003	Back-up Ring P-60 T2	1	
18	TQ01999	Bushing	1	
19	TQ02000	O-Ring P-45 PUR	1	
20	TQ02001	Back-up Ring P-45 T2	1	
22	TQ02054	Set Screw	2	
23	TQ02055	Copper Packing 10 X 5	2	
24	TQ02004	Hex. Socket Set Screw 8 X 16	1	
26	TQ01050	Small Hex. Nut Type 3 M8	2	
27	TQ02304	Hex. Socket Set Screw with Cone Point 8 X 20	2	
28	CP28124	O-Ring P-45	1	
29	TQ02043	Stripper	1	
30	TJ06676	Punch 22	1	
31	TA99036	Lock Nut Ass'y	1 set	
32	(TP07009)	Urethane Washer 31 X 40 X 3.1	1	
33	TJ06677	Die 22	1	
34	TP05136	Drive Rivet No. 2 X 4.8	4	
35	TQ03224	Plate Model Number (HS07)	1	
35	TQ03226	Plate Model Number (HS11)	1	
37	TP04154	Hex. Socket Head Cap Screw 4 X 16	4	
38	TB02463	Head Cover Ass'y	1 set	
39	(TQ03223)	Label – Warning	1	
40	(TQ03222)	Label – Switch	1	
41	TQ02027	Lock Ring	1	
42	TQ02197	Folding Washer	1	
43	TQ02051	Spacer	2	
44	TB02387	Switch Plate Ass'y	1 set	
45	(TB01924)	Switch Plate Sub Ass'y	1 set	

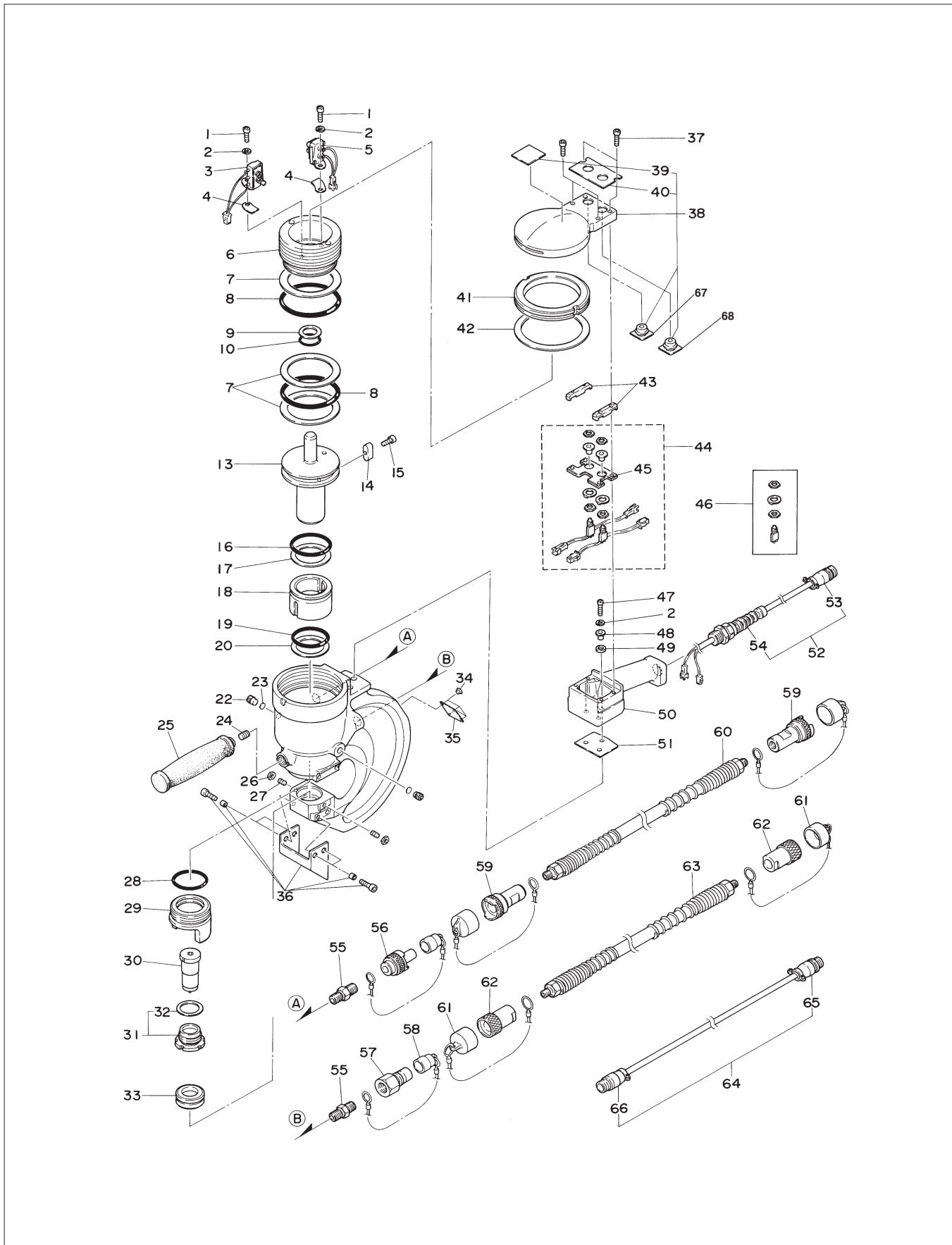
No.	Part No.	Part Name	Q'ty	Price
46	(TQ06476)	Push Button Switch MB2011	2	
47	TP10953	Hex. Socket Head Cap Screw 6 X 18	3	
48	TQ02044	Distance Collar M6	3	
49	TQ02045	Washer 10 X 18 X 2	3	
50	TQ02038	Grip	1	
51	TQ02046	Grip Sheet	1	
52	TB02389	Metal Cord	1 set	
53	(TQ02036)	Metal Cord Plug	1	
54	(TQ02219)	Cord Stopper BS-9	1	
55	TQ02142	Nipple R3/8 X R3/8	2	
56	CA94119	700R-3P Cupla w/Cap	1 set	
57	CA82240	450B-3P Ass'y	1 set	
58	CB09421	450B-3P-D Ass'y	1 set	

## ACCESSORIES

25	TA92089	Sub Handle Ass'y	1 set	
36	TB02230	Chip Guard Ass'y	1 set	
59	CA94118	700R-3S Cupla w/Cap	2 sets	
60	TP05184	Ultra-high Pressure Hose	1	
61	CA96464	Dust Cap	2 sets	
62	CB00126	450B-3S Ass'y	2 sets	
63	TQ02569	High Pressure Hose	1	
64	TB02390	Switch Cord Ass'y	1 set	
65	(TQ02568)	Metal Straight Plug	1	
66	(TQ02567)	Metal Straight Socket	1	
67	TP10878	Red Cap (Stop Button Cover)	1	
68	TP10877	Black Cap (Start Button Cover)	1	
	TB02142	Hook Clamp Ass'y	1	
	TP01939	Hex. Wrench Key 4	1	
	TP04004	Hex. Wrench Key 5	1	
	TP06012	Spanner	1	
	TP17991	Spanner 12	1	
	TP10198	Tool Box 285 X 125 X 62	1	
	TQ03228	Instruction Manual	1	



# SELFER ACE HS07-1624/HS11-1624 ASSEMBLY



# SELFER ACE HS07-1624/HS11-1624 PARTS LIST

The parts numbers with ( ) are included in the Ass'y parts written above them.

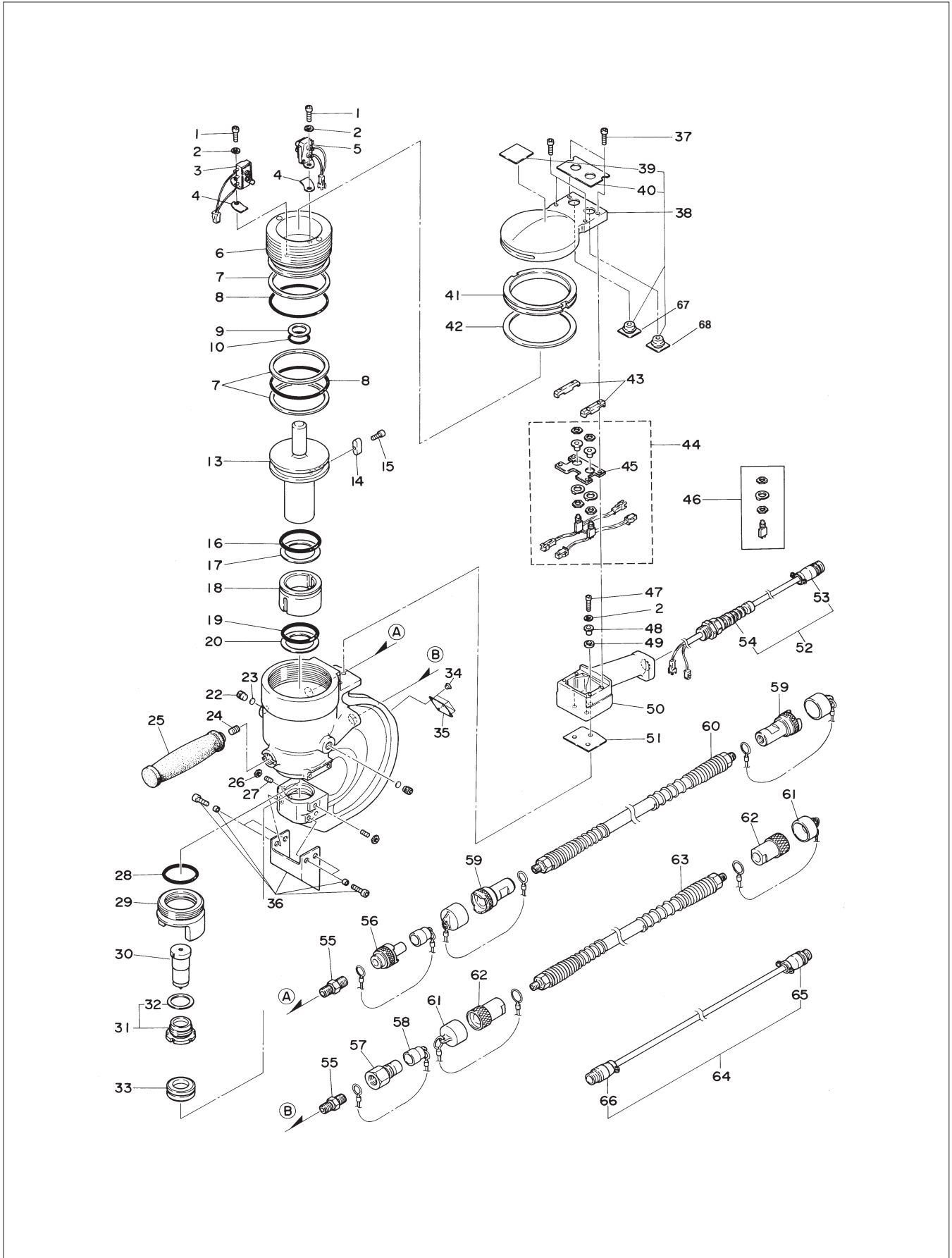
No.	Part No.	Part Name	Q'ty	Price
1	TP01644	Hex. Socket Head Bolt 6 X 12	2	
2	TP00629	Spring Washer M6	5	
3	TB02278	Limit Switch Lower Ass'y	1 set	
4	(TQ02047)	Shim 1.0 (for Adjustment)		
4	(TQ02048)	Shim 0.5		
5	TB02277	Limit Switch Upper End Ass'y	1 set	
6	TQ02014	Cap	1	
7	TQ02015	Back-up Ring P-85 T3	3	
8	TQ02011	O-Ring P-85 PUR	2	
9	CP23977	Back-up Ring P-20 T2	1	
10	TQ02016	O-Ring P-20	1	
13	TQ02005	Ram	1	
14	TQ02006	Parallel Key 10 X 8 X 22	1	
15	TP06342	Hex. Bolt 4 X 10	1	
16	TQ02002	O-Ring P-60 PUR	1	
17	TQ02003	Back-up Ring P-60 T2	1	
18	TQ01999	Bushing	1	
19	TQ02000	O-Ring P-45 PUR	1	
20	TQ02001	Back-up Ring P-45 T2	1	
22	TQ02054	Set Screw	2	
23	TQ02055	Copper Packing 10 X 5	2	
24	TQ02004	Hex. Socket Set Screw 8 X 16	1	
26	TQ01050	Small Hex. Nut Type 3 M8	2	
27	TQ02304	Hex. Socket Set Screw with Cone Point 8 X 20	2	
28	CP28124	O-Ring P-45	1	
29	TQ02043	Stripper	1	
30	TJ06676	Punch 22	1	
31	TA99036	Lock Nut Ass'y	1 set	
32	(TP07009)	Urethane Washer 31 X 40 X 3.1	1	
33	TJ06677	Die 22	1	
34	TP05136	Drive Rivet No. 2 X 4.8	4	
35	TQ03224	Plate Model Number (HS07)	1	
35	TQ03226	Plate Model Number (HS11)	1	
37	TP04154	Hex. Socket Head Cap Screw 4 X 16	4	
38	TB02463	Head Cover Ass'y	1 set	
39	(TQ03223)	Label – Warning	1	
40	(TQ03222)	Label – Switch	1	
41	TQ02027	Lock Ring	1	
42	TQ02197	Folding Washer	1	
43	TQ02051	Spacer	2	
44	TB02387	Switch Plate Ass'y	1 set	
45	(TB01924)	Switch Plate Sub Ass'y	1 set	

No.	Part No.	Part Name	Q'ty	Price
46	(TQ06476)	Push Button Switch MB2011	2	
47	TP10953	Hex. Socket Head Cap Screw 6 X 18	3	
48	TQ02044	Distance Collar M6	3	
49	TQ02045	Washer 10 X 18 X 2	3	
50	TQ02038	Grip	1	
51	TQ02046	Grip Sheet	1	
52	TB02389	Metal Cord	1 set	
53	(TQ02036)	Metal Cord Plug	1	
54	(TQ02219)	Cord Stopper BS-9	1	
55	TQ02142	Nipple R3/8 X R3/8	2	
56	CA94119	700R-3P Cupla w/Cap	1 set	
57	CA82240	450B-3P Ass'y	1 set	
58	CB09421	450B-3P-D Ass'y	1 set	

## ACCESSORIES

25	TA92089	Sub Handle Ass'y	1 set	
36	TB02230	Chip Guard Ass'y	1 set	
59	CA94118	700R-3S Cupla w/Cap	2 sets	
60	TP05184	Ultra-high Pressure Hose	1	
61	CA96464	Dust Cap	2 sets	
62	CB00126	450B-3S Ass'y	2 sets	
63	TQ02569	High Pressure Hose	1	
64	TB02390	Switch Cord Ass'y	1 set	
65	(TQ02568)	Metal Straight Plug	1	
66	(TQ02567)	Metal Straight Socket	1	
67	TP10878	Red Cap (Stop Button Cover)	1	
68	TP10877	Black Cap (Start Button Cover)	1	
	TB02142	Hook Clamp Ass'y	1	
	TP01939	Hex. Wrench Key 4	1	
	TP04004	Hex. Wrench Key 5	1	
	TP06012	Spanner	1	
	TP17991	Spanner 12	1	
	TP10198	Tool Box 285 X 125 X 62	1	
	TQ03228	Instruction Manual	1	

# SELFER ACE HS06-1322 ASSEMBLY



# SELFER ACE HS06-1322 PARTS LIST

The parts numbers with ( ) are included in the Ass'y parts written above them.

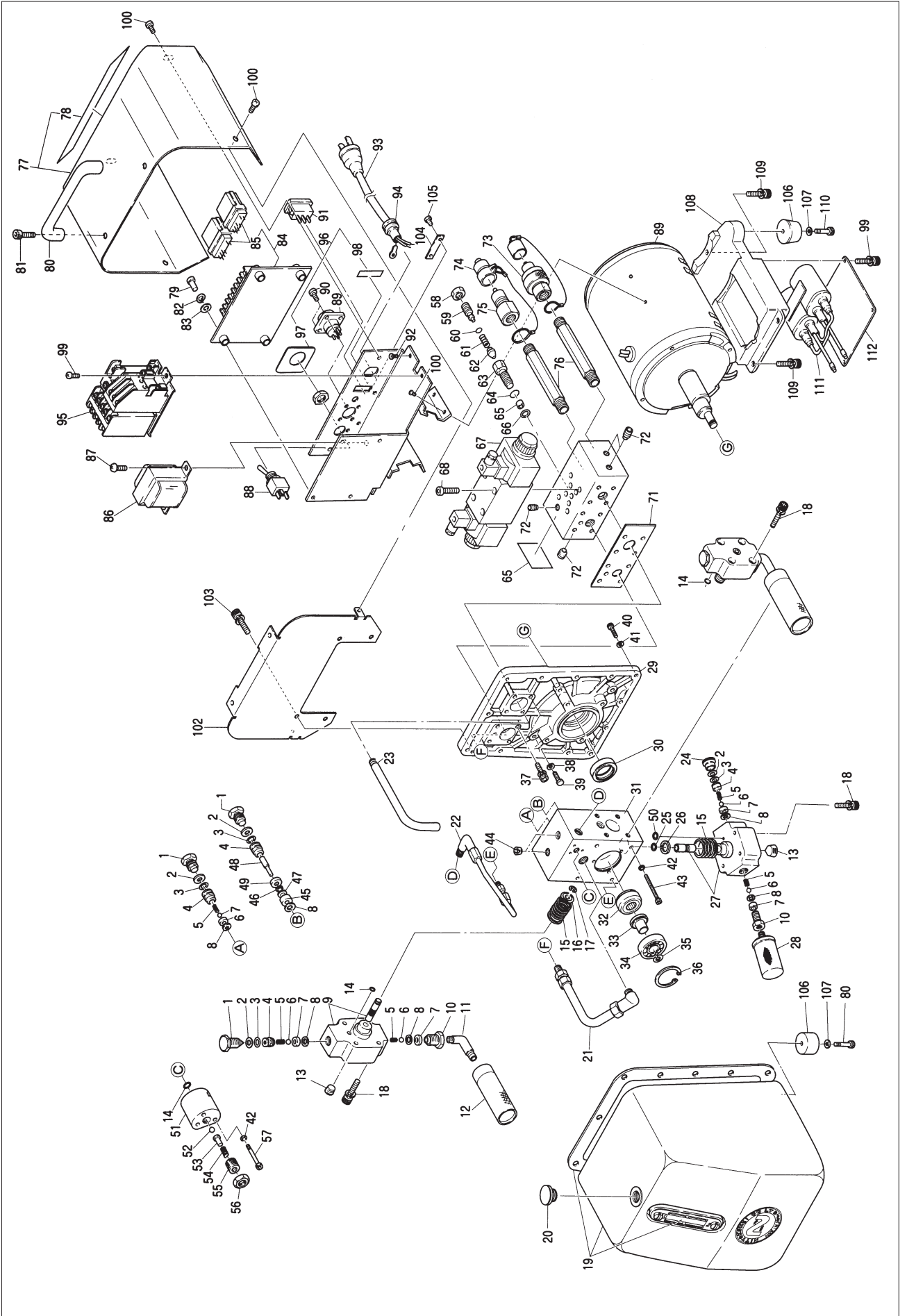
No.	Part No.	Part Name	Q'ty	Price
1	TP01644	Hex. Socket Head Bolt 6 X 12	2	
2	TP00629	Spring Washer M6	5	
3	TB02286	Limit Switch Lower End Ass'y	1 set	
4	(TQ02047)	Shim 1.0 (for Adjustment)		
	(TQ02048)	Shim 0.5		
5	TB02277	Limit Switch Upper End Ass'y	1 set	
6	TQ02067	Cap	1	
7	TQ02068	Back-up Ring P-75 T3	3	
8	TQ02065	O-Ring P-75 PUR	2	
9	CP23977	Back-up Ring P-20 T2	1	
10	TQ02016	O-Ring P-20	1	
13	TQ02064	Ram	1	
14	TQ02006	Parallel Key 10 X 8 X 22	1	
15	TP06342	Hex. Bolt 4 X 10	1	
16	TQ02002	O-Ring P-60 PUR	1	
17	TQ02003	Back-up Ring P-60 T2	1	
18	TQ01999	Bushing	1	
19	TQ02000	O-Ring P-45 PUR	1	
20	TQ02001	Back-up Ring P-45 T2	1	
22	TQ02054	Set Screw	2	
23	TQ02055	Copper Packing 10 X 5	2	
24	TQ02004	Hex. Socket Set Screw 8 X 16	1	
26	TQ01050	Small Hex. Nut Type 3 M8	2	
27	TQ02304	Hex. Socket Set Screw with Cone Point 8 X 20	2	
28	CP28124	O-Ring P-45	1	
29	TQ02073	Stripper	1	
30	TJ06676	Punch 22	1	
31	TA99036	Lock Nut Ass'y	1 set	
32	(TP07009)	Urethane Washer 31 X 40 X 3.1	1	
33	TJ06677	Die 22	1	
34	TP05136	Drive Rivet No.2 X 4.8	4	
35	TQ03225	Plate Model Number	1	
37	TP04154	Hex. Socket Head Cap Screw 4 X 16	4	
38	TB02468	Head Cover Ass'y	1 set	
39	(TQ03223)	Label Warning	1	
40	(TQ03222)	Label Switch	1	
41	TQ02070	Lock Ring	1	
42	TQ02205	Folding Washer	1	
43	TQ02051	Spacer	2	
44	TB02387	Switch Plate Ass'y	1 set	

No.	Part No.	Part Name	Q'ty	Price
45	(TB01924)	Switch Plate Sub Ass'y	1 set	
46	(TQ06476)	Push Button Switch MB2011	2	
47	TP10953	Hex. Socket Head Cap Screw 6 X 18	3	
48	TQ02044	Distance Collar M6	3	
49	TQ02045	Washer 10 X 18 X 2	3	
50	TQ02038	Grip	1	
51	TQ02046	Grip Sheet	1	
52	TB02389	Metal Cord Ass'y	1 set	
53	(TQ02036)	Metal Cord Relay Plug	1	
54	(TQ02219)	Cord Stopper BS-9	1	
55	TQ02142	Nipple R3/8 X R3/8	2	
56	CA94119	700R-3P Cupla w/Cap	1 set	
57	CA82240	450B-3P Ass'y	1 set	
58	CB09421	450B-3P-D Ass'y	1 set	

## ACCESSORIES

No.	Part No.	Part Name	Q'ty	Price
25	TA92089	Sub Handle Ass'y	1 set	
36	TB02230	Chip Guard Ass'y	1 set	
59	CA94118	700R-3S Cupla w/Cap	2 sets	
60	TP05184	Ultra-high Pressure Hose	1	
61	CA96464	Dust Cap	2 sets	
62	CB00126	450B-3S Ass'y	2 sets	
63	TQ02569	High Pressure Hose	1	
64	TB02390	Switch Cord Ass'y	1 set	
65	(TQ02568)	Metal Straight Plug	1	
66	(TQ02567)	Metal Straight Socket	1	
67	TP10878	Red Cap (Stop Button Cover)	1	
68	TP10877	Black Cap (Start Button Cover)	1	
	TP01939	Hex. Wrench Key 4	1	
	TP04004	Hex. Wrench Key 5	1	
	TP06012	Spanner	1	
	TP17991	Spanner 12	1	
	TP10198	Tool Box 285 X 125 X 62	1	
	TQ03228	Instruction Manual	1	
	TB02142	Hook Clamp Ass'y	1	
	TB02141	Foot Switch Relay Box Ass'y	1	

# PUMP HPD-05 ASSEMBLY AND PARTS LIST



The part numbers with ( ) are included in the Assy parts written above them.

No.	Part No.	Part Name	Q'ty	Price
1	TP05874	Check Set Plug	4	
2	TP05873	Back-up Ring P-10	5	
3	TP05872	O-Ring P-10	5	
4	TP05871	Delivery Valve	5	
5	TP05870	Spring 0.3 X 5 X 7	2	
6	CP00800	Ball 1/4	7	
7	TP05869	Valve Seat	7	
8	TP05868	Packing	8	
9	TA9A586	Cylinder Piston Sub Assy	2 sets	
10	TP05875	Suction Valve	3	
11	TP05876	Elbow PT1/8 X PF1/4	2	
12	TP05877	Filter	2	
13	TP05863	Hex. Screw PT1/4	3	
14	TP05878	O-Ring P-8	3	
15	TP05865	Piston Spring	3	
16	TP05866	Spring Seat	2	
17	TP05867	Retaining Ring E-64	2	
18	TQ03341	Hex. Bolt 6 X 30	12	
19	TA97817	Oil Tank Assy	1 set	
21	TA92456	Stopper Bolt	1 set	
22	TA94198	Steel Pipe Assy	1 set	
23	TQ03234	Drain Pipe	1	
24	TP07963	Check Set Plug	1	
25	TP07962	Retaining Ring WR-11	1	
26	TP07961	Spring Seat	1	
27	TA9A603	L Cylinder Piston Sub Assy	1 set	
28	TP07964	Suction Filter	1	
29	TQ03233	Bracket	1	
30	TP05856	Oil Seal S25 X 38 X 8	1	
31	TQ03232	Pump Body	1	
32	TP09671	Track Follower	1	
33	TP09672	Distance Collar	1	
34	TP05978	Ball Bearing	1	
35	TP09673	E Ring 10	1	
36	CP01086	Internal Retaining Ring C	1	
37	TQ03340	Hex. Bolt 6 X 25	8	
38	TP05853	Seal Washer W5	4	
39	TP13247	Hex. Bolt 5 X 22	4	
40	TP02863	Hex. Bolt 5 X 20	13	
41	TP05950	Copper Washer 5.5 X 8.5 X 1	13	
42	TP00513	Spring Washer M5	7	
43	TP05857	Hex. Bolt 5 X 70	4	
44	TP06597	Hex. Screw PT1/8	2	
45	TP06616	Valve Sleeve	1	
46	CQ15608	O-Ring P-6	1	

No.	Part No.	Part Name	Q'ty	Price
47	TP06618	Back-up Ring P-6	1	
48	TP06619	Spool	1	
49	TP06620	Valve Sleeve Plate	1	
50	TP05949	O-Ring P-7	1	
51	TP06632	Unloader Valve	1	
52	TP06633	Ball 5/16	1	
53	TP07966	Ball Retainer	1	
54	TP07967	Spring 7 X 25.2 X 2	1	
55	TQ03407	Hex. Bolt 12 X 15	1	
56	TP05422	Hex. Nut M12	1	
57	TP06637	Hex. Bolt 5 X 40	3	
58	TP14009	Hex. Nut M12 X 1	1	
59	TP14279	Adjust Screw	1	
60	TP11241	O-Ring P-7	1	
61	TP14269	Spring 7 X 20 X 2	1	
62	TA98852	Relief Valve Sub Assy	1	
63	TP14267	Relief Valve Body	1	
64	TP12010	O-Ring P-14	1	
65	TP14266	Relief Valve Seat	1	
66	TP14265	Copper Washer 6 X 16 X 0.8	1	
67	TQ03463	Solenoid Valve (115V)	1	
68	TP06217	Hex. Bolt 6 X 25	4	
69	TQ03249	Manifold	1	
70	TQ02990	Label Caution Relief Valve	1	
71	TQ03248	Gasket	1	
72	TP06597	Hex. Screw PT1/8	4	
73	CA94119	700R-3P Cupla w/Cap	1 set	
74	CA82240	450B-3P Assy - Seifer/Pump	1 set	
75	CB09421	450B-3P-D Assy	1 set	
76	TQ03238	Cupla Joint	2	
77	TB02491	Cover Assy (115V)	1 set	
77	TB02498	Cover Assy (230V)	1 set	
78	(TQ03237)	Label Warning (115V)	1	
78	(TQ03247)	Label Warning (230V)	1	
79	LP30251	+ Screw 4 X 16	4	
82	TP04234	Washer M4	4	
83	LP30299	Washer M4	4	
84	TB02393	Print Board	1set	
85	(TQ02621)	Relay G2R-2-S	2	
86	TQ03251	Transformer 115V/20V	1	
86	TQ03252	Transformer 230V/20V	1	
87	LQ00378	Pan Head Screw 3X6	2	
88	TQ03131	Switch ET105D12	1	
89	TB01467	Metal Consent Receptacle	1set	
90	TP00056	+ Screw 3 X 6	4	
91	TQ02893	Snap-in Switch LLA25A2	1	

No.	Part No.	Part Name	Q'ty	Price
92	LP08489	+ Screw 4 X 6	1	
93	TA9A758	Cable Assy (115V)	1set	
93	TB01207	Cable Assy (230V)	1set	
94	TP01757	Cord Stopper	1	
95	TA98692	Magnet Switch Assy (115V)	1set	
95	TA98692	Magnet Switch Assy (230V)	1set	
96	TB02490	Switch Plate Sub Assy	1set	
97	(TQ03243)	Label - Change Switch	1	
98	(TQ03244)	Label - Power Supply	1	
99	TQ03193	Pan Head Screw 4 X 6	6	
100	LQ00190	+ Pan Head Screw 4 X 8	8	
101	TA97964	Motor Assy (115V)	1set	
101	TA97968	Motor Assy (230V)	1set	
102	TQ03250	Partition	1	
103	TQ03327	Hex. Bolt 5 X 10	4	
104	TP04769	Plate Serial Number	1	
105	TP05136	Drive Rivet No.2 X4.8	2	
106	TP05925	Rubber Foot	4	
107	TP05926	Washer 6.5 X 10 X 1	4	
108	TQ01321	Condenser Box	1	
109	TQ03329	Hex. Bolt 5 X 15	3	
110	TP07118	Hex. Bolt 6 X 16	2	
111	TA98768	Condenser Assy	1set	
112	TQ01322	Condenser Cover	1	

**ACCESSORIES**

No.	Part No.	Part Name	Q'ty	Price
20	TP05929	Oil Cap	1	
80	TQ03239	Hand Grip	1	
81	TP03086	Hex. Bolt 6 X 20	2	
	TP03249	Hex. Wrench Key 8	1	
	TP04004	Hex. Wrench Key 5	1	
	TQ03246	Instruction Manual	1	
	TA92729	Auxiliary Oil Can Assy	1	