

S A N D I N G

# PNEUMATIC BELT SANDER BELTON

New ergonomic design

Model **B-10N, B-20N, and B-30N**

Redesigned for operators convenience with improved sanding and polishing efficiency.

Rubber grips prevent cold hands.

The most versatile belt sander ever developed for trimming, chamfering, bead grinding, and finish sanding.



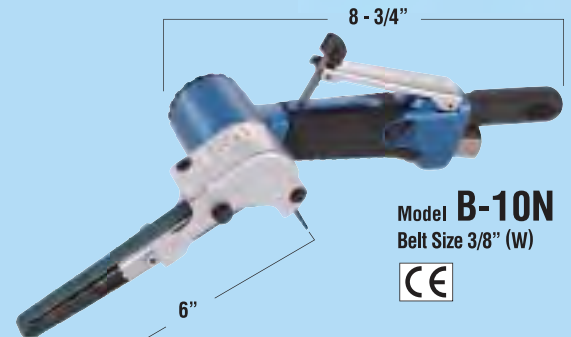
JQA-EM4057  
NITTO KOHKI Co., LTD.  
Headquarters  
Research Center



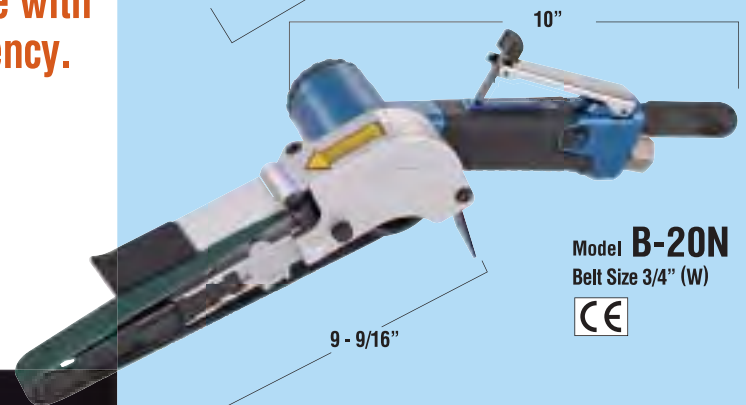
JQA-2042  
NITTO KOHKI Co., LTD.  
Machine Tools Division

Cat.No. **Tk110**

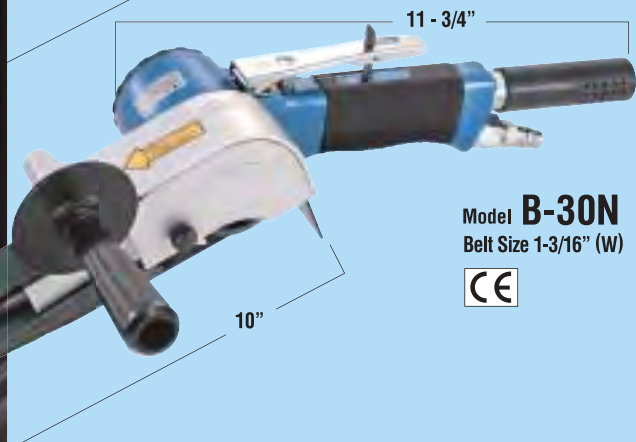
**NEW**



Model **B-10N**  
Belt Size 3/8" (W)



Model **B-20N**  
Belt Size 3/4" (W)



Model **B-30N**  
Belt Size 1-3/16" (W)



Suitable for sanding jobs in narrow spaces, recessed corners or on curved surfaces.

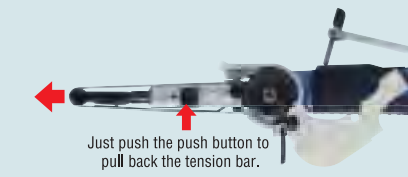
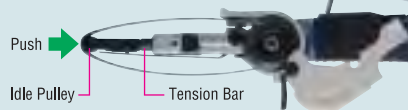


## Belt change is quick and easy!

Belt change can be made easily by pushing the idle pulley against the housing to lock the tension bar.

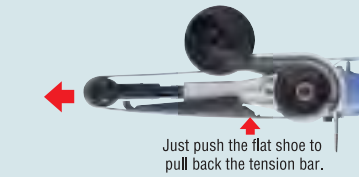
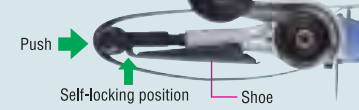
### For B-10N & B-20N

Push the idle pulley into self-locking position to loosen the belt.



### For B-30N

Push the idle pulley into self-locking position to loosen the belt.



## Belt speed adjustment

Belt speed can be easily adjusted by turning the adjust lever or adjust valve without a tool.

### For B-10N & B-20N



Adjust Lever

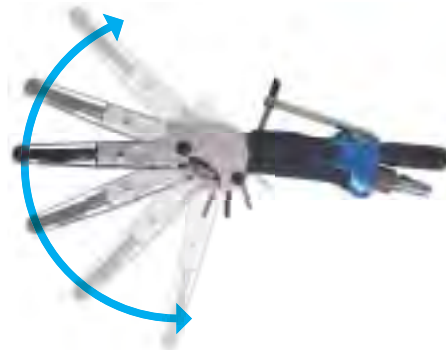
### For B-30N



Adjust Valve

## Guard position is adjustable

Guard angle can be changed freely in accordance with the working position and shape of the workpiece.



## Specifications

| Model                     |      | B-10N   | B-20N   | B-30N   |
|---------------------------|------|---|---|---|
| Rated Air Pressure        | psi  | 85  | 85  | 85  |
| Air Consumption (No load) | cfm  | 14.2  | 18.4  | 24.0  |
| Motor Free Speed          | rpm  | 17,000  | 17,000  | 14,000  |
| Belt Speed                | fpm  | 3,675   | 8,596   | 7,087   |
| Belt Size                 |      | 3/8" x 13", 10 x 330mm  | 3/4" x 20-1/2", 20 x 520mm  | 1-3/16" x 21-1/4", 30 x 540mm   |
| Hose Size                 | inch | 1/4   | 1/4   | 1/4   |
| Mass (Weight)             | lbs  | 1.5   | 2.6   | 4.8   |
| Standard Accessories      |      | <ul style="list-style-type: none"> <li>• #60, #80, #100, #120 Abrasive Belt - 1 ea.</li> <li>• 2mm Allen Wrench</li> <li>• 4mm Allen Wrench</li> <li>• Threaded Adapter PT 1/4 x NPT 1/4</li> </ul> | <ul style="list-style-type: none"> <li>• #60, #80, #100, #120 Abrasive Belt - 1 ea.</li> <li>• 2.5mm Allen Wrench</li> <li>• 4mm Allen Wrench</li> <li>• 5mm Allen Wrench</li> <li>• Threaded Adapter PT 1/4 x NPT 1/4</li> <li>• Convex Shoe</li> <li>• Finger Pad Assembly</li> </ul> | <ul style="list-style-type: none"> <li>• #60, #80, #100, #120 Abrasive Belt - 1 ea.</li> <li>• 2mm Allen Wrench</li> <li>• 4mm Allen Wrench</li> <li>• Threaded Adapter PT 1/4 x NPT 1/4</li> </ul> |

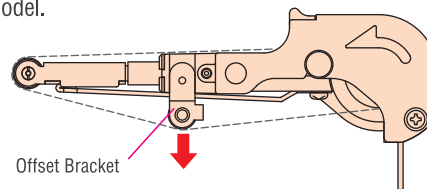
## Optional Parts

### Offset Bracket Assembly for B-10N, B-20N, and B-30N

An optional offset bracket assembly is available for each model.

#### Bracket 6 Ass'y for 1/4" x 13" or 6 x 330mm Belt (B-10N)

| Part #  | Description                 | Q'ty  |
|---------|-----------------------------|-------|
| TB07283 | Bracket 6 Assembly          | 1 set |
| TQ10942 | Shoe 6 for 1/4" or 6mm belt | 1 pc. |



\*Curved surface sanding is possible by using the offset bracket.

#### Offset Bracket Assembly

| Model | Part #  |
|-------|---------|
| B-10N | TB05539 |
| B-20N | TB07109 |
| B-30N | TB08150 |

### Aluminum Oxide Sanding Belts for Belton Sanders

#### Sanding Belt for Bracket 6 Ass'y with B-10N

| Part #  | Belt Grit | Q'ty   |
|---------|-----------|--------|
| TP14646 | #60       | 20 pcs |
| TP14481 | #80       | 20 pcs |
| TP14647 | #100      | 20 pcs |
| TP14482 | #120      | 20 pcs |
| TP14648 | #180      | 20 pcs |

#### Sanding Belt for B-10N

| Part #  | Belt Grit | Q'ty   |
|---------|-----------|--------|
| @U40001 | #40       | 20 pcs |
| TP12438 | #60       | 20 pcs |
| TP12439 | #80       | 20 pcs |
| TP12440 | #100      | 20 pcs |
| TP12441 | #120      | 20 pcs |
| @U40002 | #150      | 20 pcs |
| TP12543 | #180      | 20 pcs |

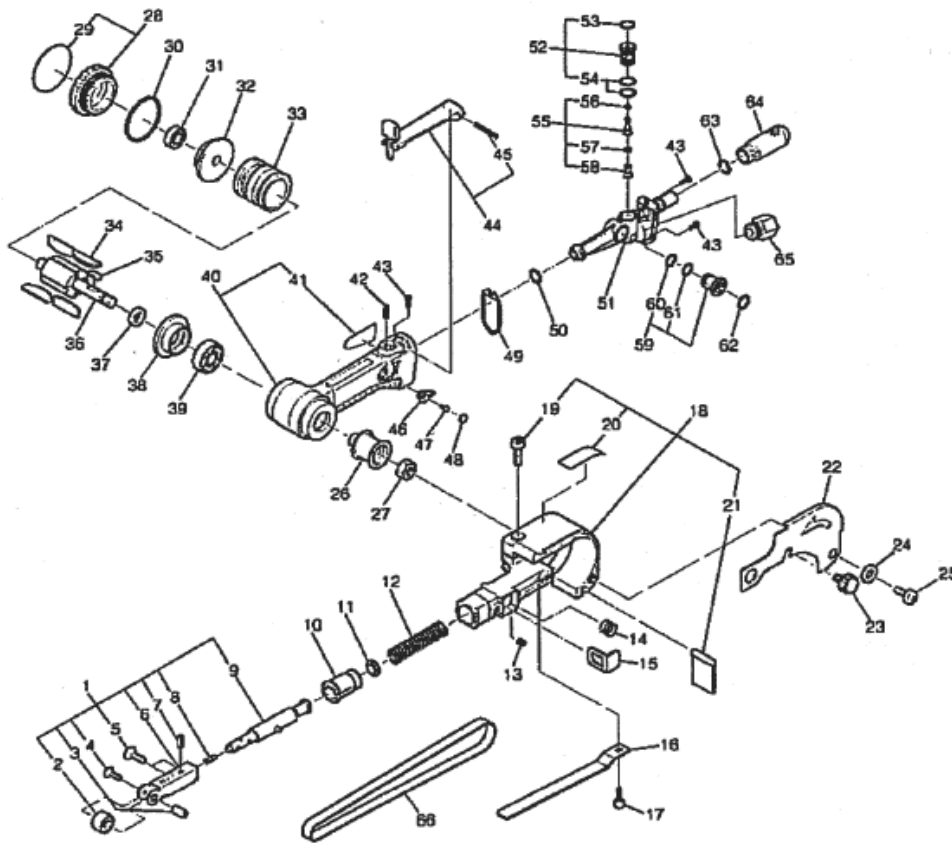
#### Sanding Belt for B-20N

| Part #  | Belt Grit | Q'ty   |
|---------|-----------|--------|
| TP01941 | #40       | 20 pcs |
| TP01936 | #60       | 20 pcs |
| TP01942 | #80       | 20 pcs |
| TP01943 | #100      | 20 pcs |
| TP01944 | #120      | 20 pcs |
| @U40004 | #150      | 20 pcs |
| TP02002 | #180      | 20 pcs |

#### Sanding Belt for B-30N

| Part #  | Belt Grit | Q'ty   |
|---------|-----------|--------|
| TP04074 | #40       | 20 pcs |
| TP04084 | #60       | 20 pcs |
| TP04085 | #80       | 20 pcs |
| TP04086 | #100      | 20 pcs |
| TP04078 | #120      | 20 pcs |
| @U40006 | #150      | 20 pcs |
| TP04511 | #180      | 20 pcs |

# BELTON B-10N ASSEMBLY AND PARTS LIST



The part numbers with ( ) are included in the Ass'y parts written above them.

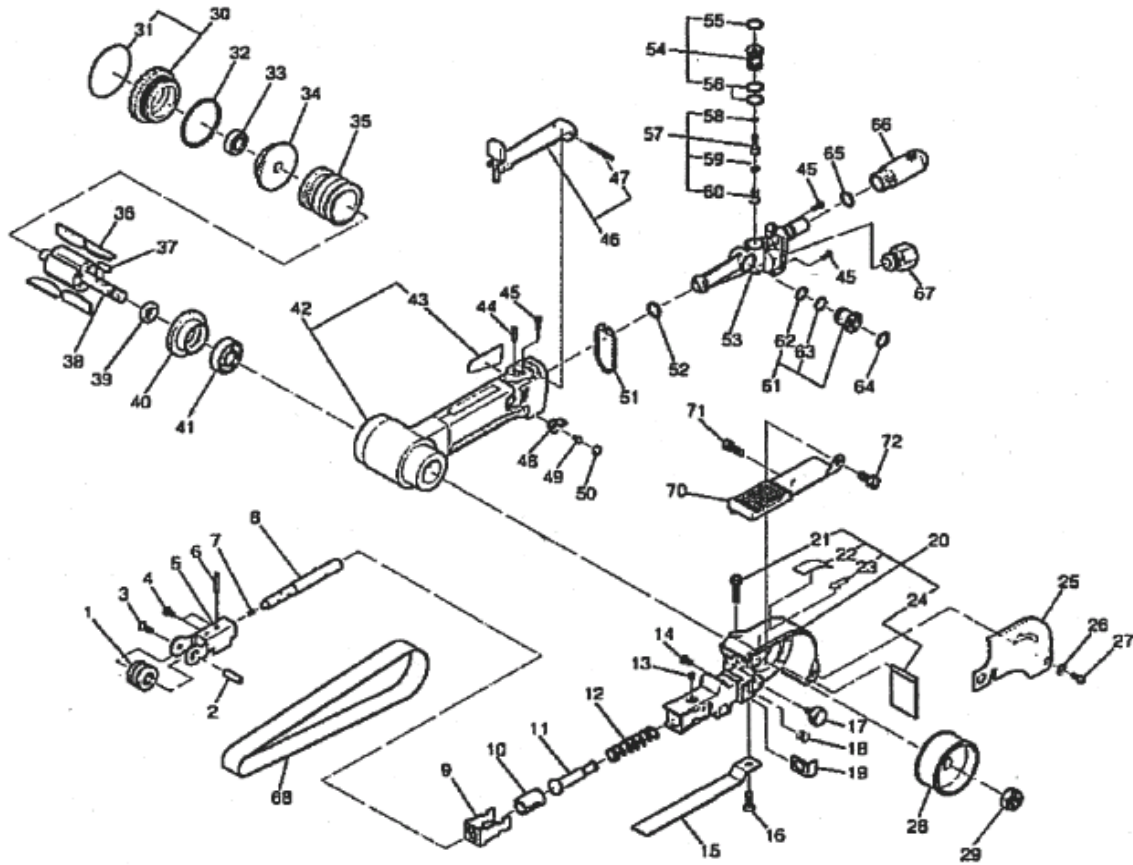
| No. | Part No.  | Part Name                                 | Q'ty |
|-----|-----------|---|------|
| 1   | TB07233   | Bracket 10 Ass'y                          | 1set |
| 2   | TA99155   | Idle Pulley 10 Sub Ass'y                  | 1set |
| 3   | TP12431   | Idle Pulley Shaft 10                      | 1    |
| 4   | TP14455   | Countersunk Head Screw 2 x 5              | 1    |
| 5   | TQ10725   | Hex.Socket Countersunk Head Set Screw 3x6 | 2    |
| 6   | TB07898   | Bracket 10 Sub Ass'y A                    | 1set |
| 7   | TP14798   | Spring Pin 3x10 AW                        | 1    |
| 8   | TQ10526   | Tension Bar Spring                        | 1    |
| 9   | TB07236   | Tension Bar Shaft Ass'y                   | 1set |
| 10  | TQ07201   | Guard Insert                              | 1    |
| 11  | TQ10934   | Stopper                                   | 1    |
| 12  | TQ10724   | Spring 1.2x8x4.3x34                       | 1    |
| 13  | TP15643   | Hex.Socket Set Screw 4x4 with Flat Point  | 1    |
| 14  | TQ07218   | Spring 0.35x7.5x7                         | 1    |
| 15  | TQ10587   | Push Button                               | 1    |
| 16  | TQ10709   | Shoe 10                                   | 1    |
| 17  | TP02618   | Pan Head Screw 4x8                        | 1    |
| 18  | TB07294   | Guard Sub Ass'y B                         | 1set |
| 19  | (TP08646) | Hex.Socket Head Cap Screw 5x14            | 1    |
| 20  | (TP16361) | Label Caution                             | 1    |
| 21  | (TQ10710) | Dust Cover                                | 1    |
| 22  | TQ10711   | Belt Cover                                | 1    |
| 23  | TQ10712   | Decorative Screw                          | 1    |
| 24  | TP00144   | Washer M4                                 | 1    |
| 25  | TP12819   | Pan Head Screw 4x6                        | 1    |
| 26  | TP14916   | Drive Pulley                              | 1    |
| 27  | TP01924   | Hex.Nut M6                                | 1    |
| 28  | TB07951   | Cap Ass'y                                 | 1set |
| 29  | (TQ11823) | Label Model B-10N                         | 1    |
| 30  | TP05531   | O-ring S-36                               | 1    |
| 31  | TP06386   | Ball Bearing 607ZZ                        | 1    |
| 32  | TP12414   | End Plate A                               | 1    |
| 33  | TP12415   | Cylinder                                  | 1    |
| 34  | TA9A364   | Blade Ass'y (4pcs/set)                    | 1set |
| 35  | TP10130   | Parallel Key Both Ends Round 3x3x10       | 1    |
| 36  | TP12416   | Rotor                                     | 1    |
| 37  | TP06322   | Spacer 8x11x3                             | 1    |

| No. | Part No.  | Part Name            | Q'ty |
|-----|-----------|----------------------|------|
| 38  | TP12418   | End Plate B          | 1    |
| 39  | TP12419   | Ball Bearing 628ZZ   | 1    |
| 40  | TB07953   | Housing Sub Ass'y    | 1set |
| 41  | (TQ11822) | Label Warning        | 1    |
| 42  | TQ11559   | Parallel Pin 3x14    | 1    |
| 43  | TQ11560   | Tapping Screw 3x8    | 3    |
| 44  | TB07709   | Lever Ass'y          | 1set |
| 45  | (TP00460) | Spring Pin 3x22AW    | 1    |
| 46  | TQ11554   | Adjust Lever         | 1    |
| 47  | TP08598   | Pan Head Screw 3x5   | 1    |
| 48  | TQ11626   | Lever Cap            | 1    |
| 49  | TQ11555   | Packing              | 1    |
| 50  | CQ14480   | O-ring JASO-1010     | 1    |
| 51  | TB08078   | Air Inlet Sub Ass'y  | 1set |
| 52  | TB07938   | Throttle Valve Ass'y | 1set |
| 53  | (TP14604) | O-ring S-10          | 1    |
| 54  | (TP12569) | O-ring S-11.2        | 2    |
| 55  | TB07708   | Valve Stem Ass'y     | 1set |
| 56  | (TQ10395) | O-ring SS-2.5        | 1    |
| 57  | (TP11994) | O-ring P-4           | 1    |
| 58  | (TP03769) | Valve Spring         | 1    |
| 59  | TB07937   | Adjust Valve Ass'y   | 1set |
| 60  | (CQ25954) | O-ring AS568-012     | 1    |
| 61  | (CQ05860) | O-ring AS568-013     | 1    |
| 62  | (CP24969) | O-ring JASO-1011     | 1    |
| 63  | TP07031   | O-ring S-8           | 1    |
| 64  | TB08079   | Silencer Sub Assy    | 1set |
| 65  | TP00857   | Bushing M16xPT 1/4   | 1    |

### Standard Accessories

| No. | Part No. | Part Name                   | Q'ty |
|-----|----------|-----------------------------|------|
|     | TP01939  | Hex.Socket Screw Key 4      | 1    |
|     | TP13892  | Hex.Socket Screw Key 2      | 1    |
| 66  | TP16597  | Abrasive Belt Z75 #60 x 10  | 2    |
|     | TB00076  | Abrasive Belt Z75 #80 x 10  | 1    |
|     | TB00077  | Abrasive Belt Z75 #100 x 10 | 1    |
|     | TB00247  | Abrasive Belt Z75 #120 x 10 | 1    |
|     | TP02236  | Bushing PT1/4 x NPT1/4      | 1    |
|     | TQ11700  | Instruction Manual          | 1    |

# BELTON B-20N ASSEMBLY AND PARTS LIST



The part numbers with ( ) are included in the Ass'y parts written above them.

| No. | Part No.  | Part Name                                | Q'ty |
|-----|-----------|--|------|
| 1   | TA99885   | Idle Pulley A Ass'y                      | 1set |
| 2   | TQ11616   | Idle Pulley Shaft                        | 1    |
| 3   | TP16219   | Hex.Countersunk Head Screw 4x10          | 1    |
| 4   | TQ11400   | Hex.Socket Button Head Screw 4x8         | 2    |
| 5   | TB07747   | Bracket Sub Ass'y A                      | 1set |
| 6   | TP03544   | Spring Pin 6x16 AW                       | 1    |
| 7   | TQ10526   | Tension Bar Spring                       | 1    |
| 8   | TB07777   | Tension Bar Shaft Ass'y                  | 1set |
| 9   | TQ11610   | Stopper                                  | 1    |
| 10  | TQ11609   | Guard Insert                             | 1    |
| 11  | TQ11620   | Push Rod                                 | 1    |
| 12  | TQ11621   | Spring 1.6x11x45                         | 1    |
| 13  | TP15643   | Hex.Socket Set Screw 4x4 with Flat Point | 1    |
| 14  | TQ11659   | Hex.Socket Button Head Screw 3x6         | 1    |
| 15  | TQ11611   | Shoe                                     | 1    |
| 16  | TQ11660   | Pan Head Screw 5x6                       | 1    |
| 17  | TQ10712   | Decorative Screw                         | 1    |
| 18  | TQ07218   | Spring 0.35x7.5x7                        | 1    |
| 19  | TQ11622   | Push Button                              | 1    |
| 20  | TB08068   | Guard Sub Ass'y B                        | 1set |
| 21  | (TP04532) | Hex.Socket Head Cap Screw 5x30           | 1    |
| 22  | (TP16361) | Label Caution                            | 1    |
| 23  | (TP16360) | Label Rotation                           | 1    |
| 24  | (TP16207) | Dust Cover                               | 1    |
| 25  | TQ11618   | Belt Cover                               | 1    |
| 26  | TP00144   | Washer M4                                | 1    |
| 27  | TP12819   | Pan Head Screw 4x6                       | 1    |
| 28  | TQ11617   | Drive Pulley                             | 1    |
| 29  | TP01918   | Hex.Nut M10                              | 1    |
| 30  | TB07958   | Cap Ass'y                                | 1set |
| 31  | (TQ11824) | Label Model B-20N                        | 1    |
| 32  | (CQ04413) | O-ring S-38                              | 1    |
| 33  | TP00468   | Ball Bearing 608ZZ                       | 1    |
| 34  | TP01907   | End Plate A                              | 1    |
| 35  | TP10000   | Cylinder                                 | 1    |
| 36  | TA9A212   | Blade Ass'y (4pcs./set)                  | 1set |
| 37  | TP00502   | Parallel Key Both Ends Round 4x4x9.5     | 1    |
| 38  | TP01909   | Rotor                                    | 1    |
| 39  | TP01912   | Spacer                                   | 1    |
| 40  | TP01911   | End Plate B                              | 1    |
| 41  | TP01913   | Ball Bearing 6000ZZ                      | 1    |

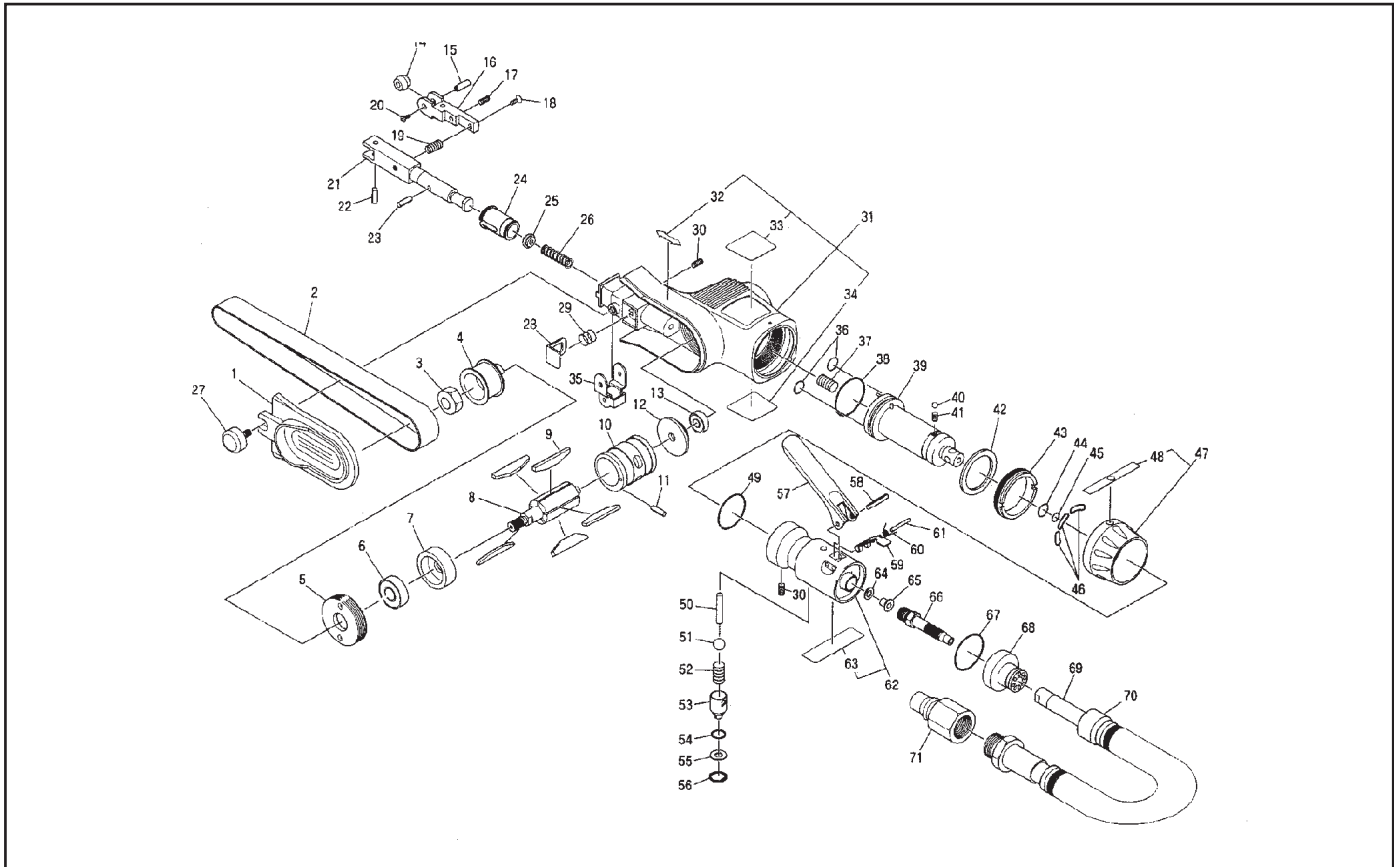
| No. | Part No.  | Part Name            | Q'ty |
|-----|-----------|----------------------|------|
| 42  | TB07957   | Housing Sub Ass'y    | 1set |
| 43  | (TQ11822) | Label Warning        | 1    |
| 44  | TQ11559   | Parallel Pin 3x14    | 1    |
| 45  | TQ11560   | Tapping Screw 3x8    | 3    |
| 46  | TB07709   | Lever Ass'y          | 1set |
| 47  | (TP00460) | Spring Pin 3x22AW    | 1    |
| 48  | TQ11554   | Adjust Lever         | 1    |
| 49  | TP08598   | Pan Head Screw 3x5   | 1    |
| 50  | TQ11626   | Lever Cap            | 1    |
| 51  | TQ11555   | Packing              | 1    |
| 52  | CQ14480   | O-ring JASO-1010     | 1    |
| 53  | TQ11551   | Air Inlet            | 1    |
| 54  | TB07938   | Throttle Valve Ass'y | 1set |
| 55  | (TP14604) | O-ring S-10          | 1    |
| 56  | (TP12569) | O-ring S-11.2        | 2    |
| 57  | TB07708   | Valve Stem Ass'y     | 1set |
| 58  | (TQ10395) | O-ring SS-2.5        | 1    |
| 59  | (TP11994) | O-ring P-4           | 1    |
| 60  | (TP03769) | Valve Spring         | 1    |
| 61  | TB07937   | Adjust Valve Ass'y   | 1set |
| 62  | (CQ25954) | O-ring AS568-012     | 1    |
| 63  | (CQ05860) | O-ring AS568-013     | 1    |
| 64  | (CP24969) | O-ring JASO-1011     | 1    |
| 65  | TP07031   | O-ring S-8           | 1    |
| 66  | TQ11558   | Silencer             | 1    |
| 67  | TP00857   | Bushing M16xPT1/4    | 1    |

### Standard Accessories

| No. | Part No. | Part Name                   | Q'ty |
|-----|----------|-----------------------------|------|
| 68  | TA99606  | Abrasive Belt Z75 #60 x 20  | 2    |
|     | TA99607  | Abrasive Belt Z75 #80 x 20  | 1    |
|     | TA99608  | Abrasive Belt Z75 #100 x 20 | 1    |
|     | TA99609  | Abrasive Belt Z75 #120 x 20 | 1    |
|     | TB07908  | Finger Pad Sub Ass'y        | 1set |
|     | TP00051  | Pan Head Screw 5 x 10       | 1    |
|     | TP02419  | Pan Head Screw 6 x 10       | 1    |
|     | TP04305  | Hex.Socket Screw Key 2.5    | 1    |
|     | TP01939  | Hex.Socket Screw Key 4      | 1    |
|     | TQ11686  | Convex Shoe                 | 1    |
|     | TP02236  | Bushing PT1/4 x NPT1/4      | 1    |
|     | TQ11700  | Instruction Manual          | 1    |



# BELTON BB-10 ASSEMBLY AND PARTS LIST



The part numbers with ( ) are included in the Ass'y parts written above them.

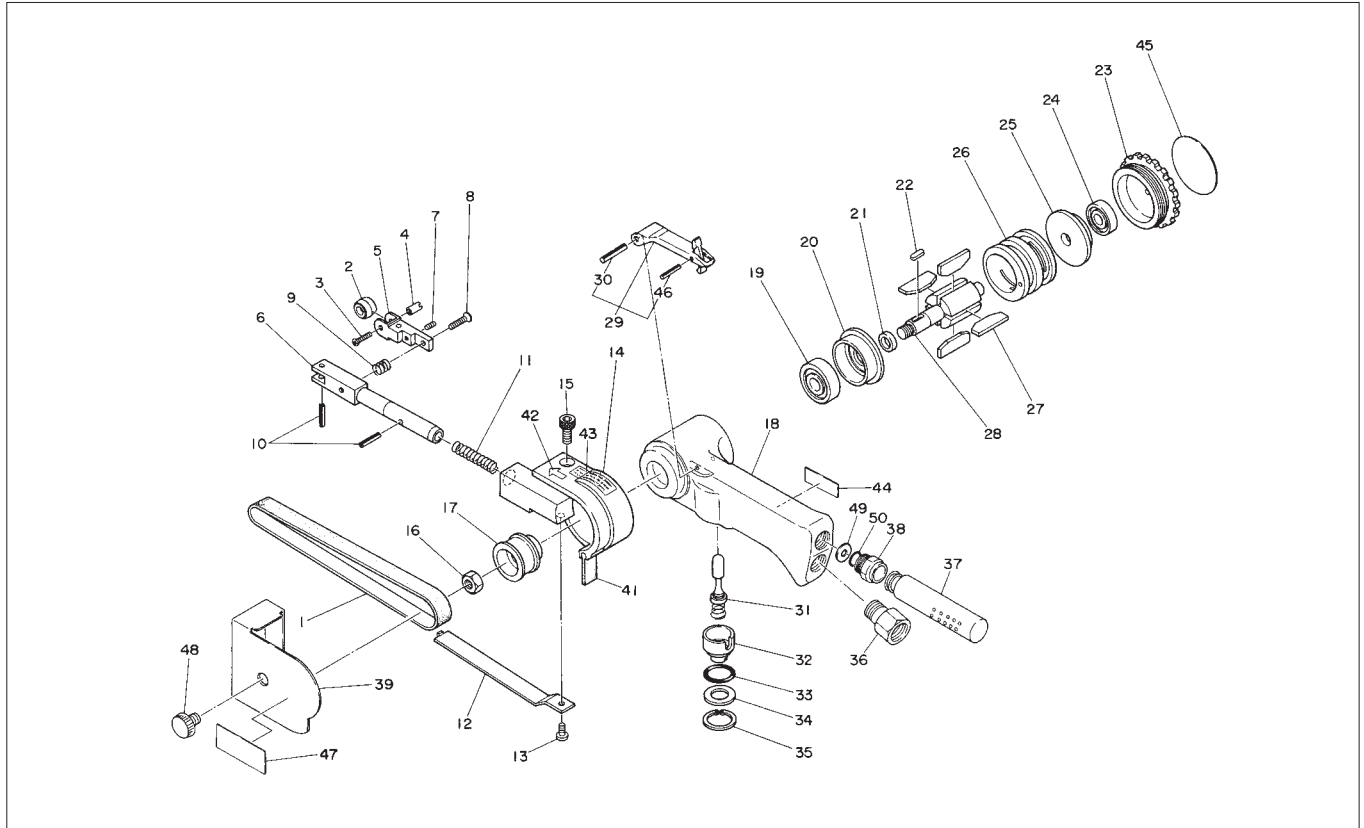
| No. | Part No.  | Part Name                     | Q'ty  | Price |
|-----|-----------|-------------------------------|-------|-------|
| 1   | TQ07219   | Cover                         | 1     |       |
| 2   |           | Abrasive Belt Z76 #100 X 10   | 1     |       |
| 3   | TP01924   | Hex Nut M6                    | 1     |       |
| 4   | TQ07215   | Drive Pulley                  | 1     |       |
| 5   | TQ07216   | Lock Screw                    | 1     |       |
| 6   | TQ07226   | Ball Bearing 698ZZ            | 1     |       |
| 7   | TQ07199   | End Plate B                   | 1     |       |
| 8   | TQ07196   | Rotor                         | 1     |       |
| 9   | TB05219   | Blade Ass'y (5 pc/set)        | 1 set |       |
| 10  | TQ07197   | Cylinder                      | 1     |       |
| 11  | TP04225   | Spring Pin 2 X 4              | 1     |       |
| 12  | TQ07198   | End Plate A                   | 1     |       |
| 13  | TQ07225   | Ball Bearing 695ZZ            | 1     |       |
| 14  | TA99155   | Idle Pulley 10 Sub Ass'y      | 1 set |       |
| 15  | TP12431   | Idle Pulley Shaft B           | 1     |       |
| 16  | TP14761   | Bracket 10                    | 1     |       |
| 17  | TP02154   | Hex Socket Set Screw 3 X 6    | 1     |       |
| 18  | TP05121   | Countersink Head Screw 3 X 10 | 1     |       |
| 19  | TP14763   | Spring 0.9 X 7.5 X 6.5        | 1     |       |
| 20  | TP14455   | + Head Screw 2 X 5            | 1     |       |
| 21  | TQ07203   | Tension Bar                   | 1     |       |
| 22  | TP14798   | Spring Pin 3 X 10             | 1     |       |
| 23  | TQ07228   | Spring Pin 3 X 12             | 1     |       |
| 24  | TQ07201   | Guard Insert                  | 1     |       |
| 25  | TQ07248   | Stopper                       | 1     |       |
| 26  | TQ07204   | Spring 1 X 8.2 X 27.5         | 1     |       |
| 27  | TQ07220   | Cover Screw                   | 1     |       |
| 28  | TQ07217   | Push Button                   | 1     |       |
| 29  | TQ07218   | Spring 0.35 X 7.5 X 7         | 1     |       |
| 30  | TQ07618   | Hex. Screw 3 X 3              | 1 set |       |
| 31  | TB05984   | Housing Ass'y                 | 1 set |       |
| 32  | (TQ07221) | Rotating Direction Label      | 2     |       |
| 33  | (TQ07222) | Model Number Label            | 1     |       |
| 34  | (TQ07767) | Warning Label                 | 1     |       |
| 35  | TB05539   | Offset Bracket Ass'y          | 1 set |       |
| 36  | TQ10274   | O Ring SS-050                 | 2     |       |
| 37  | TP06141   | Hex Socket Set Screw 6 X 6    | 1     |       |
| 38  | CP27013   | O Ring JASO-1025              | 1     |       |
| 39  | TB05962   | Front Valve Sub Ass'y         | 1 set |       |
| 40  | TP15767   | Ball 3                        | 1     |       |

| No. | Part No.  | Part Name                           | Q'ty  | Price |
|-----|-----------|-------------------------------------|-------|-------|
| 41  | TQ10276   | Spring 0.5 X 2.5 X 4.7              | 1     |       |
| 42  | TQ07208   | Spacer 23 X 30 X 1.5                | 1     |       |
| 43  | TQ07209   | Lock Ring                           | 1     |       |
| 44  | TP14604   | O Ring S-10                         | 1     |       |
| 45  | TQ07356   | O Ring S-6                          | 1 set |       |
| 46  | TQ10275   | O Ring S-12                         | 1     |       |
| 47  | TB05963   | Valve Ring Ass'y                    | 1 set |       |
| 48  | (TQ10263) | Switch Label                        | 1     |       |
| 49  | TP03988   | O Ring S-20                         | 1     |       |
| 50  | TQ10272   | Parallel Pin 3 X 14                 | 1     |       |
| 51  | TQ10271   | Ball 1/4                            | 1     |       |
| 52  | TQ10259   | Valve Spring                        | 1     |       |
| 53  | TQ10258   | Adjust Valve                        | 1     |       |
| 54  | TP12003   | O Ring KS-5                         | 1     |       |
| 55  | TP02152   | Spacer M5                           | 1     |       |
| 56  | TP17147   | Internal Retaining Ring IRTW-10     | 1     |       |
| 57  | TQ10257   | Throttle Lever                      | 1     |       |
| 58  | TP13893   | Spring Pin 3 X 22                   | 1     |       |
| 59  | TQ10256   | Lock Lever                          | 1     |       |
| 60  | TQ10255   | Lock Lever Spring                   | 1     |       |
| 61  | TQ10269   | Parallel Pin 2.5 X 16               | 1     |       |
| 62  | TB05987   | Rear Valve Sub Ass'y                | 1 set |       |
| 63  | (TQ10423) | Level Warning CE Mark               | 1     |       |
| 64  | TP06129   | Spacer M3                           | 1     |       |
| 65  | TQ10273   | Hex Socket Low Head Cap Screw 3 X 5 | 1     |       |
| 66  | TQ07210   | Hose Nipple                         | 1     |       |
| 67  | TQ10280   | O Ring S-22                         | 1     |       |
| 68  | TQ10262   | Hose Holder                         | 1     |       |
| 69  | TQ04368   | Charge Hose                         | 1     |       |
| 70  | TQ04367   | Exhaust Hose                        | 1     |       |
| 71  |           | 20PFF-PLA Ass'y (HI-Cupla)          | 1 set |       |

## ACCESSORIES

| No. | Part No. | Part Name                   | Q'ty  | Price |
|-----|----------|-----------------------------|-------|-------|
|     |          | HA-65SN Ass'y (HI-Cupla)    | 1 set |       |
|     | TP14797  | Hex Wrench Key 1.5          | 1     |       |
|     |          | Abrasive Belt Z76 #120 X 10 | 1     |       |
|     |          | Abrasive Belt Z76 #180 X 10 | 1     |       |
|     |          | Abrasive Belt Z76 #240 X 10 | 1     |       |
|     |          | Instruction Manual          | 1     |       |

# BELTON B-10B ASSEMBLY AND PARTS LIST



The Part Numbers with ( ) are included in the Ass'y parts written above them.

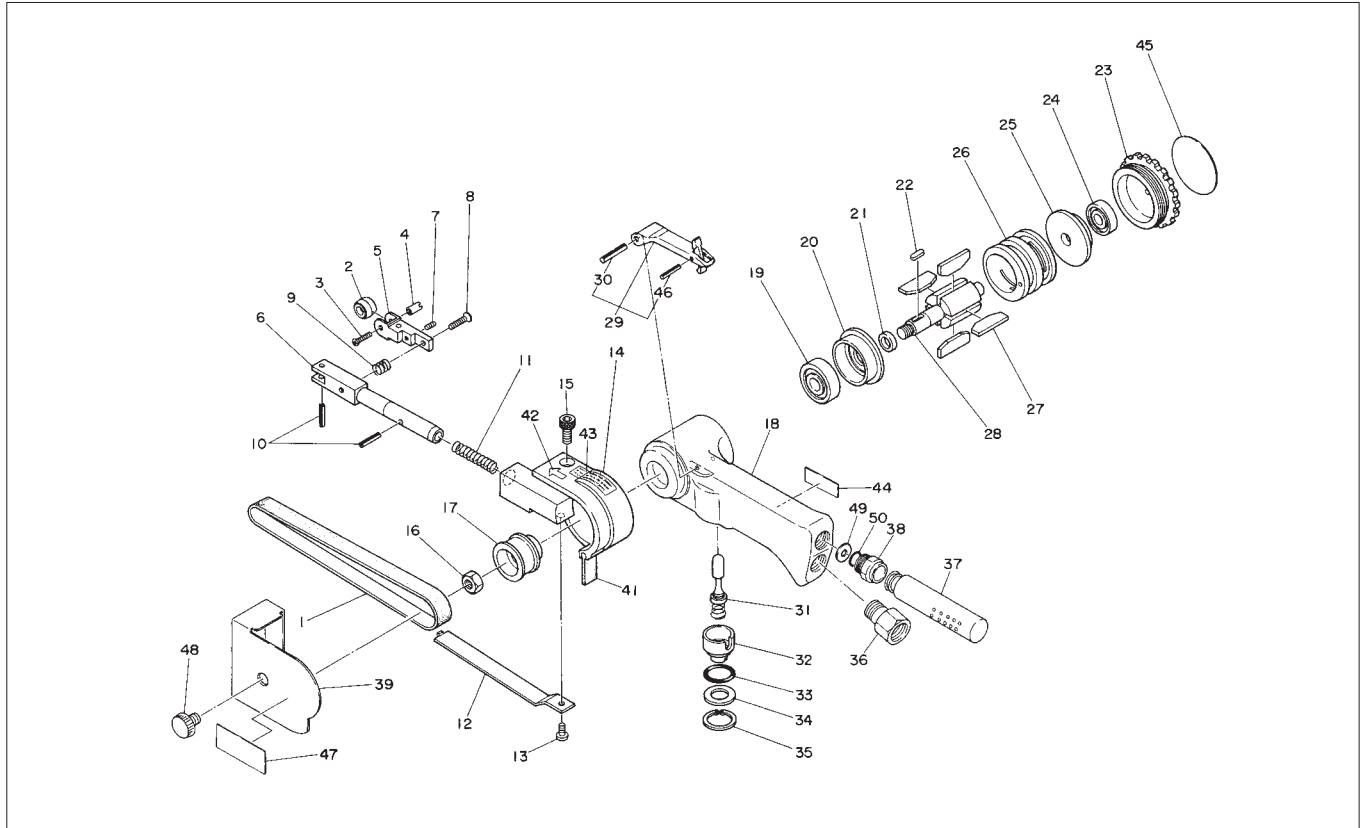
| No. | Part No.  | Part Name                   | Q'ty  | Price |
|-----|-----------|-----------------------------|-------|-------|
| 1   | TP12438   | Belts #60 X 10 (20 pcs/set) | 1 set |       |
| 2   | TA99155   | Idle Pulley 10 Sub Ass'y    | 1 set |       |
| 3   | TP14455   | + Screw 2 X 5               | 1     |       |
| 4   | TP12431   | Idle Pulley Shaft B         | 1     |       |
| 5   | TP14761   | Bracket 10                  | 1     |       |
| 6   | TP14762   | Tension Bar 10              | 1     |       |
| 7   | TP02154   | Hex. Screw 3 X 6            | 1     |       |
| 8   | TP00155   | + Screw 3 X 8               | 1     |       |
| 9   | TP14763   | Spring 0.9 X 7.5 X 6.5      | 1     |       |
| 10  | TP14798   | Spring Pin 3 X 10           | 2     |       |
| 11  | TP14458   | Spring 1.07 X 4.0 X 35.5    | 1     |       |
| 12  | TP14769   | Shoe 10                     | 1     |       |
| 13  | TA91575   | + Screw 4 X 8               | 1     |       |
| 14  | TB01982   | Guard Sub Ass'y             | 1 set |       |
| 15  | (TP01945) | Hex. Bolt 5 X 12            | 1     |       |
| 41  | (TP12423) | Dust Cover                  | 1     |       |
| 42  | (TP12437) | Label -Direction            | 1     |       |
| 43  | (TP16361) | Warning Label               | 1     |       |
| 16  | TP01924   | Hex. Nut M6                 | 1     |       |
| 17  | TP14916   | Drive Pulley                | 1     |       |
| 18  | TB01953   | Housing Sub Ass'y           | 1 set |       |
| 44  | (TQ02577) | Warning Label B-10B         | 1     |       |
| 19  | TP12419   | Ball Bearing 628ZZ          | 1     |       |
| 20  | TP12418   | End Plate B                 | 1     |       |
| 21  | TP06322   | Spacer 8 X 11 X 3           | 1     |       |
| 22  | TP10130   | Sunk Key 3 X 3 X 10         | 1     |       |
| 23  | TB01921   | Cap Ass'y                   | 1 set |       |
| 45  | (TQ02560) | Name Plate B-10B            | 1     |       |
| 24  | TP06386   | Ball Bearing 607 ZZ         | 1     |       |
| 25  | TP12414   | End Plate A                 | 1 set |       |

| No. | Part No.  | Part Name                | Q'ty  | Price |
|-----|-----------|--------------------------|-------|-------|
| 26  | TP12415   | Cylinder                 | 1     |       |
| 27  | TA9A364   | Blades (4 pcs/set)       | 1 set |       |
| 28  | TQ06447   | Rotor                    | 1     |       |
| 29  | TB01152   | Lever Ass'y              | 1 set |       |
| 30  | (TP00460) | Spring Pin 3 X 22        | 1     |       |
| 46  | (TP05498) | Spring Pin 2 X 16        | 1     |       |
| 31  | TA97633   | Valve Stem Ass'y         | 1 set |       |
| 32  | TP12405   | Adjust Valve             | 1     |       |
| 33  | TP12407   | O-Ring S-15              | 1     |       |
| 34  | TP12406   | Spacer 10.5 X 17.9 X 1.6 | 1     |       |
| 35  | CP00987   | Retaining Ring C-18      | 1     |       |
| 36  | TP00857   | Reducer M16 X PT1/4      | 1     |       |
| 37  | TA96323   | Silencer Sub Ass'y       | 1 set |       |
| 38  | TP10005   | Nipple PF3/8             | 1     |       |
| 39  | TB01930   | Belt Cover Ass'y         | 1 set |       |
| 47  | (TQ02207) | Label - CE Mark          | 1     |       |
| 48  | (TQ02418) | Fixating Screw 5 X 10    | 1     |       |
| 49  | TQ02663   | Spacer 4.8 X 14.8 X 2.6  | 1     |       |
| 50  | CP01498   | O-Ring                   | 1     |       |

## ACCESSORIES

| No. | Part No. | Part Name                    | Q'ty  | Price |
|-----|----------|------------------------------|-------|-------|
|     | TP02236  | Bushing PT1/4 X NPT1/4       | 1     |       |
|     | TP01939  | Hex. Wrench Key 4            | 1     |       |
|     | TP14797  | Hex. Wrench Key 1.5          | 1     |       |
|     | TP12438  | Belts #60 X 10 (20 pcs/set)  | 1 set |       |
|     | TP12439  | Belts #80 X 10 (20 pcs/set)  | 1 set |       |
|     | TP12440  | Belts #100 X 10 (20 pcs/set) | 1 set |       |
|     | TP12441  | Belts #120 X 10 (20 pcs/set) | 1 set |       |
|     | TQ02585  | Instruction Manual           | 1     |       |
|     | TP14770  | Shoe 6                       | 1     |       |
|     | TA99052  | Bracket 6 Ass'y              | 1     |       |

# BELTON B-10B ASSEMBLY AND PARTS LIST



The Part Numbers with ( ) are included in the Ass'y parts written above them.

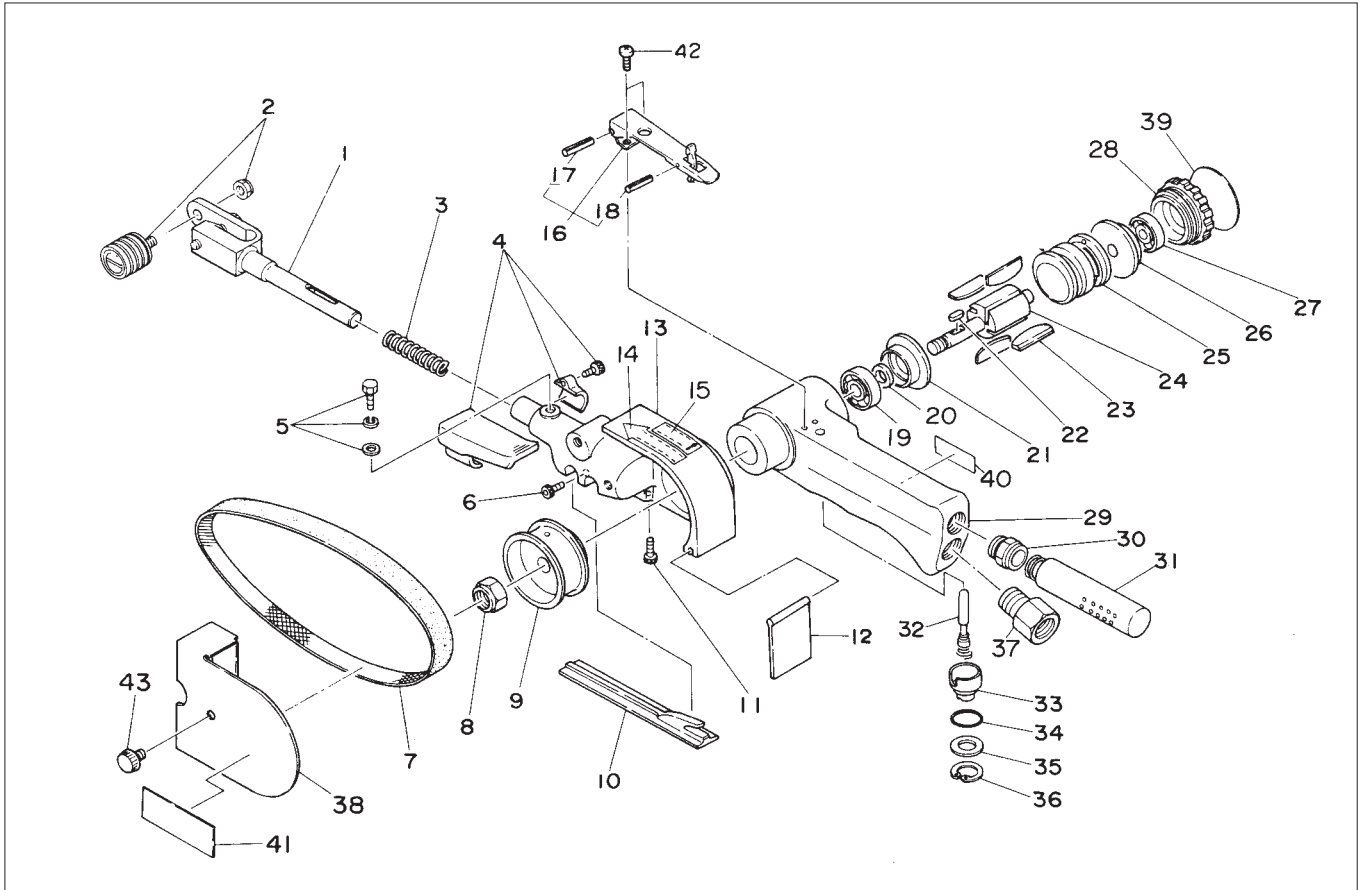
| No. | Part No.  | Part Name                   | Q'ty  | Price |
|-----|-----------|-----------------------------|-------|-------|
| 1   | TP12438   | Belts #60 X 10 (20 pcs/set) | 1 set |       |
| 2   | TA99155   | Idle Pulley 10 Sub Ass'y    | 1 set |       |
| 3   | TP14455   | + Screw 2 X 5               | 1     |       |
| 4   | TP12431   | Idle Pulley Shaft B         | 1     |       |
| 5   | TP14761   | Bracket 10                  | 1     |       |
| 6   | TP14762   | Tension Bar 10              | 1     |       |
| 7   | TP02154   | Hex. Screw 3 X 6            | 1     |       |
| 8   | TP00155   | + Screw 3 X 8               | 1     |       |
| 9   | TP14763   | Spring 0.9 X 7.5 X 6.5      | 1     |       |
| 10  | TP14798   | Spring Pin 3 X 10           | 2     |       |
| 11  | TP14458   | Spring 1.07 X 4.0 X 35.5    | 1     |       |
| 12  | TP14769   | Shoe 10                     | 1     |       |
| 13  | TA91575   | + Screw 4 X 8               | 1     |       |
| 14  | TB01982   | Guard Sub Ass'y             | 1 set |       |
| 15  | (TP01945) | Hex. Bolt 5 X 12            | 1     |       |
| 41  | (TP12423) | Dust Cover                  | 1     |       |
| 42  | (TP12437) | Label -Direction            | 1     |       |
| 43  | (TP16361) | Warning Label               | 1     |       |
| 16  | TP01924   | Hex. Nut M6                 | 1     |       |
| 17  | TP14916   | Drive Pulley                | 1     |       |
| 18  | TB01953   | Housing Sub Ass'y           | 1 set |       |
| 44  | (TQ02577) | Warning Label B-10B         | 1     |       |
| 19  | TP12419   | Ball Bearing 628ZZ          | 1     |       |
| 20  | TP12418   | End Plate B                 | 1     |       |
| 21  | TP06322   | Spacer 8 X 11 X 3           | 1     |       |
| 22  | TP10130   | Sunk Key 3 X 3 X 10         | 1     |       |
| 23  | TB01921   | Cap Ass'y                   | 1 set |       |
| 45  | (TQ02560) | Name Plate B-10B            | 1     |       |
| 24  | TP06386   | Ball Bearing 607 ZZ         | 1     |       |
| 25  | TP12414   | End Plate A                 | 1 set |       |

| No. | Part No.  | Part Name                | Q'ty  | Price |
|-----|-----------|--------------------------|-------|-------|
| 26  | TP12415   | Cylinder                 | 1     |       |
| 27  | TA9A364   | Blades (4 pcs/set)       | 1 set |       |
| 28  | TQ06447   | Rotor                    | 1     |       |
| 29  | TB01152   | Lever Ass'y              | 1 set |       |
| 30  | (TP00460) | Spring Pin 3 X 22        | 1     |       |
| 46  | (TP05498) | Spring Pin 2 X 16        | 1     |       |
| 31  | TA97633   | Valve Stem Ass'y         | 1 set |       |
| 32  | TP12405   | Adjust Valve             | 1     |       |
| 33  | TP12407   | O-Ring S-15              | 1     |       |
| 34  | TP12406   | Spacer 10.5 X 17.9 X 1.6 | 1     |       |
| 35  | CP00987   | Retaining Ring C-18      | 1     |       |
| 36  | TP00857   | Reducer M16 X PT1/4      | 1     |       |
| 37  | TA96323   | Silencer Sub Ass'y       | 1 set |       |
| 38  | TP10005   | Nipple PF3/8             | 1     |       |
| 39  | TB01930   | Belt Cover Ass'y         | 1 set |       |
| 47  | (TQ02207) | Label - CE Mark          | 1     |       |
| 48  | (TQ02418) | Fixating Screw 5 X 10    | 1     |       |
| 49  | TQ02663   | Spacer 4.8 X 14.8 X 2.6  | 1     |       |
| 50  | CP01498   | O-Ring                   | 1     |       |

## ACCESSORIES

|  |         |                              |       |  |
|--|---------|------------------------------|-------|--|
|  | TP02236 | Bushing PT1/4 X NPT1/4       | 1     |  |
|  | TP01939 | Hex. Wrench Key 4            | 1     |  |
|  | TP14797 | Hex. Wrench Key 1.5          | 1     |  |
|  | TP12438 | Belts #60 X 10 (20 pcs/set)  | 1 set |  |
|  | TP12439 | Belts #80 X 10 (20 pcs/set)  | 1 set |  |
|  | TP12440 | Belts #100 X 10 (20 pcs/set) | 1 set |  |
|  | TP12441 | Belts #120 X 10 (20 pcs/set) | 1 set |  |
|  | TQ02585 | Instruction Manual           | 1     |  |
|  | TP14770 | Shoe 6                       | 1     |  |
|  | TA99052 | Bracket 6 Ass'y              | 1     |  |

# BELTON B-20C ASSEMBLY AND PARTS LIST



The Part Numbers with ( ) are included in the Ass'y parts written above them.

| No. | Part No.  | Part Name                       | Q'ty  | Price |
|-----|-----------|---------------------------------|-------|-------|
| 1   | TA9A632   | Idle Pulley Bracket B Sub Ass'y | 1 set |       |
| 2   | TA90514   | Idle Pulley B Ass'y             | 1 set |       |
| 3   | TP16535   | Spring 1.2 X 7.8 X 51           | 1     |       |
| 4   | TA90512   | Finger Pad Ass'y                | 1 set |       |
| 5   | TA92254   | Key Bolt Ass'y                  | 1 set |       |
| 6   | TP01945   | Hex. Bolt 5 X 12                | 1     |       |
| 7   | TP01936   | Belts #60 X 20 (20 pcs/set)     | 1 set |       |
| 8   | TP01918   | Hex. Nut M10 XP1.25             | 1     |       |
| 9   | TP01917   | Drive Pulley                    | 1     |       |
| 10  | TP01935   | Flat Shoe                       | 1     |       |
| 13  | TB01950   | Guard Body Sub Ass'y            | 1 set |       |
| 11  | (TP01934) | Hex. Bolt 5 X 18                | 1     |       |
| 12  | (TP16207) | Dust Cover                      | 1     |       |
| 14  | (TP16360) | Label -Rotating Direction       | 1     |       |
| 15  | (TP16361) | Warning Label                   | 1     |       |
| 16  | TB01793   | Throttle Lever Ass'y            | 1 set |       |
| 17  | (TP00460) | Spring Pin 3 X 22               | 1     |       |
| 18  | (TP05498) | Spring Pin 2 X 16               | 1     |       |
| 42  | TP06290   | + Screw 4 X 8                   | 2     |       |
| 19  | TP01913   | Ball Bearing 6000 Z             | 1     |       |
| 20  | TP01912   | Distance Collar                 | 1     |       |
| 21  | TP01911   | End Plate B                     | 1     |       |
| 22  | TP00502   | Sunk Key 4 X 4 X 9.5            | 1     |       |
| 23  | TA9A212   | Blades (4 pcs/set)              | 1 set |       |
| 24  | TP01909   | Rotor                           | 1     |       |
| 25  | TP10000   | Cylinder                        | 1     |       |
| 26  | TP01907   | End Plate A                     | 1     |       |

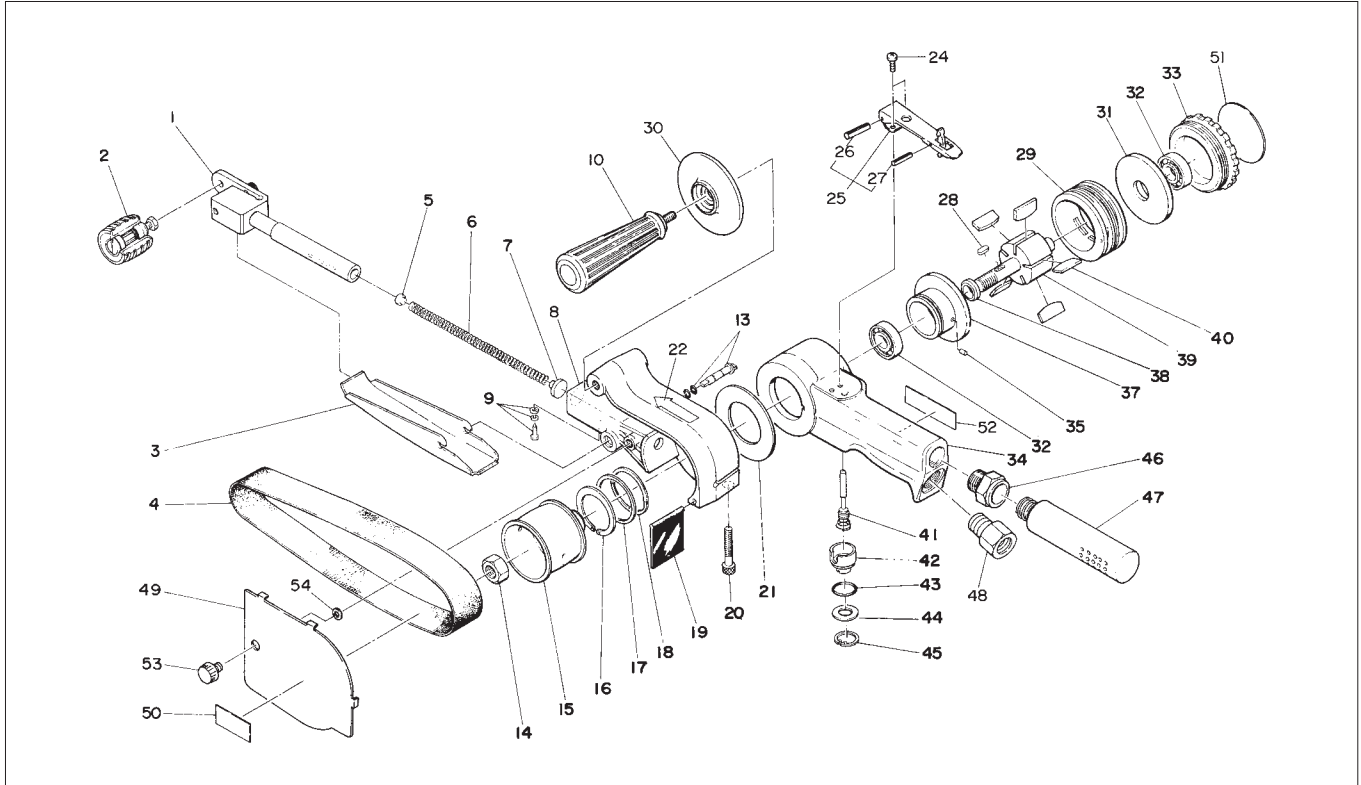
| No. | Part No.  | Part Name                | Q'ty  | Price |
|-----|-----------|--------------------------|-------|-------|
| 27  | TP00468   | Ball Bearing 608Z        | 1     |       |
| 28  | TB01941   | Cap Ass'y                | 1 set |       |
| 39  | (TQ02582) | Name Plate               | 1     |       |
| 29  | TB01938   | Housing Sub Ass'y        | 1 set |       |
| 40  | (TQ02578) | Warning Label            | 1     |       |
| 30  | TP10005   | Nipple PF3/8             | 1     |       |
| 31  | TA96323   | Silencer Sub Ass'y       | 1 set |       |
| 32  | TA95954   | Valve Stem Ass'y         | 1 set |       |
| 33  | TP12405   | Adjust Valve             | 1     |       |
| 34  | TP12407   | O-Ring S-15              | 1     |       |
| 35  | TP12406   | Spacer 10.5 X 17.9 X 1.6 | 1     |       |
| 36  | CP00987   | Retaining Ring C-18      | 1     |       |
| 37  | TP00857   | Reducer M16 X PT1/4      | 1     |       |
| 38  | TB01947   | Belt Cover Ass'y         | 1 set |       |
| 41  | (TQ02207) | Label CE-Mark            | 1     |       |
| 43  | (TQ02418) | Fixing Screw 5 X 10      | 1     |       |

## ACCESSORIES

|  |         |                              |       |  |
|--|---------|------------------------------|-------|--|
|  | TP01939 | Hex. Wrench Key 4            | 1     |  |
|  | TP01940 | Convex Shoe                  | 1     |  |
|  | TP02236 | Reducer PT1/4 X NPT1/4       | 1     |  |
|  | TP01936 | Belts #60 X 20 (20 pcs/set)  | 1 set |  |
|  | TP01942 | Belts #80 X 20 (20 pcs/set)  | 1 set |  |
|  | TP01943 | Belts #100 X 20 (20 pcs/set) | 1 set |  |
|  | TP01944 | Belts #120 X 20 (20 pcs/set) | 1 set |  |
|  | TQ02585 | Instruction Manual           | 1     |  |
|  | TB03101 | Offset Bracket 20 Ass'y      | 1     |  |



# BELTON B-30B ASSEMBLY AND PARTS LIST



The Part Numbers with ( ) are included in the Ass'y parts written above them.

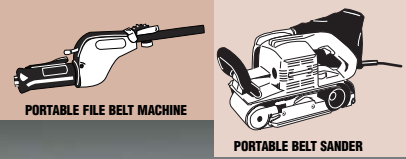
| No. | Part No.  | Part Name                      | Q'ty  | Price |
|-----|-----------|--------------------------------|-------|-------|
| 1   | TA91524   | Tension Bar Ass'y              | 1 set |       |
| 2   | TA91522   | Idle Pulley Ass'y              | 1 set |       |
| 3   | TP04052   | Flat Shoe                      | 1     |       |
| 4   | TP04084   | Belts #60 X 30 (20 pcs/set)    | 1 set |       |
| 5   | TP04048   | Spring Retainer A              | 1     |       |
| 6   | TP04047   | Tension Spring                 | 1     |       |
| 7   | TP04062   | Spring Retainer B              | 1     |       |
| 8   | TB03184   | Guard Body Sub Ass'y           | 1 set |       |
| 22  | (TP16360) | Label -Rotating Direction      | 1     |       |
|     | (TP04073) | Hex. Bolt 6 X 35               | 1     |       |
| 19  | (TP04060) | Dust Cover                     | 1     |       |
| 9   | TA92254   | Key Bolt Ass'y                 | 1 set |       |
| 10  | TA91354   | Sub Handle Ass'y               | 1 set |       |
| 13  | TA92398   | Shoe Holder Ass'y              | 1     |       |
| 14  | TP04077   | U Nut M12 P1.5                 | 1     |       |
| 15  | TP04045   | Drive Pulley                   | 1     |       |
| 16  | TP04069   | Retaining Ring ISTW-35         | 1     |       |
| 17  | TP04044   | Thrust Washer A 36.2 X 43 X 11 | 1     |       |
| 18  | TP04072   | Waved Washer W-35              | 1     |       |
| 21  | TP04058   | Thrust Washer B 36.2 X 62 X 11 | 1     |       |
| 24  | TP06290   | + Screw 4 X 8                  | 1     |       |
| 25  | TB01793   | Throttle Lever Ass'y           | 1 set |       |
| 26  | (TP00460) | Spring Pin 3 X 22              | 1     |       |
| 27  | (TP05498) | Spring Pin 2 X 16              | 1     |       |
| 28  | TP00502   | Sunk Key 4 X 4 X 9.5           | 1     |       |
| 29  | TP04031   | Cylinder                       | 1     |       |
| 30  | TP16126   | Grip Guard                     | 1     |       |
| 31  | TP04035   | Upper Bearing Case             | 1     |       |
| 32  | TP00498   | Ball Bearing 6001ZZ            | 2     |       |

| No. | Part No.  | Part Name                | Q'ty  | Price |
|-----|-----------|--------------------------|-------|-------|
| 33  | TB03177   | Cap Ass'y                | 1 set |       |
| 51  | (TQ04082) | Name Plate               | 1     |       |
| 34  | TB03186   | Housing Sub Ass'y        | 1 set |       |
| 52  | (TQ04085) | Warning Label            | 1     |       |
| 35  | TP04061   | Spring Pin 3 X 6         | 1     |       |
| 37  | TP04034   | Lower Bearing Case       | 1     |       |
| 38  | TP04036   | Distance Collar          | 1     |       |
| 39  | TQ06448   | Rotor                    | 1     |       |
| 40  | TA9A215   | Blades (5 pcs/set)       | 1 set |       |
| 41  | TA93925   | Valve Stem Ass'y         | 1 set |       |
| 42  | TP12405   | Adjust Valve             | 1     |       |
| 43  | TP12407   | O-Ring S-15              | 1     |       |
| 44  | TP12406   | Spacer 10.5 X 17.9 X 1.6 | 1     |       |
| 45  | CP00987   | Retaining Ring C-18      | 1     |       |
| 46  | TP10005   | Nipple PF3/8             | 1     |       |
| 47  | TA96323   | Silencer Sub Ass'y       | 1 set |       |
| 48  | TP00857   | Reducer M16 X PT1/4      | 1     |       |
| 49  | TB01967   | Belt Cover Ass'y         | 1 set |       |
| 50  | (TQ02207) | Label CE-Mark            | 1     |       |
| 53  | (TQ02418) | Fixing Screw 5 X 10      | 1     |       |
| 54  | (TQ04426) | Nylon Washer             | 1     |       |

## ACCESSORIES

|  |         |                              |       |  |
|--|---------|------------------------------|-------|--|
|  | TP04004 | Hex. Wrench Key 5            | 1     |  |
|  | TP02236 | Reducer PT1/4 X NPT3/8       | 1     |  |
|  | TP04084 | Belts #60 X 30 (20 pcs/set)  | 1 set |  |
|  | TP04085 | Belts #80 X 30 (20 pcs/set)  | 1 set |  |
|  | TP04086 | Belts #100 X 30 (20 pcs/set) | 1 set |  |
|  | TQ02585 | Instruction Manual           | 1     |  |
|  | TP04083 | Convex Shoe                  | 1     |  |
|  | TB03102 | Offset Bracket 30 Ass'y      | 1 set |  |

# FILE AND PORTABLE BELTS



File belt specifications to perform on the most demanding, intricate shapes, profiles and materials. Portable belts are ideal for all your metal and woodworking applications.

## Typical File Belt Applications

- Light weld removal and blending
- Shape and contour sanding
- Surface preparation prior to coating and plating
- Removing cutting tool marks from molds and dies
- General clean-up and finishing

## Typical Portable Belt Applications

- Grinding and finishing of all metals
- Blending of welds
- Sanding and finishing of wood
- Glass seaming and polishing



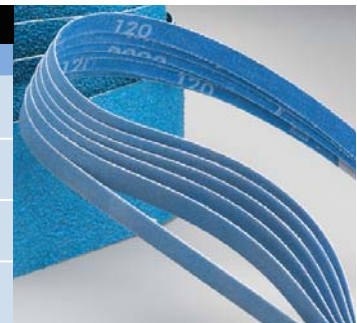
| <b>BEST Norton SG Blaze R980 Belts – For greatest productivity</b>   |  |
|--|--|
| <b>FEATURES</b>  | <b>BENEFITS</b>  |
| <ul style="list-style-type: none"> <li>• Next generation cooler cutting SG ceramic abrasive grain</li> </ul> | <ul style="list-style-type: none"> <li>• Lasts 50% to 200% longer on mild and carbon steel, stainless, cobalt, chrome, inconel and titanium</li> <li>• Cuts 20% faster than the current generation of grinding belts</li> <li>• Longer belt life</li> <li>• Better metal integrity</li> <li>• Greater productivity; lowest total grinding costs</li> </ul> |
| <ul style="list-style-type: none"> <li>• Improved Y-wt polyester waterproof cloth backing</li> </ul>         | <ul style="list-style-type: none"> <li>• Significantly improved belt life due to better grain adhesion</li> <li>• Edge-fray resistance</li> <li>• Improved body retention during use for more consistent grinding throughout belt life</li> </ul>  |
| <ul style="list-style-type: none"> <li>• Improved resin bond system</li> </ul>                               | <ul style="list-style-type: none"> <li>• Improved grain-retention; cooler cutting during the life of the belt</li> </ul>   |
| <ul style="list-style-type: none"> <li>• Advanced “supersize” grinding lubricant</li> </ul>                  | <ul style="list-style-type: none"> <li>• Cooler cutting during the life of the belt</li> <li>• Improved part finish and integrity</li> </ul>   |



| <b>BEST Norton SG R981 Belts – Ideal for heat-sensitive jobs</b>                                       |   |
|--|---|
| <b>FEATURES</b>  | <b>BENEFITS</b>   |
| <ul style="list-style-type: none"> <li>• Patented Norton SG ceramic aluminum oxide abrasive</li> </ul> | <ul style="list-style-type: none"> <li>• Exceptional life and value, especially on hard-to-grind alloys</li> <li>• Aggressive cut rate</li> <li>• Sharpness maintained throughout life of the belt</li> </ul> |
| <ul style="list-style-type: none"> <li>• Grinding aid coating</li> </ul>                               | <ul style="list-style-type: none"> <li>• Cooler cut, burn-free grinding of heat-sensitive materials</li> <li>• Minimizes loading</li> </ul>   |
| <ul style="list-style-type: none"> <li>• Durable Y-wt polyester, waterproof cloth backing</li> </ul>   | <ul style="list-style-type: none"> <li>• Improved grain adhesion, reduced edge-fray and better body retention, result in longer life and product consistency</li> </ul>                                       |



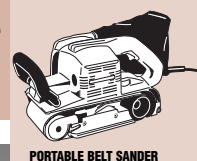
| <b>BETTER NorZon Plus R823 Belts – The choice for stainless steel</b>  |   |
|--|---|
| <b>FEATURES</b>  | <b>BENEFITS</b>   |
| <ul style="list-style-type: none"> <li>• Premium, self-sharpening zirconia alumina abrasive</li> </ul>           | <ul style="list-style-type: none"> <li>• Aggressive, rapid cut rate</li> </ul>                  |
| <ul style="list-style-type: none"> <li>• Strong grain adhesion, durable grain coating</li> </ul>                 | <ul style="list-style-type: none"> <li>• Longer life</li> </ul>                                 |
| <ul style="list-style-type: none"> <li>• Waterproof for use on a broad range of materials</li> </ul>             | <ul style="list-style-type: none"> <li>• Versatile</li> </ul>                                   |
| <ul style="list-style-type: none"> <li>• Strong X-wt polyester backing, available in finer grit range</li> </ul> | <ul style="list-style-type: none"> <li>• For moderate to heavy pressure applications</li> </ul> |



# FILE AND PORTABLE BELTS



PORTABLE FILE BELT MACHINE



PORTABLE BELT SANDER

| <b>BETTER</b> NorZon Plus 3X Belt Job Packs   |   |
|---|---|
| FEATURES  | BENEFITS  |
| <ul style="list-style-type: none"> <li>Premium, self-sharpening, zirconia alumina abrasive</li> <li>Reversible butt splice</li> <li>Open coat design, strong Y-wt backing</li> <li>Tri-lingual, job specific application information</li> <li>Durable packages</li> </ul> | <ul style="list-style-type: none"> <li>Aggressive, rapid cut rate, long life</li> <li>Use in either direction for longer life</li> <li>Reduced loading, extended life</li> <li>Simplifies selection</li> <li>Minimize waste and damage</li> <li>Better product visibility</li> <li>Portable; ideal for wall merchandising and carrying to the job site</li> </ul> |



| <b>GOOD</b> Metalite R228 Belts – For metal and wood  |  |
|---|--|
| FEATURES  | BENEFITS   |
| <ul style="list-style-type: none"> <li>Aluminum oxide abrasive</li> <li>Strong X-wt cotton backing</li> </ul> | <ul style="list-style-type: none"> <li>Aggressive cutting; resistant to heat</li> <li>Versatile</li> </ul> |



| <b>GOOD</b> Metalite R283 Belts – Versatility for all MRO applications  |   |
|---|---|
| FEATURES  | BENEFITS  |
| <ul style="list-style-type: none"> <li>P-graded premium aluminum oxide abrasive</li> <li>Semi-flexible backing</li> </ul> | <ul style="list-style-type: none"> <li>Consistent, cool cut</li> <li>Tear and fray resistant</li> </ul> |



| <b>GOOD</b> Aluminum Oxide – All Purpose Belt Job Packs   |  |
|---|--|
| FEATURES  | BENEFITS   |
| <ul style="list-style-type: none"> <li>Aluminum oxide abrasive</li> <li>X-wt cotton backing</li> <li>Tri-lingual, job specific application information</li> <li>Durable packages</li> </ul> | <ul style="list-style-type: none"> <li>Tough and durable, with an aggressive cutting action</li> <li>Versatile; ideal for metal and wood</li> <li>Simplifies selection</li> <li>Minimize waste and damage</li> <li>Better product visibility</li> <li>Portable; ideal for wall merchandising and carrying to the job site</li> </ul> |



## Recommended Grit Selection

| ROUGH/HEAVY-DUTY | INTERMEDIATE | FINISHING/POLISHING |
|------------------|--------------|---------------------|
| 36–50            | 60–100       | 100–120             |

## File and Portable Belt Competitive Cross Reference

| NORTON                           | 3M   | HERMES                          | KLINGSPOR                 | SAIT       | SIA                               | VSM              |
|----------------------------------|--|---------------------------------|---------------------------|------------|-----------------------------------|------------------|
| <b>FILE AND PORTABLE BELTS</b>   |  |                                 |                           |            |                                   |                  |
| Norton SG Blaze R980             | 977F, 967F, 987F1                                      | CR456                           | CS610YY                   |            |                                   | SK840X, SK750X   |
| Norton SG R981                   | 987F, 963G, 963H, 967F                                 |                                 |                           |            |                                   |                  |
| <b>ADDITIONAL FILE BELTS</b>     |  |                                 |                           |            |                                   |                  |
| NorZon Plus R823                 | 551E Cubicut XE  | RB844Y                          | CS411YX                   |            |                                   | KK715X           |
| Metalite R283                    | 231D, 241E, 261E<br>311ED, 331D, 351E, 353E            | RB317J, RB316EJ<br>RB303 Flex   | CS310XF                   |            | 933A, 936A                        | KK711T, KK511J   |
| <b>ADDITIONAL PORTABLE BELTS</b> |  |                                 |                           |            |                                   |                  |
| NorZon Plus Job Pack             | 561D Y, 568D Y, 761D                                   | RB484TY                         | CS411X                    | ZH         |                                   |                  |
| Metalite R228                    | 240DZ OPK, 260DZ OPK<br>241D, 248D, 251D<br>3411, 351D | RB316XOP<br>RB372YOP<br>RB346MX | CS311X<br>CS310Y<br>CS410 | AOX<br>IAX | 2903XO<br>2905X<br>2920X<br>2928Y | KK511X<br>KK711X |
| All Purpose Job Pack             | 270D, 270DZ, 272DZ<br>260D, 362RZ                      | RB316-34XOP                     | CS311X<br>CS413Y          |            |                                   | KK524X           |



# FILE BELTS



PORTABLE FILE BELT MACHINE

**File Belts**  
**1/4" to 1" Wide,**  
**12" to 30" Long**

| SIZE<br>W X L | GRIT                               | MIN./<br>STD. PKG. | BEST<br>SG BLAZE R980†                    |                         | BEST<br>SG R981†   |                                  | BETTER<br>NORZON + R823†                                 |                                  | GOOD<br>METALITE R283*  |   |
|---------------|------------------------------------|--------------------|---|-------------------------|--|----------------------------------|--|----------------------------------|---|---|
|               |                                    |                    | UPC NO.                                   | JOINT/<br>FLEX          | UPC NO.  | JOINT/<br>FLEX                   | UPC NO.  | JOINT/<br>FLEX                   | UPC NO.   | JOINT/<br>FLEX                            |
| 1/4 x 24      | 60<br>120                          | 50/200             |   |                         | 78072756534  | PG, S                            | 78072728552<br>78072728550                               | PG, S<br>PG, S                   | 78072727548   | PG, L                                     |
| 3/8 x 13      | 60<br>80                           | 50/200             |   |                         |  |                                  | 78072740295<br>78072736062                               | PG, S<br>PG, S                   |   |   |
| 1/2 x 12      | 40<br>50<br>60<br>80<br>100<br>120 | 50/200             | 69957398018<br>69957398019<br>69957398020 | PG, S<br>PG, S<br>PG, S | 78072718700<br>78072718701<br>78072718702                | PG, S<br>PG, S<br>PG, S          | 78072728745<br>78072728744<br>78072728742                | PG, S<br>PG, S<br>PG, S          | 78072727557   | PG, L                                     |
| 1/2 x 18      | 40<br>60<br>80<br>120              | 50/200             | 69957398021<br>69957398022<br>69957398023 | PG, S<br>PG, S<br>PG, S | 78072718704<br>78072718705<br>78072718706                | PG, S<br>PG, S<br>PG, S          | 78072728569<br>78072728568<br>78072728567                | PG, S<br>PG, S<br>PG, S          | 78072727561<br>78072727560<br>78072727559<br>78072727558                | PG, L<br>PG, L<br>PG, L<br>PG, L          |
| 1/2 x 24      | 40<br>50<br>60<br>80<br>100<br>120 | 50/200             | 69957398024<br>69957398025<br>69957398026 | PG, S<br>PG, S<br>PG, S | 78072718707<br>78072718708<br>78072718709<br>78072718710 | PG, S<br>PG, S<br>PG, S<br>PG, S | 78072728564<br>78072728566<br>78072753076<br>78072728565 | PG, S<br>PG, S<br>PG, S<br>PG, S | 78072727568<br>78072727567<br>78072727566<br>78072727565<br>78072727564 | PG, L<br>PG, L<br>PG, L<br>PG, L<br>PG, L |
| 3/4 x 18      | 40<br>60<br>80                     | 50/200             | 69957398027<br>69957398028<br>69957398029 | PG, S<br>PG, S<br>PG, S | 78072745691<br>78072756309                               | PG, S<br>PG, S                   | 78072709590<br>78072758953                               | PG, S<br>PG, S                   |   |   |
| 3/4 x 20-1/2  | 40<br>50<br>60<br>80<br>100<br>120 | 50/200             | 69957398030<br>69957398031<br>69957398032 | PG, S<br>PG, S<br>PG, S | 78072718714<br>78072718715<br>78072718716                | PG, S<br>PG, S<br>PG, S          | 78072728560<br>78072728559<br>78072728557                | PG, S<br>PG, S<br>PG, S          | 78072727573   | PG, L                                     |
| 1 x 12        | 60                                 | 50/200             |   |                         |  |                                  | 78072753073  | PG, S                            |   |   |
| 1 x 24        | 50                                 | 50/200             |   |                         | 78072710374  | PG, S                            |  |                                  |   |   |
| 1 x 30        | 60<br>80<br>120                    | 50/200             |   |                         |  |                                  | 78072728583<br>78072728582                               | PG, L<br>PG, L                   | 78072727579<br>78072727577  | PG, L<br>PG, L                            |

REFER TO PAGE 82 FOR JOINT AND FLEX DESCRIPTIONS.  
 \* P-GRADED † WATERPROOF



## Starting Recommendations by Material

| MATERIAL               | HEAVY-DUTY           | GENERAL-DUTY        |
|------------------------|----------------------|---------------------|
| Carbon Steel           | Norton SG R981       | Metalite R283, R228 |
| Stainless Steel/Alloys | Norton SG Blaze R980 | NorZon Plus R823    |
| Cast Iron              | Norton SG R981       | Metalite R283, R228 |
| Brass/Bronze           | NorZon Plus R823     | NorZon Plus R823    |
| Aluminum               | NorZon Plus R823     | Metalite R283       |
| Wood                   | NorZon Plus R823     | Metalite R228       |

## Troubleshooting Guide

| PROBLEM              | POSSIBLE CAUSES                      | CORRECTION                          |
|----------------------|--------------------------------------|-------------------------------------|
| Belt splice breakage | Tension too tight                    | Reduce tension                      |
| Reduced belt life    | Too fine a grit<br>Too high pressure | Use coarser grit<br>Reduce pressure |