

DUCTILE IRON

DUCTILE IRON/ FLAT TREAD - FM

Capacity Up to 6000 lbs.



Features

- **Wheel Face:** FM flat tread design, FR full radius tread design.
- **Finish:** Black painted.

Temperature Range:

Up to +800°F.

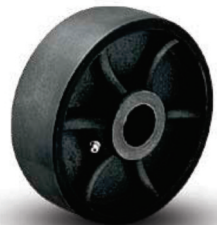
Tensile Strength:

65K PSI.

Dia. (inch)	Width (inch)	Capacity (lbs)	Hub Length (inch)	Bore (inch)	Bearing (inch)	Wt. (lbs)	Part Number Plain Bore (00)	Part Number Roller Bearing (01)	Part Number Tapered Roller (09)
5	2	1500	2-3/16	1-3/16	3/4	6	FM0520019	FM0520112	
5	2	1500	2-3/16	1-3/16	1/2	6			FM0520908
6	2	1500	2-3/16	1-3/16	3/4	7-1/2	FM0620019	FM0620112	
6	2	2000	2-3/16	1-3/16	1/2	7-1/2			FM0620908
6	3	6000	3-1/4	1-15/16	1-1/4	11-1/2	FM0640013	FM0640120	
6	3	6000	3-1/4	1-15/16	1-1/4	11-1/2			FM0640912
8	2	2000	2-3/16	1-3/16	3/4	11	FM0820019	FM0820112	
8	2	2000	2-3/16	1-3/16	1/2	11			FM0820908
8	3	6000	3-1/4	1-15/16	1	15-1/2	FM08350031	FM0830116	
8	3	6000	3-1/4	1-15/16	3/4	15-1/2			FM0830912
10	3	6000	3-1/4	1-15/16	1-1/4	20-1/2	FM1030031	FM1030120	
10	3	6000	3-1/4	1-15/16	3/4	20-1/2			FM1030912

DUCTILE IRON/ CROWN TREAD - FR

Capacity Up to 6000 lbs.



Dia. (inch)	Width (inch)	Capacity (lbs)	Hub Length (inch)	Bore (inch)	Bearing (inch)	Wt. (lbs)	Part Number Plain Bore (00)	Part Number Roller Bearing (01)	Part Number Tapered Roller (09)
5	2	1500	2-3/16	1-3/16	3/4	6	FR0520019	FR0520112	
5	2	1500	2-7/16	1-3/8	1/2	6			FR0520908
6	2	2000	2-3/16	1-3/16	3/4	7-1/2	FR0620019	FR0620112	
6	2	2000	2-7/16	1-3/8	1/2	7-1/2			FR0620908
6	3	6000	3-1/4	1-15/16	1-1/4	11-1/2	FR0630013	FR0630120	
6	3	6000	3-1/2	1-15/16	3/4	11-1/2			FR0630912
8	2	1500	2-3/16	1-3/16	1-3/16	11	FR0820019	FR0820112	
8	2	2000	2-7/16	1-3/8	1/2	11			FR0820908
8	3	5000	3-1/4	1-15/16	1-1/4	15-1/2	FR0830031	FR0830116	
8	3	6000	3-1/2	1-15/16	3/4	15-1/2			FR0830912
10	3	5000	3-1/4	1-15/16	1-1/4	20-1/2	FR1030031	FR1030120	
10	3	6000	3-1/2	1-15/16	3/4	20-1/2			FR1030912

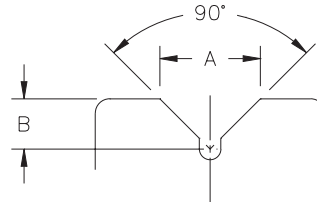
DUCTILE IRON/ V-GROOVE - VM

Capacity Up to 6000 lbs.



V-Groove Measurements

- A: 6" & 8" wheel diameters = 7/8" wide
10" wheel diameters = 1-3/8" wide
- B: 6" & 8" wheel diameters = 7/16" tall
10" wheel diameters = 11/16" tall



Wheel Dia. (inch)	Tread Width (inch)	Capacity (lbs)	Hub Length (inch)	Bore ID (inch)	Bearing ID (inch)	Groove Width "A"	Groove Depth "B"	Approx. Weight (lbs)	Part Number Roller Bearing (01)	Part Number Tapered Roller (09)
6	3	5000	3-1/4	1-15/16	1	7/8	7/16	10-1/2	VM0630116	
6	3	5000	3-1/4	1-15/16	1-1/4	7/8	7/16	10-1/2	VM0630120	
6	3	5000	3-1/2	1-15/16	3/4	7/8	7/16	10-1/2		VM0630912
8	3	5000	3-1/4	1-15/16	1	7/8	7/16	16-1/2	VM0830116	
8	3	5000	3-1/4	1-15/16	1-1/4	7/8	7/16	16-1/2	VM0830120	
8	3	5000	3-1/2	1-15/16	3/4	7/8	7/16	16-1/2		VM0830912
8	3	5000	3-1/2	1-15/16	1	7/8	7/16	16-1/2		VM0830916
10	3	6000	3-1/4	1-15/16	1	1-3/8	11/16	26	VM1030116	
10	3	6000	3-1/4	1-15/16	1-1/4	1-3/8	11/16	26	VM1030120	
10	3	6000	3-1/2	1-15/16	3/4	1-3/8	11/16	26		VM1030912
10	3	6000	3-1/2	1-15/16	1	1-3/8	11/16	26		VM1030916

* R = Roller Bearing, P = Precision Ball Bearing, T= Tapered Roller Bearing

Available in STEEL or STAINLESS STEEL with precision ball bearings and end caps.