

**Nitto Kohki**  
**RIGHT ANGLE GRINDERS**



**MAG-25B Right Angle Grinder**

- Ultra compact and lightweight design
- Ideal for grinding in space restricted areas
- Uses standard 2" depressed center wheels
- Variable speed control
- Insulated handle for operator convenience and comfort
- Locking throttle lever helps prevent accidental start-up
- Side exhaust with silencer for quiet operation

**Specifications**

Model	MAG-25B
Air Pressure	85 psi
Air Consumption	14.1 CFM
Free Speed	22,000 RPM
Standard Wheel Requirement	2" depressed center
Hose Size Requirement	3/8" ID
Dimension	5" x 2-9/16"
Weight	1.2 lbs.
Spindle Size	3/8"
Horsepower	1/4 hp

**Additional Accessories**

5mm allen wrench, spanner, abrasive wheel AC#80 threaded adapter PT1/4" x NPT1/4"

**Acorn Industrial Products Co**

520 Hertzog Boulevard | King of Prussia, PA 19406

**Phone** 800-523-5474 | **Fax** 800-782-6780

**E-Mail** acorn@acornindprod.com | **Web** acornindprod.com



**MAGW-40 Right Angle Grinder**

- Ideal for fast and efficient material removal
- Uses standard 4" OD wheels with 5/8" mounting hub
- Powerful 3/4 hp motor for maximum grinding performance
- Insulated handle for operator convenience and comfort
- Suitable for industrial and production applications
- Variable speed control
- Locking throttle lever helps prevent accidental start-up operation

**Specifications**

Model	MAGW-40
Air Pressure	85 psi
Air Consumption	24.1 CFM
Free Speed	13,000 RPM
Standard Wheel Requirement	4" depressed center
Hose Size Requirement	3/8" ID
Dimension	7-5/16" x 3-3/4"
Weight	3.3 lbs.
Spindle Size	5/8"
Horsepower	3/4 hp

**Additional Accessories**

6mm allen wrench, spanner, threaded adapter PT3/8" x NPT3/8"

## Nitto Kohki RIGHT ANGLE GRINDERS



### MAG-45 / 50 Right Angle Grinders

- Powerful 1 horsepower motor with built-in governor
- Uses standard 4-1/2" wheels with 5/8-11 threaded hub
- Built-in spindle lock for quick and easy wheel installation and removal
- Reversible side handle for right or left-hand operation
- Locking throttle lever helps prevent accidental start-up
- Rear exhaust system
- Insulated housing for operator convenience and comfort

#### Specifications

Model	MAG-45	MAG-50
Air Pressure	85 psi	85 psi
Air Consumption (no load)	30.7 CFM	30.7 FM
Free Speed	12,000 RPM	12,000 RPM
Hose Size Requirement	3/8" ID	3/8" ID
Weight	4.85 lbs.	4.85 lbs.
Wheel Diameter	4-1/2" max.	5" max.
Spindle Size	5/8"-11 threaded	7/8" OD
Horsepower	1 hp	1 hp
Accessories Included	air hose sub ass'y, exhaust hose, side handle ass'y, 4mm allen wrench, pin face wrench, threaded adapter PT3/8" x NPT3/8" air hose sub ass'y, exhaust hose, side handle ass'y, 4mm allen wrench, pin face wrench, threaded adapter PT3/8" x NPT3/8"	
Optional Accessories		5/8"-11 spindle

## Acorn Industrial Products Co

520 Hertzog Boulevard | King of Prussia, PA 19406

Phone 800-523-5474 | Fax 800-782-6780

E-Mail acorn@acornindprod.com | Web acornindprod.com



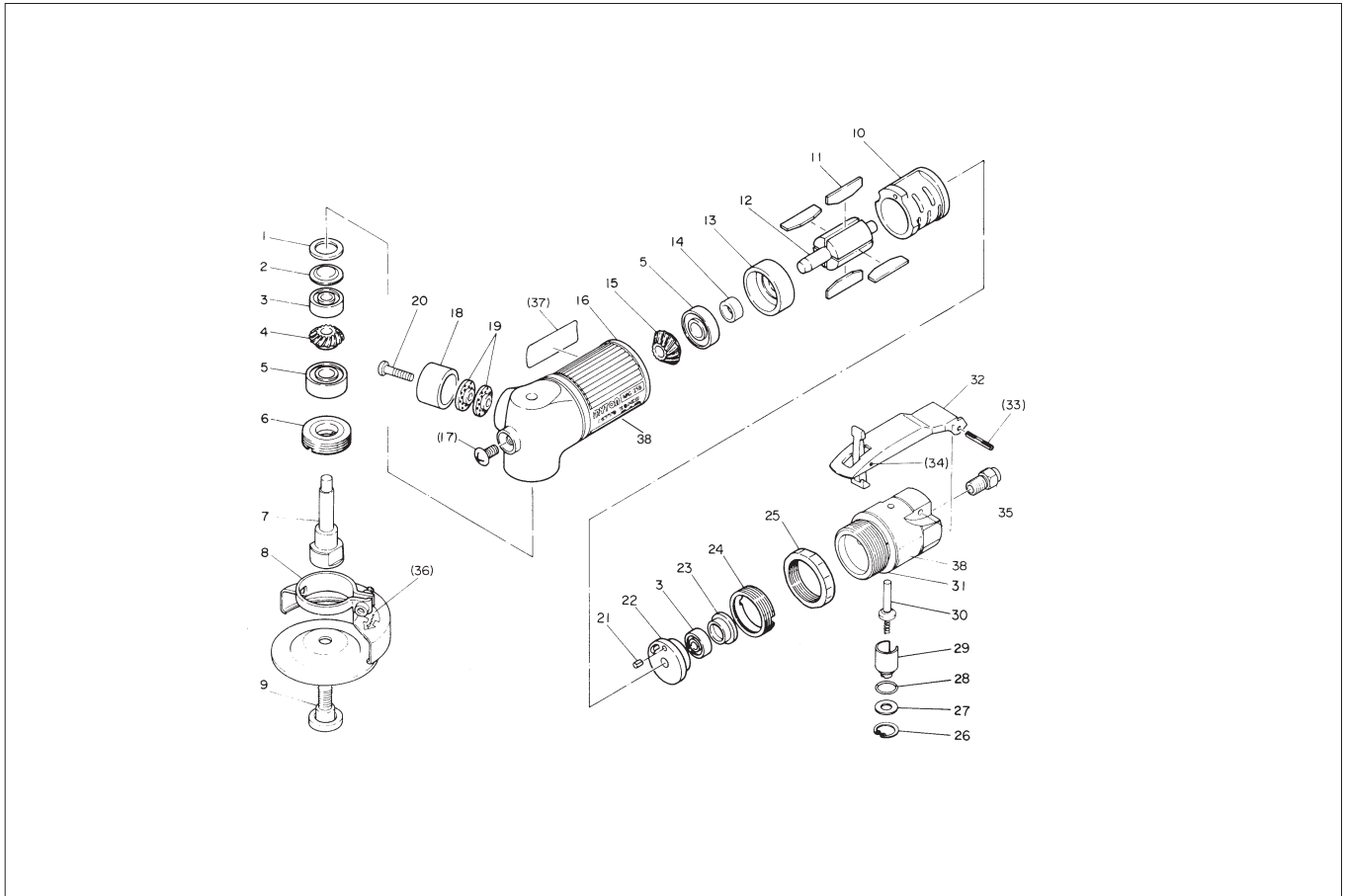
### MAG-70 Right Angle Grinder

- Powerful 1-1/2 horsepower motor delivers maximum grinding performance
- Ideal for industrial and production grinding applications
- Available with threaded 5/8-11 spindle or 7/8" OD mounting hub
- Locking throttle lever helps prevent accidental start-up
- Uses standard 7" diameter wheels
- Variable speed control

#### Specifications

Model	MAG-70
Air Pressure	85 psi
Air Consumption	14.1 CFM
Free Speed	22,000 RPM
Hose Size Requirement	3/8" ID
Dimension	5" x 2-9/16"
Weight	1.2 lbs.
Wheel Diameter	
Spindle Size	3/8"
Horsepower	1/4 hp
Accessories Included	6 mm & 10mm allen wrench, spanner, Threaded adapter PT1/2" x NPT1/2"
Optional Accessories	5/8-11 spindle

# MYTON MAG-25B ASSEMBLY AND PARTS LIST



The part numbers with ( ) are included in the Ass'y parts written above them.

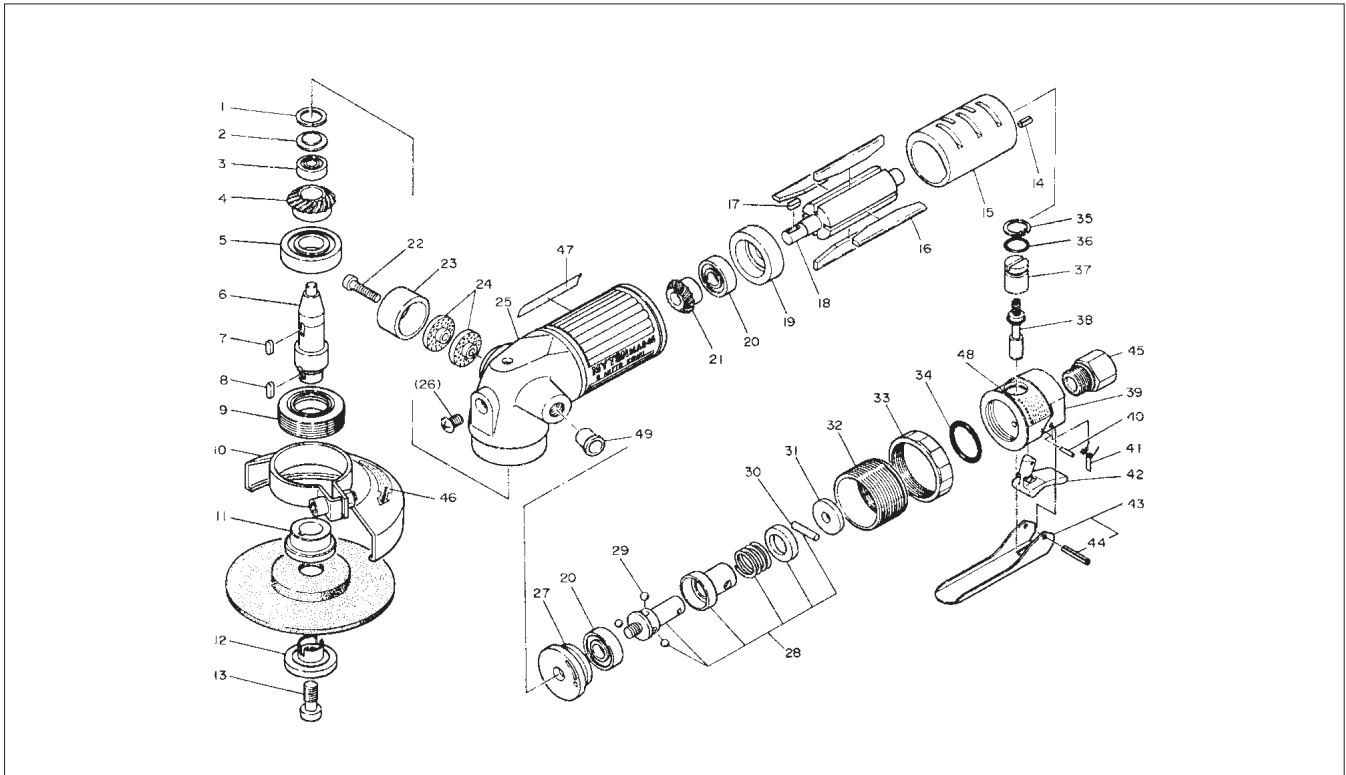
No.	Part No.	Part Name	Q'ty	Price
1	TP10826	Packing	1	
2	TP10100	Bearing Cover	1	
3	TP03933	Ball Bearing R-1760 ZZ	2	
4	TP14225	Gear	1	
5	TP00468	Ball Bearing 608Z	2	
6	TA98808	Bearing Set Screw Ass'y	1 set	
7	TP17961	Spindle	1	
8	TA9A874	Wheel Guard Ass'y	1 set	
36	(TQ02362)	Warning Label for Wheel Guard	1	
9	TP17962	Disk Lock	1	
10	TP14222	Cylinder	1	
11	TA9A295	Blades (4 pcs/set)	1 set	
12	TP14224	Rotor	1	
13	TP14931	End Plate B	1	
14	TP06322	Spacer 8 X 11 X 3	1	
15	TP14221	Pinion	1	
16	TB01216	Housing Sub Ass'y	1 set	
37	(TQ02207)	Label CE-Mark	1	
17	(TP06715)	+ Screw 5 X 8	1	
18	TP14227	Exhaust Cover	1	
19	TP14228	Exhaust Plate	2	
20	TP15164	+ Screw 4 X 6	1	
21	TP00496	Spring Pin 2.5 X 6	1	
22	TP10109	End Plate A	1	
23	TP10110	Cap	1	

No.	Part No.	Part Name	Q'ty	Price
24	TP10098	Lock Nut	1	
25	TP03468	Lock Ring	1	
26	TP03695	Retaining Ring	1	
27	TP06326	Spacer 6 X 12 X 1.2	1	
28	TP11997	O-Ring KS-7	1	
29	TP06325	Adjust Valve	1	
30	TA93070	Valve Stem Ass'y	1 set	
31	TP10118	Valve Body	1	
38	(TQ02380)	Warning Label – MAG-25B	1	
32	TB01152	Lever Ass'y	1 set	
33	(TP00460)	Spring Pin 3 X 22	1	
34	(TP05498)	Spring Pin 2 X 16	1	
38	TQ02351	Grip Tube	1	

## ACCESSORIES

	TB00155	Grinding Disc AC #80 X 58	1	
	TP04004	Hex. Wrench Key 5	1	
	TP00475	Spanner 14	1	
35	TP02236	Reducer PT1/4 X NPT1/4	1	
	TQ02364	Instruction Manual	1	

# MYTON MAGW-40 ASSEMBLY AND PARTS LIST



The part numbers with ( ) are included in the Ass'y parts written above them.

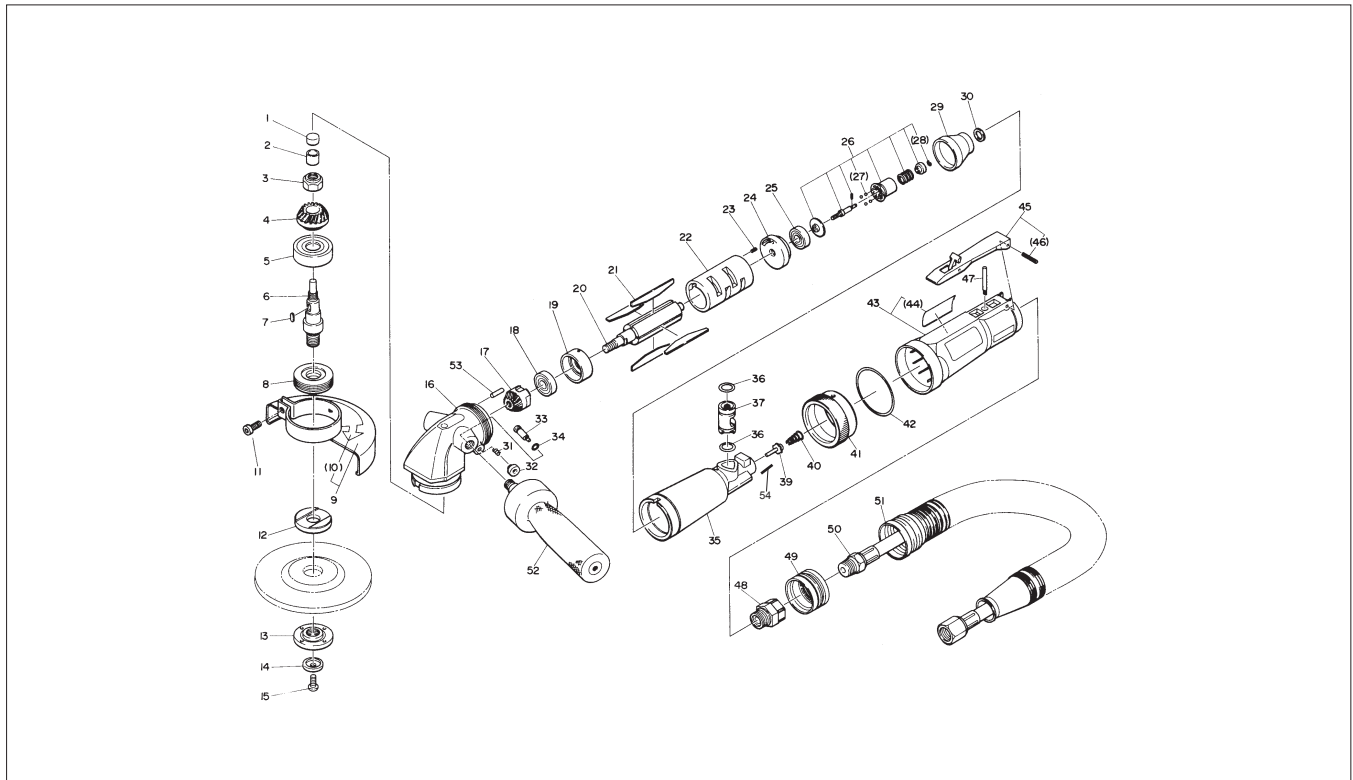
No.	Part No.	Part Name	Q'ty	Price
1	TP10826	Packing	1	
2	TP10100	Bearing Cover	1	
3	TP03933	Bearing R-1760 ZZ	1	
4	TP14036	Gear	1	
5	TP01609	Ball Bearing 6202Z	1	
6	TP14035	Spindle	1	
7	TP00502	Sunk Key 4 X 4 X 9.5	1	
8	TP09933	Sunk Key 4 X 4 X 12	1	
9	TA98634	Bearing Set Screw Ass'y	1 set	
10	TB01677	Wheel Guard Ass'y	1 set	
46	(TQ02357)	Warning Label for Wheel Guard	1	
11	TQ00774	Lock Plate	1	
12	TQ00775	Disk Lock 16	1	
13	TP09932	Hex. Bolt 8 X 20	1	
14	TP04061	Spring Pin 3 X 6	1	
15	TP14031	Cylinder	1	
16	TA9A294	Blades (4 pcs/set)	1 set	
17	TP10130	Sunk Key 3 X 3 X 10	1	
18	TP14033	Rotor	1	
19	TP14034	End Plate B	1	
20	TP10133	Ball Bearing 609 ZZ	2	
21	TP14030	Pinion	1	
22	LP08450	+ Screw 5 X 25	1	
23	TP14041	Exhaust Cover	1	
24	TP14040	Silencer Plate	2	
25	TB04979	Housing Ass'y	1 set	
47	(TQ02207)	Label CE-Mark	1	

No.	Part No.	Part Name	Q'ty	Price
26	(TP06715)	+ Screw 5 X 8	1	
49	LP30720	Plug 9	1	
27	TP10137	End Plate A	1	
28	TA98635	Governor Ass'y	1 set	
29	(CP01140)	Ball 7/32	4	
30	(TP07870)	Parallel Pin 3 X 15.8	1	
31	TP10149	Spring Washer MT-25	1	
32	TQ07319	Governor Adapter	1	
33	TQ07320	Rock Ring	1	
34	TP05531	O Ring S-36	1	
35	TP03473	Retaining Ring C-14	1	
36	TP11992	O Ring KS-9	1	
37	TP04394	Adjust Valve	1	
38	TB05591	Valve Stem Ass'y	1 set	
39	TB05592	Valve Body	1 set	
48	(TQ07316)	Warning Label	1	
40	TP09434	Spring Pin 2 X 12	1	
41	TP14340	Torsion Coil Spring	1	
42	TP14339	Lock Lever	1	
43	TB05590	Throttle Lever Ass'y	1 set	
44	(TP01921)	Spring Pin 3 X 18	1	
45	TQ02349	Reducer M16 X PT3/8	1	

## ACCESSORIES

No.	Part No.	Part Name	Q'ty	Price
	TP00170	Hex. Wrench Key 6	1	
	TP00474	Spanner 17	1	
	TQ06601	Instruction Manual	1	

# MYTON MAG-45 ASSEMBLY AND PARTS LIST



The part numbers with ( ) are included in the Ass'y parts written above them.

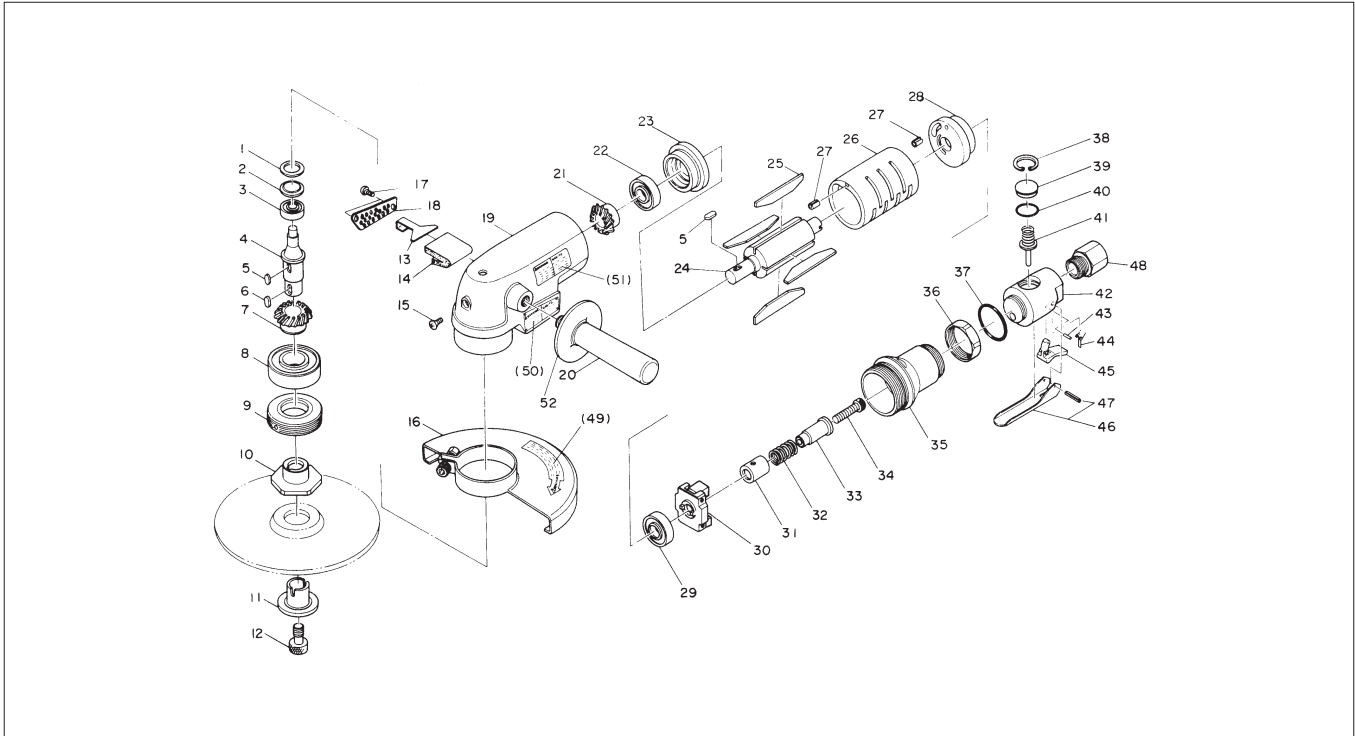
No.	Part No.	Part Name	Q'ty	Price
1	TQ04100	Bearing Cover	1	
2	TQ04099	Needle Bearing HK0810	1	
3	TQ04107	Hex. Nut M10 U Nut	1	
4	TQ04415	Gear 1.25 X 29	1	
5	TP04201	Ball Bearing 6302ZZ	1	
6	TQ04540	Spindle 5/8-11	1	
7	TQ04106	Parallel Key 4 X 4 X 8	1	
8	TB03202	Bearing Set Screw Ass'y	1 set	
9	TB03460	Wheel Guard Ass'y	1 set	
10	(TQ04544)	Warning Label for Wheel Guard	1	
11	(TP10953)	Hex. Socket Screw 6 X 18	1	
12	TQ04545	Driving Flange 22 X 5/8	1	
13	TQ04546	Outer Flange 22 X 5/8-11	1	
14	TQ04604	Washer 6.3 X 21 X 4.5	1	
15	TP16096	Hex. Screw 6 X 15	1	
16	TQ06043	Gear Head	1	
17	TQ04414	Pinion 1.25 X 19	1	
18	TP00498	Ball Bearing 6001ZZ	1	
19	TQ04091	End Plate B	1	
20	TQ04087	Rotor	1	
21	TB03297	Blade Ass'y (4 pcs/set)	1 set	
22	TQ04088	Cylinder	1	
23	TP04061	Spring Pin 3 X 6	1	
24	TQ04090	End Plate A	1	
25	TP00468	Ball Bearing 608Z	1	
26	TB03198	Governor Ass'y	1 set	
27	(CP01181)	Ball 5/32	4	
28	(TP14930)	Retaining Ring E ETW-2.3	1	
29	TQ04097	Governor Cover	1	
30	TQ04110	Washer 9 X 14 X 2.2	1	

No.	Part No.	Part Name	Q'ty	Price
31	TQ04103	Spring 0.6 X 8.3 X 13.75	1	
32	TQ04104	Lock Button	1	
33	TQ04101	Spindle Lock	1	
34	TQ04102	O-Ring SS-060	1	
35	TQ04109	Housing	1	
36	TP11998	O-Ring P-12	2	
37	TQ04111	Adjust Valve	1	
39	TB03205	Throttle Valve Ass'y	1 set	
40	CP00876	Valve Spring	1	
41	TQ04112	Lock Ring	1	
42	TP06625	O-Ring G-45	1	
43	TB03204	Grip Tube Ass'y	1 set	
44	(TQ04542)	Warning Label	1	
45	TB01388	Lever Ass'y	1 set	
46	(TP00460)	Spring Pin 3 X 22	1	
47	TQ04115	Throttle Pin	1	
48	TQ04119	Bushing M16 X RC3/8	1	
49	TQ04130	Exhaust Hose Mount	1	
51	TQ04129	Exhaust Hose	1	
53	TP12618	Parallel Pin 3 X 11.8	1	
54	TP01920	Spring Pin	1	

## ACCESSORIES

No.	Part No.	Part Name	Q'ty	Price
50	TB03208	Air Hose Sub Ass'y	1 set	
	TB03209	Exhaust Hose Ass'y	1 set	
52	TB03216	Side Handle Ass'y	1 set	
	TP01939	Hex. Wrench Key 4	1	
	TQ04125	Pin Face Wrench	1	
	TQ02350	Bushing PT3/8 X NPT3/8	1	
	TQ02364	Instruction Manual	1	

# MYTON MAG-70 ASSEMBLY AND PARTS LIST



The part numbers with ( ) are included in the Ass'y parts written above them.

No.	Part No.	Part Name	Q'ty	Price
1	TP11687	Packing	1	
2	TP11685	Bearing Cover	1	
3	TP00468	Ball Bearing 608Z	1	
4	TP11708	Spindle	1	
5	TP00502	Sunk Key 4 X 4 X 9.5	2	
6	TP09933	Sunk Key 4 X 4 X 12	1	
7	TP11709	Gear	1	
8	TP11707	Ball Bearing 6304ZZ	1	
9	TA97016	Bearing Set Screw Ass'y	1 set	
10	TQ00772	Lock Plate	1	
11	TQ00771	Disk Lock	1	
12	TP11688	Hex. Bolt 12 X 25	1	
13	TP12260	Filter Support	1	
14	TP12261	Filter	1	
15	TP06715	+ Screw 5 X 8	1	
16	TB01700	Wheel Guard Ass'y	1 set	
49	(TQ02357)	Warning Label for Wheel Guard	1	
17	TP02618	+ Screw 4 X 8	2	
18	TP11691	Exhaust Cover	1	
19	TP11693	Housing	1	
50	(TQ02384)	Name Plate MAG-70	1	
51	(TQ02385)	Label CE-Mark	1	
20	TA90586	Side Handle Ass'y	1 set	
52	TQ02387	Grip Guard	1	
21	TP11694	Pinion	1	
22	TP11701	Ball Bearing 6201DU	1	
23	TP11700	End Plate B	1	
24	TP11697	Rotor	1	
25	TA9A292	Blades (4 pcs/set)	1 set	
26	TP11699	Cylinder	1	
27	TP04061	Spring Pin 3 X 6	2	

No.	Part No.	Part Name	Q'ty	Price
28	TP11696	End Plate A	1	
29	TP11695	Ball Bearing 6201Z	1	
30	TA97298	Base Ass'y	1 set	
31	TP11705	Sleeve	1	
32	TP11706	Spring 1.8 X 13.7 X 25.5	1	
33	TP11704	Sleeve Guide	1	
34	TP05648	Hex. Bolt 5 X 45	1	
35	TA9A765	Valve Holder Sub Ass'y	1 set	
36	TP17452	Lock Ring	1	
37	TP17445	O-Ring S-35.5	1	
38	TP10448	Retaining Ring C-24	1	
39	TP10444	Valve Cap	1	
40	TP10714	O-Ring S-22	1	
41	TA96331	Valve Stem Ass'y	1 set	
42	TP16235	Valve Body	1	
43	TP09434	Spring Pin 2 X 12	1	
44	TP14340	Torsion Coil Spring	1	
45	TP14339	Lock Lever	1	
46	TA96253	Throttle Lever Ass'y	1	
47	TP01921	Spring Pin 3 X 18	1	
48	TQ02414	*Reducer M70S*	1	

\*TQ02414 and TQ02427 are to be used together

## ACCESSORIES

	TP00170	Hex. Wrench Key 6	1	
	TQ02427	*Nipple M70S*	1	
	TP11723	Hex. Wrench Key 10	1	
	TP11724	Single Ended Spanner 41	1	
	TP14112	Spindle (5/8"-11")	1	
	TQ02364	Instruction Manual	1	

# DEPRESSED CENTER WHEELS

The Norton line of depressed center wheels has products for every right angle grinder application: NorZon Plus provide the industry's highest productivity; Charger Plus give great performance and Gemini and Norton masonry offer general purpose value.

## Typical Applications

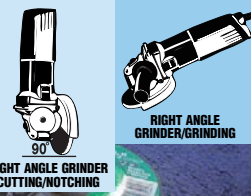
- Metal fabrication
- Petrochemical maintenance
- All weld grinding
- Shipbuilding
- Foundry – notching and removing gates and risers
- Pipeline – root pass grinding, pipe beveling and repair
- Construction – masonry/concrete fabrication



TYPE 27

TYPE 28

TYPE 29



### BEST NorZon Plus Depressed Center Wheels – Type 27 and 28

FEATURES	BENEFITS
<ul style="list-style-type: none"> <li>• Premium, combination of Norton SG (ceramic aluminum oxide) and NorZon (zirconia alumina)</li> </ul>	<ul style="list-style-type: none"> <li>• 50 to 200% better overall performance vs. competitive zirconia wheels</li> <li>• Lowest total grinding cost; highest productivity</li> <li>• Up to 10X the performance of aluminum oxide wheels</li> <li>• 50% or better cut rate than competitive wheels</li> <li>• Excellent performance on all grinding jobs from gray iron to exotic alloys and stainless steel</li> </ul>
<ul style="list-style-type: none"> <li>• An advanced bond system</li> </ul>	<ul style="list-style-type: none"> <li>• The fastest cutting zirconia wheel on the market; easy on the operator and equipment</li> </ul>
<ul style="list-style-type: none"> <li>• NorZon Plus Long Life</li> </ul>	<ul style="list-style-type: none"> <li>• Extra long life, same fast cut; ideal for high-powered grinders</li> </ul>
<ul style="list-style-type: none"> <li>• Extra-thin .045" RightCut wheels</li> </ul>	<ul style="list-style-type: none"> <li>• Quick, cool cutting action, minimal kerf loss</li> <li>• Up to 30% longer life and faster cut rate, for fewer wheel changes</li> </ul>
<ul style="list-style-type: none"> <li>• NorZon Plus 1/8" thick wheels</li> </ul>	<ul style="list-style-type: none"> <li>• 30 – 50% (and in some cases 100%) improvement in life, while maintaining an extremely smooth grinding and cutting action</li> </ul>

**new!**

**improved!**



**Made in U.S.A.**

### BETTER Charger Plus Depressed Center Wheels – Type 27 and 28

FEATURES	BENEFITS
<ul style="list-style-type: none"> <li>• A blend of zirconia alumina and aluminum oxide grains – with more NorZon (zirconia) grain</li> </ul>	<ul style="list-style-type: none"> <li>• 3 times the life of aluminum oxide wheels</li> <li>• Ideal for stainless steel and carbon steel applications and efficiently grinds a variety of material from alloys to gray iron</li> <li>• Excellent performance to price ratio lowers total grinding costs</li> </ul>
<ul style="list-style-type: none"> <li>• FastCut Stainless Steel wheels</li> </ul>	<ul style="list-style-type: none"> <li>• Full range of iron-, sulfur-, and chlorine-free wheels, ideal for nuclear industry</li> <li>• 2 to 3X performance vs. competitors' wheels</li> </ul>
<ul style="list-style-type: none"> <li>• Extra-thin .045" RightCut wheels</li> </ul>	<ul style="list-style-type: none"> <li>• Up to 30% longer life and faster cut rate, for fewer wheel changes</li> </ul>

**improved!**



**Made in U.S.A.**

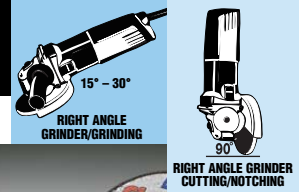
### BETTER Charger Foundry Depressed Center Wheels – Type 27

FEATURES	BENEFITS
<ul style="list-style-type: none"> <li>• A unique blend of aggressive zirconia alumina and versatile silicon carbide abrasives</li> </ul>	<ul style="list-style-type: none"> <li>• Ideal for a broad range of foundry applications – including ductile/gray iron, steel, nonferrous, soft metals (brass, bronze, copper) and dirty, scale-covered castings</li> </ul>
<ul style="list-style-type: none"> <li>• Advanced bond system</li> </ul>	<ul style="list-style-type: none"> <li>• Maximizes cutting ability while minimizing wheel wear – reducing total wheel cost</li> </ul>
<ul style="list-style-type: none"> <li>• Triple-reinforced, 1/8" thick wheels</li> </ul>	<ul style="list-style-type: none"> <li>• Designed to remove and grind gates and risers</li> </ul>
<ul style="list-style-type: none"> <li>• 1/4" thick wheels have coarse grit dispersed throughout the wheel</li> </ul>	<ul style="list-style-type: none"> <li>• May be used on bottom and face of wheel to clean parting lines, pads, slag, and scale</li> </ul>
<ul style="list-style-type: none"> <li>• 9" heavy-duty, triple-reinforced</li> </ul>	<ul style="list-style-type: none"> <li>• Designed to withstand the most aggressive foundry applications</li> </ul>



**Made in U.S.A.**

# DEPRESSED CENTER WHEELS



## BETTER Charger AVOS and FLEX Depressed Center Wheels – Type 29

FEATURES	BENEFITS
<ul style="list-style-type: none"> <li>Aluminum oxide grain in a uniquely patterned face (with button “nubs”)</li> </ul>	<ul style="list-style-type: none"> <li>Cooler operating; prevents digging, snagging, and loading through greater swarf removal</li> <li>No offensive odors generated while grinding</li> <li>Excellent for grinding and finishing stainless steel, carbon steel, and aluminum</li> </ul>
<ul style="list-style-type: none"> <li>Type 29 conical shape: Non-hubbed: used at a 15° angle Hubbed: can grind on wheel face</li> </ul>	<ul style="list-style-type: none"> <li>Shallow grinding area permits larger contact area with less gouging of workpiece</li> <li>Smooth cutting action; let the wheels do the work</li> <li>Ideal for getting into tight spaces, smoothing corners and curves, and polishing and blending welds on flat surfaces</li> </ul>
<ul style="list-style-type: none"> <li>AVOS (Allows View of Surface): innovative shape and patented design</li> </ul>	<ul style="list-style-type: none"> <li>Provide complete vision of the grinding zone</li> <li>Operator can grind more effectively with less work</li> <li>Allow interrupted cut which reduces heat on workpiece</li> </ul>

expanded offering!



★ Made in U.S.A.

## GOOD Gemini Aluminum Oxide Depressed Center Wheels – Type 27 and 28

SPECIFICATION	APPLICATION
<ul style="list-style-type: none"> <li>Quality aluminum oxide</li> </ul>	<ul style="list-style-type: none"> <li>Consistent, maximum performance of aluminum oxide wheels at a competitive price</li> <li>Ideal for small job shops on a variety of metalworking applications</li> </ul>
<ul style="list-style-type: none"> <li>Gemini Fast Cut</li> </ul>	<ul style="list-style-type: none"> <li>Quick stock removal on hard metals</li> </ul>
<ul style="list-style-type: none"> <li>Gemini Long Life</li> </ul>	<ul style="list-style-type: none"> <li>Exceptional life and cut rate on carbon and stainless steels</li> </ul>
<ul style="list-style-type: none"> <li>Gemini Aluminum – contain no wax or rubber fillers</li> </ul>	<ul style="list-style-type: none"> <li>Grinding aluminum and soft metals without loading</li> </ul>
<ul style="list-style-type: none"> <li>Gemini Stainless Steel; 3/32" and 1/4" thick; contaminant free: no iron, sulfur or chlorine</li> </ul>	<ul style="list-style-type: none"> <li>Ideal for nuclear industry</li> <li>All kinds of stainless steel and various hard alloys</li> </ul>
<ul style="list-style-type: none"> <li>3/32" and 5/32" thick</li> </ul>	<ul style="list-style-type: none"> <li>Pipe and general cut-off applications</li> </ul>
<ul style="list-style-type: none"> <li>.045" RightCut wheels with clean bond</li> </ul>	<ul style="list-style-type: none"> <li>Minimal kerf loss and fast cut rate</li> <li>Up to 30% longer life and faster cut rate, for fewer wheel changes</li> </ul>

new!

improved!



## GOOD Norton Masonry Depressed Center Wheels – Type 27

FEATURES	BENEFITS
<ul style="list-style-type: none"> <li>Masonry – sharp silicon carbide</li> </ul>	<ul style="list-style-type: none"> <li>Engineered for all masonry materials such as concrete, brick and asphalt</li> </ul>
<ul style="list-style-type: none"> <li>Low initial cost per wheel</li> </ul>	<ul style="list-style-type: none"> <li>Ideal for on-site and small-unit jobs</li> </ul>
<ul style="list-style-type: none"> <li>Display case packaging</li> </ul>	<ul style="list-style-type: none"> <li>Promotes walk-in, self-service selling and easy restocking</li> </ul>



## GOOD Gemini Flexible Blending/Finishing Depressed Center Wheels – Type 27

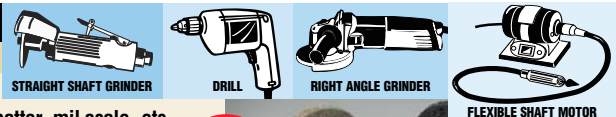
FEATURES	BENEFITS
<ul style="list-style-type: none"> <li>Aluminum oxide grain in a unique formulation</li> </ul>	<ul style="list-style-type: none"> <li>Better blending, finishing and polishing of stainless steel, structural steel, cast iron welds and burrs</li> <li>Cool cutting; leaves no burn marks</li> <li>Meets nuclear industry standards</li> </ul>
<ul style="list-style-type: none"> <li>Flexible</li> </ul>	<ul style="list-style-type: none"> <li>Excellent control of finish quality and removal rate for light stock removal</li> </ul>
<ul style="list-style-type: none"> <li>Available in 36 grit</li> </ul>	<ul style="list-style-type: none"> <li>Ideal for light stock removal</li> </ul>
<ul style="list-style-type: none"> <li>Available in 60 grit</li> </ul>	<ul style="list-style-type: none"> <li>Designed for finishing applications</li> </ul>

expanded offering!



## BEST Bear-Tex Non-Woven Depressed Center Wheels – Type 27

FEATURES	BENEFITS
<ul style="list-style-type: none"> <li>Thick, strong synthetic fibers and extra coarse grit bonded with a durable, smear-resistant adhesive</li> </ul>	<ul style="list-style-type: none"> <li>Ideal for surface preparation, conditioning and cleaning and the removal of rust, paint, weld spatter, mil scale, etc.</li> </ul>
<ul style="list-style-type: none"> <li>Open web construction</li> </ul>	<ul style="list-style-type: none"> <li>Minimizes loading</li> </ul>
<ul style="list-style-type: none"> <li>Conformable</li> </ul>	<ul style="list-style-type: none"> <li>Follows difficult part profiles for easy cleaning of uneven surfaces</li> </ul>
<ul style="list-style-type: none"> <li>Used with portable tools</li> </ul>	<ul style="list-style-type: none"> <li>Easy and safe to use especially in difficult to reach areas</li> </ul>

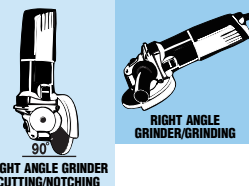


new!





# DEPRESSED CENTER WHEELS



## Highest Productivity and Performance in Grinding

Product				
	NorZon Plus – BEST	Charger Plus – BETTER	Gemini – GOOD	COMPETITOR
Life				
	wheel wear = 7 grams	wheel wear = 15 grams	wheel wear = 23 grams	wheel wear = 28 grams
Metal Removal				
	metal removed = 295 grams	metal removed = 265 grams	metal removed = 200 grams	metal removed = 174 grams
Overall Performance	<b>6X</b> grinding ratio = 42	<b>3X</b> grinding ratio = 18	<b>1.5X</b> grinding ratio = 9	<b>1X</b> grinding ratio = 6
Approximate Consumer Price*	\$8.78	\$4.52	\$2.56	\$2.14
Current Wheel Usage (monthly)	—	—	—	100
If customer switched to Norton brand, usage would be (based on performance), in wheels:	14	33	75	—
To remove same amount of material, cost of wheels would be:	\$122.98	\$149.16	\$192.00	\$214.00
Add in labor cost of additional wheel changes (calculated at 2 minutes @ \$18.00 per hour)	\$8.40	\$19.80	\$45.00	\$60.00
Total cost of using each wheel:	\$131.38	\$168.96	\$237.00	\$274.00
Savings:	<b>52%</b>	<b>38%</b>	<b>14%</b>	<b>0%</b>

BASED ON ESTIMATED US PRICING.

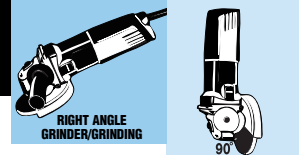


### Norton Fine, Hard Back Depressed Center Wheels Boost Productivity and Wheel Life Versus Competitors' Monolithic Design (2 coarse layers)

Our fine, hard back (a finer-grit mixture in the top half of the grinding wheel) limits premature shedding or “spalling” and allows for a smoother grinding action from the periphery to the hub.

- At the proper grinding angle, a sharp bevel is produced at the wheel periphery
- As the wheel wears, this thin edge become susceptible to stress
- A coarse grit back is much more likely to break away prematurely resulting in unnecessary wheel loss and quite possibly an injury to operator and others

# DEPRESSED CENTER WHEELS



## Application Guide

WHEEL TYPE	APPLICATIONS
.045", 1/16", 3/32" Thick Type 27	Cutting only, where fast cutting and low kerf loss are desired. Ideal for pipe cutting.
.125" Thick Type 27	Cutting and cleaning root pass welds.
1/8" Thick Type 27	Cutting-off, notching and light side grinding.
1/4" Thick Fast Cut Type 27	Grinding with low horsepower and electric grinders or where low pressure is used.
1/4" Thick Long Life Type 27	Grinding with high horsepower machines (3 hp or higher) and heavy pressure; flame cut and other severe applications.
1/8", 5/32" Thick Pipe Notchers Type 27 – Triple reinforced	Cutting on the face of the wheel for root pass applications; cleaning weld joints or cutting out weld on pipe repair.
1/8" Thick Foundry Notchers Type 27 – Triple reinforced	For grinding steel and dirty/scale-covered castings; removing and cleaning gates and risers.
1/4" Thick Foundry Snaggers Type 27	Grinding on bottom and face of wheel; cleaning parting lines, pads and slag; smoothing weld seams.
1/4" Thick Heavy-Duty Foundry Type 27	Most aggressive foundry applications. Triple-reinforced
1/4" Thick Saucers Type 28	Smooth, gouge-free grinding at shallow angles.
1/8" Thick Flex, AVOS Type 29	Polishing and blending applications.

RIGHT ANGLE GRINDER/GRINDING	RIGHT ANGLE GRINDER CUTTING/NOTCHING
	■
	■
■	■
■	
■	
	■
	■
	■
■	
■	

## Depressed Center Wheel Starting Recommendations by Material

MATERIALS:	HEAVY-DUTY GRINDING BEST PERFORMANCE	GENERAL-DUTY GRINDING BETTER VALUE	LIGHT GRINDING INITIAL VALUE	BLENDING AND FINISHING	CUTTING	SURFACE PREPARATION
Angle/Channel Iron Bar Stock/I-Beams Carbon/High Tensile Steel Metal Studs/Tubing	NorZon Plus Type 27	Charger Plus Type 27	Gemini Type 27	Charger Flex & AVOS Type 29	NorZon Plus Type 27	Bear-Tex Rapid Strip & Rapid Finish
Cast Iron/Pipe	NorZon Plus Type 27	Charger Plus Type 27	Gemini Type 27	Charger Flex & AVOS Type 29	NorZon Plus Pipe Notcher	Rapid Strip & Rapid Finish
Stainless/Alloys	NorZon Plus Type 27	Charger SS Type 27	Gemini SS Type 27	Charger Flex & AVOS SS Type 29	NorZon Plus Type 27	Rapid Strip & Rapid Finish
Aluminum/Brass/Bronze	–	–	Gemini ALU Type 27	Charger Flex & AVOS ALU Type 29	Gemini ALU Type 27	Rapid Strip & Rapid Finish
Asphalt/Brick/Concrete	Masonry Type 27	Masonry Type 27	Masonry Type 27	Masonry Type 27	Masonry Type 27	Rapid Strip & Rapid Finish
Fiberglass/Plastic	–	Charger Flex Type 29	Gemini Flexible Type 27	Charger Flex & AVOS Type 29	Gemini Type 27	Rapid Strip & Rapid Finish
Paint/Rust	–	–	Metal Type 27	–	–	Rapid Strip & Rapid Finish

## Depressed Center Wheel Competitive Cross Reference

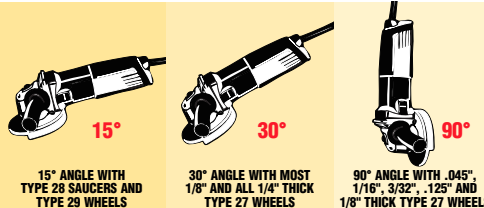
NORTON	FLEXOVIT	METABO	PFERD	SAIT	TYROLIT	WALTER
NorZon Plus	FLEXON		ZA-SG	Attacker		A-20-XX
Charger Plus	FLEXON	ZA24	ZA-SG	Z-Tech	1ZA30QBFX	A-20-XX
Charger Flex	Flexcel			Challenger	Rondeller	Roteller
Gemini Fast Cut			A-PS	A24N	A30PBF	
Gemini	A24/A30T	A24R/T	A-SG	A24R,A24T	A30RBF	A-24-HPS
Gemini Aluminum	A24ALU	A36M	A-W-ALU	A46N	A36NBFX	A-24-ALU
Norton Metal	A30S	A24N		A24N		
Norton Masonry	C24/30T	C24		C24N		C-24

## TECHtips

- For maximum performance, run the grinder at the highest possible speed marked on the wheel.
- Hold your right angle grinder at the correct angle.



It is the user's responsibility to refer to and comply with ANSI B7.1

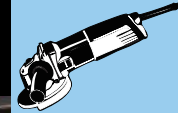


Unique, patented mini-mount hub used on 4-1/2" and 5" depressed center wheels provides up to 30% more wheel life because the hub covers just a small surface area, providing maximum grinding area exposure and usage.

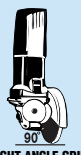
# DEPRESSED CENTER WHEELS

DEPRESSED CENTER WHEELS

8



RIGHT ANGLE GRINDER/GRINDING



RIGHT ANGLE GRINDER CUTTING/NOTCHING



**BEST  
NORZON PLUS**



**BETTER  
CHARGER PLUS**



**GOOD  
GEMINI**

SIZE: D X T X H	MAX RPM	STD PKG	PART NO.	UPC NO.	PART NO.	UPC NO.	PART NO.	UPC NO.
<b>.045", 1/16" STEEL / STAINLESS – CUTTING – TYPE 27</b>								
4 x .045 x 5/8	15,280	20					RC4G27	66252833840
4-1/2 x .045 x 5/8-11	13,580	20	RC45HNZP27	66252830748	RC45HCH27	66252832009	RC45HG27	66252819549
4-1/2 x .045 x 7/8	13,580	20	RC45NZP27	66252830742	RC45CH27	66252830125	RC45G27	66252819548
5 x .045 x 5/8-11	12,225	20					RC5HG27	66252830586
5 x .045 x 7/8	12,225	20	RC5NZP27	66252830744	RC5CH27	66252830126	RC5G27	66252819550
6 x .045 x 5/8-11	10,185	20					RC6HG27	66252830587
6 x .045 x 7/8	10,185	20	RC6NZP27	66252830745	RC6CH27	66252830127	RC6G27	66252819551
7 x 1/16 x 7/8	8,600	20					RC7G27	66252912626
9 x 1/16 x 5/8-11	6,600	10					RC9HG27	66253019115

THESE WHEELS ARE TO BE USED FOR CUTTING ONLY.

<b>.125", 1/8" STEEL / STAINLESS – CUTTING – TYPE 27</b>								
4 x .125 x 3/8	15,280	20	DC412538NZP	66243529883				
4-1/2 x 3/32 x 7/8	13,580	20					DC45332G	66252835320
4-1/2 x .125 x 5/8-11	13,580	20	DC45125HNZP	66252815010			DC45125HG	66252813301
4-1/2 x .125 x 7/8	13,580	20	DC45125NZP	66252830443			DC45125G	66252801860
5 x .125 x 7/8	12,225	20					DC5125G	66252801862
7 x .125 x 5/8-11	8,600	10	DC7125HNZP	66252912625				
7 x .125 x 7/8	8,600	20	DC7125NZP	66252912624			DC7125G	66252900619

THESE WHEELS ARE TO BE USED FOR CUTTING ONLY.

expanded offering!

<b>1/8" STEEL – PIPE NOTCHING – TYPE 27</b>								
5 x 5/32 x 7/8	13,580	20					DC5532G	66252835579
6 x 5/32 x 7/8	10,185	20					DC6532G	66252835580
7 x 1/8 x 5/8-11	8,600	10	DC718HNZPIPE	66252939184				
7 x 5/32 x 7/8	8,600	20					DC7532G	66252835581
9 x 1/8 x 5/8-11	6,600	10	DC918HNZPIPE	66253049066				

<b>1/8" STEEL/STAINLESS – CUTTING/NOTCHING/LIGHT GRINDING – TYPE 27</b>								
3 x 1/8 x 3/8	18,000	20	DC318NZP	66243528697				
4 x 1/8 x 3/8	15,280	20	DC41838NZP	66243529884	DC41838CH	66243529893	DC41838G	66243529686
4 x 1/8 x 5/8	15,280	20	DC418NZP	66243529885	DC418CH	66243529851	DC418G	66243530619
4-1/2 x 1/8 x 5/8-11	13,580	20	DC4518HNZP	66252830445	DC4518HCH	66252829853	DC4518HG	66252830435
4-1/2 x 1/8 x 7/8	13,580	20	DC4518NZP	66252830444	DC4518CH	66252829854	DC4518G	66252830609
5 x 1/8 x 5/8-11	12,225	20	DC518HNZP	66252832398	DC518HCH	66252829857		
5 x 1/8 x 7/8	12,225	20	DC518NZP	66252830789	DC518CH	66252829858	DC518G	66252830614
6 x 1/8 x 5/8-11	10,185	10					DC618HG	66252833965
6 x 1/8 x 7/8	10,185	20			DC618CH	66252809367	DC618G	66252801864
7 x 1/8 x 5/8-11	8,600	10	DC718HNZP	66252938855	DC718HCH	66252929862	DC718HG	66252939259
7 x 1/8 x 7/8	8,600	20	DC718NZP	66252938854	DC718CH	66252929863	DC718G	66252939207
9 x 1/8 x 5/8-11	6,600	10	DC918HNZP	66253048897	DC918HCH	66253029866	DC918HG	66253048983
9 x 1/8 x 7/8	6,600	20	DC918NZP	66253048896	DC918CH	66253029867	DC918G	66253048994

**Depressed Center Part Number Key**

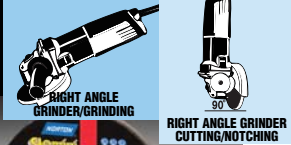
EXAMPLE: DC 45 14 H CH SS

WHEEL TYPE	DIAMETER	THICKNESS	HUB/HOLE SIZE	PRODUCT GROUP	MODIFIER
DC = DEPRESSED CENTER	45 = 4-1/2"	14 = 1/4"	H = 5/8-11 HUB	CH = CHARGER	SS = STAINLESS STEEL
RC = RIGHT CUT					FC = FAST CUT

**STAINLESS  
STEEL/METAL**

**NORTON**

# DEPRESSED CENTER WHEELS



BEST  
NORZON PLUS
BETTER  
CHARGER PLUS
GOOD  
GEMINI, NORTON METAL

SIZE: D X T X H	MAX RPM	STD PKG	PART NO.	UPC NO.	PART NO.	UPC NO.	PART NO.	UPC NO.
<b>1/4" STEEL / STAINLESS – GRINDING – TYPE 27</b>								
3 x 1/4 x 3/8	18,000	20	DC314NZP	66243528809			DC314G	66243528855
4 x 1/4 x 3/8	15,280	20	DC41438NZP	66243529886	DC41438CH	66243529899	DC41438G	66243529748
4 x 1/4 x 5/8	15,280	20	DC414NZP	66243529887	DC414CH	66243529852	DC414GFC DC414G	66243519884 66243530620
4-1/2 x 3/16 x 7/8	13,580	20	DC45316NZP	66252830446			DC45316G	66252830575
4-1/2 x 1/4 x 5/8-11	13,580	20	DC4514HNZP DC4514HNZPLL	66252828804 66252835576	DC4514HCH	66252829855	DC4514HGFC DC4514HG	66252817084 66252830432
4-1/2 x 1/4 x 7/8	13,580	20	DC4514NZP	66252828803	DC4514CH	66252829856	DC4514GFC DC4514G	66252830612 66252830611
5 x 1/4 x 5/8-11	12,225	20	DC514HNZP DC514HNZPLL	66252828806 66252835577	DC514HCH	66252829859		
5 x 1/4 x 7/8	12,225	20	DC514NZP	66252828805	DC514CH	66252829861	DC514GFC DC514G	66252830617 66252830615
6 x 1/4 x 5/8-11	10,185	10			DC614HCH	66252832391	DC614HG	66252832390
6 x 1/4 x 7/8	10,185	20	DC614NZP	66252809376	DC614CH	66252809372	DC614G	66252801865
7 x 1/4 x 5/8-11	8,600	10	DC714HNZP DC714HNZPLL	66252917881 66252835578	DC714HCH	66252929864	DC714HGFC DC714HG	66252940147 66252940148
7 x 1/4 x 7/8	8,600	20	DC714NZP	66252917880	DC714CH	66252929865	DC714GFC DC714G	66252940099 66252940098
9 x 1/4 x 5/8-11	6,600	10	DC914HNZP DC914HNZPLL	66253021634 66252830728	DC914HCH	66253029868	DC914HGFC DC914HG	66253049105 66253049104
9 x 1/4 x 7/8	6,600	20	DC914NZP	66253021633	DC914CH	66253029869	DC914GFC DC914G	66253049077 66253048991

## STAINLESS STEEL – CUTTING/PIPE NOTCHING/LIGHT GRINDING – TYPE 27

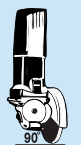
4-1/2 x 3/32 x 5/8-11	13,580	20					DC45332HGSS	66252823102
4-1/2 x 3/32 x 7/8	13,580	20					DC45332GSS	66252823103
4-1/2 x 1/8 x 5/8-11	13,580	20			DC4518HCHFC	66243578249		
4-1/2 x 1/8 x 7/8	13,580	20			DC4518CHFC	66243578248		
4-1/2 x 1/4 x 5/8-11	13,580	20			DC4514HCHFC	66243578251	DC4514HGSS	66252819568
4-1/2 x 1/4 x 7/8	13,580	20			DC4514CHFC	66243578250	DC4514GSS	66252819567
5 x 3/32 x 7/8	12,225	20					DC5332GSS	66252823106
5 x 1/8 x 5/8-11	12,225	20			DC518HCHFC	66243578253		
5 x 1/8 x 7/8	12,225	20			DC518CHFC	66243578252		
5 x 1/4 x 5/8-11	12,225	20			DC514HCHFC	66243578255		
5 x 1/4 x 7/8	12,225	20			DC514CHFC	66243578254	DC514GSS	66252819570
6 x 3/32 x 7/8	10,185	20					DC6332GSS	66252832487
6 x 1/8 x 5/8-11	10,185	10			DC618HCHFC	66243578257		
6 x 1/8 x 7/8	10,185	20			DC618CHFC	66243578256		
6 x 1/4 x 5/8-11	10,185	10			DC614HCHFC	66243578259		
6 x 1/4 x 7/8	10,185	20			DC614CHFC	66243578258		
7 x 3/32 x 7/8	8,600	20					DC7332GSS	66252914638
7 x 1/8 x 5/8-11	8,600	10			DC718HCHFC	66243578241		
7 x 1/8 x 7/8	8,600	20			DC718CHFC	66243578240		
7 x 1/4 x 5/8-11	8,600	10			DC714HCHFC	66243578243		
7 x 1/4 x 7/8	8,600	20			DC714CHFC	66243578242		
9 x 1/8 x 5/8-11	6,600	10			DC918HCHFC	66243578245		
9 x 1/8 x 7/8	6,600	20			DC918CHFC	66243578244		
9 x 1/4 x 5/8-11	6,600	10			DC914HCHFC	66243578247		
9 x 1/4 x 7/8	6,600	20			DC914CHFC	66243578246		

3/32" WHEELS ARE TO BE USED FOR CUTTING ONLY.

# DEPRESSED CENTER WHEELS



RIGHT ANGLE GRINDER/GRINDING



RIGHT ANGLE GRINDER CUTTING/NOTCHING



**BEST NORZON PLUS**      **BETTER CHARGER PLUS**      **GOOD GEMINI, NORTON MASONRY**

**SIZE: D X T X H      MAX RPM      STD PKG      PART NO.      UPC NO.      PART NO.      UPC NO.      PART NO.      UPC NO.**

## 1/8", 1/4" ALUMINUM – GRINDING / BLENDING – TYPE 27

4 x 1/4 x 5/8	15,280	20					DC414GALU	66243529741
4-1/2 x 1/8 x 5/8-11	13,580	20					DC4518HGALU	66252819555
4 x 1/2 x 1/8 x 7/8	13,580	20					DC4518GALU	66252819554
4-1/2 x 1/4 x 5/8-11	13,580	20					DC4514HGALU	66252830433
4-1/2 x 1/4 x 7/8	13,580	20					DC4514GALU	66252830627
5 x 1/4 x 7/8	12,225	20					DC514GALU	66252823273
7 x 1/4 x 5/8-11	8,600	10					DC714HGALU24	66252940514
							DC714HGALU46	66252940515
7 x 1/4 x 7/8	8,600	20					DC714GALU24	66252940516
9 x 1/4 x 5/8-11	6,600	10					DC914HGALU	66253049045

## 1/8", 1/4" FOUNDRY – GRINDING / CUTTING – TYPE 27

4 X 1/4 X 3/8	15,280	20			DC41438CHF	66243531504		
4 X 1/4 X 5/8	15,280	20			DC414CHF	66243531502		
4-1/2 X 1/8 X 5/8-11	13,580	20			DC4518HCHF	66252824508		
4-1/2 X 1/8 X 7/8	13,580	20			DC4518CHF	66252824504		
4-1/2 X 1/4 X 5/8-11	13,580	20			DC4514HCHF	66252824509		
4-1/2 X 1/4 X 7/8	13,580	20			DC4514CHF	66252824505		
7 x 1/8 x 5/8-11	8,600	10			DC718HCHF	66252915529		
7 x 1/4 x 5/8-11	8,600	10			DC714HCHF	66252915528		
7 X 1/4 X 7/8	8,600	20			DC714CHF	66252915527		
9 x 1/8 x 5/8-11	6,600	10			DC918HCHF	66253018579		
9 x 1/8 x 7/8	6,600	20			DC918CHF	66253018574		
					DC918CHFS	66253018940		
9 x 1/4 x 5/8-11	6,600	10	DC914HNZPF	66253007014	DC914HCHF	66253018580		
					DC914HCHFHD	66253020902		
9 x 1/4 x 7/8	6,600	20	DC914NZPF	66253007013	DC914CHF	66253018575		
			DC914NZPFHD	66252832897	DC914CHFHD	66253020901		

## 1/8", 1/4" MASONRY – GRINDING / CUTTING – TYPE 27

4 x 1/8 x 5/8	15,280	10					DC418MA	07660775914
4 x 1/4 x 5/8	15,280	10					DC414MA	07660775912
4-1/2 x 1/8 x 7/8	13,580	10					DC4518MA	07660775908
4-1/2 x 1/4 x 5/8-11	13,580	5					DC4514HMA	07660775993
4-1/2 x 1/4 x 7/8	13,580	10					DC4514MA	07660775944
5 x 1/4 x 7/8	12,225	5					DC514MA	07660775902
7 x 1/4 x 5/8-11	8,600	5					DC714HMA	07660775942
9 x 1/4 x 5/8-11	6,600	5					DC914HMA	07660775937

THESE 1/8" MASONRY WHEELS ARE TO BE USED FOR CUTTING ONLY.

### Depressed Center Part Number Key

EXAMPLE: DC 45 14 H CH SS

WHEEL TYPE	DIAMETER	THICKNESS	HUB/HOLE SIZE	PRODUCT GROUP	MODIFIER
DC = DEPRESSED CENTER	45 = 4-1/2"	14 = 1/4"	H = 5/8-11 HUB	CH = CHARGER	SS = STAINLESS STEEL
RC = RIGHT CUT					FC = FAST CUT

ALUMINUM  
FOUNDRY  
MASONRY

# DEPRESSED CENTER WHEELS



**BEST NORZON PLUS**      **BETTER CHARGER PLUS**      **GOOD GEMINI**

SIZE: D X T X H      MAX RPM      STD PKG      PART NO.      UPC NO.      PART NO.      UPC NO.      PART NO.      UPC NO.

## 1/4" SAUCER – STEEL / STAINLESS – TYPE 28

7 x 1/4 x 5/8-11	8,600	10	DS714HNZP	66252905369	DS714HCH	66252905367	DS714HG	66252940149
7 x 1/4 x 7/8	8,600	20	DS714NZP	66252905368			DS714G	66252940095
9 x 1/4 x 5/8-11	6,600	10	DS914HNZP	66253006335	DS914HCH	66253006334	DS914HG	66253049106
9 x 1/4 x 7/8	6,600	20					DS914G	66253049081

expanded offering!

## 1/8" FLEXIBLE-STEEL/STAINLESS/ALUMINUM-BLENDING-TYPE 27

2 x 1/8 x 3/8	30,560	5					DC2A60	66252835632
							DC2A80	66252835633
							DC2A120	66252835634
4 x 1/8 x 5/8*	13,500	20					DC4GFL36	66243529721
							DC4GFL60	66243529722
4-1/2 x 1/8 x 7/8*	12,000	20					DC45GFL36	66252830424
							DC45GFL60	66252830425
7 x 1/8 x 5/8-11	7,750	10					DC7HGFL36	66252939024
7 x 1/8 x 7/8*	7,750	20					DC7GFL36	66252939028

\* USE WITH BACK PLATE. TWO BACK PLATES ARE INCLUDED IN EACH BOX OF 20 WHEELS.

expanded offering!

## 1/8" AVOS AND FLEX-STEEL/STAINLESS/ALUMINUM-BLENDING-TYPE 29

4-1/2 x 1/8 x 5/8-11	13,580	20			DC4518CAVOS36	66252825236		
					DC4518CHFLEX36	66252833455		
4-1/2 x 1/8 x 7/8	13,580	20			DC4518CAVOS36	66252823473		
					DC4518CAVOS46	66252823475		
					DC4518CAVOS60	66252823474		
					DC4518CHFLEX36	66252833454		
5 x 1/8 x 7/8	12,225	20			DC518CAVOS36	66252823478		
					DC518CHFLEX36	66252833456		
7 x 1/8 x 5/8-11	8,600	10			DC718HCHFLEX36	66252917052		
7 x 1/8 x 7/8	8,600	20			DC718CHFLEX36	66252917051		

**BEST RAPID STRIP**      **BEST RAPID FINISH** new!

SIZE: D X T X H      MAX RPM      STD PKG      PART NO.      UPC NO.      PART NO.      UPC NO.

## BEAR-TEX NON-WOVEN – CLEANING/POLISHING – TYPE 27

4-1/2 x 5/8-11	12,000	10	Ex Coarse S/C	66261009585	NEX-2AM	66261023947		
					NEX-2AF	66261023946		
					NEX-2SF	66261023943		
					A/O Med HS	66261023949		
4-1/2 x 7/8	12,000	10	Ex Coarse S/C	66261009649	NEX-2AM	66261020548		
					NEX-2AF	66261020547		
					NEX-2SF	66261020546		
					A/O Med HS	66261020549		
7 x 5/8-11	8,000	10	Ex Coarse S/C	66261009650				
7 x 7/8	8,000	10	Ex Coarse S/C	66261009586				

**STEEL/METAL**  
**ALUMINUM**  
**STAINLESS**



## Norton Depressed Center Adapter Kit

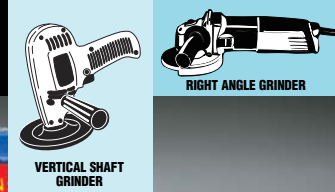
This reusable adapter kit contains everything you need to mount depressed center wheels and saucers with 7/8" center holes on to portable right angle or vertical shaft grinders. Adapter hubs are threaded for mounting on to standard 5/8"-11 NCRH spindles.

KIT NO.	WHEEL DIAMETER	WHEEL THICKNESS	UPC NO.
114	6" thru 9"	1/16" thru 1/4"	07660789275



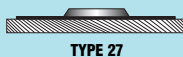
# FLAP DISCS

Our flap discs are engineered for light stock removal, blending and finishing all in one application. They grind like a depressed center wheel and finish like a fiber disc to reduce process time and lower total grinding costs.



## Typical Applications

- Stock removal
- Deburring
- Blending welds
- Edge chamfering
- Rust removal
- Cleaning and finishing



### BEST Norton SG Blaze R980 – Longest life, coolest cut rate

FEATURES	BENEFITS
• Next generation SG ceramic abrasive grain	• Last 50% – 200% longer than any flap discs on stainless steel, cobalt, chrome, Inconel, titanium and other hard-to-grind materials
• Improved Y-wt polyester cloth	• Significantly improves life, grain retention and fray resistance
• Supersized grinding aid	• Cool, noticeably fast cut rate
• Durable fiberglass back	• Quick stock removal and long life
• Type 29 conical shape	• Maximum contact with workpiece without loading
• Type 27 flat face	• Fine finishing primarily on flat surfaces



### BEST TwinFiber – Aggressive stock removal

FEATURES	BENEFITS
• Premium ceramic and zirconia alumina abrasive blend	• Excellent performance and efficiencies on stainless steel applications
• Durable, fiberglass back	• Less pressure for aggressive stock removal; long life
• Type 29 angled face, conical shape	• Maximum contact with work surface without loading
• 4-1/2" and 7" with 5/8"-11 hub	• Less downtime for disc changes
• 6" with 7/8" hole	• Support increasing volume of 6" tools



### BEST TwinStar – Fine finishes

FEATURES	BENEFITS
• Premium ceramic and zirconia alumina abrasive blend	• Excellent performance and efficiencies on stainless steel applications
• Type 27 – flat face; plastic back	• Plastic wears away with abrasive – for longer life • More forgiving than Type 29 – producing smooth finishes
• 4-1/2" and 7" with 5/8"-11 hub	• Less downtime for disc changes
• 4" with 5/8" hole	• Support increasing volume of smaller tools



### BETTER Charger R822 – Versatile; high performance

FEATURES	BENEFITS
• High performance zirconia alumina abrasive	• Aggressive cut and long life • Up to 30% longer life than aluminum oxide products
• Durable, fiberglass back	• Less pressure for aggressive stock removal and long life





**GOOD** Merit Zirconia – Ideal, general purpose flap disc

**FEATURES**

- Quality zirconia alumina grain with a phenolic resin back

**BENEFITS**

- Fast cutting; fine finishes
- Great value for MRO operations



## SPECcheck



### Flap Disc Starting Recommendations by Material

MATERIAL	HEAVY-DUTY / AGGRESSIVE STOCK REMOVAL	FINE FINISHING
Stainless steel and other tough applications	Type 29 SG Blaze R980, TwinFiber	Type 27 Norton SG Blaze R980 TwinStar
Other ferrous and nonferrous materials	Charger R822 Type 29	Charger R822 Type 27

### Flap Disc Competitive Cross Reference

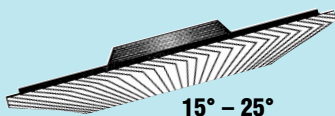
NORTON	DEWALT	GARRYSON	GEMTEX	KLINGSPOR	PFERD	SAIT	3M	WALTER	WEILER
SG Blaze R980							947D		
TwinStar								Enduroflex	
TwinFiber		Zirc +					747D Regalite		
Charger R822	Zirc	Zirc	Zirc	SMT626	Polifan	Saitlam F ZH	563D	Quick Step	Tiger, Big Cat
Merit		Zirc							Vortec

## Two Basic Flap Disc Designs

### Norton Type 29 Conical / Merit Type 27C Conical

#### THE MOST AGGRESSIVE CHOICE

- Conical flap discs have flaps angled at 10 degrees and may be used on both conical and flat surfaces
- The angle provides greater surface contact and as a result, tends to be the most aggressive choice
- The best choice when speed and stock removal are primary considerations

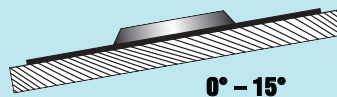


GRIND AT  
STEEPER ANGLES

### Norton and Merit Type 27 Flat

#### THE CHOICE FOR THE BEST FINISH

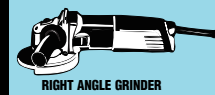
- The Type 27 flap discs have a flat design and are used primarily on flat surfaces
- The best choice for smooth finishing
- Also available in Norton Jumbo / Merit High Density sizes with extra large flaps lasting up to 40% longer than standard flap discs
- Choice will also depend on user preference of grinding angle (severe angle will weaken the edges)



GRIND AT  
FLATTER ANGLES



# FLAP DISCS



RIGHT ANGLE GRINDER



VERTICAL SHAFT GRINDER

FLAP DISCS



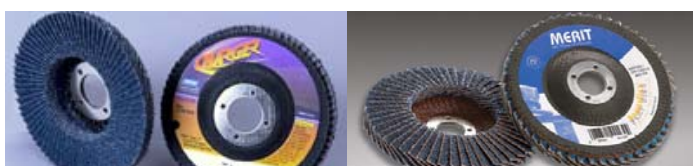
**BEST** T29 – SG BLAZE R980      **BEST** T29 – TWINFIBER      **BETTER** T29 – CHARGER R822      **GOOD** T27C – MERIT ZA

SIZE D X H	GRIT	MAX. RPM	STD.		STD.		STD.		STD.	
			PKG.	UPC NO.	PKG.	UPC NO.	PKG.	UPC NO.	PKG.	UPC NO.

## TYPE 29 / TYPE 27C CONICAL



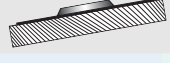
4 x 5/8	36	13,000				5	66261119265			
	40						66261119264			
	60						66261119263			
	80						66261119262			
	120						66261119261			
4-1/2 x 5/8-11	24	13,000	10			5		5	66261121291	10
	36		66261183490		63642536156		66261121290		08834194803	
	40		66261183491		63642536157		66261121289		08834194804	
	60		66261183492		63642536158		66261121288		08834194805	
	80		66261183493		63642597115		66261121287			
4-1/2 x 7/8	24	13,000	10			10		5	66261119271	10
	36		66261183486		63642504329		66261119270		08834194296	
	40		66261183487		63642504330		66261119269		08834194766	
	60		66261183488		63642504331		66261119268		08834194767	
	80		66261183489		63642504332		66261119267		08834194768	
5 x 7/8	24	12,000	10			5		5	66261119277	10
	36		66261190001				66261119276		08834193649	
	40		66261190002				66261119275		08834193650	
	60		66261190003				66261119274		08834193651	
	80		66261190004				66261119273		08834193652	
6 x 7/8	40	10,200			10					
	60			63642541406						
	80			63642541407						
7 x 5/8-11	24	8,500	10			5		5	66261119289	10
	36		66261183498		63642536159		66261119288			
	40		66261183499		63642536160		66261119287		08834197210	
	60		66261183500		63642536161		66261119286		08834197212	
	80		66261183501				66261119285		08834197213	
7 x 7/8	24	8,500	10			10		5	66261119283	10
	36		66261183494		63642504334		66261119282		08834197195	
	40		66261183495		63642504335		66261119281		08834194777	
	60		66261183496		63642504336		66261119280		08834197199	
	80		66261183497		63642504337		66261119279		08834197204	



**BETTER** T27 – JUMBO CHARGER R822      **GOOD** T27 – HIGH DENSITY MERIT ZA

SIZE D X H	GRIT	MAX. RPM	STD.		STD.	
			PKG.	UPC NO.	PKG.	UPC NO.

## TYPE 27 JUMBO / HIGH DENSITY



4-1/2 x 5/8-11	40	13,000	5	63642503527		
	60		63642503528			
	80		63642503529			
4-1/2 x 7/8	40	13,000	5	63642503531	10	08834190172
	60		63642503532		08834190767	
	80		63642503533		08834194360	
7 x 5/8-11	40	8,500	5	63642503539		
	60		63642503540			
7 x 7/8	40	8,500	5	63642503535	10	08834190933
	60		63642503536		08834194514	
	80		63642503537		08834194362	

## TECHtip

Use flap discs one grit size coarser than fiber discs, except in 36 grit.



It is the user's responsibility to refer to and comply with ANSI B7.7

# FLAP DISCS



**BEST** T27 – SG BLAZE R980      **BEST** T27 – TWINSTAR      **BETTER** T27 – CHARGER R822      **GOOD** T27 – MERIT ZA

SIZE D X H	GRIT	MAX. RPM	BEST T27 – SG BLAZE R980		BEST T27 – TWINSTAR		BETTER T27 – CHARGER R822		GOOD T27 – MERIT ZA	
			STD. PKG.	UPC NO.	STD. PKG.	UPC NO.	STD. PKG.	UPC NO.	STD. PKG.	UPC NO.
<b>TYPE 27 FLAT</b>										
2" Type II Turn-on	36	24,000							10	08834195020
	40									08834195021
	60									08834195022
	80									08834195023
	120									08834195024
3" Type II Turn-on	36	20,000							10	08834195035
	40									08834195036
	60									08834195037
	80									08834195038
	120									08834195039
4 x 5/8	40	13,000			10	63642536153				
	60					63642536154				
	80					63642536155				
4-1/2 x 5/8-11	36	13,000	10	66261100005	5	63642536147	5	63642503510		
	40		66261100006		63642536148		63642503511			
	60		66261100007		63642536149		63642503512			
	80		66261100008				63642503513			
4-1/2 x 7/8	36	13,000	10	66261100001	10	63642504876	5			
	40		66261100002		63642504877		66261134069			
	60		66261100003		63642504878		66261134070			
	80		66261100004		63642504879		66261134071			
	120									
5 x 7/8	36	12,000	10	66261100009	10	63642505281	5			
	40		66261100010		63642505282		63642503515			
	60		66261100011		63642505283		63642503516			
	80		66261100012							
	120									
7 x 5/8-11	36	8,500	10	66261100017	5	63642536150	5	63642503518		
	40		66261100018		63642536151		63642503519			
	60		66261100019		63642536152		63642503520			
	80		66261100020				63642503521			
7 x 7/8	36	8,500	10	66261100013	10	63642504880				
	40		66261100014		63642504881					
	60		66261100015		63642504882					
	80		66261100016							

FLAP DISCS

49



## Mini Powerflex Holder

DESCRIPTION	STD. PKG.	UPC NO.
Mini PowerFlex Type II Holder (Norton Speed-Lok TS)	1	08834168539
Mini Powerflex Type III Holder (Norton Speed-Lok TR)	1	08834160172

FIT 2" AND 3" MERIT FLAP DISCS



## TECHtips

- Operate Type 29/27C flap discs at a 15° – 25° angle; operate Type 27 (Regular and Jumbo / High Density) flap discs at an angle less than 15°; more severe angles will weaken flap edges.
- Use one grit size coarser than fiber discs, except in 36 grit.



It is the user's responsibility to refer to and comply with ANSI B7.7



# WIRE BRUSHES

WIRE BRUSHES

Our broad Merit wire brush offering includes all the basic shapes and configurations: cups, saucer cups, wheels, end brushes and hand brushes – in standard and full cable twist knot, crimped and stringer bead designs. New, attractive packaging clearly explains dimensions, structure, safety and machine usage.



## Typical Applications

- Cleaning rust, scale and dirt
- Light deburring
- Edge blending
- Roughening for adhesion
- Finishing for appearance
- Finish preparation prior to plating or painting

12

### BETTER Knotted Wire Cup Brushes

#### FEATURES

- Rigid structure
- Available with or without plastic guard
- Protective guard opens up into a shield

#### BENEFITS

- High impact cutting and cleaning on more demanding applications
- Application-specific
- Prevents wire, dust and any kind of projection from reaching the end-user during work
- Provides for a friendly handling of the brush, preventing potential pricking caused by the wire ends, for safety BEFORE, DURING and AFTER work

#### KNOTTED CUP – SINGLE ROW

- Single row, twist knot construction

- Limits flaring of the brush on corners and angles

#### KNOTTED CUP – DOUBLE ROW

- Double row, twist knot construction

- More aggressive; provides twice the cutting points of a single row cup brush for heavy-duty action in very severe applications



With Protective Guard

### BETTER High Performance (HP) Cable Crimped Cup Brushes with Protective Guards

#### FEATURES

- 12 wires of .009" brass-coated steel (12 x .009) are bundled together into a group, then crimped
- Cable crimped wire breaks down in smaller pieces than standard crimped brushes

#### BENEFITS

- Provides for a 50% longer lasting brush compared to standard crimped brushes
- Better flexibility on irregular surfaces
- For light- to medium-duty brushing applications on flat or irregular surfaces, and bevel buffing
- Safer wire to use



### BETTER Crimped Wire Cup Brushes

#### FEATURES

- Highly flexible
- Heavy wire fill

#### BENEFITS

- Fast cutting
- For light- to medium-duty brushing applications on flat or irregular surfaces, and bevel buffing



### BETTER Wire Saucer Cup Brushes

#### FEATURES

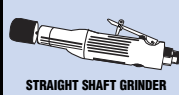
- Twist knot style
- Saucer-shaped
- Crimped style

#### BENEFITS

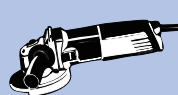
- For heavy-duty cleaning
- Ideal for cleaning corners, recesses, and other hard-to-reach areas
- For light- to medium-duty cleaning



# WIRE BRUSHES



STRAIGHT SHAFT GRINDER



RIGHT ANGLE GRINDER/GRINDING



HAND SANDING



BENCH GRINDER



WALK-BEHIND SAW



PEDESTAL GRINDER

## BETTER Crimped Wire Wheel Brushes

### FEATURES

- Dense, high-quality, tempered crimped wire construction
- Brushes may be used individually or stacked on a shaft

### BENEFITS

- Offers excellent performance for deburring, removing rust, corrosion and dirt, or for surface preparation
- Single-section, narrow-faced brushes are ideal for general purpose brushing of uneven or difficult-to-reach surfaces
- Single section, medium-faced brushes clean larger surface areas and have longer life



## BETTER Standard Twist Knot Wire Wheel Brushes

### FEATURES

- Knotted wire design
- Application-specific sizes

### BENEFITS

- Provides added rigidity for extra cutting power
- Ideal for welding and metal fabrication applications (removing weld scale spatter, extra-heavy rust and corrosion, or surface roughening)
- Small diameter wheels are used for small- to medium-duty jobs requiring flexibility and lighter brushing action
- Use 3" wheels on die grinders
- Use 4" on right angle grinders
- Use 6" wheels on bench grinders



## BETTER Full Cable Twist Knot Wire Wheel Brushes

### FEATURES

- Full cable twist brushes

### BENEFITS

- Provide very low flex and high impact cutting and cleaning
- For the tougher applications, especially for weld passes or other demanding applications



## BETTER Stringer Bead Knot Wire Wheel Brushes

### FEATURES

- Narrow face stringer bead wire
- Joint/Crack cleaning wire wheel brushes

### BENEFITS

- Delivers high-impact cutting and cleaning for toughest applications
- Specially suited for groove and weld bead, corners and t-connections
- Used for brushing joints, cleaning cracks in concrete and asphalt, and preparing expansion joints for filling and scaling



## BETTER End Brushes

### FEATURES

- Available in two configurations
- Knot wire end brushes
- Crimped wire end brushes

### BENEFITS

- For use on die grinders to clean and debur a recessed area or the inside diameter of a tube or pipe
- For more aggressive cutting
- For lighter brushing action and contoured surfaces



Knotted

Crimped

## BETTER Hand Brushes

### FEATURES

- Plastic handle scratch brush
- Long handle and shoe handle brushes

### BENEFITS

- Ergonomic handle
- Crimped wire for longer life; all other scratch brushes are straight wire, not crimped
- Wires are wrapped up and around the metal post so they never come out
- Curved face for hard to reach places
- Narrow brush allows access into tight areas and slots
- Steel scratch brushes are made with a high carbon brass coated steel; stainless steel is made with a 304L stainless



BRUSH DIA. X WIRE SIZE X ARBOR HOLE	MAX. RPM	BRUSHES/ BOX	WIRE TYPE	BETTER	
				PART NO.	
<b>KNOTTED WIRE CUP BRUSHES – FOR STAINLESS STEEL</b> 					
<b>KNOTTED CUP – SINGLE ROW</b>					
2-3/4 x .020 x 5/8-11	15,000	5	Stainless	69936653340	
4 x .020 x 5/8-11	9,000	5	Stainless	66252833947	
<b>KNOTTED WIRE CUP BRUSHES – FOR STEEL</b> 					
<b>KNOTTED CUP WITH PROTECTIVE GUARD – SINGLE ROW</b>					
2-3/4 x .020 x 5/8-11	15,000	5	Carbon	66252833492	
4 x .020 x 5/8-11	9,000	5	Carbon	66252833496	
5 x .020 x 5/8-11	6,500	5	Carbon	66252833497	
<b>KNOTTED CUP – SINGLE ROW</b>					
2-3/4 x .020 x 5/8-11	15,000	5	Carbon	69936653336	
2-3/4 x .020 x M10-1.25 / 1.50	15,000	5	Carbon	69936653338	
4 x .020 x 5/8-11	9,000	5	Carbon	69936653345	
6 x .020 x 5/8-11	6,000	5	Carbon	69936605965	
6 x .035 x 5/8-11	6,000	5	Carbon	69936602003	
<b>KNOTTED CUP – DOUBLE ROW</b>					
6 x .020 x 5/8-11	6,000	1*	Carbon	69936653346	
<b>HIGH PERFORMANCE CABLE CRIMPED CUP BRUSHES – FOR STEEL</b> 					
<b>CRIMPED CUP WITH PROTECTIVE GUARD – SINGLE ROW</b>					
3 x 12 x .009 x 5/8-11	15,000	5	Carbon	66252833493	
4 x 12 x .009 x 5/8-11	9,000	5	Carbon	66252833494	
5 x 12 x .009 x 5/8-11	6,500	5	Carbon	66252833495	
<b>CRIMPED WIRE CUP BRUSHES – FOR STEEL</b> 					
3 x .014 x 5/8-11	15,000	5	Carbon	69936653341	
4 x .014 x 5/8-11	9,000	5	Carbon	69936653347	
6 x .014 x 5/8-11	6,000	5	Carbon	69936653348	
6 x .020 x 5/8-11	6,000	1*	Carbon	69936653349	
<b>WIRE SAUCER CUP BRUSHES – FOR STAINLESS</b> 					
<b>TWIST KNOT SAUCER CUP</b>					
5 x .020 x 5/8-11	12,500	5	Stainless	66252835586	
<b>WIRE SAUCER CUP BRUSHES – FOR STEEL</b> 					
<b>TWIST KNOT SAUCER CUP</b>					
4 x .020 x 5/8-11	15,000	5	Carbon	66252833483	
5 x .020 x 5/8-11	12,500	5	Carbon	66252835585	
<b>CRIMPED SAUCER CUP</b>					
4 x .014 x 5/8-11	15,000	5	Carbon	66252833485	
<b>CRIMPED WIRE WHEEL BRUSHES – FOR STEEL</b>  					
<b>CRIMPED NARROW 1/2" FACE</b>					
6 x .014 x 1/2-2**	6,500	1	Carbon	69936653306	
<b>CRIMPED MEDIUM 3/4" FACE</b>					
6 x .014 x 1/2-2**	6,500	1	Carbon	69936653324	
8 x .014 x 1/2-2**	4,500	1	Carbon	69936653326	
<b>STD TWIST KNOT WIRE WHEEL BRUSHES – FOR STEEL</b>   					
3 x .015 x 3/8-1/2	20,000	5	Carbon	69936653314	
4 x .020 x 5/8-11	20,000	5	Carbon	69936606275	
6 x .020 x 1/2-2**	12,500	5	Carbon	69936653327	










When using wire brushes, be sure to comply with ANSI B165 "Power-Driven Brushing Tools: Safety Requirement for the Design, Care and Use." and Safety section on nortonabrasives.com website.

ALL BRUSHES ARE INDIVIDUALLY CLAMSHELL PACKAGED UNLESS OTHERWISE NOTED.

\* BULK PACKED ITEMS

\*\* 7 BUSHING SIZES INCLUDED WITH EACH BRUSH.

# WIRE BRUSHES

BRUSH DIA. X WIRE SIZE X ARBOR HOLE	MAX. RPM	BRUSHES/ BOX	WIRE TYPE	BETTER
				PART NO.
<b>FULL CABLE TWIST KNOT WIRE WHEEL BRUSHES – FOR STAINLESS</b> 				
4 x .020 x 5/8-11	20,000	5	Stainless	69936653333
4 x .020 x M10 x 1.25 / 1.50	20,000	5	Stainless	69936653334
5 x .020 x 5/8-11	12,500	5	Stainless	66252833488
<b>FULL CABLE TWIST KNOT WIRE WHEEL BRUSHES – FOR STEEL</b> 				
4 x .020 x 5/8-11	20,000	6*	Carbon	69936653331
5 x .020 x 5/8-11	12,500	5	Carbon	66252833487
6 x .020 x 5/8-11	12,500	5	Carbon	69936653352
<b>STRINGER BEAD KNOT WIRE BRUSHES – FOR STAINLESS STEEL</b> 				
<b>FOR RIGHT ANGLE GRINDERS</b>				
4 x .020 x 5/8-11	20,000	5	Stainless	69936606278
5 x .020 x 5/8-11	12,500	6*	Stainless	66252833491
6 x .020 x 5/8-11	9,000	5	Stainless	69936653351
<b>STRINGER BEAD KNOT WIRE BRUSHES – FOR STEEL</b>  				
<b>FOR RIGHT ANGLE GRINDERS</b>				
4 x .020 x 5/8-11	20,000	5	Carbon	69936606277
4 x .020 x 5/8-11	20,000	6*	Carbon	66252833489
5 x .020 x 5/8-11	12,500	6*	Carbon	66252833490
6 x .020 x 5/8-11	12,500	10*	Carbon	69936653350
6-7/8 x .020 x 5/8-11	9,000	10*	Carbon	69936653329
<b>FOR WALK-BEHIND MACHINES – JOINT/CRACK CLEANING BRUSHES</b>				
12 x .035 x 1 - DP	4,500	2*	Carbon	69936606280
<b>END BRUSHES – FOR STAINLESS STEEL</b> 				
<b>STEM MOUNTED CRIMPED</b>				
3/4 x .006 x 1/4 Shank	20,000	10*	Stainless	66936606145
<b>END BRUSHES – FOR STEEL</b> 				
<b>STEM MOUNTED KNOTTED</b>				
3/4 x .020 x 1/4 Shank	20,000	10*	Carbon	69936653316
1 x .014 x 1/4 Shank	20,000	10*	Carbon	69936606279
1 x .020 x 1/4 Shank	20,000	10*	Carbon	69936653310
<b>STEM MOUNTED CRIMPED</b>				
3/4 x .014 x 1/4 Shank	20,000	10*	Carbon	69936653317
1 x .020 x 1/4 Shank	20,000	10*	Carbon	69936653309
<b>COPPER CENTER</b>				
2-1/2 x .014 x 1/2-3/8	20,000	12*	Carbon	69936653320
<b>HAND BRUSHES – FOR STAINLESS STEEL</b> 				
Scratch Brush 3 x 19 Long Handle		12	Stainless	66252833950
Scratch Brush 4 x 16 Shoe Handle		30	Stainless	66252833951
Scratch Brush Plastic Handle		24	Stainless	66252833953
Inspection Brush 3 x 7		36	Stainless	66252833952
<b>HAND BRUSHES – FOR STEEL</b> 				
Scratch Brush 3 x 19 Long Handle		12	Carbon	66252833948
Scratch Brush 4 x 16 Shoe Handle		30	Carbon	66252833949
Scratch Brush Plastic Handle		24	Carbon	66252833954