

SPECIALTY CASTERS & PRODUCTS

<u>Item</u>	<u>Page</u>
Dolly Casters	2
Stage/Scene Shifting Casters	3
Gate Casters	4
Leveling Casters.....	5-10
New Concepts Leveling Casters	11-12
V-Groove Casters	13-14
Kingpinless Pneumatic Casters	15-16
Turntables	17
Floor Locks	18-19
Leveling Jacks	20
Bumpers.....	21-22
Couplers.....	23

Acorn™ can supply any size and type caster rig with any type wheel with proper size precision ball bearings. Call, fax or e-mail for application assistance, or visit our website to view our complete catalog in PDF format.

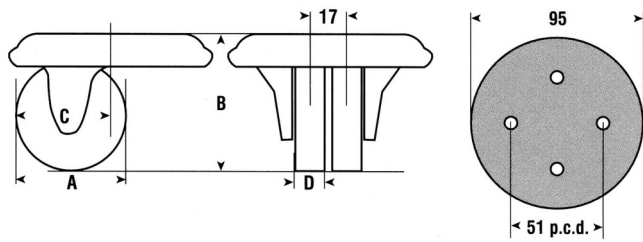
DOLLY CASTERS

LOW HEIGHT TWIN WHEEL DOLLY CASTERS

Designed for special applications where heavy equipment is moved over level surfaces.

Low Height dual wheel casters (type LL) have high load capacity in relation to its overall height. This is due to the center line of the wheels being within the circumference of the large diameter swivel bearing and the benefits of the differential action of dual wheels.

Best suited for use on hard/smooth floors.



LOW HEIGHT TWIN WHEEL DOLLY CASTERS

Dia. (A)	OAH (B)	Swl. Rad. (C)	Tread (D)	Wheel Type (Wheel Code)	Cap. (lb)	Part Number (Plain Bore)
50 mm	64	50	14	Nylacron™ (NY)	350	LHTWNY/050/14/PB
50 mm	64	50	14	Vulkollan® (VY)	350	LHTWVY/050/14/PB
50 mm	64	50	14	Steel (ST)	600	LHTWST/050/14/PB

*All wheels are available with Precision Bearings for easier rolling under load. To specify, replace "Plain Bore" in part number with "26PB" (ex: LHTW-NY/050/14-26PB)



LOW HEIGHT KINGPINLESS DOLLY CASTERS

Designed for special applications where heavy equipment is moved over level surfaces. These casters have high load capacity in relation to its overall height. This is due to the kingpinless construction with a large diameter caster ball race and the wide wheel.

LOW HEIGHT KINGPINLESS DOLLY CASTERS

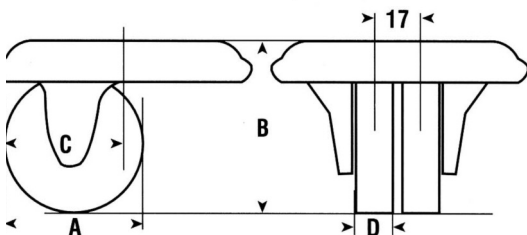
Dia. (A)	OAH (B)	Swl. Rad. (C)	Tread (D)	Wheel Type (Wheel Code)	Cap. (lb)	Part Number (Plain Bore)
85 mm	144	100	75	Urethane/CI Core (UY)	1100	05/72VUY/085/75/PB
85 mm	144	100	75	Vulkollan® (VY)	1100	05/72VVY/085/75/PB
85 mm	144	100	75	Nylacron™ (NY)	1300	05/72VNY/085/75/PB

*All wheels are available with Precision Bearings for easier rolling under load. To specify, replace "Plain Bore" in part number with "26PB" (ex: LHTW-NY/050/14-26PB)

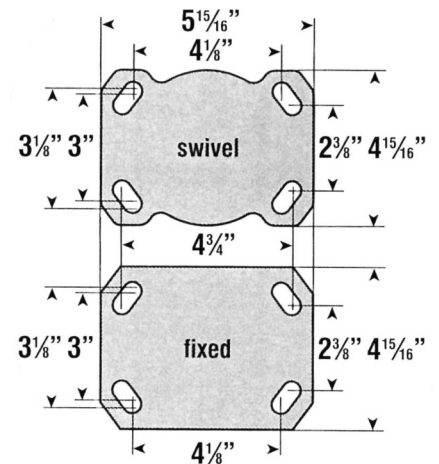
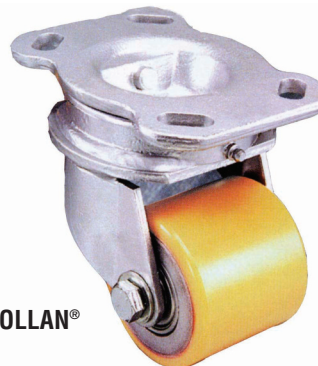
OPTIONAL:

Four Position Swivel Lock - SL4 converts the swivel caster to a fixed position for straight line travel. Add SL4 to caster number.

Optional Top Plates Available



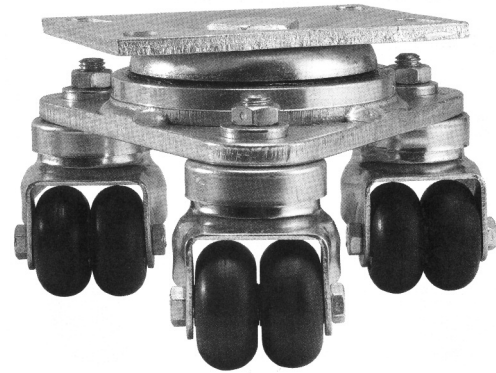
VULKOLLAN®



STAGE/SCENE SHIFTING CASTERS

STAGE/SCENE SHIFTING CASTERS

Primarily used in the theatrical and movie making industries for moving scenery, props and stage equipment. StageMaster incorporates three swiveling casters attached to a heavy-duty swiveling platform base that easily mounts to the item to be moved. The swiveling action of the casters combined with the swiveling action of the platform base allows the operator to easily maneuver heavy, awkward devices in tight quarters with relative ease.



Scene Shifting Dollies
Kingpinless Swivel Section & Nylacron™ Wheels
with Precision Bearings Recommended

DESIGN CHARACTERISTICS

Single or Dual Wheel Caster Design: Dual wheel caster version with 2" or 2-1/2" diameter wheels. Single caster version with 2-1/2" or 3" diameter wheels.

Four-Sided Double Ball Raceway: Hardened steel ball bearings in the load bearing and secondary thrust bearing through the swivel raceway "on all four sides." This protects the central kingpin from shock loading for free swiveling under heavy loads.

Heat Treated Moving Parts: All moving parts are heat treated to a precise molecular depth and Rockwell hardness. This extends StageMaster life under rugged conditions and shock loads.

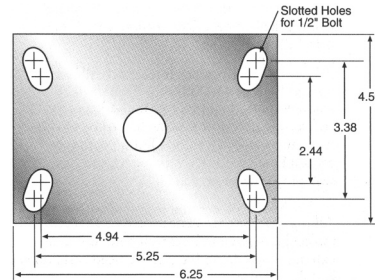
Raceway Dust Caps on Casters / Underbody Seal on Platform Base: Dust caps and underbody seals protect raceways from contamination by dust, dirt, moisture and other debris.

Thread Guards: Single-Wheel version only. Keeps unwanted materials out of wheel bearings thus increasing the life of the StageMaster assembly.

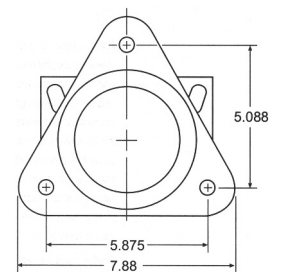
SWIVEL RIG OPTIONS

- Increased Capacities, Diameter and Sizes for any load capacity with Nylacron™ Wheels.
- Kingpinless swivel section and Kingpinless casters recommended for heavy duty applications.
- Black Oxide Finish. Other finishes available, consult Acorn™.
- Wheel Brakes (Consult Acorn™)
- Wheel Materials & Diameters.

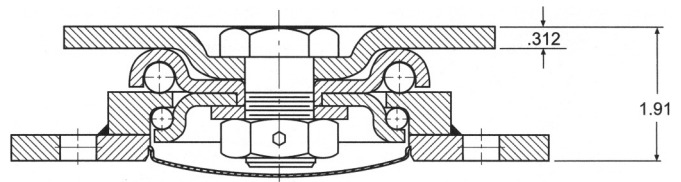
OPTIONAL TOP PLATE



BOLT HOLE CENTERS



SWIVEL SECTION



CASTER SPECIFICATIONS/NYLACRON™ WHEELS

Dia. (inch)	Width (inch)	Cap. (lb)	OAH (inch)	Wheels Per Caster	Wt. (lb)	Swivel Part Number Add B, P, PL, R or T*
2	7/8	1200	5	2	14	SMNYP*0278S
2-1/2	1-1/4	1200	5-1/2	1	13	SMNYP*2512S
3	2	1800	6-1/4	1	20	SMNYP*0320S

*Add "B" for Ball Bearing, "P" for Precision Bearing, "PL" for Plain Bearing, "R" for Roller Bearing or "D" for Delrin Bearing

CAD DRAWINGS FOR STAGE/SCENE SHIFTING CASTERS & DOLLIES AVAILABLE

CUSTOM DOLLIES AVAILABLE

SPRING LOADED GATE CASTERS

GATE & LADDER CASTERS

Load Capacity Up to 210 lbs.

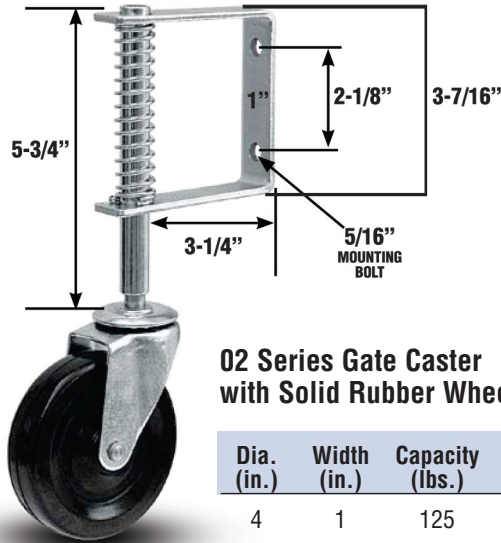


Custom Gate & Ladder Casters Available in Stainless Steel with Nylacron™ Wheels

These casters are designed to make gate opening and closing easy. The casters feature gate mounts and spring loaded shock absorption.

Features

- Gate mount integrated in caster
- Spring loaded design provides shock absorption



02 Series Gate Caster with Solid Rubber Wheel (41 Plain Bearing)

Dia. (in.)	Width (in.)	Capacity (lbs.)	OAH (in.)	Swivel Lead (in.)	Part Number
4	1	125	10-1/2	3.2	02RN04041S007



14 Series Gate Caster with Semi-Pneumatic Tire (27 Radial Ball Bearing)

Dia. (in.)	Width (in.)	Capacity (lbs.)	OAH (in.)	Swivel Lead (in.)	Part Number
8	2-1/2	210	18-1/2	6.5	14SN08427S001

LEVELING CASTERS



- Built-in stabilizer is adjustable.
- Rubber stabilizer “post” helps adsorb shaking and shock.
- Excellent low-profile caster for workstations that only occasionally move.
- Stabilizer acts as a miniature “lock” when fully engaged to prevent caster from moving.
- Strong nylon wheel is non-marking.
- Double race swivel design.
- Available in top plate and stemless fastenings.
- Corrosion resistant zinc plated finishing, sleek chrome plating or ivory powder coating for extra style.
- Extra load capacity with stabilizer engaged.
- Applications include:
 - Computer workstations
 - Work tables
 - Printer and electronic stands

Wheel Dia.	Hub Length	Wheel Type with Plain Bearing	Capacity (lb.) Rolling / Stabilized	OAH	Swivel Lead	Part Number	Type
1-3/4"	1-1/16"	NYL-Nylon	220 / 550	2-3/4"	2-13/32"	932000NYL	Stemless
1-3/4"	1-1/16"	NYL-Nylon	220 / 550	2-3/4"	2-13/32"	932001NYL	Square Plate
1-3/4"	1-1/16"	NYL-Nylon	220 / 550	2-3/4"	2-13/32"	932002NYL	Hexagon Plate
2-1/2"	1-3/8"	NYL-Nylon	320 / 1,000	4-1/32"	3-3/32"	933000NYL	Stemless
2-1/2"	1-3/8"	NYL-Nylon	320 / 1,000	4-1/32"	3-3/32"	933001NYL	Square Plate

Dia.	Type	Size	Code
1-3/4"	Stemless	M12 x 1.75P Tap Depth 9/32"	00
1-3/4"	Hexagon Plate	Overall: 2-3/4" x 2-3/4" Hole Spacing: Center dia. 65mm x 6 holes Attaching Bolt Size: M6 x 1.0P	02
1-3/4"	Square Plate	Overall: 2-7/8" x 2-7/8" Hole Spacing: 2-9/32" x 2-9/32" Attaching Bolt Size: M6 (1/4")	01
2-1/2"	Stemless	M12 x 1.75P Tap Depth 25/32"	00
1-3/4"	Square Plate	Overall: 3-35/64" x 3-35/64" Hole Spacing: 2-3/4" x 2-3/4" Attaching Bolt Size: M8 (5/16")	01

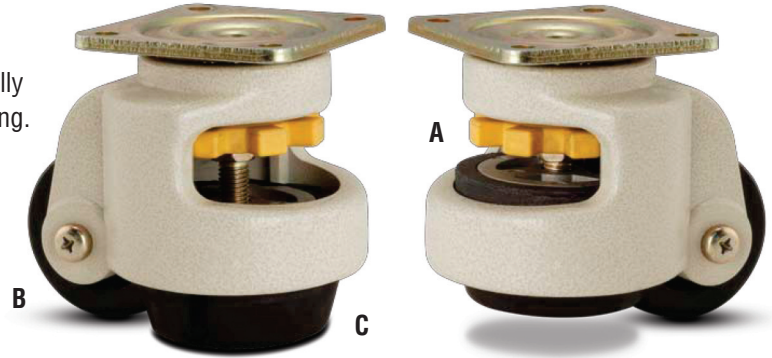
Code	Finish
IPC	Ivory Power Coating (Standard)
ZN	Zinc Plating
CR	Chrome Plating

LEVELING CASTERS

LEVELING CASTERS

Load Capacity Up to 2200 lbs.

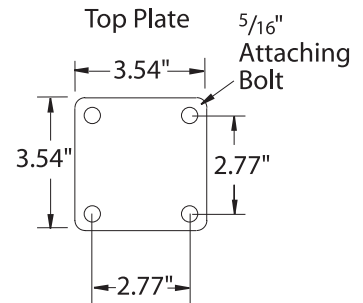
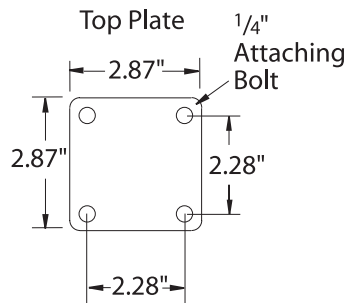
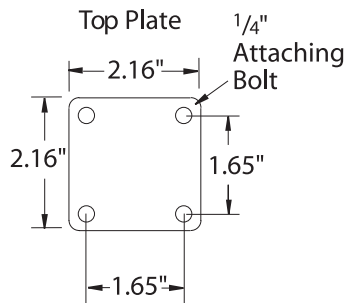
- Stabilizer acts as a miniature "total lock" when fully engaged to prevent caster/equipment from moving.
- Excellent low profile caster.
- Double race swivel design.
- Stylish ivory powder coating.
- NSF Listed for food service industry.



TYPICAL APPLICATIONS

- Computer Workstations.
- Printer and Other Electronic Equipment Stands.
- Work Tables.
- Food Service.
- Pharmaceutical.

- A.** Built-in leveler is easily adjustable.
- B.** Strong nylon wheel is non-marking.
- C.** Rubber stabilizer "post" helps absorb equipment shaking and shock (turn yellow dial until caster is lifted off the ground).



Dia. (inch)	Width (inch)	Hub (lbs.)	OAH (inch)	Max. OAH Using Leveler	Capacity (lb)	Swivel Lead (inch)	Weight (lb)	Part Number
1.68	.70	.80	2.80	3.27	110	3.40	.82	WSLCANNPL0104S
2.00	.88	.93	3.23	3.70	660	3.90	1.50	WSLCANNPL0204S
2.40	1.13	1.23	4.02	4.61	1320	5.30	3.00	WSLCANNPL02X4S
2.86	1.25	1.32	4.72	5.51	2200	5.60	3.70	WSLCANNPL0304S

NYLON WHEEL (NN) / RUBBER LEVELER PAD WITH PLAIN BEARING

LEVELING CASTERS STAINLESS STEEL

Stainless Steel Leveling Caster WMS-60S



FEATURES

- Smooth oscillating level operation.
- Premier type 304 stainless steel construction.
- Caster & leveler in one unit.

BENEFITS

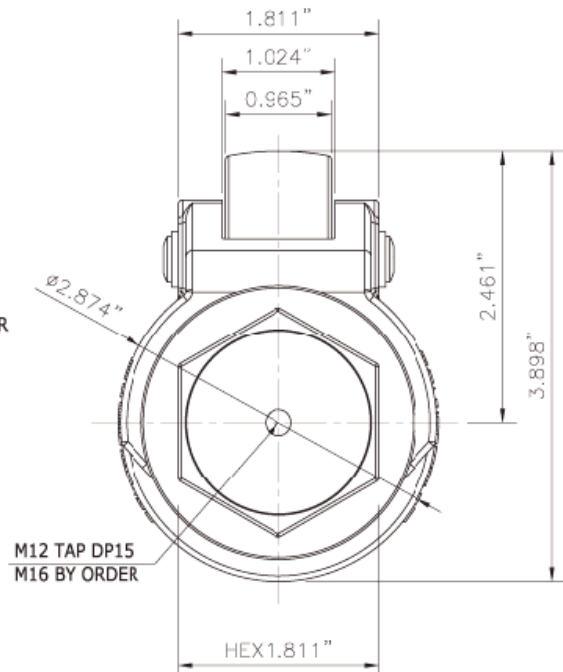
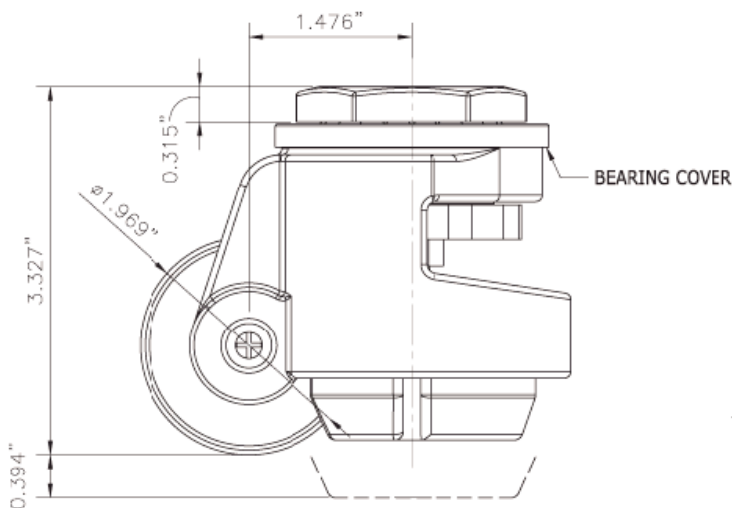
- Excellent corrosion resistance.
- Non-marking pad and wheel.
- Hygienic design bearing cover.

IDEAL APPLICATIONS

- Food Processing Equipment.
- Pharmaceutical & Medical Equipment.
- Packaging Equipment.

PARTS	MATERIALS	FINISH, TYPE, COLOR
Top Plate	Stainless Steel	SUS304
Ball	Stainless Steel	SUS304
Frame	Stainless Steel	SUS304
Handle	Nylon - 6	Orange
Leveler	Stainless Steel	Natural
Pin	Stainless Steel	Natural
Pad	NBR Rubber	Black
Wheel	Nylon - 6	Black

* Ratchet handle: **Stainless Steel SUS304**



LEVELING CASTERS STAINLESS STEEL

PLATE MOUNTS THUMBWHEEL ADJUSTMENT STYLE

Part Number	Maximum Load	Recommended Load	Wheel Diameter	Wheel Width	Min. Height	Max. Height	Plate Size
WMS40F	220	110	1-3/4"	11/16"	2-13/16"	3-3/16"	2.16 x 2.16
WMS60F	1100	550	2"	1"	3-5/16"	3-11/16"	2.87 x 2.87
WMS80F	1763	882	2-1/2"	1-1/8"	4-1/8"	4-11/16"	3.54 x 3.54

PLATE MOUNTS RATCHET ADJUSTMENT STYLE

Part Number	Maximum Load	Recommended Load	Wheel Diameter	Wheel Width	Min. Height	Max. Height	Plate Size
WMISR60F	1100	550	2"	1"	3-5/16"	3-11/16"	2.87 x 2.87
WMISR-80F	1763	882	2-1/2"	1-1/8"	4-1/8"	4-11/16"	3.54 x 3.54

STEM MOUNTS THUMBWHEEL ADJUSTMENT STYLE

Part Number	Maximum Load	Recommended Load	Wheel Diameter	Wheel Width	Min. Height	Max. Height	Mounts Size
WMS40S	220	110	1-3/4"	11/16"	2-13/16"	3-3/16"	M8-1.25 TAP
WMS60S	1100	550	2"	1"	3-5/16"	3-11/16"	M12-1.75 TAP
WMS80S	1763	882	2-1/2"	1-1/8"	4-1/8"	4-11/16"	M12-1.75 TAP
WMSPIN40S	220	110	1-3/4"	11/16"	2-13/16"	3-3/16"	3/8"-16
WMSPIN60S	1100	550	2"	1"	3-5/16"	3-11/16"	1/2"-13
WMSPIN80S	1763	882	2-1/2"	1-1/8"	4-1/8"	4-11/16"	1/2"-13

DIECASTED LEVELING CASTERS

Diecasted Leveling Caster WGD-80F



IDEAL APPLICATIONS

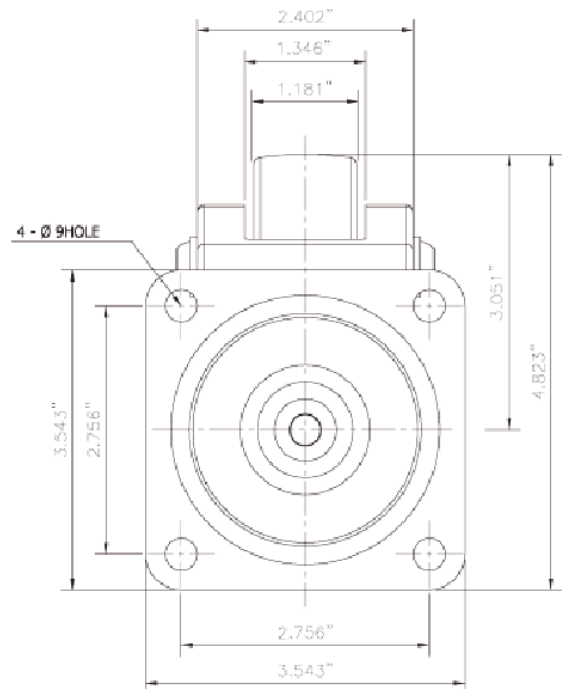
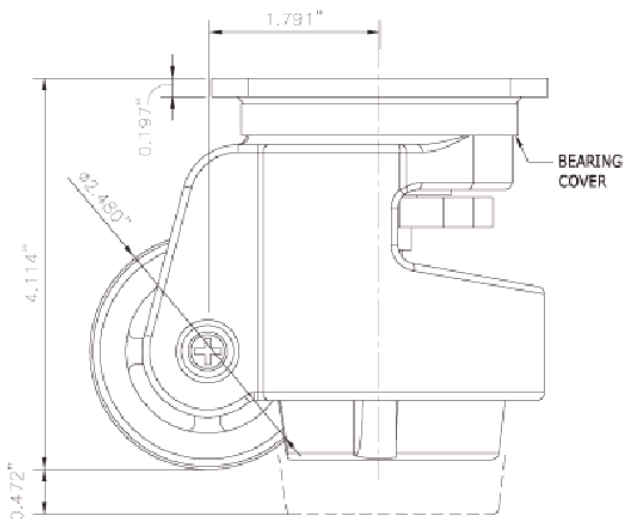
- Semi-conductor Equipment.
- Assembly Equipment.
- Packaging Equipment.
- Workstations.
- Conveyor Systems.
- General Purpose.
- Food Processing Equipment.
- Pharmaceutical & Medical Equipment.

PARTS	MATERIALS	FINISH, TYPE, COLOR
Top Plate	SM45C	Zinc Galvanized
Ball	STB2	NI-Cr
Frame	ADC8	Ivory, Black, Gray
Handle	Nylon - 6	Orange
Leveler	SM45C	Zinc Galvanized
Pin	SM45C	Zinc Galvanized
Pad	NBR Rubber	Black
Wheel	Nylon - 6	Black

*120, 150 series: Handle - stainless steel nut

*120, 150 series: Leveler - stainless steel

*120, 150 series: Pad - ADC8



DIECASTED LEVELING CASTERS

PLATE MOUNTS THUMBWHEEL ADJUSTMENT STYLE

Part Number	Maximum Load	Recommended Load	Finish Color	Wheel Diameter	Wheel Width	Min. Height	Max. Height	Plate Size
WGD40F	110	60	Ivory	1-3/4"	11/16"	2-13/16"	3-3/16"	2.16" x 2.16"
WMI40F	110	60	Gray/Black	1-3/4"	11/16"	2-13/16"	3-3/16"	2.16" x 2.16"
WGD60F	550	300	Ivory	2"	1"	3-5/16"	3-11/16"	2.87" x 2.87"
WMI60F	550	300	Gray/Black	2"	1"	3-5/16"	3-11/16"	2.87" x 2.87"
WGD80F	1100	600	Ivory	2-1/2"	1-3/16"	4-1/8"	4-11/16"	3.54" x 3.54"
WMI80F	1100	600	Gray/Black	2-1/2"	1-3/16"	4-1/8"	4-11/16"	3.54" x 3.54"
WGD100F	1653	825	Ivory	2-13/16"	1-3/16"	4-3/4"	5-3/16"	3.74" x 3.74"
WMI100F	1653	825	Gray/Black	2-13/16"	1-3/16"	4-3/4"	5-3/16"	3.74" x 3.74"
WGD120F	2220	1100	Ivory	2-13/16"	1-3/16"	4-3/4"	5-3/16"	3.74" x 3.74"
WMI120F	2220	1100	Gray/Black	2-13/16"	1-3/16"	4-3/4"	5-3/16"	3.74" x 3.74"
WGD150F	3300	1650	Ivory	3-13/16"	2-7/32"	3-3/16"	5-3/4"	3.94" x 3.94"
WMI150F	3300	1650	Gray/Black	3-13/16"	2-7/32"	3-3/16"	5-3/4"	3.94" x 3.94"

PLATE MOUNTS RATCHET ADJUSTMENT STYLE

Part Number	Maximum Load	Recommended Load	Finish Color	Wheel Diameter	Wheel Width	Min. Height	Max. Height	Plate Size
WMIR60F	550	300	Ivory	2"	1"	3-5/16"	3-11/16"	2.87" x 2.87"
WMIR60F	550	300	Gray/Black	2"	1"	3-5/16"	3-11/16"	2.87" x 2.87"
WMIR80F	1100	600	Ivory	2-1/2"	1-3/16"	4-1/8"	4-11/16"	3.54" x 3.54"
WMIR80F	1100	600	Gray/Black	2-1/2"	1-3/16"	4-1/8"	4-11/16"	3.54" x 3.54"

STEM MOUNTS THUMBWHEEL ADJUSTMENT STYLE

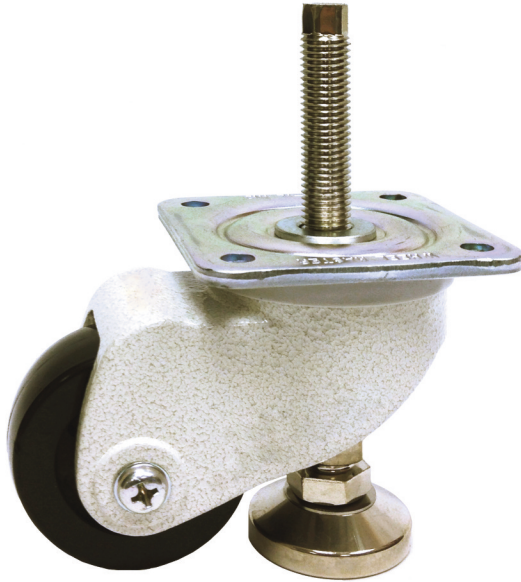
Part Number	Maximum Load	Recommended Load	Finish Color	Wheel Diameter	Wheel Width	Min. Height	Max. Height	Plate Size
WGD40S	110	60	Ivory	1-3/4"	11/16"	2-13/16"	3-3/16"	M8-1.25 TAP
WMI40S	110	60	Gray/Black	1-3/4"	11/16"	2-13/16"	3-3/16"	M8-1.25 TAP
WMPIN40S	110	60	Ivory	1-3/4"	11/16"	2-13/16"	3-3/16"	3/8-16"
WMPIN40S	110	60	Gray/Black	1-3/4"	11/16"	2-13/16"	3-3/16"	3/8-16"
WGD60S	550	300	Ivory	2"	1"	3-5/16"	3-11/16"	M12-1.75 TAP
WMI60S	550	300	Gray/Black	2"	1"	3-5/16"	3-11/16"	M12-1.75 TAP
WMPIN60S	550	300	Ivory	2"	1"	3-5/16"	3-11/16"	1/2-13"
WMPIN60S	550	300	Gray/Black	2"	1"	3-5/16"	3-11/16"	1/2-13"
WGD80S	1100	600	Ivory	2-1/2"	1-3/16"	4-1/8"	4-11/16"	M12-1.75 TAP
WMI80S	1100	600	Gray/Black	2-1/2"	1-3/16"	4-1/8"	4-11/16"	M12-1.75 TAP
WMPIN80S	1100	600	Ivory	2-1/2"	1-3/16"	4-1/8"	4-11/16"	1/2-13"
WMPIN80S	1100	600	Gray/Black	2-1/2"	1-3/16"	4-1/8"	4-11/16"	1/2-13"
WGD100S	1653	825	Ivory	2-13/16"	1-3/16"	4-3/4"	5-3/16"	M16-2.0 TAP
WMI100S	1653	825	Gray/Black	2-13/16"	1-3/16"	4-3/4"	5-3/16"	M16-2.0 TAP
WMPIN100S	1653	825	Ivory	2-13/16"	1-3/16"	4-3/4"	5-3/16"	5/8-11"
WMPIN100S	1653	825	Gray/Black	2-13/16"	1-3/16"	4-3/4"	5-3/16"	5/8-11"
WGD120S	2200	1100	Ivory	2-13/16"	1-3/16"	4-3/4"	5-3/16"	M16-2.0 TAP
WMI120S	2200	1100	Gray/Black	2-13/16"	1-3/16"	4-3/4"	5-3/16"	M16-2.0 TAP
WMPIN120S	2200	1100	Ivory	2-13/16"	1-3/16"	4-3/4"	5-3/16"	5/8-11"
WMPIN120S	2200	1100	Gray/Black	2-13/16"	1-3/16"	4-3/4"	5-3/16"	5/8-11"

**Model part number corresponds to finish color: GRY - Gray, BLK - Black (i.e. WMI-60S-GRY)

** Model No.: GRY: Gray BLK: Black

NEW CONCEPTS LEVELING CASTERS

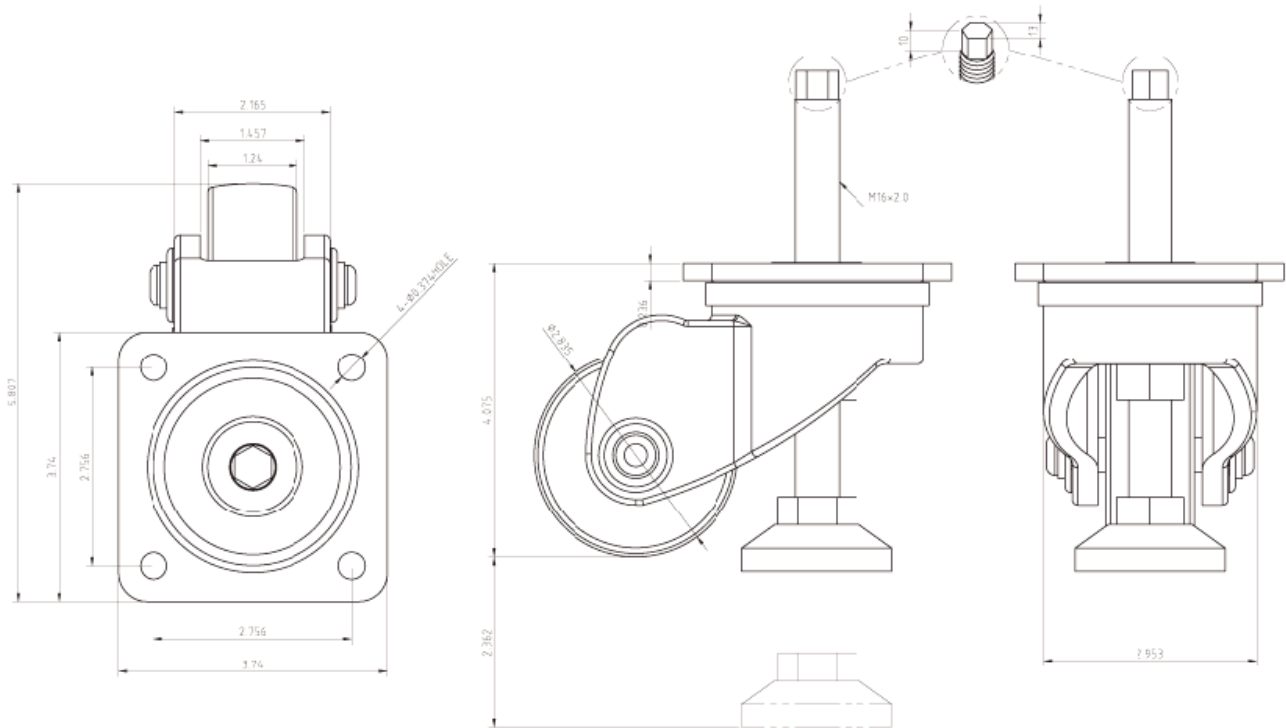
New Concepts Leveling Caster WMLC-700FS



IDEAL APPLICATIONS

- Semi-conductor Equipment.
- Assembly Equipment.
- Packaging Equipment.
- Workstations.
- Conveyor Systems.
- General Purposes.
- Food Processing Equipment.
- Pharmaceutical & Medical Equipment.

PARTS	MATERIALS	FINISH, TYPE, COLOR
Top Plate	SM45C	Zinc Galvanized
Ball	STB2	NI-Cr
Frame	ADC8	Powder Coated: Ivory
Leveler	SM45C	Zinc Galvanized
Pad	SM45C/SPC NBR	NCR Rubber
Pin	SM45C	Zinc Galvanized
Wheel	Nylon - 6	Black



NEW CONCEPTS LEVELING CASTERS

PLATE MOUNTS LEVELING CASTER STYLES

Part Number	Maximum Load	Recommended Load	Wheel Diameter	Wheel Width	Min. Height	Max. Height	Plate Size
WMLC1000FS	2200	1100	3"	2-7/32"	4-13/32"	6-3/4"	3.74" x 3.74"
WMLC1000FSB	2200	1100	3"	2-7/32"	4-13/32"	6-3/4"	3.74" x 3.74"
WMLCD1000FS	2200	1100	2-27/32"	2-7/32"	4-5/16"	6-11/16"	3.74" x 3.74"
WMLC700FS	1540	770	2-27/32"	1-7/16"	4-5/16"	6-11/16"	3.74" x 3.74"
WMLC200FS	440	220	2"	1"	2-27/32"	6-11/16"	2.87" x 2.87"
WMP200FS	440	220	2"	1"	2-27/32"	2-9/12"	2.87" x 2.87"

STEM MOUNTS LEVELING CASTER STYLES

Part Number	Maximum Load	Recommended Load	Wheel Diameter	Wheel Width	Min. Height	Max. Height	Plate Size
WMP200SS	440	220	2"	1"	2-27/32"	2-9/12"	M12 x 1.5 TAP



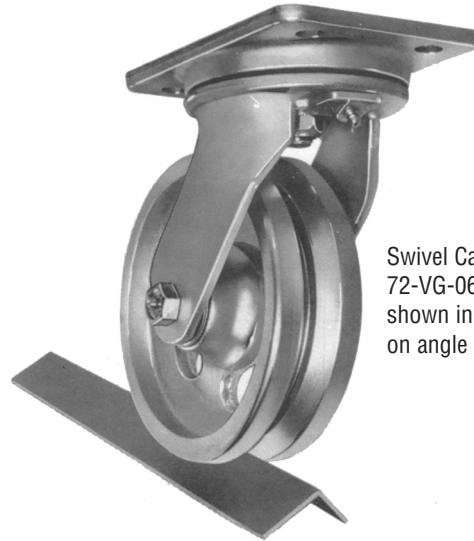
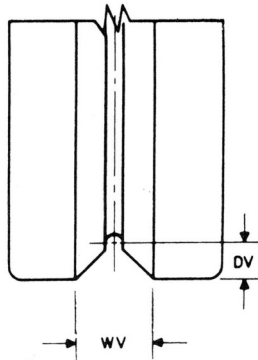
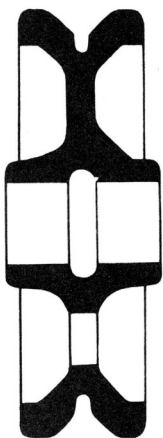
V-GROOVE CASTERS

Designed for use on inverted angle track for any service requiring guidance of the truck or conveyor unit. Suggested uses include movement of production jigs or fixtures in straight line assembly, travel in and out of “blind alley” retorts or ovens, and in assembly or processing operations where rivets, bolts or other wheel stopping hazards might impede normal movement.

V-GROOVE CASTER FEATURES

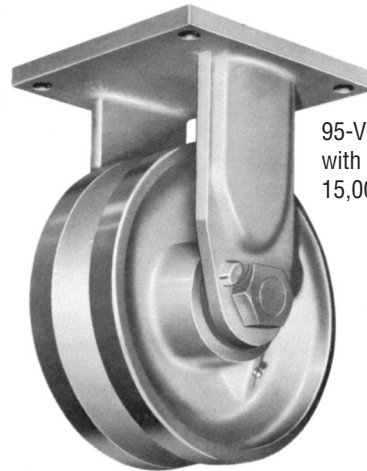
- Complete flexibility either on the floor or track.
- Wheel face and “V” groove fully machined.
- Wheel Bearings - straight roller, with hardened and precision ground spanner bushing inner race for medium to heavy duty service. Tapered roller bearings for heavier duty or more rugged applications.
- Lubrication - full pressure type to all bearings.
- Finish - Rigs thru Series 90 are plated Series 94 and 95 rigs and all wheels are finished in aluminum enamel.

OPTIONAL FEATURES AVAILABLE:
See appropriate caster series



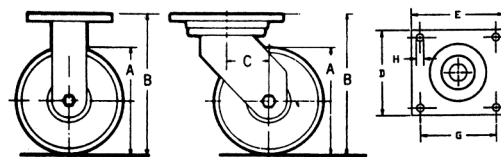
Swivel Caster Model 72-VG-062001-S shown in position on angle iron track

NYLACRON™ Wheels Available



95-VH-10709-R rigid caster with 10 x 4 V-Groove wheel 15,000 pound rating

Caster Height and Top Plate Mounting Dimensions



V-GROOVE CASTERS

V-GROOVE CASTER SPECIFICATIONS with CAST IRON WHEELS

Dia. (inch)	Width (inch)	Cap. (R Brg)	Cap. (T Brg)	OAH (inch)	Hub Length (inch)	Swivel Lead (inch)	Bolt Hole Centers (inch)	Top Plate (inch)	Wt. (lbs.)	Part Number Roller Brg	Part Number Tapered Brg
4	1-3/4	800	-	5-5/8	2-3/16	1-7/16	2-5/8 x 3-5/8	4 x 4-1/2	7-1/2	16VGR04201	-
4	1-3/4	800	-	5-5/8	2-3/16	1-5/16	3-3/8 x 5-1/4	4-1/2 x 6-1/4	9-1/4	62VGR04201	-
4	1-3/4	800	-	5-5/8	2-3/16	1-7/16	2-5/8 x 3-5/8	4-1/2 x 6-1/4	9	71VGR04201	-
4	1-3/4	800	-	5-5/8	2-3/16	1-7/16	2-7/16 x 4-15/16	4-1/2 x 6-1/4	10-1/2	72VGR04201	-
5	2	800	-	6-1/2	2-3/16	1-5/8	2-5/8 x 3-5/8	4 x 4-1/2	8-1/2	16VGR05201	-
5	2	800	-	6-1/2	2-3/16	1-1/2	3-3/8 x 5-1/4	4-1/2 x 6-1/4	10-1/4	62VGR05201	-
5	2	800	-	6-1/2	2-3/16	1-13/16	2-5/8 x 3-5/8	4-1/2 x 6-1/4	10	71VGR05201	-
5	2	800	-	6-1/2	2-3/16	1-13/16	2-7/16 x 4-15/16	4 x 6	11-1/2	72VGR05201	-
6	2	900	-	7-1/4	2-3/16	1-3/4	2-5/8 x 3-5/8	4 x 4-1/2	11-3/4	16VGR06201	-
6	2	1000	-	7-1/2	2-3/16	1-3/4	2-7/16 x 4-15/16	4-1/2 x 6-1/4	13-1/2	62VGR06201	-
6	2	1000	-	7-1/2	2-3/16	2-1/4	2-5/8 x 3-5/8	4 x 5	13-1/4	71VGR06201	-
6	2	1000	-	7-1/2	2-3/16	2-1/4	2-5/8 x 4-7/8	4 x 6	14-3/4	72VGR06201	-
6	2-1/2	2000	2000	7-5/8	3-1/4	1-1/2	3-3/8 x 5-1/4	4-1/2 x 6-1/4	21-3/4	81VGR06401	81VGR06409
6	2-1/2	2500	2500	8	3-1/4	2-1/4	3-3/8 x 5-1/4	5-1/4 x 7-1/4	26-1/4	90VGR-06401	90VGR06409
8	2-1/2	2000	2000	10-1/8	3-1/4	2-1/4	3-3/8 x 5-1/4	4-1/2 x 6-1/4	26-1/4	81VGR08401	81VGR08409
8	3	2500	2500	10-1/2	3-1/4	2-1/2	3-3/8 x 5-1/4	5-1/4 x 7-1/4	31-3/4	90VGR08401	90VGR08409
8	3	4000	4000	10-1/2	3-1/4	2-1/2	4-1/2 x 6	6-1/2 x 7-1/2	42-3/4	94VGR08501	90VGR08509
10	3	3000	3500	12-1/2	3-1/4	2-1/2	3-3/8 x 5-1/4	5 x 7-1/4	42-1/2	90VGR10501	90VGR10509
10	3	3000	3500	12-1/2	3-1/4	2-1/2	3-3/8 x 5-1/4	5 x 7-1/4	42-1/2	90VGR10501	90VGR10509
10	3	4000	4000	12-1/2	3-1/4	2-1/2	4-1/2 x 6	6 x 7-1/2	53-1/2	94VGR10501	90VGR10509
								6 x 7-1/2			

*Add "B" for Ball Bearing, "P" for Precision Bearing, "PL" for Plain Bearing, "R" for Roller Bearing or "T" for Tapered Bearing.

All Rig Options should be added to the end of the part number. (i.e. 72DW-PB-R*-0415-SL for Swivel Lock)

See Wheel Section for other premium wheels.

V-GROOVE CASTER SPECIFICATIONS with DROP FORGED WHEELS

Dia. (inch)	Width (inch)	Cap. (R Brg)	Cap. (T Brg)	OAH (inch)	Hub Length (inch)	Swivel Lead (inch)	Bolt Hole Centers (inch)	Top Plate (inch)	Wt. (lbs.)	Part Number Roller Brg	Part Number Tapered Brg
6	3	6000	6500	8-1/2	3-1/4	2-1/2	4-1/2 x 6	6-1/2 x 7-1/2 6 x 7-1/2	45	94VFR06501	94VFR06509
6	3	6000	10000	9	3-1/4	2-1/4	7 x 7	8-1/2 x 8-1/2	59-1/2	95VFR06501	95VHR06509
8	4	8350	10000	10-1/2	4-1/4	2-1/2	4-1/2 x 6	6-1/2 x 7-1/2 6 x 7-1/2	47	94VFR08701	94VFR08709
8	4	8350	15000	11	4-1/4	2-1/4	7 x 7	8-1/2 x 8-1/2	61-1/2	95VFR08701	95VHR08709
10	3	6000	6000	12-1/2	3-1/4	2-1/2	4-1/2 x 6	6-1/2 x 7-1/2	63	94VHR10501	94VHR10509
10	4	8350	10000	12-1/2	4-1/4	2-1/2	4-1/2 x 6	6-1/2 x 7-1/2	73-3/4	94VFR10701	94VFR10709
10	3	6000	6000	13	3-1/4	2-1/2	7 x 7	8-1/2 x 8-1/2	67-3/4	95VHR10501	95VHR10509
10	4	8350	15000	13	4-1/4	2-1/4	7 x 7	8-1/2 x 8-1/2	89-1/2	95VFR10701	95VHR10709

*Add "B" for Ball Bearing, "P" for Precision Bearing, "PL" for Plain Bearing, "R" for Roller Bearing or "T" for Tapered Bearing

All Rig Options should be added to the end of the part number. (i.e. 72DW-PB-R*-0415-SL for Swivel Lock)

See Wheel Section for other premium wheels

**ALL V-GROOVE CASTERS ARE NOW AVAILABLE IN KINGPINLESS CONSTRUCTION
WITH NYLACRON™ PRECISION BEARING WHEELS**

KINGPINLESS PNEUMATIC CASTERS

KINGPINLESS PNEUMATIC CASTER FEATURES

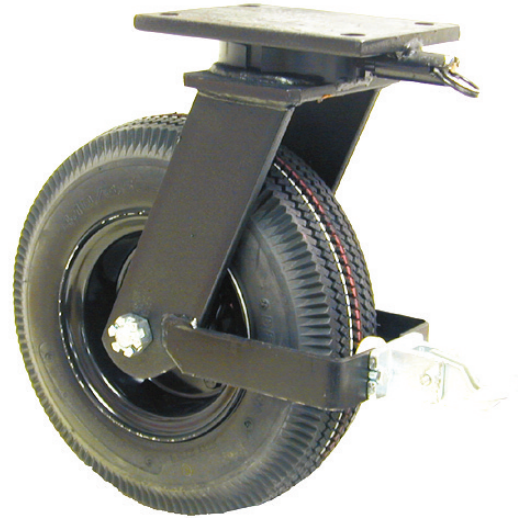
4K: Cold forged top plate, yoke and button are all heat treated to prevent brinelling, improve swivel action and increase service life. Load and thrust bearings are hardened and ground and rotate on hardened raceways. All swivel sections are equipped with a lubrication fitting for field maintenance. Notched yokes are standard.

5K Series/Raceway Design: Patented Kingpinless™ single ball bearing precision machined raceway, to 53 Rockwell C minimum, lube fittings for swivel bearings and for wheel bearings. Swivel section features a 2-3/8" diameter raceway with 3/8" ball bearings. Notched yokes are standard.

7K Series/Raceway Design: Patented Kingpinless™ single ball bearing precision machined raceway, to 53 Rockwell C minimum. Swivel section features a 3" diameter raceway with 1/2" ball bearings. Lube fittings for swivel bearings and wheel bearings. Notched yokes are standard.

8K Series/Raceway Design: 4-1/2" diameter raceway with 3/4" diameter carbon steel balls. Precision machined and hardened to 53 Rockwell C minimum. Load and thrust are accommodated by our Patented Kingpinless™ design. Sealed raceway is standard. Swivel Top Plate - SAE 1045 hot steel forging. Swivel Yoke Base - SAE 1045 hot steel forging.

9K Series/Raceway Design: Patented Kingpinless™ single ball bearing precision machined raceway, to 53 Rockwell C minimum. 7" diameter raceway with 3/4" diameter ball bearings.



Note: Maintain proper air pressure for best results. Capacity rating is for manual operation. For capacities of power moved loads, larger diameter or higher capacity wheels, please consult Acorn™.

Options

CWB: Cam Wheel Brake
(8" & 10" only)

DSL: Demountable swivel lock
(requires Notched yoke)

FCWB: Face Contact Wheel Brake
for larger sizes

FF: Foam Filled Tire

HDSL: Heavy-Duty Threaded
Swivel Lock

NY : Notched Yoke

SL: Swivel Lock

SR: Sealed Swivel Raceway

STANDARD TOP PLATES

Series/ Top Plate	Mounting Plate (inch)	Bolt Hole Spacing (inch)	Bolt Size (in)
4K & 5K	4 x 4-1/2	2-5/8 x 3-5/8 slotted to 3 x 3	3/8
7K	5-1/4 x 7-1/4	3-3/8 x 5-1/4 slotted to 4-1/8 x 6-1/8	1/2
8K	6-1/4 x 4-1/2 (swl)	4-1/2 x 6 slotted to 4-1/8 x 6-1/8	1/2
9K	8-1/2 x 8-1/2	7 x 7	5/8

KINGPINLESS PNEUMATIC CASTERS

PNEUMATIC CASTER SPECIFICATIONS

Dia. (inch)	Width (inch)	Cap. (lbs.)	OAH (inch)	Swivel Caster with Straight Roller Bearing	Swivel Caster with Ball Bearing	Swivel Caster with Tapered Bearing	Swl. Lead (inch)	Wt. (lbs.)
8	2.80/4	300	11	4KS8RSF	4KS8BSF	–	2-5/8	9.5
8	2.80/4	300	11	5KS8RSF	5KS8BSF	–	2-5/8	13
8	2.80/4	600	11	5KDWS8RSF	5KDWS8BSF	–	2-5/8	20
10	4.10/4	480	13	4KS10RSF	4KS10RBF	–	3-1/4	11
10	4.10/4	480	13	5KS10RSF	5KS10BSFS	5KS10TSFS	3-1/4	14
10	4.10/4	960	13	5KDWS10RSF	5KDWS10BSFS	5KDWS10TSFSS	3-1/4	22
12	4.10/6	500	15-1/2	4KS12RSF	4KS12RBF	–	3-1/2	14.5
12	4.10/6	500	15-1/2	5KS12RSF	5KS12BRSF	5KS12TRSF	3-1/2	15
12	4.10/6	1000	15-1/2	5KDWS12RSF	5KDWS12BRSF	5KDWS12TRSF	3-1/2	35
14	5.30/6	870	17-3/4	7KS14RSF	7KS14BS	7KS14TSF	4-1/2	28
14	5.30/6	1740	17-3/4	7KDWS14RSF	7KDWS14BS	7KDWS14TSF	4-1/2	41
16	4.80/8	1000	19-1/8	7KS16RSF	–	7KS16TSF	4-1/2	35
16	4.80/8	1230	19-1/8	–	–	8KS16TSF	4	45
16	4.80/8	2000	19-1/8	7KDWS16RSF	–	7KDWS16TS	4-1/2	53
16	4.80/8	2460	19-1/8	–	–	8KDWS16TS*	4	45
18	5.70/8	1170	21-1/4	7KS18RSF	–	7KS18TSF	4-1/2	35
18	5.70/8	2340	21-1/4	7KDWS18RSF	–	7KDWS18TSF	4	45
18	5.70/8	1560	21-1/2	8KS18RSF	–	8KS18TSF	4-1/2	53
18	5.70/8	3120	21-1/2	8KDWS18RSF	–	8KDWS18TS	4	45
21	6.90/9	2420	24-1/4	–	–	10KS21T	5	84.5
21	6.90/9	4840	24-1/4	–	–	10KDWS21T	5	130
23	6.50/10	2775	26-1/4	–	–	10KS23T	5	87
23	6.50/10	5550	26-1/4	–	–	10KDWS23T	5	135
25	7.50/10	3630	28-3/4	–	–	10KS25T	5	90.5
25	7.50/10	7260	28-3/4	–	–	10KDWS25T	5	140

For rigid casters, change “S” to “R” (i.e. 4KS8RSF becomes **4KR8RSF**)

All Rig Options should be added to the end of the part number. (i.e. 4KS8RSFSL for Swivel Lock)

ALL PNEUMATIC WHEELS ARE AVAILABLE WITH SEALED PRECISION BEARINGS

*Add 1/8” to caster overall height when using this top plate.

**Deduct 1/16” to caster overall height when using this top plate.

***6 ply

****10 ply

4 ply is standard

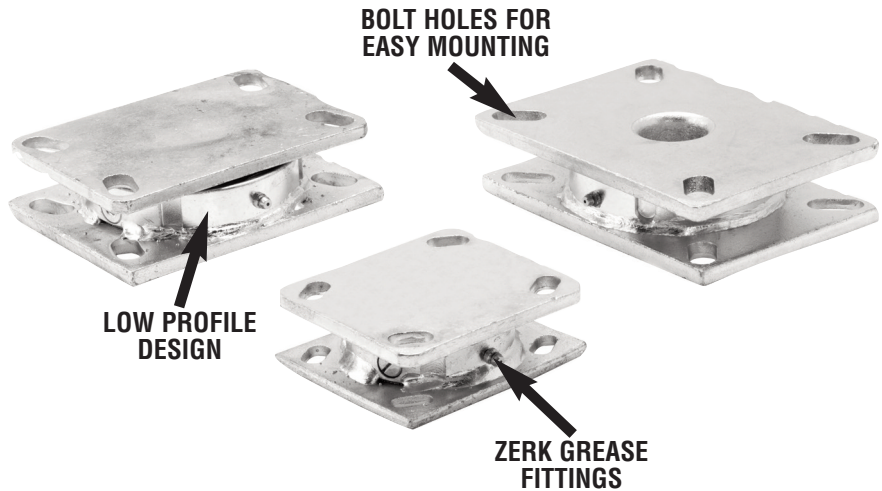
OPTIONAL TOP PLATES

Series/ Top Plate	Mounting Plate (inch)	Bolt Hole Spacing (inch)	Bolt Size (inch)
4K & 5K Top Plates			
4KJ	4 x 5	2-5/8 x 3-5/8 slotted to 3 x 4	3/8
4KK	4-1/2 x 6-1/2	2-7/16 x 4-15/16 slotted to 3-3/8 x 5-1/4	1/2
4KD	5 x 5-1/2	4-1/8 x 4-1/2	3/8
7K Top Plates			
7KB	6 x 7	4-5/8 x 5-1/2 slotted to 4-3/8 x 5-5/8	1/2
7KC	6 x 7-1/2	4-1/2 x 6 slotted to 4-1/8 x 6-1/8	1/2
7KE	4-1/2 x 6-1/2	2-7/16 x 4-15/16 slotted to 3-3/8 x 5-1/4	1/2
9K Top Plates			
9KA	8-1/2 x 11	7 x 9-3/4	5/8

Maintain proper air pressure for best results. Capacity rating is for manual operation. For capacities of power moved loads, larger diameter or higher capacity wheels, please consult Acorn™.

TURNTABLES

- Capacity up to 10 tons.
- A proven workhorse in the most abusive applications.
- Maximize workspace...enables workers to remain in one position and rotate items they're working with from all sides.
- Zinc plated finish.
- Kingpinless design for added strength and durability.



“Forged Steel” Construction • Plates are AISI 1045 steel one-piece forging precision machined and through-hardened. Bearing mounted on precision machined raceway.

Part Number	Description	Top Plate Size (inch)	Overall Height (inch)	Capacity (lbs.)
TT100000	1/4" thick mounting plates, 3/8" ball bearings	4" x 4-1/2"	1.73"	1700
TT300000	5/16" mounting plates, 1/2" ball bearings	4-1/2" x 6-1/4"	1.73"	5500
TT400000	3/8" thick mounting plates, 1/2" ball bearings	5-1/4" x 7-1/4"	1.73"	5500
TT600000	1/2" thick mounting plates, 3/4" ball bearings 4-1/2" raceway	6-1/4" x 7-1/4"	2.75"	10000
TT700000	1/2" thick mounting plates, 3/4" ball bearings 7" raceway	8-1/2" x 8-1/2"	3.125"	20000

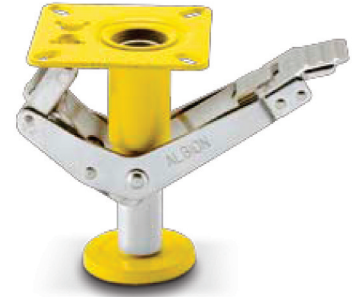
“Stamped Steel” Construction • Plates are AISI 1045 heat treated steel welded inside and out. Bearing mounted on heat treated machined raceway.

Part Number	Description	Top Plate Size (inch)	Overall Height (inch)	Capacity (lbs.)
TT110000	1/4" thick mounting plates, 3/8" ball bearings	4" x 4-1/2"	1.53"	1400
TT310000	5/16" mounting plates, 1/2" ball bearings	4-1/2" x 6-1/4"	1.75"	4100
TT410000	3/8" thick mounting plates, 1/2" ball bearings	5-1/4" x 7-1/4"	1.75"	5400
TT610000	1/2" thick mounting plates, 3/4" ball bearings 4-1/2" raceway	6-1/4" x 7-1/4"	2.78"	9500

FLOOR LOCKS

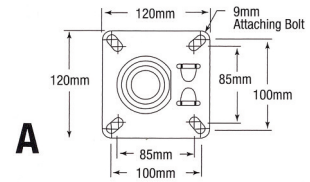
16 LE Series

- Top plate fitting medium duty truck lock.
- Extra heavy duty construction.
- Safely secures the truck in position while loading or unloading.
- Instantly released by slight downward pressure.
- Large diameter, non-skid rubber pad ensures firm grip to uneven ground surfaces.
- Operating force does not vary with load.
- Finish: Zinc plated or ROHS compliant.



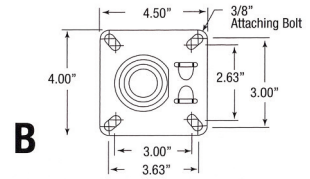
STANDARD 16 SERIES TOP PLATE (DRAWING A)

Wheel Diameter (inch)	Caster Height (inch)	Retracted Clearance (inch)	Approx. Weight (lbs.)	Part Number
5	6-1/2	1-1/2	3-3/4	16LE0580
6	7-1/4	1-1/2	3-3/4	16LE0680
8	9-1/2	1-1/2	3-3/4	16LE0780
6	7-1/2	1-1/2	3-3/4	110LE0680
8	10-1/8	1-1/2	3-3/4	110LE0880



INTERNATIONAL ISO TOP PLATE (DRAWING B)

Wheel Diameter (inch)	Caster Height (inch)	Retracted Clearance (inch)	Approx. Weight (lbs.)	Part Number
6	210mm	1-1/2	3-3/4	16LE0690
8	259mm	1-1/2	3-3/4	16LE0890

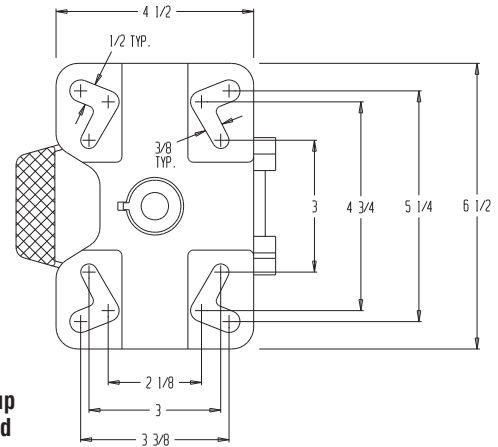


FL-ADJ Series

This one of a kind floor lock includes an adjustable height foot pad that will work on carts with different caster heights. The adjustable height feature provides uniform locking and safety unlocking force for better ergonomic operation. This feature also keeps the floor lock working properly as spring and pads wear over time. Height is adjustable by turning the bottom pad. This unit has a bright zinc plated finish with heavy-duty cast steel construction. The bottom pad includes suction cups for extra grip.



Suction cup bottom pad



Part Number	Extended Height (inch)	Retracted Height (inch)	Used with Caster Size (inch)	Approx. Wt. (lbs.)
Zinc plated finish with heavy-duty steel construction				
FLADJ46	5-3/4" to 8"	4-3/4" to 7"	4" - 6"	9
FLADJ810	7-5/8" to 10-7/8"	6-1/4" to 9-1/2"	8" - 10"	11

Stainless Steel Construction

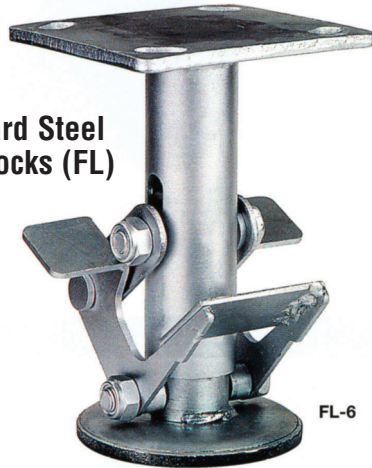
FLADJ46SS	5-3/4" to 8"	4-3/4" to 7"	4" - 6"	9
FLADJ810SS	7-5/8" to 10-7/8"	6-1/4" to 9-1/2"	8" - 10"	11

FLOOR LOCKS

Standard Steel Floor Locks

Model Number	Height Unlocked	Height Locked	Bolt Hole Centers	Bolt Hole Spacing	Top Plate Size	Bolt Hole Size	Weight (Approx)
FL4	4-1/2"	5-5/8"	3" x 3"	2-5/8" x 3-5/8"	4" x 4-1/2"	3/8"	3.5
FL5	5-3/8"	6-1/2"	3" x 3"	2-5/8" x 3-5/8"	4" x 4-1/2"	3/8"	4
FL6	6-1/2"	7-1/2"	3" x 3"	2-5/8" x 3-5/8"	4" x 4-1/2"	3/8"	4
FL8	8-1/2"	9-1/2"	3" x 3"	2-5/8" x 3-5/8"	4" x 4-1/2"	3/8"	4

Standard Steel Floor Locks (FL)



FL-6

Stainless Steel Floor Locks (SSFL)

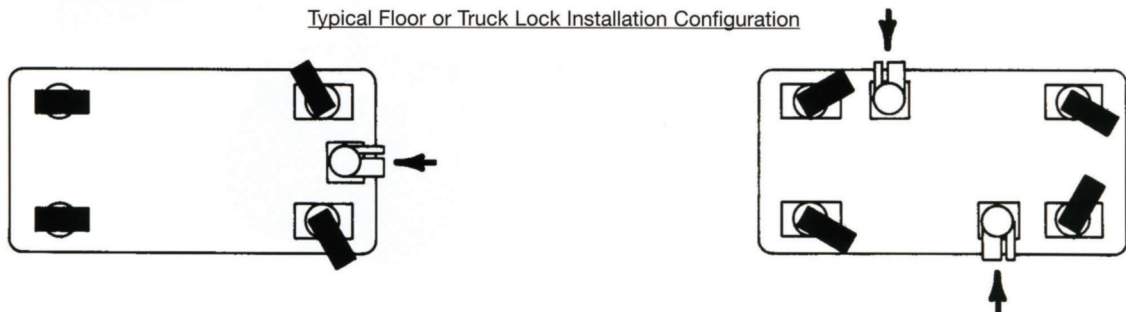


SSFL-4

Stainless Steel Floor Locks

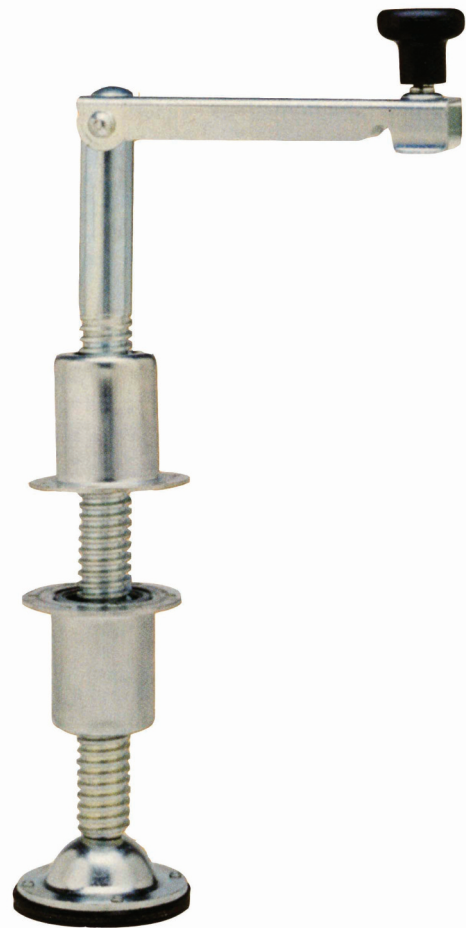
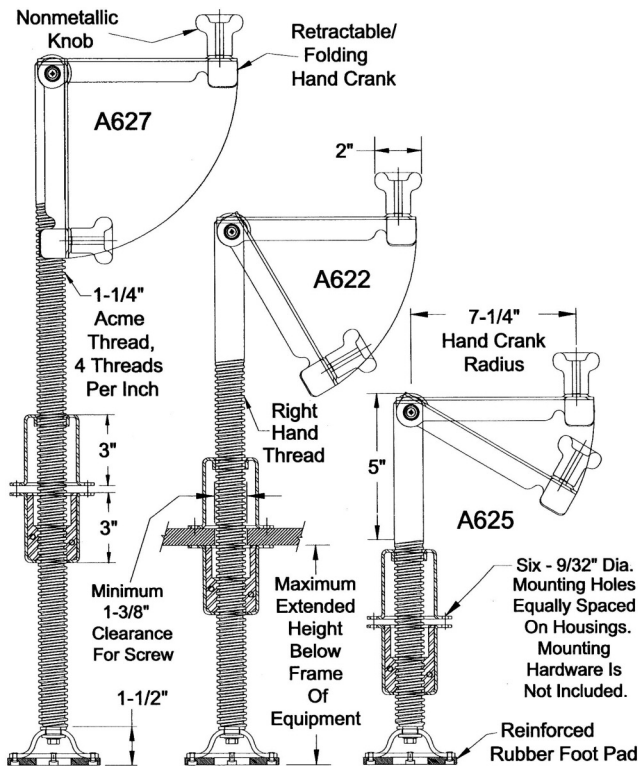
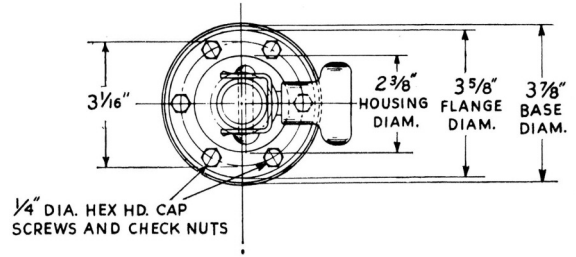
Model Number	Height Unlocked	Height Locked	Bolt Hole Centers	Bolt Hole Spacing	Top Plate Size	Bolt Hole Size	Weight (Approx)
SSFL4	4-1/2"	5-5/8"	3" x 3"	2-5/8" x 3-5/8"	4" x 4-1/2"	3/8"	3.5
SSFL5	5-3/8"	6-1/2"	3" x 3"	2-5/8" x 3-5/8"	4" x 4-1/2"	3/8"	4
SSFL6	6-1/2"	7-1/2"	3" x 3"	2-5/8" x 3-5/8"	4" x 4-1/2"	3/8"	4
SSFL8	8-1/2"	9-1/2"	3" x 3"	2-5/8" x 3-5/8"	4" x 4-1/2"	3/8"	4

Typical Floor or Truck Lock Installation Configuration



LEVELING JACKS

Economical and practical method for leveling and stabilizing portable equipment such as work stations. Used to brake equipment in place and elevate it to the required height. An economical and practical method for leveling and stabilizing portable equipment such as work platforms. They are used to brake equipment in place and elevate it to a required height. These screw jacks can be used in areas where position locks cannot be applied. The hand crank has a radius of 7-1/4". All exposed metal parts are zinc plated for proven rust prevention.



A- Series Leveling Jack Heavy Duty Premium

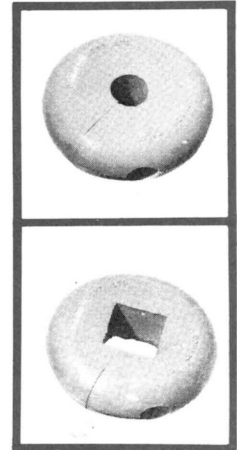
Length of of Screw Travel (inch)	Overall Height (inch)	Maximum Extended Height Below Frame of Equipment (inch)	Minimum Height Below Frame of Equipment (inch)	Floor Jack Catalog Number	Approx. Weight (lbs.)
9	18	13-1/2"	4-1/2"	A625	9
17	26	21-1/2"	4-1/2"	A622	12
21	30	25-1/2"	4-1/2"	A627	13

BUMPERS

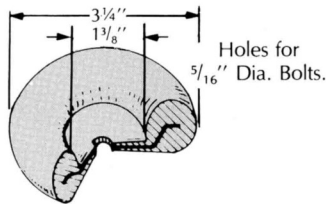
ROUND TUBING BUMPER

SQUARE TUBING BUMPER

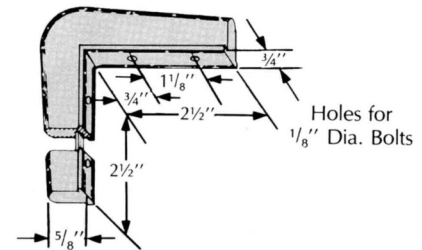
3" OUTSIDE DIAMETER	Number	3" OUTSIDE DIAMETER	Number
5/8" Diam. I.D.	A-8400	7/8" Square I.D.	A-8409
3/4" Diam. I.D.	A-8401	1" Square I.D.	A-8410
7/8" Diam. I.D.	A-8402		
1" Diam. I.D.	A-8403		
1-1/4" Diam. I.D.	A-8404		
Weight 3 oz. each.		Weight 4 oz. each.	
5" OUTSIDE DIAMETER	Number	5" OUTSIDE DIAMETER	Number
3/4" Diam. I.D.	A-6355	7/8" Square I.D.	A-8847
1" Diam. I.D.	A-2270	1" Square I.D.	A-7668
1-1/4" Diam. I.D.	A-2274	1-1/4" Square I.D.	A-4953
1-1/2" Diam. I.D.	A-2275	1-1/2" Square I.D.	A-2272
1.9" Diam. I.D.	A-2276	1-5/8" Square I.D.	A-5375
		1-3/4" Square I.D.	A-6147
		2" Square I.D.	A-2273
		1-5/8" x 1-13/16 Rectangle	A-2271
Weight 12 oz. each.		Weight 12 oz. each.	



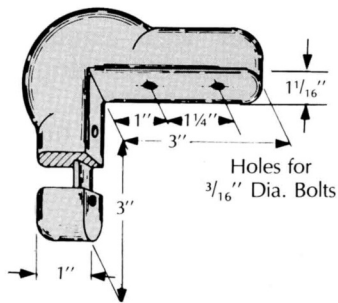
DOUGHNUT AND CORNER BUMPERS



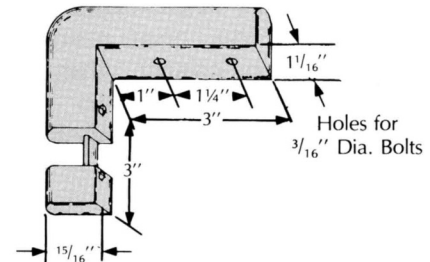
A-813 DOUGHNUT BUMPERS. Commonly installed on the ends of tubular handles to give needed protection in manipulation of equipment. Note steel insert. Attached to wood with wood screws or to metal with rivets, bolts or metal screws. Weight 6 oz. each.



A-2680 CORNER BUMPER. Made especially for use with A-1541 Strip Bumper, giving a uniform continuous effect all around the equipment. Weight 5 oz. each.

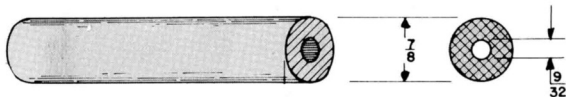


A-833 CORNER BUMPERS. Made to give adequate protection to all surfaces that may be contacted, such as doors, doorfacings, walls, furniture and other equipment. Easily attached by using self-tapping sheet metal screws. Weight 6 oz. each.

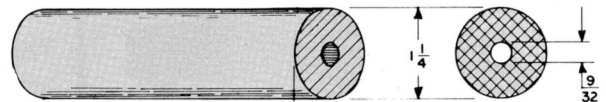


A-1676 CORNER BUMPERS. Made especially for use with A-567 Strip Bumper, giving a uniform continuous effect all around the equipment. Weight 5 oz. each.

TIRING



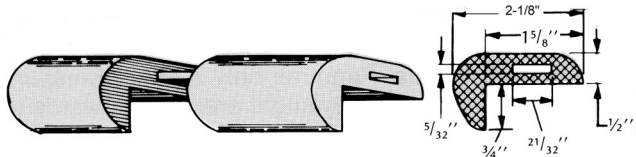
GREY 7/8" TIRING is compounded for use on wheelchairs and other similar wheels. Has very good wearing qualities and will withstand rough use. Tiring can be supplied in lengths up to 250 ft. Weight 5 oz./ft. Black also available.



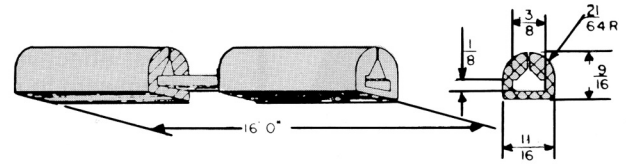
GREY 1-1/4" TIRING is compounded for use on wheelchairs and other similar wheels. Has very good wearing qualities and will withstand rough use. Tiring can be supplied in lengths up to 250 ft. Weight 8 oz./ft. Black also available.

BUMPERS - (WITH OR WITHOUT INSERTS) - CAN BE PROVIDED IN SPECIAL LENGTHS

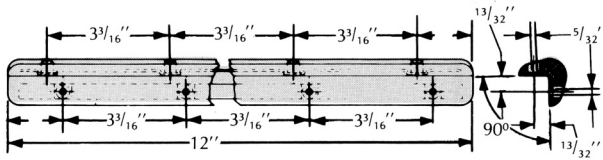
BUMPERS



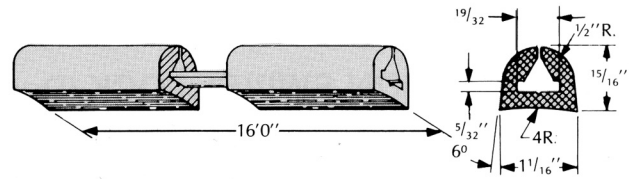
MODEL A-2041 provides excellent protection for desk and table edges, etc. Maximum lengths 16 ft. for easy installation. Metal insert optional. Wt. 14 oz./ft.



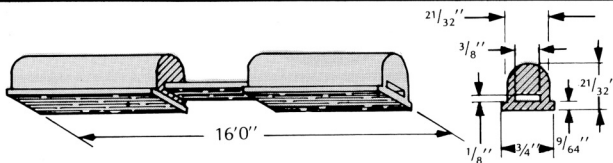
MODEL A-4652 is a flat-based rubber strip bumper with split top for easier installation. Wt. 4 oz./ft. Metal insert optional.



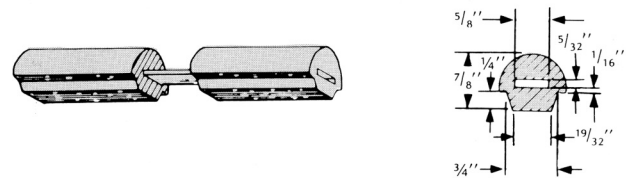
MODEL A-4925 is a molded strip corner bumper 12" long, for application to any right angle shape. Easily installed with self tapping metal screws. Wt. 8 oz. ea.



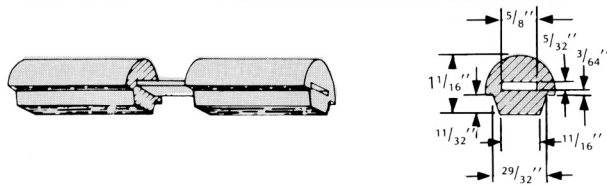
MODEL A-2084 is a flat based rubber strip bumper designed for same use as A-567. With split top for easier installation. Wt. 9 oz./ft. Metal insert optional.



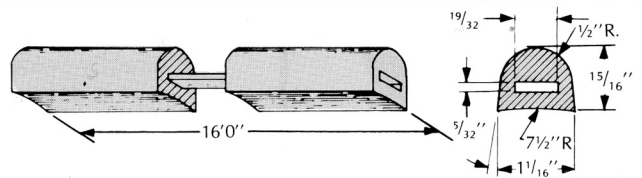
MODEL A-1541 is a very popular small-sized strip bumper that is adaptable to many applications. This model is easily applied to equipment. Wt. 4 oz./ft. Metal insert optional.



MODEL A-1023 is used with 1" Commercial channel iron, but is designed for lighter service, eliminating unnecessary weight. Will pay for itself many times over. Wt. 12 oz./ft. Metal insert optional.



MODEL A-1019 made especially for 1-1/4" Commercial channel iron is used for heavier type equipment where strength is necessary for operation. Gives that extra needed protection. Wt. 12 oz./ft. Metal insert optional.



MODEL A-567 is a flat-based rubber strip designed for installation on either metal or wood surfaces. This model is easily applied and does not require a special channel. Wt. 9 oz./ft. Metal insert optional.

MOLD-ON REVOLVING BUMPERS HEAVY DUTY RUBBER BUMPERS

3" DIA.	4" DIA.	5" DIA.
3/8" Wide Face Weight 6 oz. ea.	3/8" Wide Face Weight 8 oz. ea.	1/2" Wide Face Weight 11 oz. ea.
A-4468	A-6478	A-7569

DIA. INCHES	WEIGHT	MODEL NUMBER
4"	5 oz.	A-4940
5"	12 oz.	A-4941
7"	26 oz.	A-4597
7-1/2"	28 oz.	A-4820
8-1/2"	42 oz.	B-6487



REVOLVING BUMPERS are designed to fit on a caster stem and prevent the bed or other article of furniture on which they are used, from striking the wall. The bumper will strike the wall first and, if the bed is moved along the wall, the bumper will revolve, thus eliminating any chance of smearing the wall or causing an erasure. Made from grey non-marking rubber. When ordering Revolving Bumpers, specify either 7/16" or 5/8"

Designed to fit almost every type of portable equipment requiring heavy duty bumpers. These solid rubber bumpers with a heavy steel insert are made of grey (non-marking) rubber molded around the steel insert, making the entire unit virtually indestructable and long lasting. The machines steel hubs are made in the following standard stem sizes: 7/16", 1/2", 9/16", 5/8", 3/4", 13/16", 7/8" and 1". Other sizes available on request.



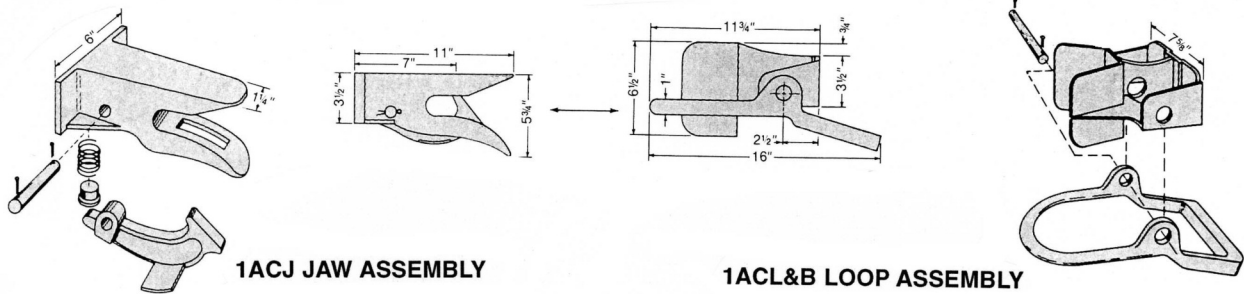
BUMPERS - (WITH OR WITHOUT INSERTS) - CAN BE PROVIDED IN SPECIAL LENGTHS

COUPLERS

Automatic couplers are almost universally seen on caster-steer trailers – interchangeable with most makes.

Made in two capacities: the heavy duty model for trailers of 1-1/4 ton to 10 ton capacity; has cast steel bail and jaw sections; the light duty model for up to 2,500 lb. trailers has a fabricated bail section and smaller jaw assembly. (Both are interchangeable with comparable competitive brands, but a light duty jaw will not accept a heavy duty bail.)

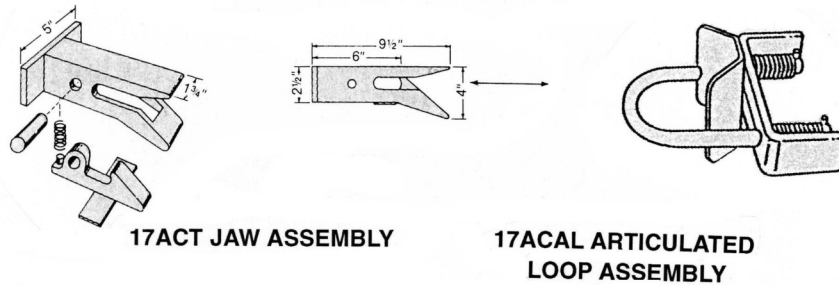
10 TON AUTOMATIC



1ACJ JAW ASSEMBLY

1ACL&B LOOP ASSEMBLY

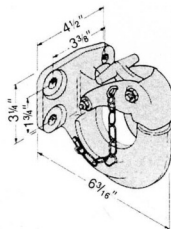
1-1/4 TON AUTOMATIC



17ACT JAW ASSEMBLY

17ACAL ARTICULATED LOOP ASSEMBLY

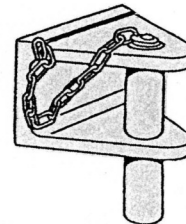
10 TON MANUAL



PH10 PINTLE HOOK

Also known as a "military hitch" because of its use by the armed forces. Very popular on ground support vehicles.

Meets Military Spec MS51335.
10 Ton Capacity - Weight 11 lbs.



PC10 PIN & CLEVIS

Standard Model has q" dia pin. Perfect for towing rings up to 3". Other sizes available on request.

10 Ton Capacity - Weight 5 lbs.