

9 700 KINGPINLESS CASTERS



20,000 LBS. LOAD CAPACITY KINGPINLESS TYPE CASTERS

- **Top Plate:** 1/2" thick AISI 1045 steel one-piece forging precision machined for longer life.
- **Swivel Section:** 3/4" ball bearings mounted in a 7" diameter precision machined raceway. Zerk in swivel section.
- **Legs:** 1/2" thick steel welded to yoke base using 100,000 psi weld filler.
- **Axle:** 1-1/4" diameter.
- Alternate or custom caster configurations available.

BRAKE OPTIONS



Poly Cam
specify P



Face Contact
specify F



Hand Operated Swivel Lock
specify SL7000000



TOE GUARDS AVAILABLE TO

These super duty casters are built specifically for that severe application where reliability is essential.

TOP PLATE: (STANDARD)

Plate Size: 8-1/2" x 8-1/2"

Bolt Size: 5/8"

TYPICAL APPLICATIONS

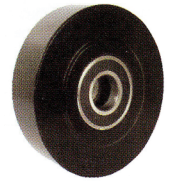
- Aircraft engine stands
- Ground support equipment
- Aerospace A-frame skin dollies
- Portable jigs
- Tooling fixtures
- Die carts
- Large platform work

9 700 KINGPINLESS CASTERS

NYLACRON™ WHEELS PRECISION BALL BEARINGS NY/MD

- Precision Machined from Cast Polyamide. Hardness 112-120 Rockwell R.
- Ultimate choice for Extremely High Load applications to replace metallic wheels.
- Offer very high abrasion resistance and very low rolling resistance under extreme loads.

- Resistant to salt, grease, alcohol and mild acids - can be used in corrosive applications with appropriate bearings.
- Large Precision Ball Bearings.
- Temperature Range: -40°F to +270°F.



| Part Number Swivel Caster | Part Number Rigid Caster | Wheel Diameter (inch) | Tread Width (inch) | Load Capacity (lbs) | Overall Height (inch) | Swivel Lead (inch) |
|---------------------------|--------------------------|-----------------------|--------------------|---------------------|-----------------------|--------------------|
| 700NYMD08728 | 700NYMD08728R | 8 | 4 | 10,000 | 10-1/2 | 2-15/16 |
| 700NYMD10728 | 700NYMD10728R | 10 | 4 | 12,000 | 12-1/2 | 3-3/8 |
| 700NYMD10828 | 700NYMD10828R | 10 | 5 | 12,000 | 13 | 2-1/2 |
| 700NYMD12728 | 700NYMD12728R | 12 | 4 | 14,000 | 15-1/2 | 3-1/4 |
| 700NYMD12828 | 700NYMD12828R | 12 | 5 | 18,000 | 15-1/2 | 3-1/4 |

POLYURETHANE ON CAST IRON ROLLER BEARING PY

- Tapered or Straight Roller Bearing available add T or R to suffix.

- See wheel section for additional durometers.



| Part Number Swivel Caster | Part Number Rigid Caster | Wheel Diameter (inch) | Tread Width (inch) | Load Capacity (lbs) | Overall Height (inch) | Swivel Lead (inch) |
|---------------------------|--------------------------|-----------------------|--------------------|---------------------|-----------------------|--------------------|
| 700PY08709 | 700PY08709R | 8 | 4 | 3500 | 11 | 2-1/4 |
| 700PY10709 | 700PY10709R | 10 | 4 | 4200 | 13 | 2-1/2 |
| 700PY10809 | 700PY10809R | 10 | 5 | 5000 | 13 | 2-1/2 |
| 700PY12709 | 700PY12709R | 12 | 4 | 4800 | 15-1/2 | 3-1/4 |
| 700PY12809 | 700PY12809R | 12 | 5 | 6000 | 15-1/2 | 3-1/4 |
| 700PY16709 | 700PY16709R | 16 | 4 | 5970 | 19 | 4-1/2 |
| 700PY16809 | 700PY16809R | 16 | 5 | 7700 | 19 | 4-1/2 |

THICK TREAD POLYURETHANE ROLLER BEARING PX

- Tapered or Straight Roller Bearing available add T or R to suffix.

- See wheel section for additional durometers.



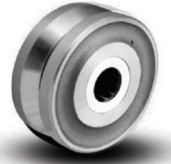
| Part Number Swivel Caster | Part Number Rigid Caster | Wheel Diameter (inch) | Tread Width (inch) | Load Capacity (lbs) | Overall Height (inch) | Swivel Lead (inch) |
|---------------------------|--------------------------|-----------------------|--------------------|---------------------|-----------------------|--------------------|
| 700PX08709 | 700PX08709R | 8 | 4 | 3850 | 11 | 2-1/4 |
| 700PX10709 | 700PX10709R | 10 | 4 | 4620 | 13 | 2-1/2 |
| 700PX10809 | 700PX10809R | 10 | 5 | 5500 | 13 | 2-1/2 |
| 700PX12709 | 700PX12709R | 12 | 4 | 5820 | 15-1/2 | 3-1/4 |
| 700PX12809 | 700PX12809R | 12 | 5 | 6600 | 15-1/2 | 3-1/4 |
| 700PX16709 | 700PX16709R | 16 | 4 | 6570 | 19 | 4-1/2 |
| 700PX16809 | 700PX16809R | 16 | 5 | 8470 | 19 | 4-1/2 |

9 700 KINGPINLESS CASTERS

V-GROOVED DROP FORGED ROLLER BEARING TAPERED ROLLER BEARING

VF

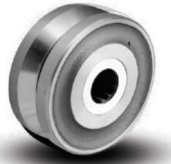
| Part Number Swivel Caster | Part Number Rigid Caster | Wheel Diameter (inch) | Tread Width (inch) | Load Capacity (lbs) | Overall Height (inch) | Swivel Lead (inch) |
|---------------------------------|--------------------------------|-----------------------------|--------------------------|---------------------------|-----------------------------|--------------------------|
| 700VF08709 | 700VF08709R | 8 | 4 | 10,000 | 11 | 2-1/4 |
| 700VF10709 | 700VF10709R | 10 | 4 | 8350 | 13 | 2-1/2 |



V-GROOVED HEAVY DUTY DROP FORGED STEEL ROLLER BEARING

VH

| Part Number Swivel Caster | Part Number Rigid Caster | Wheel Diameter (inch) | Tread Width (inch) | Load Capacity (lbs) | Overall Height (inch) | Swivel Lead (inch) |
|---------------------------------|--------------------------------|-----------------------------|--------------------------|---------------------------|-----------------------------|--------------------------|
| 700VH08709 | 700VH08709R | 8 | 4 | 15,000 | 11 | 2-1/4 |
| 700VH10709 | 700VH10709R | 10 | 4 | 15,000 | 13 | 2-1/2 |



DROP FORGED STEEL ROLLER BEARING

FS

• Tapered (09)

| Part Number Swivel Caster | Part Number Rigid Caster | Wheel Diameter (inch) | Tread Width (inch) | Load Capacity (lbs) | Overall Height (inch) | Swivel Lead (inch) |
|---------------------------------|--------------------------------|-----------------------------|--------------------------|---------------------------|-----------------------------|--------------------------|
| 700FS08709 | 700FS08709R | 8 | 4 | 10,000 | 11 | 2-1/4 |
| 700FS10709 | 700FS10709R | 10 | 4 | 10,000 | 13 | 2-1/2 |



HEAVY DUTY LARGE BORE DROP FORGED STEEL ROLLER BEARING

FH

• Tapered (09)

| Part Number Swivel Caster | Part Number Rigid Caster | Wheel Diameter (inch) | Tread Width (inch) | Load Capacity (lbs) | Overall Height (inch) | Swivel Lead (inch) |
|---------------------------------|--------------------------------|-----------------------------|--------------------------|---------------------------|-----------------------------|--------------------------|
| 700FH08709 | 700FH08709R | 8 | 4 | 20,000 | 11 | 2-1/4 |
| 700FH10709 | 700FH10709R | 10 | 4 | 20,000 | 13 | 2-1/2 |



SEE WHEEL SECTION FOR OTHER WHEELS AVAILABLE